



JN0-361^{Q&As}

Service Provider Routing and Switching, Specialist Exam

Pass Juniper JN0-361 Exam with 100% Guarantee

Free Download Real Questions & Answers **PDF** and **VCE** file from:

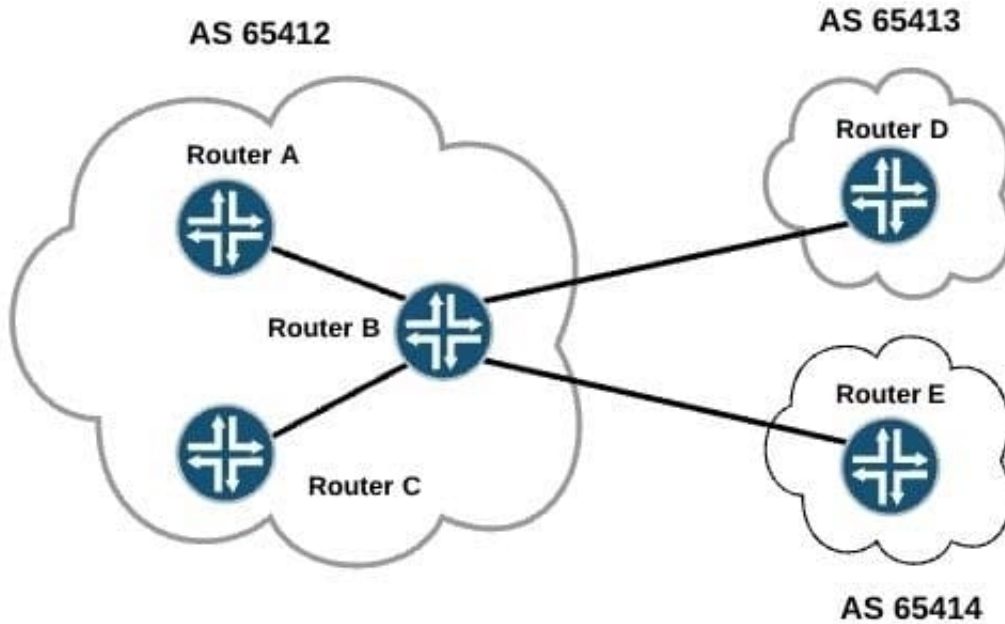
<https://www.passapply.com/jn0-361.html>

100% Passing Guarantee
100% Money Back Assurance

Following Questions and Answers are all new published by Juniper
Official Exam Center

- ⚙ **Instant Download** After Purchase
- ⚙ **100% Money Back** Guarantee
- ⚙ **365 Days** Free Update
- ⚙ **800,000+** Satisfied Customers



**QUESTION 1**

In the exhibit, all devices are sending routes to Router B. Which routes will be advertised from Router B to Router C?

- A. BGP routes learned from Router A only
- B. BGP routes learned from Router E only
- C. BGP routes learned from Routers D and E only
- D. BGP routes learned from Routers A, D, and E

Correct Answer: C

Router B will advertise BGP routes learned from Routers D and E to Routers A and C (EBGP to IBGP). A BGP router never readvertises IBGP learned routes to other IBGP peers.

QUESTION 2

Click the Exhibit button.



```
[edit]
user@host# show routing-options
static {
    route 172.29.0.0/24 {
        next-hop 172.15.27.1;
        no-readvertise;
    }
    route 172.28.0.0/24 next-hop 172.15.27.1;
    route 172.29.0.0/16 next-hop 172.15.27.1;
    route 172.29.0.0/27 next-hop 172.15.27.1;
    route 172.29.0.0/8 next-hop 172.15.27.1;
}

[edit]
user@host# show policy-options
policy-statement export-static-to-ospf {
    term match-key-static-routes {
        from {
            protocol static;
            route-filter 172.29.0.0/16 longer;
        }
        then accept;
    }
}
```

Referring to the exhibit, which static route will be exported into OSPF?

- A. 172.29.0.0/16
- B. 172.29.0.0/17
- C. 172.28.0.0/24
- D. 172.29.0.0/24

Correct Answer: D

QUESTION 3

In which two environments would BGP add value? (Choose two)

- A. an enterprise environment with a single upstream connection
- B. an enterprise environment with multiple upstream connections
- C. a service provider environment
- D. a home office environment

Correct Answer: BC



QUESTION 4

Which statement correctly describes unified in-service software upgrades (ISSU)?

- A. Unified ISSU is built upon graceful-restart extensions to allow upgrades with no impact to the data plane.
- B. Unified ISSU is supported on systems with single or dual Routing Engines.
- C. Unified ISSU permits both upgrades and downgrades with no control plane disruption and is based on the graceful Routing Engine switchover (GRES) feature.
- D. Unified ISSU is based on nonstop-routing (NSR) and graceful Routing Engine switchover (GRES), and permits software upgrades only.

Correct Answer: D

QUESTION 5

In an RSTP network, which combination of port types can exist on the root bridge?

- A. There can be some combination of designated ports and backup ports
- B. There can be some combination of root ports and alternate ports
- C. All ports will be designated ports
- D. All ports will be root ports

Correct Answer: C

[Latest JN0-361 Dumps](#)

[JN0-361 PDF Dumps](#)

[JN0-361 Practice Test](#)