



JN0-348^{Q&As}

Enterprise Routing and Switching, Specialist

Pass Juniper JN0-348 Exam with 100% Guarantee

Free Download Real Questions & Answers **PDF** and **VCE** file from:

<https://www.passapply.com/jn0-348.html>

100% Passing Guarantee
100% Money Back Assurance

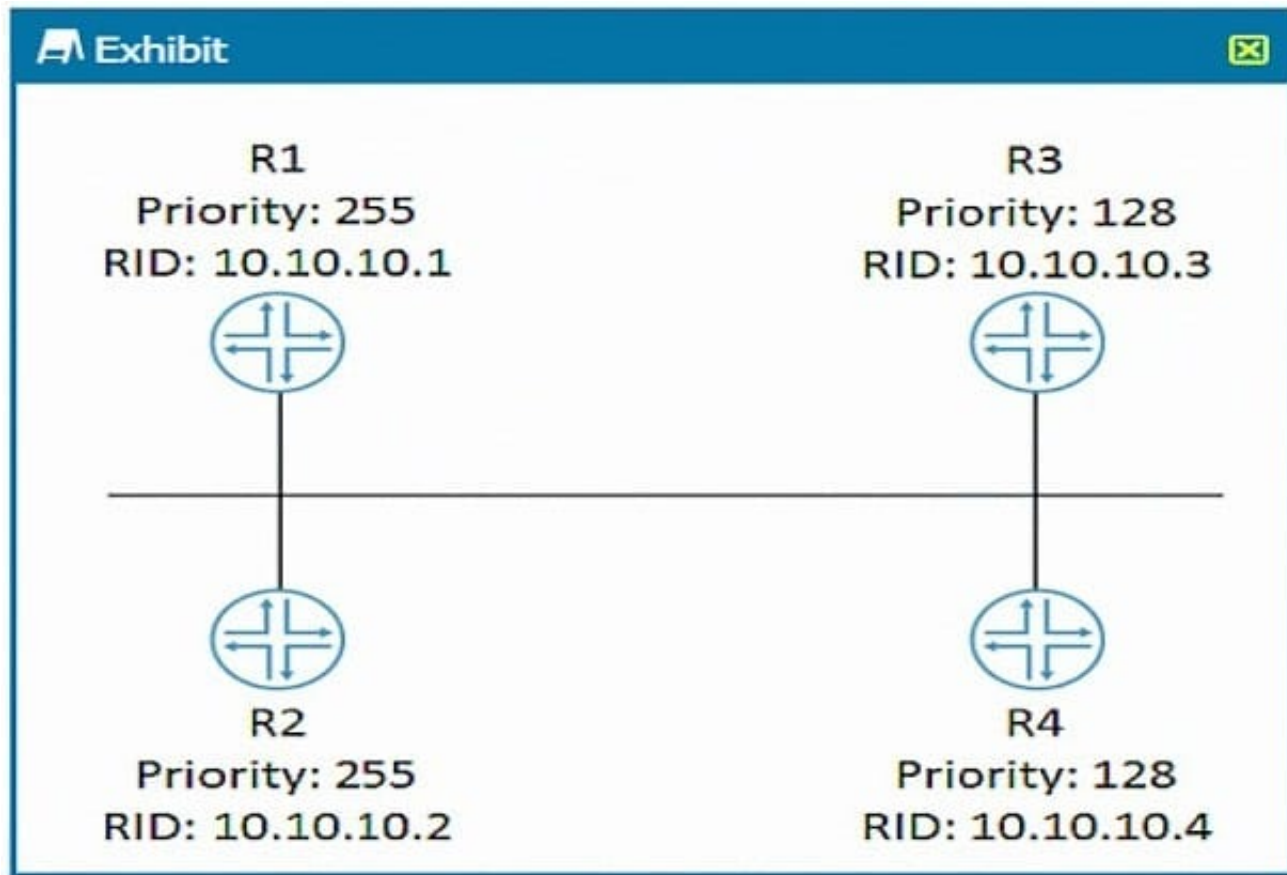
Following Questions and Answers are all new published by Juniper
Official Exam Center

-  **Instant Download** After Purchase
-  **100% Money Back** Guarantee
-  **365 Days** Free Update
-  **800,000+** Satisfied Customers



**QUESTION 1**

Click the Exhibit button.



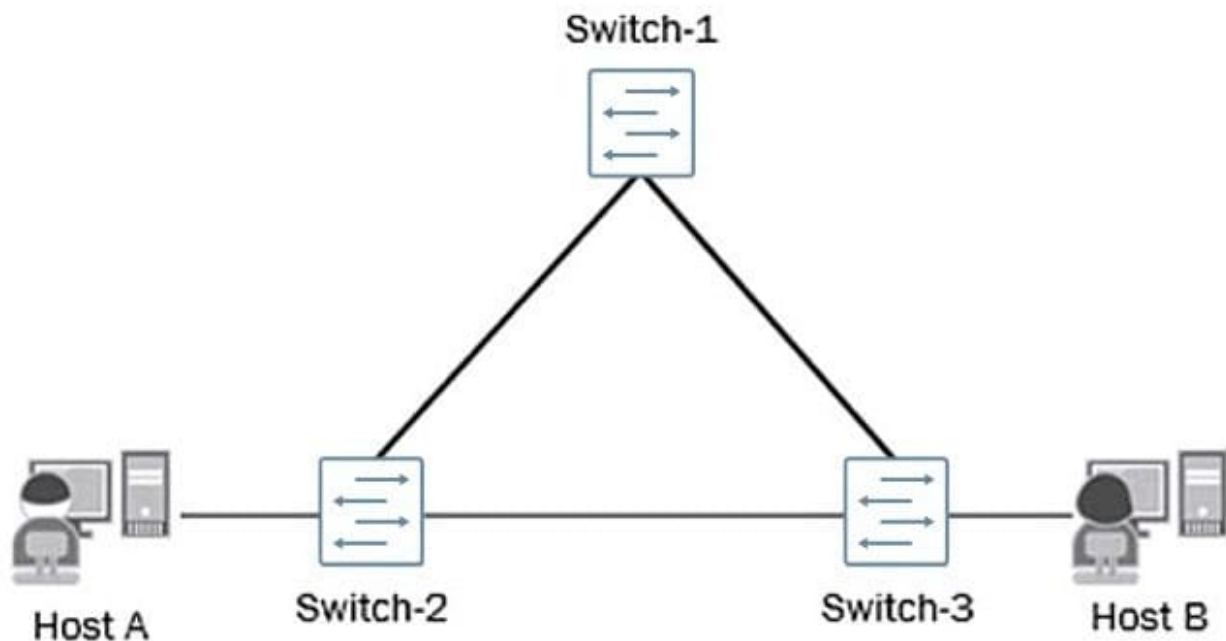
Referring to the exhibit, which router becomes the OSPF DR when all routers are powered on at the same time?

- A. R3
- B. R4
- C. R1
- D. R2

Correct Answer: D

QUESTION 2

Click the Exhibit button.



A number of reports from end users indicate that internal and external communications are intermittent and not reliable. You verified the status of the switch ports and have determined that they are up and operational. You also noticed a very high level of link bandwidth utilization on those same ports. The current topology of the affected environment is shown in the exhibit.

What would be the cause of the reported issues?

- A. A misconfigured interior gateway protocol (IGP).
- B. A lack of a loop-prevention mechanism or protocol.
- C. A lack of port-based ACLs filtering the traffic flows.
- D. A malformed route-based ACL improperly filtering traffic flows.

Correct Answer: B

QUESTION 3

Which two elements are used to create the STP bridge ID? (Choose two.)

- A. the root port number
- B. the bridge priority value
- C. the system MAC address
- D. the port cost

Correct Answer: BC



QUESTION 4

What are two characteristics of OSPF ABRs? (Choose two.)

- A. ABRs transmit routing information between the backbone and other areas.
- B. ABRs cannot be part of the backbone and another area at the same time.
- C. ABRs inject routing information from outside the OSPF domain.
- D. ABRs link two OSPF areas.

Correct Answer: AD

QUESTION 5

Click the Exhibit button.

```
user@host> show route 0/0 exact detail
inet.0: 14 destinations, 14 routes (14 active, 0 holddown, 0 hidden)
0.0.0.0/0 (1 entry, 1 announced)
    *Aggregate Preference: 130
        Next hop type: Router, Next hop index: 546
        Next-hop reference count: 4
Next hop: 172.30.25.1 via ge-0/0/1.100, selected
State: <Active Int Ext>
Local AS: 65400
Age: 1:03:46
Task: Aggregate
Announcement bits (2): 0-KRT 2-OSPF
AS path: I
Flags: Generate Depth: 0 Active
Contributing Routes (1):
10.0.0.0/16 proto BGP
```

Referring to the output shown in the exhibit, which two statements are true?

- A. The route is active
- B. The route is not active
- C. The route is a generate route
- D. The route is an aggregate route

Correct Answer: AC