



JN0-347^{Q&As}

Enterprise Routing and Switching, Specialist (JNCIS-ENT)

Pass Juniper JN0-347 Exam with 100% Guarantee

Free Download Real Questions & Answers **PDF** and **VCE** file from:

<https://www.passapply.com/jn0-347.html>

100% Passing Guarantee
100% Money Back Assurance

Following Questions and Answers are all new published by Juniper
Official Exam Center

-  **Instant Download** After Purchase
-  **100% Money Back** Guarantee
-  **365 Days** Free Update
-  **800,000+** Satisfied Customers





QUESTION 1

What are three extended BGP communities? (Choose three.)

- A. Origin: 172.16.100.100:100
- B. domain-id: 192.168.1.1:555
- C. extend:454:350
- D. 172.16.90.100:888
- E. target:65000:65000

Correct Answer: ABE

The BGP extended communities attribute format has three fields:

type: administrator: assigned-number. type is the type of extended community and can be either the 16-bit

numerical identifier of a specific BGP extended community or one of these types: origin-- Identifies where

the route originated. domain-id-- Identifies the OSPF domain from which the route originated. target-Identifies the destination to which the route is going.

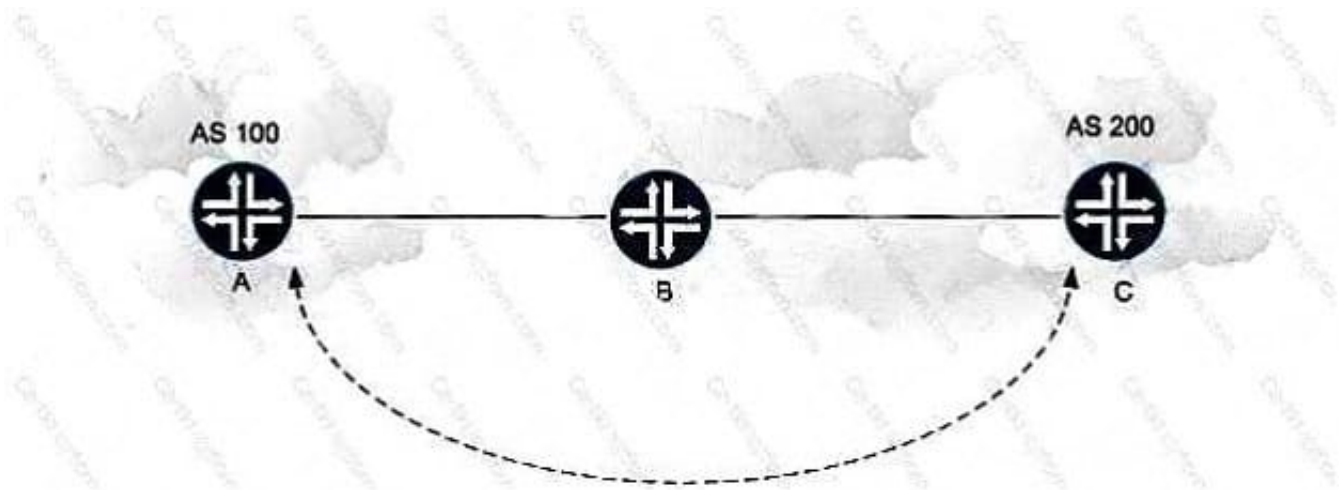
bandwidth-- Sets up the bandwidth extended community. Specifying link bandwidth allows you to distribute traffic unequally among different BGP paths.

rt-import-- Identifies the route to install in the routing table. src -as-- Identifies the AS from which the route originated.

You must specify an AS number, not an IP address.

QUESTION 2

Referring to the exhibit, you want router A to have an EBGP peering with router C. They are both connected through router B, which does not have BGP running, and has static routes configured.



What must be configured in the EBGP peer groups on routers A and C to make this connection possible?

- A. MED
- B. multihop
- C. multipath
- D. next-hop

Correct Answer: B

QUESTION 3

What are three types of port designation specific to Private VLANs? (Choose three.)

- A. Promiscuous ports
- B. Transparent ports
- C. PVLAN trunk ports
- D. Designated ports
- E. Isolated ports

Correct Answer: ACE

QUESTION 4

You want to provide reachability to your data center by advertising its subnet throughout your upstream peer AS.

However, you do not want this prefix advertised any further.



Which BGP community value would be used to meet this requirement?

- A. no-advertise
- B. no-export
- C. no-export-subconfed
- D. 65512 - 65535

Correct Answer: B

QUESTION 5

Which three BGP attributes are well-known and mandatory? (Choose three.)

- A. AS Path
- B. Next Hop
- C. MED
- D. Local Preference
- E. Origin

Correct Answer: ABE

[JN0-347 Practice Test](#)

[JN0-347 Study Guide](#)

[JN0-347 Brindumps](#)