



VCE & PDF

PassApply.com

<https://www.passapply.com/integration-architecture-designer.html>
2024 Latest passapply INTEGRATION-ARCHITECTURE-DESIGNER PDF and
VCE dumps Download

INTEGRATION-ARCHITECTURE- DESIGNER^{Q&As}

Salesforce Certified Integration Architecture Designer

**Pass Salesforce INTEGRATION-ARCHITECTURE-
DESIGNER Exam with 100% Guarantee**

Free Download Real Questions & Answers **PDF** and **VCE** file from:

<https://www.passapply.com/integration-architecture-designer.html>

100% Passing Guarantee
100% Money Back Assurance

Following Questions and Answers are all new published by Salesforce
Official Exam Center



VCE & PDF

PassApply.com

<https://www.passapply.com/integration-architecture-designer.html>
2024 Latest passapply INTEGRATION-ARCHITECTURE-DESIGNER PDF and
VCE dumps Download

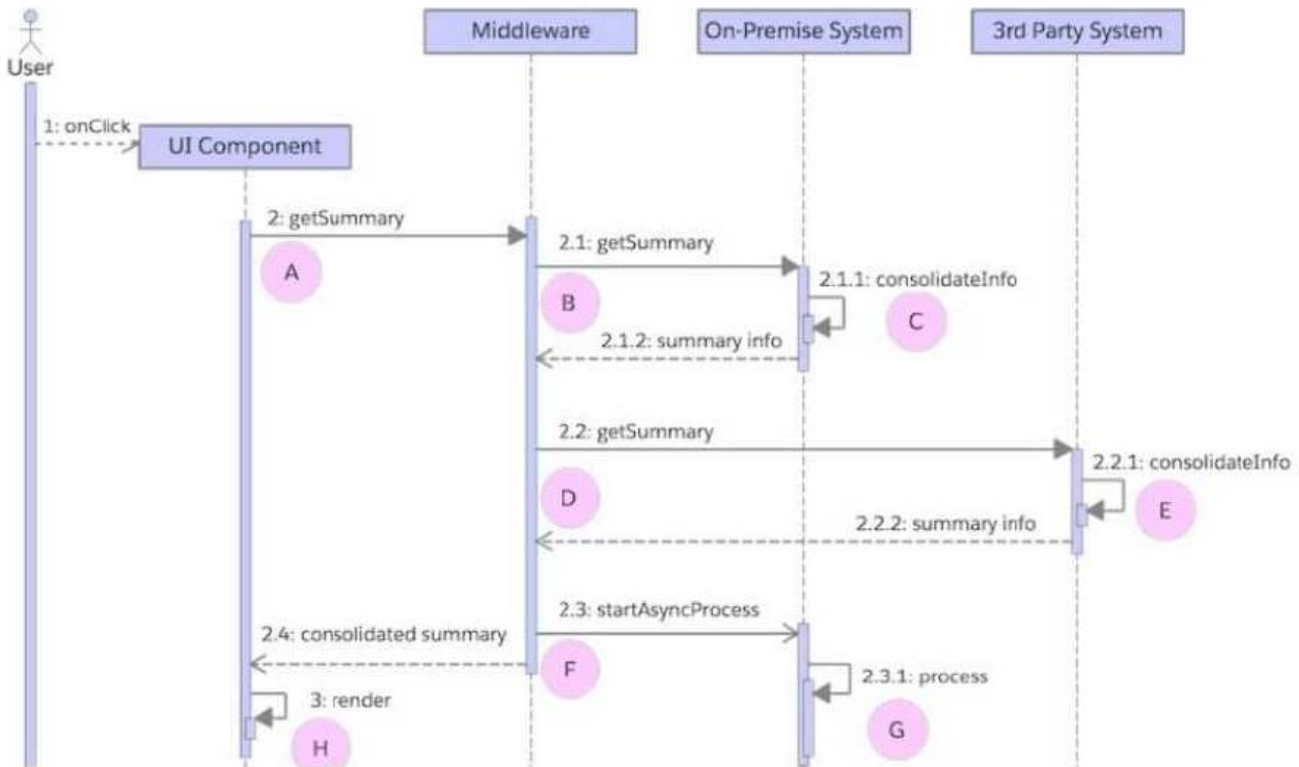
- ⚙️ **Instant Download** After Purchase
- ⚙️ **100% Money Back** Guarantee
- ⚙️ **365 Days** Free Update
- ⚙️ **800,000+** Satisfied Customers





QUESTION 1

A company's cloud-based single page application consolidates data local to the application with data from on premise and 3rd party systems. The diagram below typifies the application's combined use of synchronous and asynchronous calls.



The company wants to use the average response time of its application's user interface as a basis for certain alerts. For this purpose, the following occurs:

1. Log every call's start and finish date and time to a central analytics data store.
2. Compute response time uniformly as the difference between the start and finish date and time -- A to H in the diagram.

Which computation represents the end-to-end response time from the user's perspective?

- A. Sum of A to H
- B. Sum of A to F
- C. Sum of A, G, and H
- D. Sum of A and H

Correct Answer: D



QUESTION 2

An architect decided to use Platform Events for integrating Salesforce with an external system for a company.

Which three things should an architect consider when proposing this type of integration mechanism? Choose 3 answers

- A. To subscribe to an event, the integration user in salesforce needs read access to theevent entity.
- B. Salesforce needs to be able to store information about the external system in order toknow which event to send out.
- C. External system needs to have the same uptime in order to be able to keep up with Salesforce Platform Events.
- D. To publish an event, the integration user in salesforce needs create permission on the event entity.
- E. Error handling must be performed by the remote service because the event is effectively handed off to the remote system for further processing.

Correct Answer: ADE

QUESTION 3

Northern Trail Outfitters wants to use Salesforce as a front end for creating accounts using the lead- to-opportunity process.

1.

An order is created in Salesforce when the opportunity is closed and won, but the back-end ERP system is the data master for order,

2.

Customer wants to be able to see within Salesforce all the stages of order processing like Order

Created, Order Shipped, Order Paid that are within the retention window.

Which two message durability considerations should an Integration Architect make when designing a solution to meet these business requirements? Choose 2 answers

- A. When subscribing to Salesforce Event bus, ReplayID is used with a value of -2 to be able to see old and new events.
- B. High-volume event messages are stored for 24 hours (one day).
- C. When subscribing to Salesforce Event bus, ReplayID is used with a value of -1 to be able to see new events.
- D. High-volume event messages are stored for 72 hours (three days).

Correct Answer: AD

QUESTION 4



Universal Containers would like to ensure that the server and client-side app's identity is mutually authenticated for all integrations.

Which two of the integration patterns below support such authentication?

- A. Apex callout to the client-side app with the callout payload encrypted with custom Apex code.
- B. Outbound message received by client-side app that uses a Salesforce-provided client certificate.
- C. Apex callout with the client-side app that provides Salesforce with a CA-signed client certificate.
- D. Outbound message sent to a client-side app endpoint defined with a Per-User Named Credential.

Correct Answer: BC

QUESTION 5

Northern Trail Outfitters (NTO) has an integration set up between a Salesforce org and a quoting system. NTO would like to show a notification to all sales representatives that use Salesforce anytime the quoting system will be taken down for maintenance.

Which Salesforce API should an Integration Architect use to fulfill this requirement?

- A. Connect REST API
- B. Tooling API
- C. REST API
- D. Streaming API

Correct Answer: D

[INTEGRATION-ARCHITECTURE-DESIGNER PDF Dumps](#)

[INTEGRATION-ARCHITECTURE-DESIGNER VCE Dumps](#)

[INTEGRATION-ARCHITECTURE-DESIGNER Braindumps](#)