



# HPE6-A80<sup>Q&As</sup>

Aruba Certified Design Expert Written

**Pass HP HPE6-A80 Exam with 100% Guarantee**

Free Download Real Questions & Answers **PDF** and **VCE** file from:

<https://www.passapply.com/hpe6-a80.html>

100% Passing Guarantee  
100% Money Back Assurance

Following Questions and Answers are all new published by HP Official Exam Center

-  **Instant Download** After Purchase
-  **100% Money Back** Guarantee
-  **365 Days** Free Update
-  **800,000+** Satisfied Customers





### QUESTION 1

A customer requires new MCs for a large multi-site network with about 600 AP-535S and 30,000 wireless clients. The customer requires redundancy for the MCs, with each MC being able to handle the full load in a failover situation. The network should be able to sustain the loss of a controller with stateful failover within seconds. It should be able to undergo software upgrades without downtime.

The architect has recommended two 7240XM MCs. The customer points out that 7220 MCs can support their requirements and wonders why the architect recommended the 7240XMs.

What should the architect explain?

- A. The 7240XM MCs have better redundant power supplies and fan tray component capabilities than 7220 MCs.
- B. The 7240XM MCs can support full CPsec tunnels with this number of APs, while the 7220 MCs cannot.
- C. The 7240XM MCs provide a higher number of concurrent GRE tunnels to support 600 APs with MCs in L2 clustering.
- D. The 7240XM MCs are required to support the large number of wireless clients in this network.

Correct Answer: D

---

### QUESTION 2

A hospital needs an upgrade to 802.11ax for its wireless network, which needs to provide complete coverage. The hospital has a concrete exterior and uses drywalls for all of the interior walls with a few exceptions as mandated for safety. The building has 10-foot (3 m) ceilings. The hospital prefers to avoid the deployment of APs in rooms if possible. Exceptions include reception areas and lounges. The wireless network must support wireless medical devices, voice communicators for medical staff, laptops in nurse stations, medical staff tablets, and visitor and patient personal devices. All of these devices support both the 2.4GHz

and 5GHz band.

The exhibits below show one wing of one floor of the hospital. This wing is about 25,000 square feet (2,296 sq. m). The unlabeled rooms along the bottom of the wing are patient rooms. Other rooms such as lounges and the MR room are

labeled. This area has:

\*

up to 50 concurrent patients and visitors, who might have up to two devices

\*

about 200 medical and other types of wireless devices

The architect has already planned to place APs in stairwells on another floor.

Which AP plan for this wing of this floor meets the customer needs?



A.

Option A

B.

Option B

C.

Option C

D.

Option D

Correct Answer: A

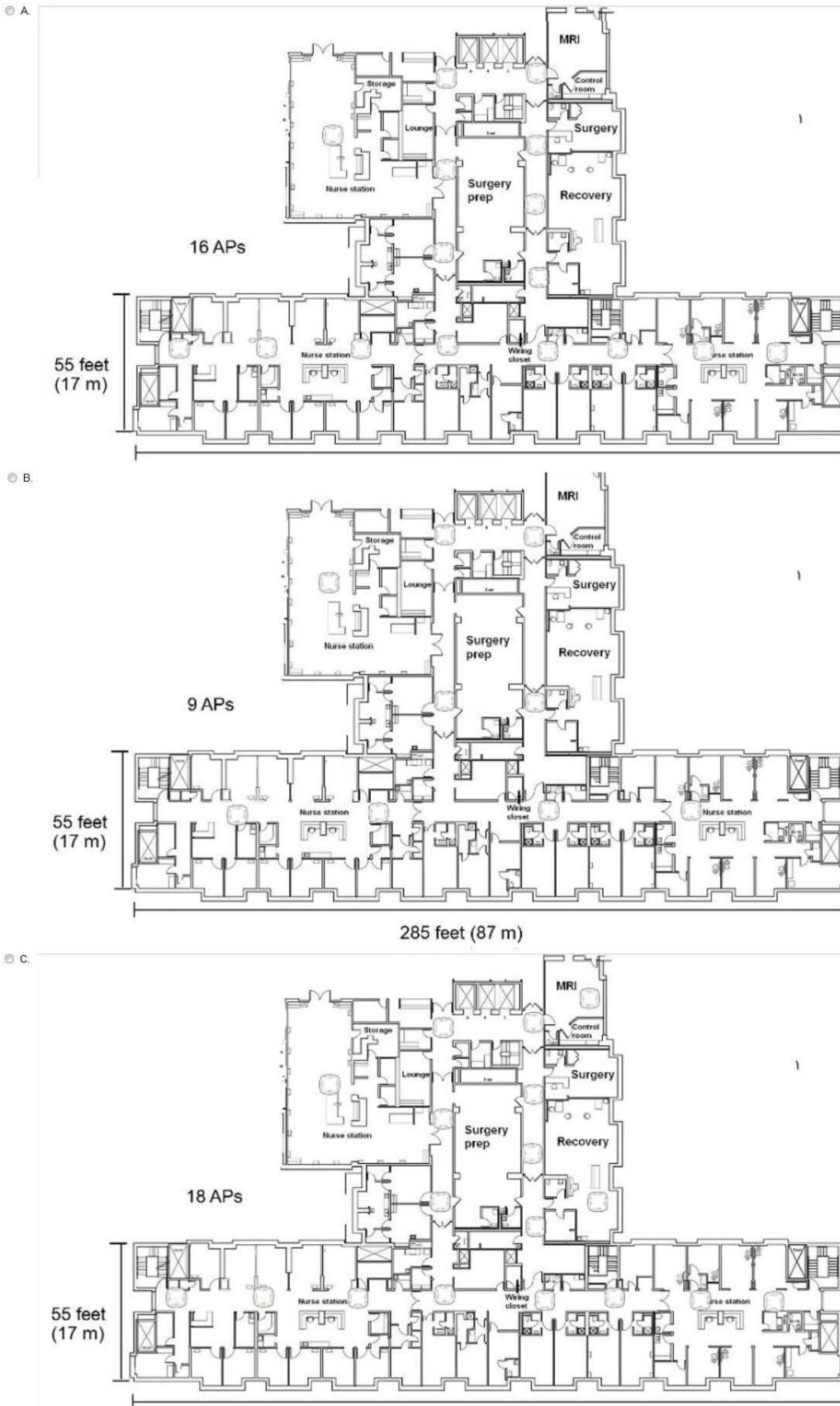


\* 40 concurrent staff members, who might have up to three devices

\* about 200 medical and other types of wireless devices

The architect has already planned to place APs in stairwells on another floor.

Which AP plan for this wing of this floor meets the customer needs?

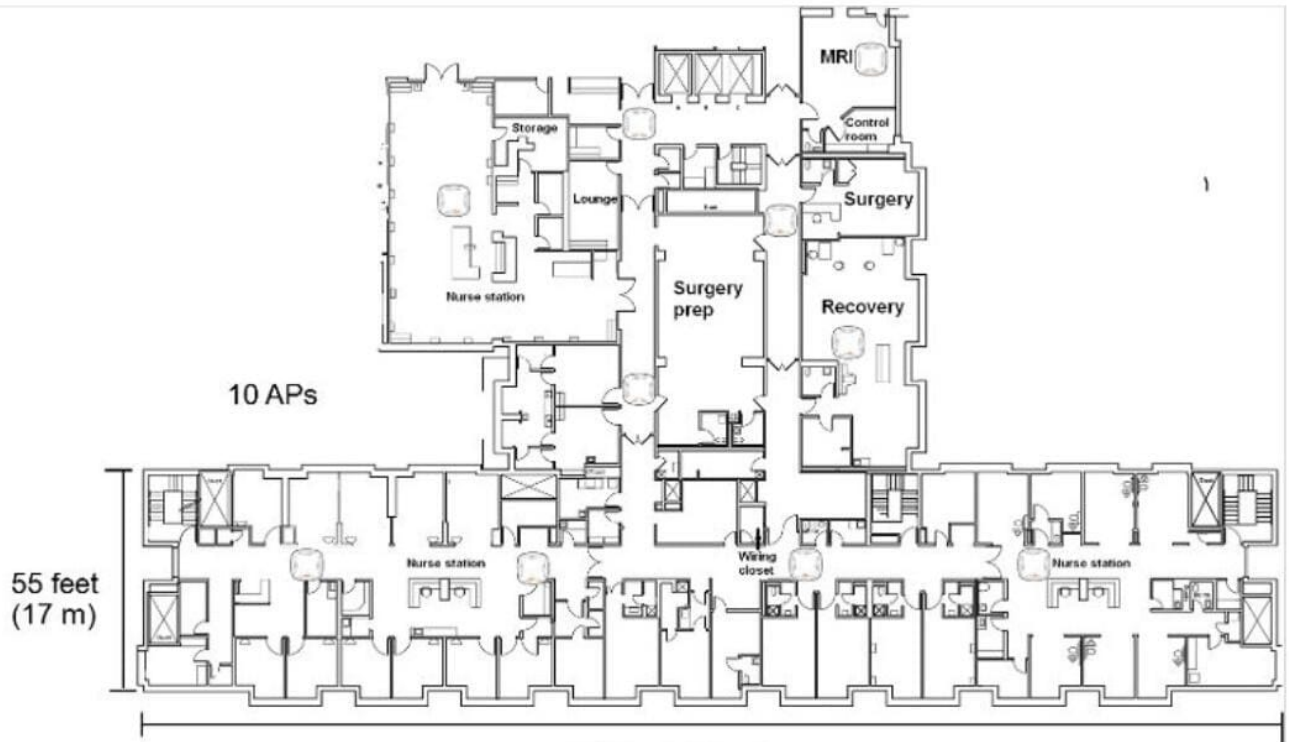




\*

40 concurrent staff members, who might have up to three devices

© D.



### QUESTION 3

A network architect plans to propose a virtual Mobility Master (VMM) for a new solution.

The solution will support up to 4,800

wireless client devices and include:

\*

two Virtual Mobility controllers (VMCs) in a cluster

\*

180 APs

Which licenses should the architect propose?

A.

1 MM-VA-500; 2 MC-VA-250; 540 Enterprise licenses

B.



1 MM-VA-1K; 2 MC-VA-25Q; one Enterprise license

C.

1 MM-VA-1K; 1 MC-VA-25Q; 180 Enterprise licenses

D.

1 MM-VA-500; 1 MC-VA-25Q; 180 Enterprise licenses

Correct Answer: C

---

#### QUESTION 4

A network architect needs to plan quality of service (QoS) for a hospital network. Which of these applications should receive the highest priority?

A. streaming IPTV in lobbies

B. cloud-based scheduling software

C. MRI image transfer

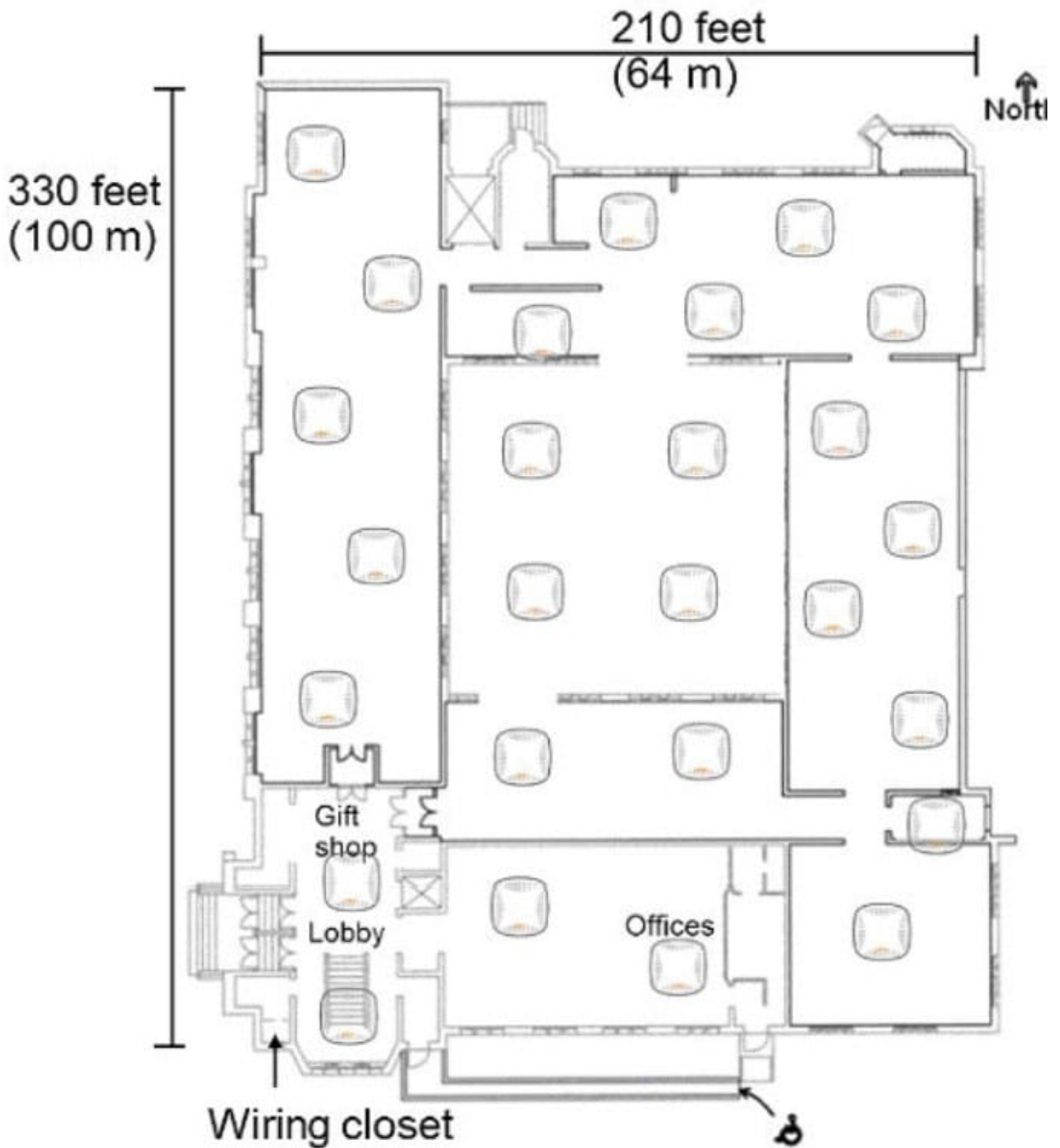
D. wireless voice communicator devices

Correct Answer: B

---

#### QUESTION 5

Refer to the exhibit.



A museum wants to add full 802.11ax wireless coverage across the building, which is about 210 feet (64 m) by 330 feet (100 m). The museum has 15-foot (4.6 m) ceilings and stone interior walls. The network needs to support up to 600

wireless guest devices

The exhibit also shows a preliminary plan for AP locations, the museum has eight Ethernet drops in the lobby and gift stop, but has otherwise not been wired.

What is one recommendation that the architect should make to ensure a successful deployment?



- A. Add about 10 APs to achieve adequate density
- B. Use directional antennas to avoid lost signal.
- C. Use at least CATS cable to connect to the APs.
- D. Add a wiring closet closer to the north side.

Correct Answer: D

[Latest HPE6-A80 Dumps](#)

[HPE6-A80 Practice Test](#)

[HPE6-A80 Braindumps](#)