



# HPE6-A80<sup>Q&As</sup>

Aruba Certified Design Expert Written

## Pass HP HPE6-A80 Exam with 100% Guarantee

Free Download Real Questions & Answers **PDF** and **VCE** file from:

<https://www.passapply.com/hpe6-a80.html>

100% Passing Guarantee  
100% Money Back Assurance

Following Questions and Answers are all new published by HP Official Exam Center

-  **Instant Download** After Purchase
-  **100% Money Back** Guarantee
-  **365 Days** Free Update
-  **800,000+** Satisfied Customers





**QUESTION 1**

Refer to the exhibit.

Features	7005	7008	7010	7024	7030
Maximum campus AP licenses	16	16	32	32	64
Maximum remote AP licenses	16	16	32	32	64
Maximum concurrent users/devices	1024	1,024	2,048	2,048	4,096
Maximum VLANs	4094	4094	4,094	4,094	4,094
Active firewall sessions	16,384	16,384	32,768	32,768	65,356
Concurrent GRE tunnels	256	256	512	512	1,024
Concurrent IPsec sessions	512	512	1,024	1,024	2,048
Mobility Access Switch tunneled-node ports	512	512	1,024	1,024	2,048
Firewall throughput	2 Gbps	2 Gbps	4 Gbps	4 Gbps	8 Gbps
Encrypted throughput (3DES, AES-CBC)	1.2 Gbps	1.2 Gbps	2.4 Gbps	2.4 Gbps	2.4 Gbps
Encrypted throughput (AES-	1.6 Gbps	1.6 Gbps	3.4 Gbps	3.4 Gbps	4 Gbps

Features	7005	7008	7010	7024	7030
Form factor/footprint	Compact	Compact	1 rack unit	1 rack unit	1 rack unit
Auto-negotiating 10/1000/1000BASE-T PoE+ ports	N/A	8	12	24	N/A
Auto-negotiating 10/1000/1000BASE-T ports	4	N/A	4	N/A	8 (combo)
Gigabit Ethernet ports (GBIC or SFP)	N/A	N/A	2 SFP	2 SFP+	8 (combo)
PoE power reserve	N/A	100W	150W	400W	N/A

A customer needs a new branch office solution that:

provides 802.11ac wireless access to local resources and the local Internet connection

connects wired and wireless users to resources at the main office in a secure manner

The office has 200 users, who will the up to two wireless devices at the same time. The architect has determined that the office requires 10-13 AP-515s. The customer wants to support a total bandwidth from an or me APS or about 2 cops.

The entire site is currently wired for CAT5e from a single wiring closet, which contains two access switches, a core



switch, and the Internet cable modem, which has 10/100/10QO Mbps BASE-T ports. The wired network will handle about

Gbps of traffic. The switches do not support POE/P0E+.

About 75 percent of all traffic is destined to the main office

The architect has looked up these specs for 7000 series controllers.

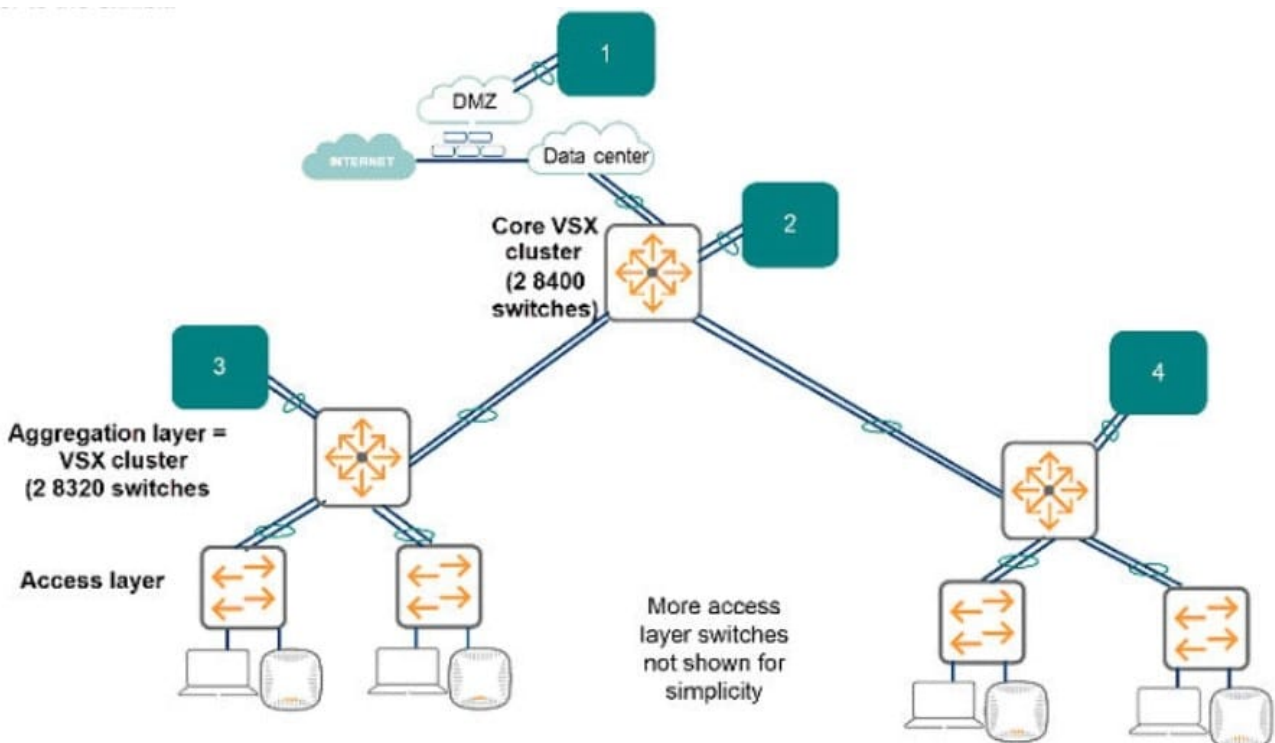
Which MC will meet the needs in the most cost-effective manner?

- A. 7024
- B. 7030
- C. 7010
- D. 7008

Correct Answer: A

## QUESTION 2

Refer to the exhibit.



A company needs a new wireless solution for its multi-site network. All branch sites must connect to the main site through



secure tunnels over the Internet. The customer requires full redundancy for the Mobility Controllers (MC). Including stateful failover and seamless roaming for the main site.

The architect plans to propose:

-500 RAPS

-100 APs at the main campus

-

two 7205 MCs

-

two 7210 MCS - one MM appliance The exhibit shows the existing wired network at the main site, which has a single building with two large floors.

Following the best-practices on design, performance and security, where should the architect plan to connect the MCs? (Potential locations are numbered in the exhibit.)

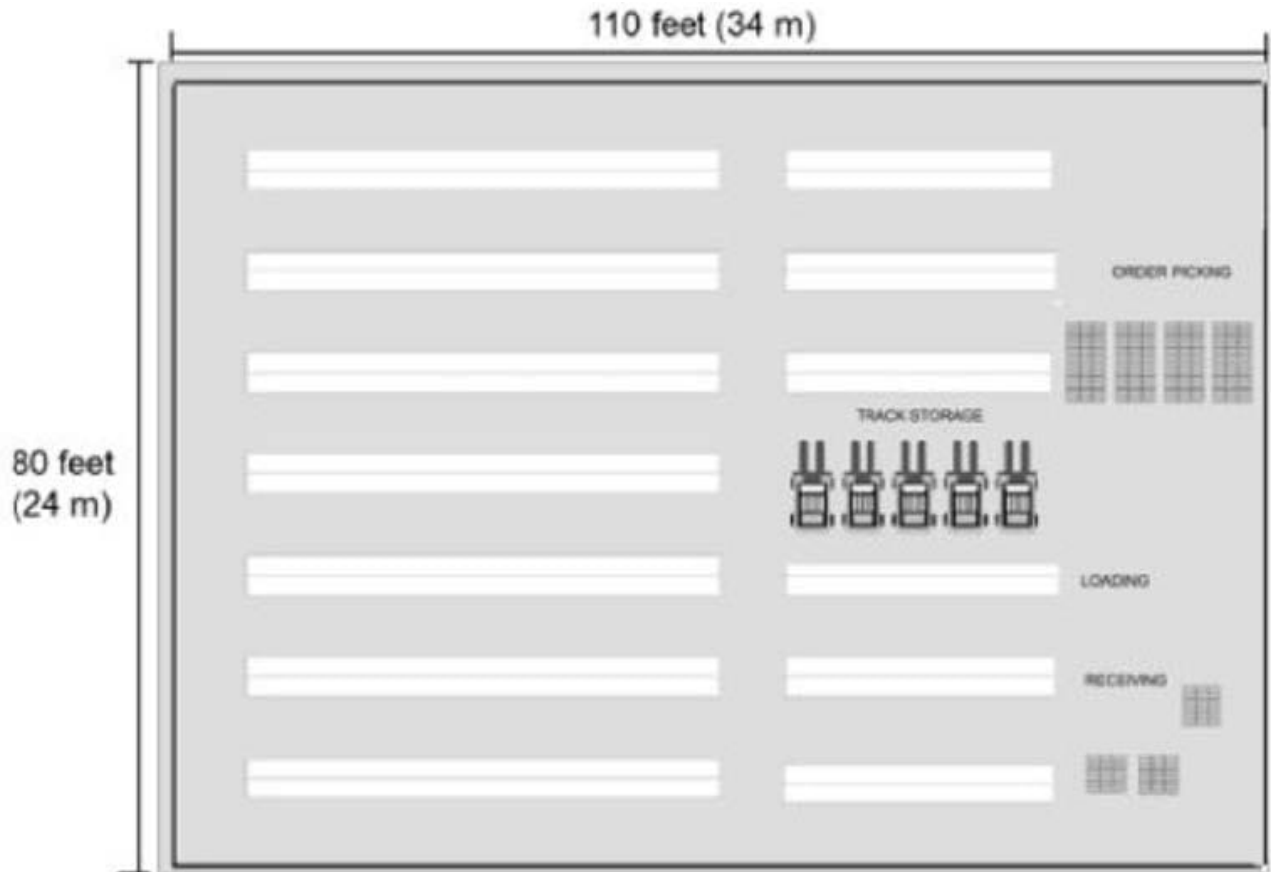
- A. two 7205 MCs at 2; two 7210 MCs at 1
- B. one 7205 MC at 3 and one at 4; two 7210 MCs at 1
- C. all of the MCs at 2
- D. two 7205 MCS at 1; two 7210 MCS at 2

Correct Answer: C

---

### QUESTION 3

Refer to the exhibit.



This warehouse has the dimensions shown in the exhibit. The warehouse is 20 feet (6 m) high up to a steel railing on the

ceiling. The shelves are about 16 feet (5m) high, and they hold large containers filled with fluid and metal equipment.

The customer needs consistent wireless coverage throughout the warehouse, mostly to support the tablets that employees use to run Inventory tracking and other applications. The warehouse staff works in shifts of 20.

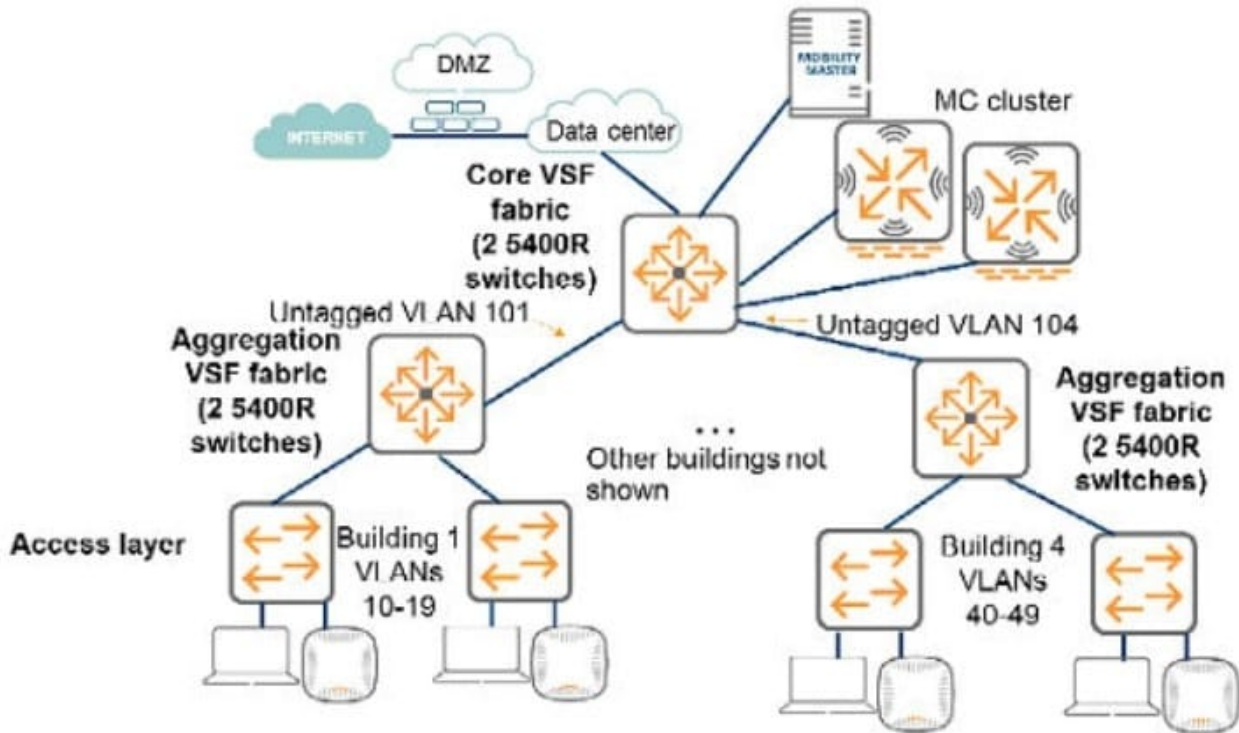
The architect has selected AP-515S. About how many APs should the architect propose?

- A. about 13-16
- B. about 23-32
- C. about 6-8
- D. about 6-4

Correct Answer: C

#### QUESTION 4

Refer to the exhibit.



A customer has the wired infrastructure shown in the exhibit. The customer is in the process of expanding their wireless services. They will now add a new wireless solution, with mobility controllers (MCs) connected as shown. The new wireless solution will support a total of 450 APs and about 26,000 wireless devices. It must provide seamless roaming across the entire campus.

After the new deployment, both wired and wireless devices experience IP connectivity issues.

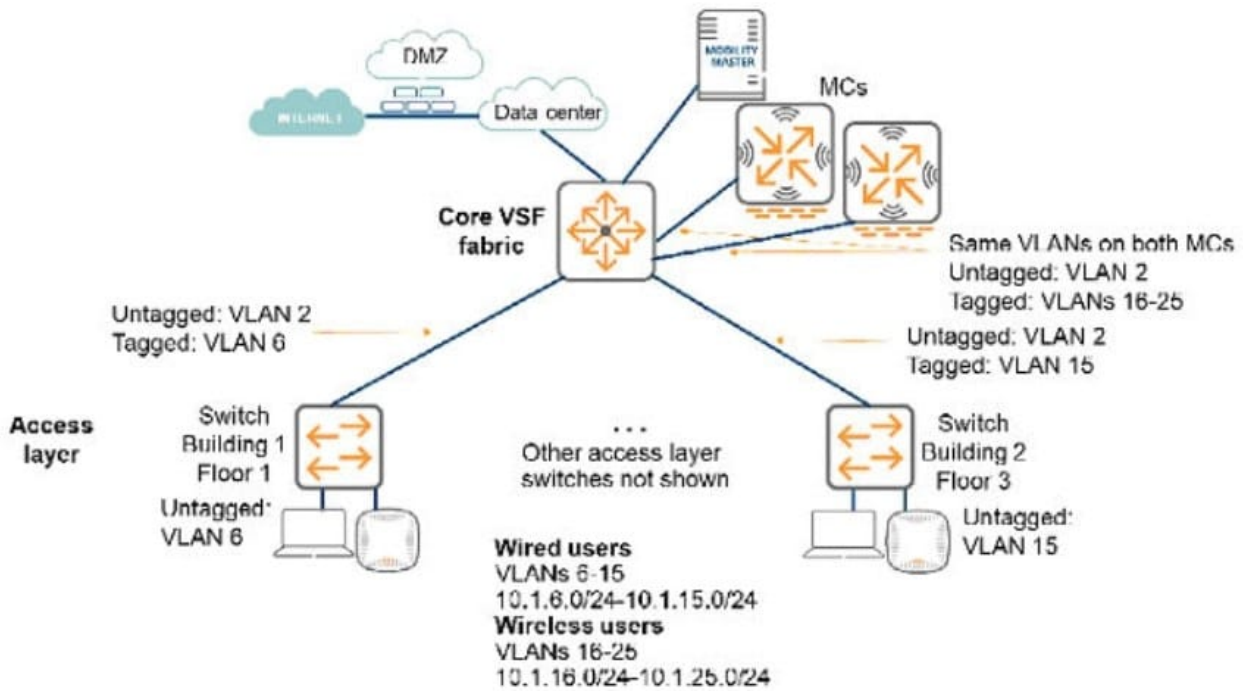
Which change to the existing infrastructure should the architect recommend to support all of the customer requirements?

- A. The wired VLANs should be combined into a single VLAN and a single subnet
- B. The core switches should be replaced with switches that have larger ARP tables.
- C. The MCs should be moved to the aggregation layer, and more MCs added
- D. The core and aggregation switches should disable Virtual Switching Framework (VSF).

Correct Answer: D

### QUESTION 5

Refer to the exhibit.



A customer needs a wireless network upgrade and has these requirements.

- 
- Support any applications used on a wired connection
- 
- Support up to 2500 wireless clients
- Support seamless roaming from floor to floor and building to building
- 

Continue to function seamlessly if one controller fails The architect has designed the logical infrastructure for the network as shown in the exhibit Which change should the architect make to better meet customer requirements and best practices?

- A. Combine the /25 subnets for wireless and wired users into a /16 subnet.
- B. Install additional Mobility Controller.
- C. Combine the /25 subnets for wireless users into a /20 subnet
- D. Place each controller in a different VLAN and subnet.



Correct Answer: B

[HPE6-A80 VCE Dumps](#)

[HPE6-A80 Study Guide](#)

[HPE6-A80 Exam Questions](#)