



HPE6-A75^{Q&As}

Aruba Certified Edge Professional Exam

Pass HP HPE6-A75 Exam with 100% Guarantee

Free Download Real Questions & Answers **PDF** and **VCE** file from:

<https://www.passapply.com/hpe6-a75.html>

100% Passing Guarantee
100% Money Back Assurance

Following Questions and Answers are all new published by HP Official Exam Center

-  **Instant Download** After Purchase
-  **100% Money Back** Guarantee
-  **365 Days** Free Update
-  **800,000+** Satisfied Customers





QUESTION 1

Refer to the exhibit.

Exhibit 1

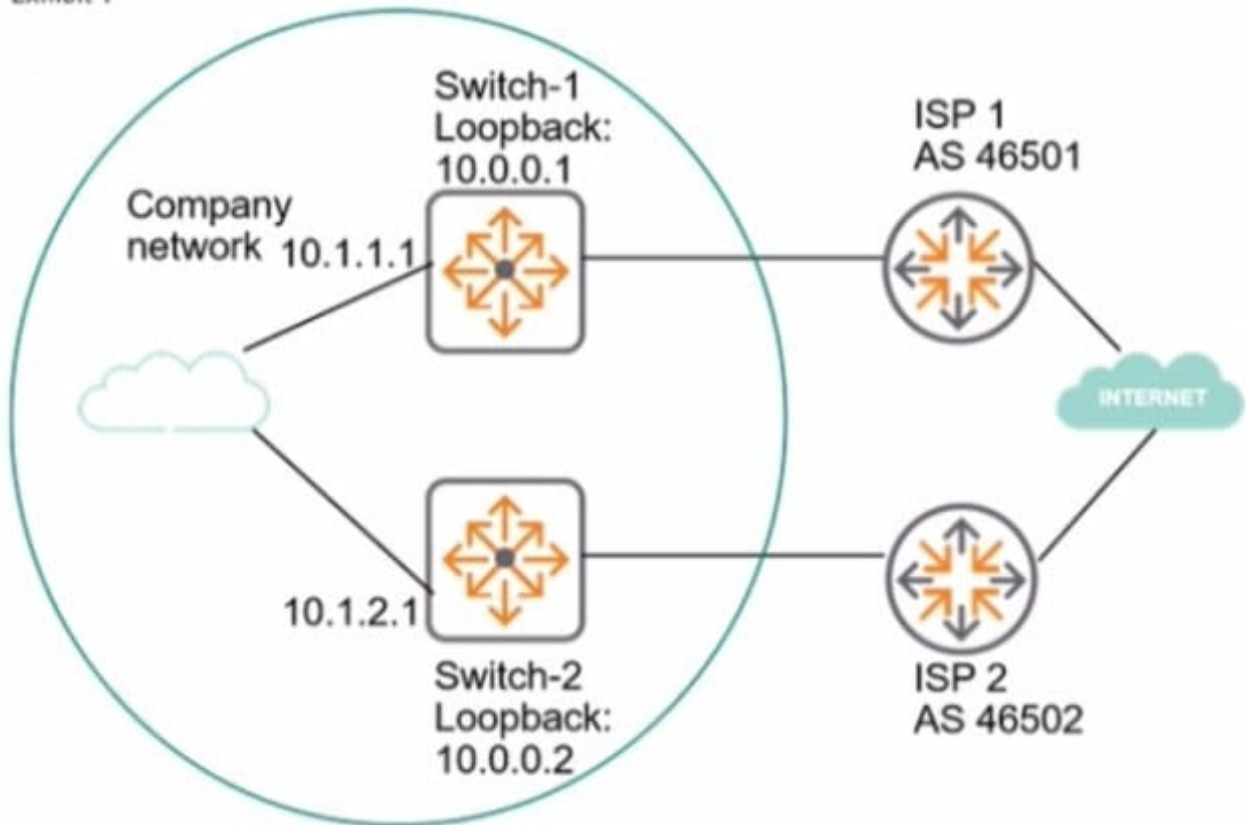




Exhibit 2

```
Switch-1# show ip bgp summary
```

Peer Information

Remote Address	Remote-AS	Local-AS	State	Admin Status
10.0.0.2	46500	46500	Connect	Start

```
Switch-1# show running-config router bgp
```

Running configuration:

```
router bgp 46500
  enable
  neighbor 10.0.0.2 remote-as 46500
  exit
```

```
Switch-2# show ip bgp summary
```

Peer Information

Remote Address	Remote-AS	Local-AS	State	Admin Status
10.0.0.1	46500	46500	Connect	Start

```
Switch-2# show running-config router bgp
```

Running configuration:

```
router bgp 46500
  enable
  neighbor 10.0.0.1 remote-as 46500
  exit
```

The network administrator needs to set up BGP between the two company switches. Switch-1 and Switch

2. The BGP connection does not establish. Based on the exhibits, what does the administrator need to do to fix the issue?

- A. Enable the multihop option for the neighbor on each of the switches.
- B. Enter the network command for 10.0.0.0/24 in the router BGP mode on each switch.
- C. Enable BGP on the interfaces that the switches use to reach each other.
- D. Set the update source for the neighbor to the local loopback interface on each switch.

Correct Answer: D



QUESTION 2

An administrator configures an ArubaOS-Switch for per-user tunneled node. Which protocols does the switch use to establish and maintain a connection with the Aruba Mobility Controller (MO)? (Select two.)

- A. GRE
- B. SSL
- C. PAPI
- D. IPSec

Correct Answer: AC

QUESTION 3

Refer to the exhibit.

Configuration » Services » Edit - CompanyX Onboard Authorization

Services - CompanyX Onboard Authorization

Conditions	Enforcement Profiles
1. (Date:Day-of-Week BELONGS_TO Monday, Tuesday, Wednesday, Thursday, Friday, Saturday, Sunday)	[Allow Access Profile], [Aruba Terminate Session]

Exhibit: accp67-543

Based on the configuration of the Enforcement Profiles In the Onboard Authorization service shown, which Onboarding action will occur?

- A. The device will be disconnected from the network after Onboarding so that an EAP-TLS authentication is not performed.
- B. The device will be disconnected from and reconnected to the network after Onboarding is completed.
- C. The device's onboard authorization request will be denied.
- D. The device will be disconnected after post-Onboarding EAP-TLS authentication, so a second EAP-TLS authentication is performed.
- E. After logging in on the Onboard web login page, the device will be disconnected from and reconnected to the network before Onboard begins.

Correct Answer: B



QUESTION 4

An administrator implements a standalone controller that runs ArubaOS 8.x. Which feature should the administrator configure to optimize the RF operation for the company's WLAN?

- A. AirMatch
- B. Clustering
- C. ARM
- D. Zones

Correct Answer: A

QUESTION 5

An administrator configures the MultiZone feature for a company network, where a mobility cluster is the primary zone and a standalone controller in the company's DMZ represents a secondary data zone. The administrator configures two AP Groups and respective VAPs for the zones on the Mobility Master (MM) in the primary zone. When the APs boot up and establish connections to both zones, the administrator notices that no data connections are established to the data zone.

What must the administrator do to fix this problem?

- A. Configure the same AP Groups and VAPs on the standalone controller, and associate the MultiZone APs to both groups.
- B. Configure the same AP Group in the data zone as it is in the primary zone, and configure the VAPs in the data zone.
- C. Have the MultiZone APs initially boot from the standalone controller in the data zone.
- D. Create different AP groups and VAPs on the Mobility Master and standalone controllers, and associate the MultiZone APs to both groups.

Correct Answer: D

[HPE6-A75 Practice Test](#)

[HPE6-A75 Study Guide](#)

[HPE6-A75 Braindumps](#)