



HPE6-A72^{Q&As}

Aruba Certified Switching Associate Dumps

Pass HP HPE6-A72 Exam with 100% Guarantee

Free Download Real Questions & Answers **PDF** and **VCE** file from:

<https://www.passapply.com/hpe6-a72.html>

100% Passing Guarantee
100% Money Back Assurance

Following Questions and Answers are all new published by HP Official Exam Center

-  **Instant Download** After Purchase
-  **100% Money Back** Guarantee
-  **365 Days** Free Update
-  **800,000+** Satisfied Customers





QUESTION 1

You have completed a successful VSF stack between two switches.

Without manually assigning a backup switch, what is the expected output when issuing a show vsf command?



- A. T1-6300-A# show vsf
<omitted>
Mbr Mac Address type Status ID

1 88:3a:30:a3:e5:40 JL660A Commander
2 88:3a:30:a6:d9:80 JL660A Secondary
- B. T1-6300-A# show vsf
<omitted>
Mbr Mac Address type Status ID

1 88:3a:30:a3:e5:40 JL660A Primary
2 88:3a:30:a6:d9:80 JL660A Secondary
- C. T1-6300-A# show vsf
<omitted>
Mbr Mac Address type Status ID

1 88:3a:30:a3:c5:40 JL660A Master
2 88:3a:30:a6:d9:80 JL660A Member
- D. T1-6300-A# show vsf
<omitted>
Mbr Mac Address type Status ID

1 88:3a:30:a3:e5:40 JL660A Master
2 88:3a:30:a6:d9:80 JL660A Standby

A. Option A

B. Option B



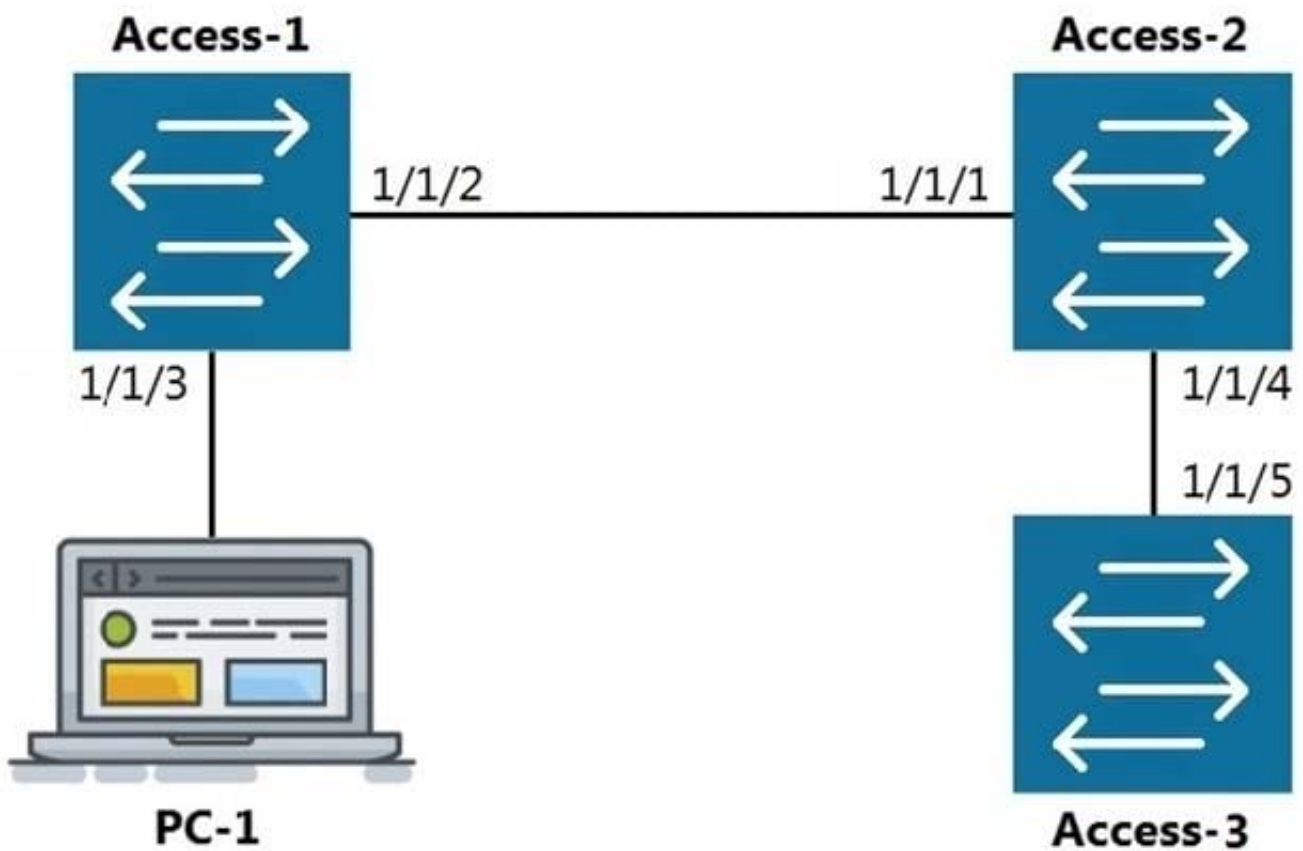
C. Option C

D. Option D

Correct Answer: D

QUESTION 2

Refer to the exhibit.



LLDP

The command `show LLDP neighbor-info` gets typed into Access-1. All switches are Aruba OS-CX switches.

What is the output of this command?



- A.
- | LOCAL-PORT | CHASSIS-ID | PORT-ID | PORT-DESC | TTL | SYS-NAME |
|------------|-------------------|---------|-----------|-----|----------|
| 1/1/1 | 90:20:c2:bc:ed:00 | 1/1/2 | 1/1/2 | 120 | Access-2 |
| 1/1/5 | 90:20:c2:bc:ef:00 | 1/1/2 | 1/1/2 | 120 | Access-3 |
- B.
- | LOCAL-PORT | CHASSIS-ID | PORT-ID | PORT-DESC | TTL | SYS-NAME |
|------------|-------------------|---------|-----------|-----|----------|
| 1/1/1 | 90:20:c2:bc:ed:00 | 1/1/2 | 1/1/2 | 120 | Access-2 |
- C.
- | LOCAL-PORT | CHASSIS-ID | PORT-ID | PORT-DESC | TTL | SYS-NAME |
|------------|-------------------|---------|-----------|-----|----------|
| 1/1/2 | 90:20:c2:bc:ed:00 | 1/1/1 | 1/1/1 | 120 | Access-2 |
| 1/1/2 | 90:20:c2:bc:ef:00 | 1/1/5 | 1/1/5 | 120 | Access-3 |
- D.
- | LOCAL-PORT | CHASSIS-ID | PORT-ID | PORT-DESC | TTL | SYS-NAME |
|------------|-------------------|---------|-----------|-----|----------|
| 1/1/2 | 90:20:c2:bc:ed:00 | 1/1/1 | 1/1/1 | 120 | Access-2 |

A. Option A

B. Option B

C. Option C

D. Option D

Correct Answer: D

QUESTION 3

What are two OSPF attributes within the hello messages that must match to successfully establish neighbor relationships? (Choose two.)

A. Router ID

B. Priority

C. Hello and Dead intervals

D. Area ID

E. Process ID

Correct Answer: CD



QUESTION 4

Refer to the exhibit.

```
Switch-1(config)# show spanning-tree | exclude Disabled
```

←----- output omitted ----->

Port	Role	State	Cost	Priority	Type
1/1/1	Designated	Forwarding	4000	128	point_to_point
Lag1	 	Forwarding	2000	64	point_to_point
1/1/2	Designated	Forwarding	10000	128	point_to_point
1/1/3	Designated	Forwarding	20000	128	point_to_point

Switch-1 is not the root bridge. The ports shown are all the connected pointto point interfaces. What Role (hidden by the blue rectangle) will be assigned to the Lag 1 interface?

- A. Alternate
- B. Backup
- C. Root
- D. Designated

Correct Answer: C

QUESTION 5

With what other technology does Half Duplex communication closely match?

- A. a pair of fiber optic strands allowing transmit on one and receive on the other at the same time
- B. a mobile phone call
- C. point-to-point connections between two switches allowing concurrent transmit and receive
- D. CB radio using push-to-talk

Correct Answer: D



VCE & PDF

PassApply.com

<https://www.passapply.com/hpe6-a72.html>

2024 Latest passapply HPE6-A72 PDF and VCE dumps Download

[HPE6-A72 PDF Dumps](#)

[HPE6-A72 VCE Dumps](#)

[HPE6-A72 Practice Test](#)