



# HPE6-A49<sup>Q&As</sup>

Aruba Certified Design Expert 8 Written Exam

**Pass HP HPE6-A49 Exam with 100% Guarantee**

Free Download Real Questions & Answers **PDF** and **VCE** file from:

<https://www.passapply.com/hpe6-a49.html>

100% Passing Guarantee  
100% Money Back Assurance

Following Questions and Answers are all new published by HP Official Exam Center

-  **Instant Download** After Purchase
-  **100% Money Back** Guarantee
-  **365 Days** Free Update
-  **800,000+** Satisfied Customers





**QUESTION 1**

A hospital needs a better way to track its inventory, including wireless medical devices that are moved around the site a lot.

Which solution meets these needs?

- A. Aruba asset tags and beacons
- B. Aruba asset tags, APs, and Meridian
- C. Aruba beacons, APs, and AirWave
- D. Aruba beacons and Meridian

Correct Answer: A

**QUESTION 2**

Refer to the exhibit.

Line#	Part Number	Description	Manufacturer	Unit Price	Quantity	Total	Price List
1.00	JX918A	Aruba AirWave DL360 Professional Edition Hardware Appla	Hewlett Packard Enter...	\$37,995.00	2	\$75,990.00	USA Price List (USD)
1.01	H5ASSE	Aruba 1Y-FC NBO Exch AW DL360 PRO SVC [for JX918A]	Hewlett Packard Enter...	\$7,524.00	2	\$15,048.00	USA Price List (USD)
2.00	JW546AAE	Aruba LOC-AW Aruba Airwave with RAPIDS and VisualRF 1...	Hewlett Packard Enter...	\$75.00	1000	\$75,000.00	USA Price List (USD)
2.01	H2YV3E	Aruba 1Y FC 24x7 Airwave 1 Dev E-LTU SVC [for JW546A]	Hewlett Packard Enter...	\$12.00	1000	\$12,000.00	USA Price List (USD)
		<b>Quote Total</b>				<b>\$178,038</b>	

A customer needs an AirWave solution that can manage 1000 devices. The customer wants a hardware solution and active/standby redundancy for the solution.

The exhibit shows the BOM that the architect has created.

Which corrections should the architect make?

- A. Change the active appliance to an Enterprise appliance.
- B. Add 1000 additional AirWave managed device licenses.
- C. Change both of the appliances to Enterprise appliance.



D. Add a failover license for 1000 managed devices.

Correct Answer: C

---

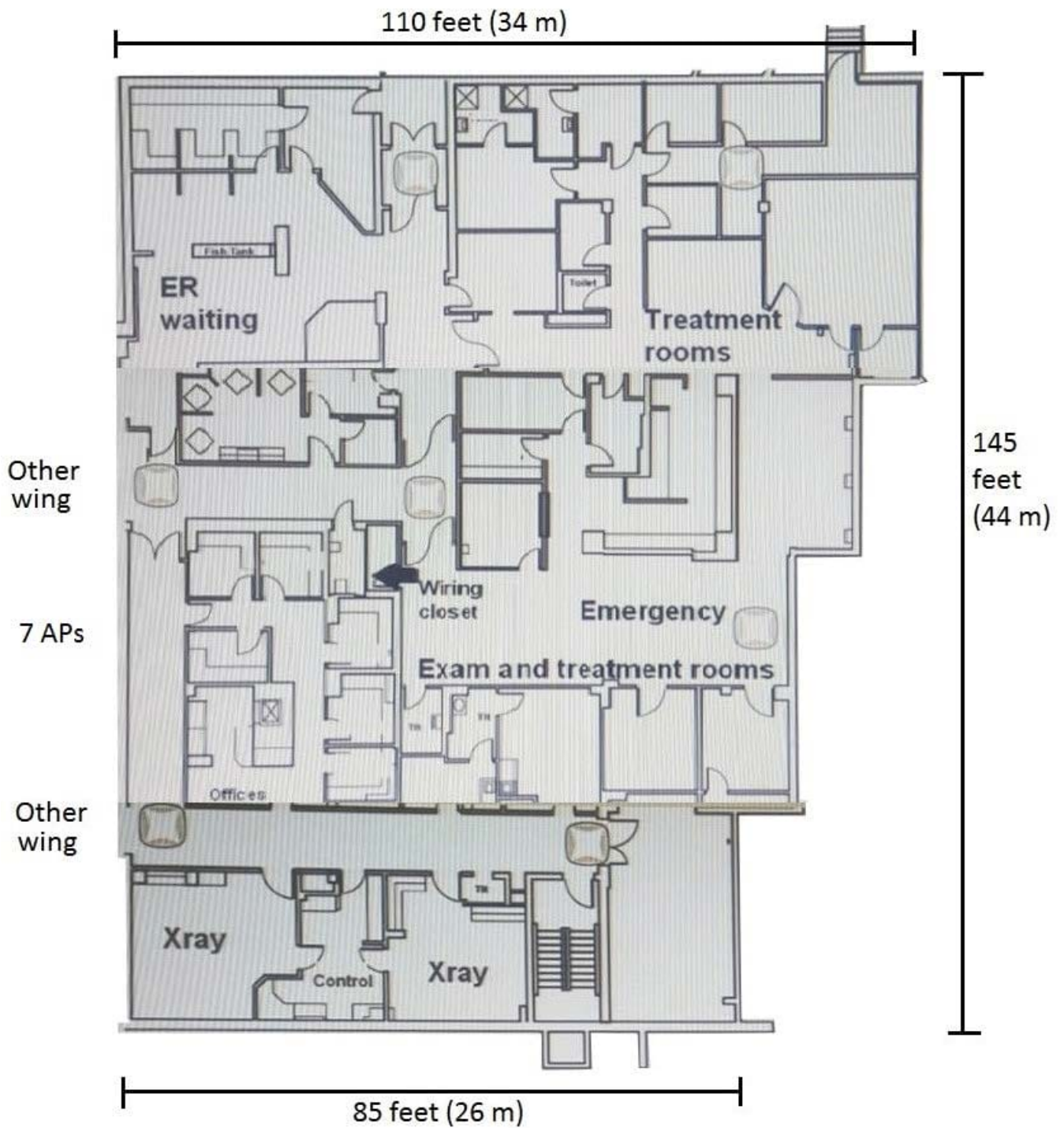
### QUESTION 3

A hospital needs an upgrade to 802.11ac for its wireless network, which needs to provide complete coverage. The hospital has a concrete exterior and uses drywalls for all of the interior walls with a few exceptions as mandated for safety. The building has 10 foot (3m) ceilings. The legacy APs were deployed in the hallway, but the customer is open to deploying APs in any room such as reception areas, patient rooms, operating rooms, treatment rooms, and lounges. The wireless network must support wireless medical devices, voice communicators for medical staff, laptops in nurse stations, medical staff tablets, and visitor and patient personal devices. All of these devices support both the 2.4GHz and 5GHz band. The exhibits below show one wing of one floor of the hospital. This wing is about 14,000 square feet (1300 sq. m). This area has up to: 40 concurrent patients and visitors, who might have up to two devices 40 concurrent staff members, who might have up to three devices About 100 medical and other types of wireless devices

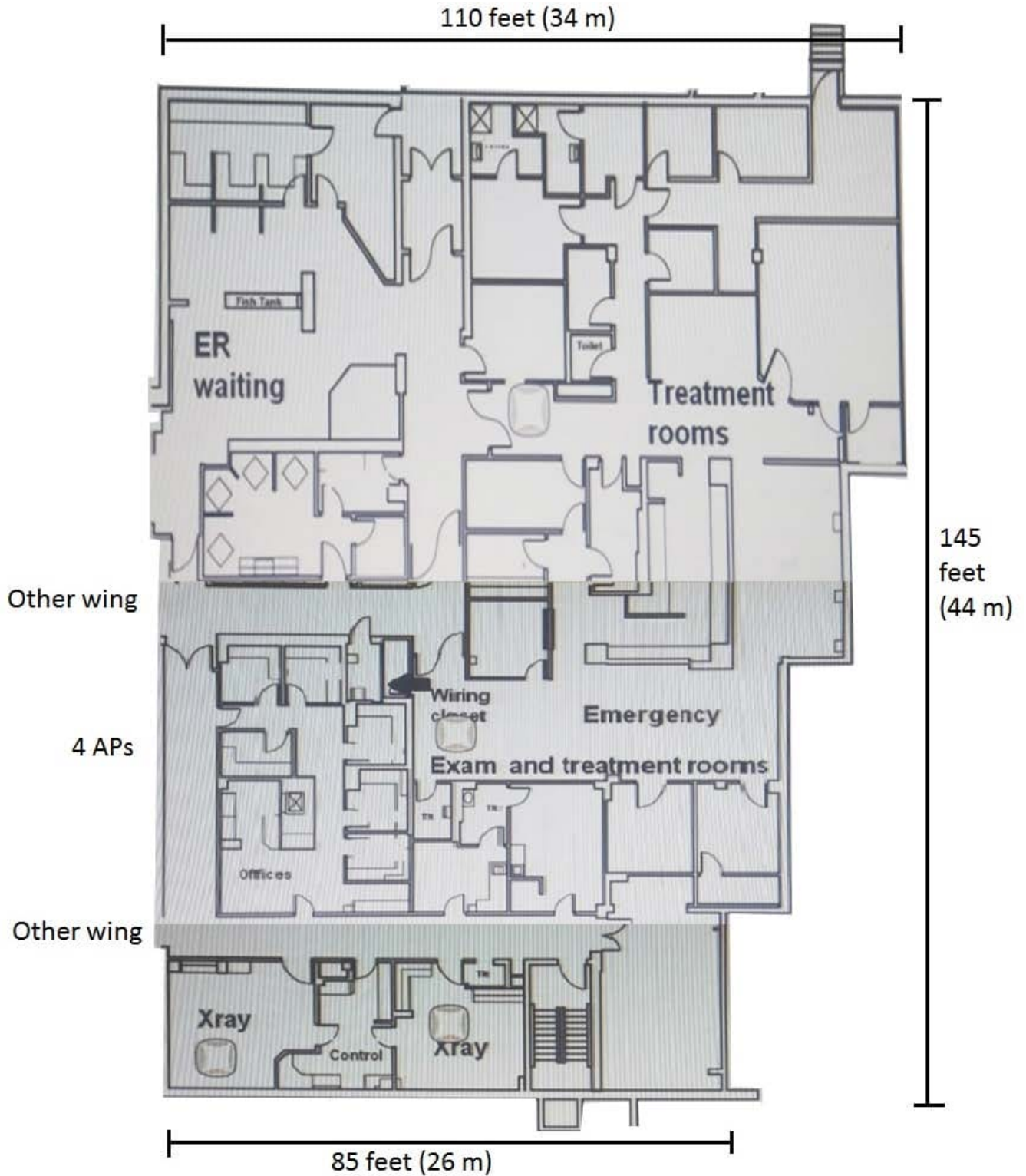
Several of these wireless medical devices are in the X-ray and X-ray control rooms. The architect has already planned to place APs in stairwells on another floor.

Which AP plan for this wing of this floor meets the customer needs?

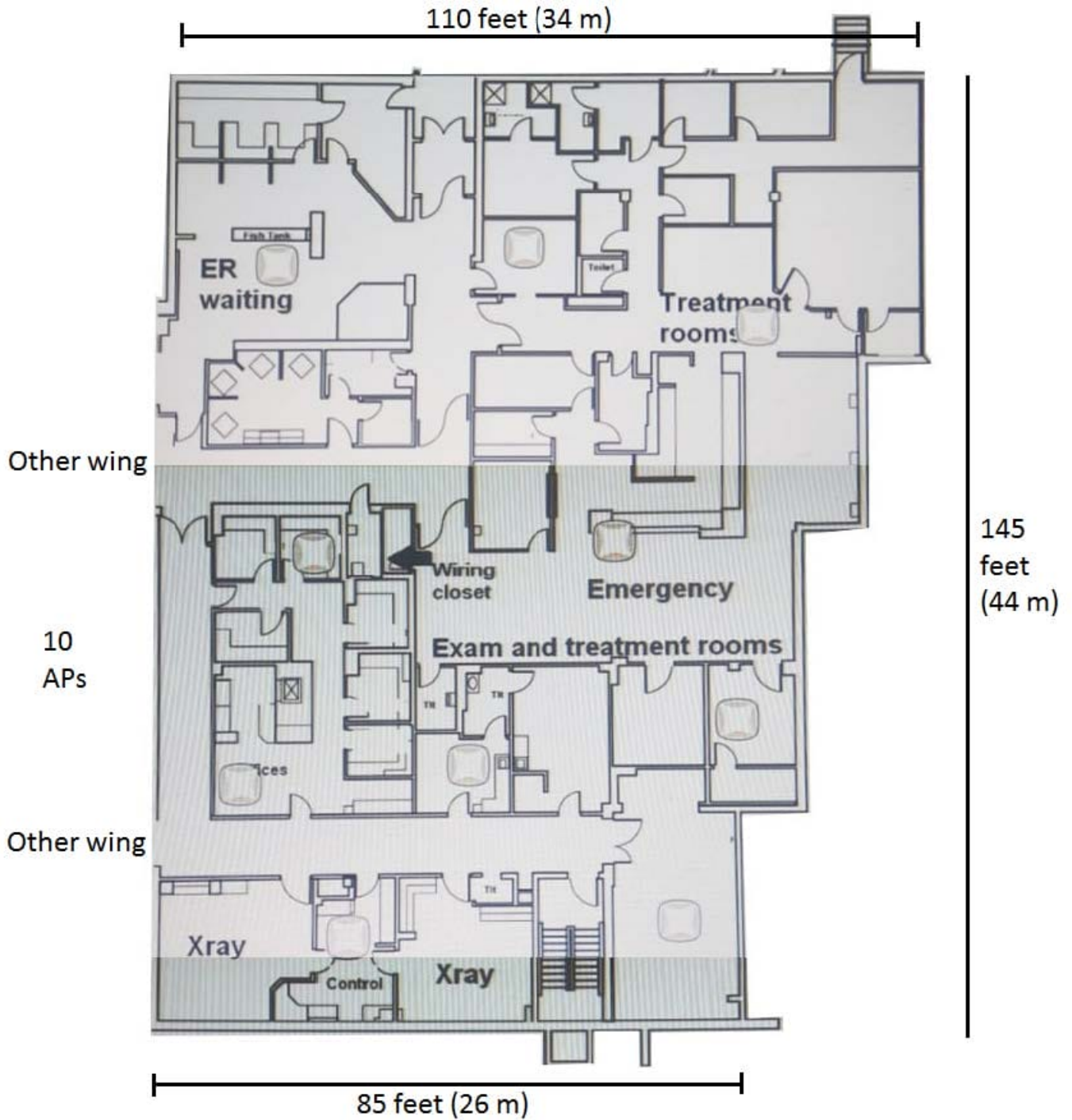
A.



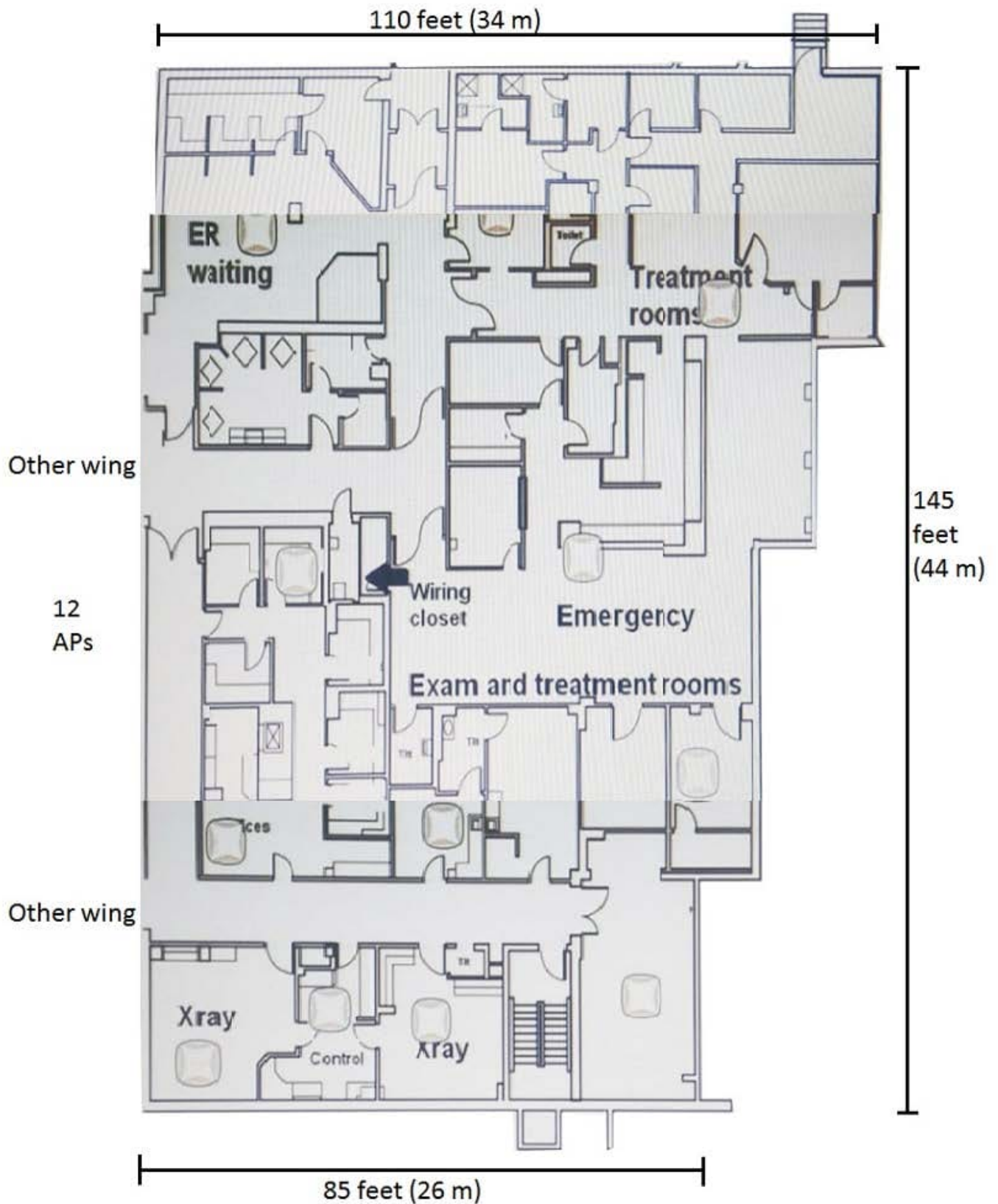
B.



C.



D.



Correct Answer: D



#### QUESTION 4

What is one reason that an architect might choose to use pico-cell coverage rather than overhead in a stadium?

- A. to avoid major rewiring and construction concerns
- B. to save money by using less powerful and less expensive APs in the deployment
- C. to support a higher device density with a higher level of channel reuse
- D. to maximize coverage per-AP through the use of calculated directional antennas

Correct Answer: C

---

#### QUESTION 5

A retailer wants to provide wireless services for guests across a section of store floor, which consists of 82 foot (25m) long aisles of cans and dry food goods. The shelves are six feet (1.8 m) high, and the ceiling height is 13 feet (4 m) high. The architect recommends overhead APs deployed at 40-50 foot (12 to 15 m) intervals every few aisles rather than in every aisle.

What is one factor that justifies this recommendation?

- A. the low transmit power of most guest devices
- B. the low shelf height relative to ceiling height
- C. the aisle length
- D. the low ceiling height

Correct Answer: B

[HPE6-A49 VCE Dumps](#)

[HPE6-A49 Practice Test](#)

[HPE6-A49 Brindumps](#)