



HPE6-A49^{Q&As}

Aruba Certified Design Expert 8 Written Exam

Pass HP HPE6-A49 Exam with 100% Guarantee

Free Download Real Questions & Answers **PDF** and **VCE** file from:

<https://www.passapply.com/hpe6-a49.html>

100% Passing Guarantee
100% Money Back Assurance

Following Questions and Answers are all new published by HP Official Exam Center

-  **Instant Download** After Purchase
-  **100% Money Back** Guarantee
-  **365 Days** Free Update
-  **800,000+** Satisfied Customers





QUESTION 1

A customer has multiple, very small branch sites that require just one or two APs each. The office has a local Internet connection, but the traffic is destined to the corporate data center, which has an Aruba wireless solution.

Which branch office solution best meets the customer needs?

- A. RAPs and 7005 branch office controllers with an SD-WAN license
- B. RAPs and no branch office controllers
- C. CAPs and 7005 branch office controllers
- D. IAPs and 7005 branch office controllers with an SD-WAN license

Correct Answer: D

QUESTION 2

Case study

A customer needs a wireless network upgrade for 802.11ac and possibly an upgrade to the wired network.

The customer requires dual-radio 802.11ac APs, each radio of which can support 4x4 MIMO at full feature set.

The customer has given architects this information about their wireless devices:

2700 IoT devices which will have only wireless connections; they support WPA2 with 802.1X

300 on each floor in 3 buildings with 3 floors each

5,400 users, who use devices such as laptops and smartphones

600 users on each floor in 3 buildings with 3 floors each

24 security cameras which will have only wireless connections; they support WPA2 with 802.1X and have a local power source

4 on floor 1 of each of the 3 buildings

2 on the other 6 floors

The architect also has collected information about the existing wired network.

The existing access layer switches support these features:

10/100/1000 edge ports



PoE (802.3af)

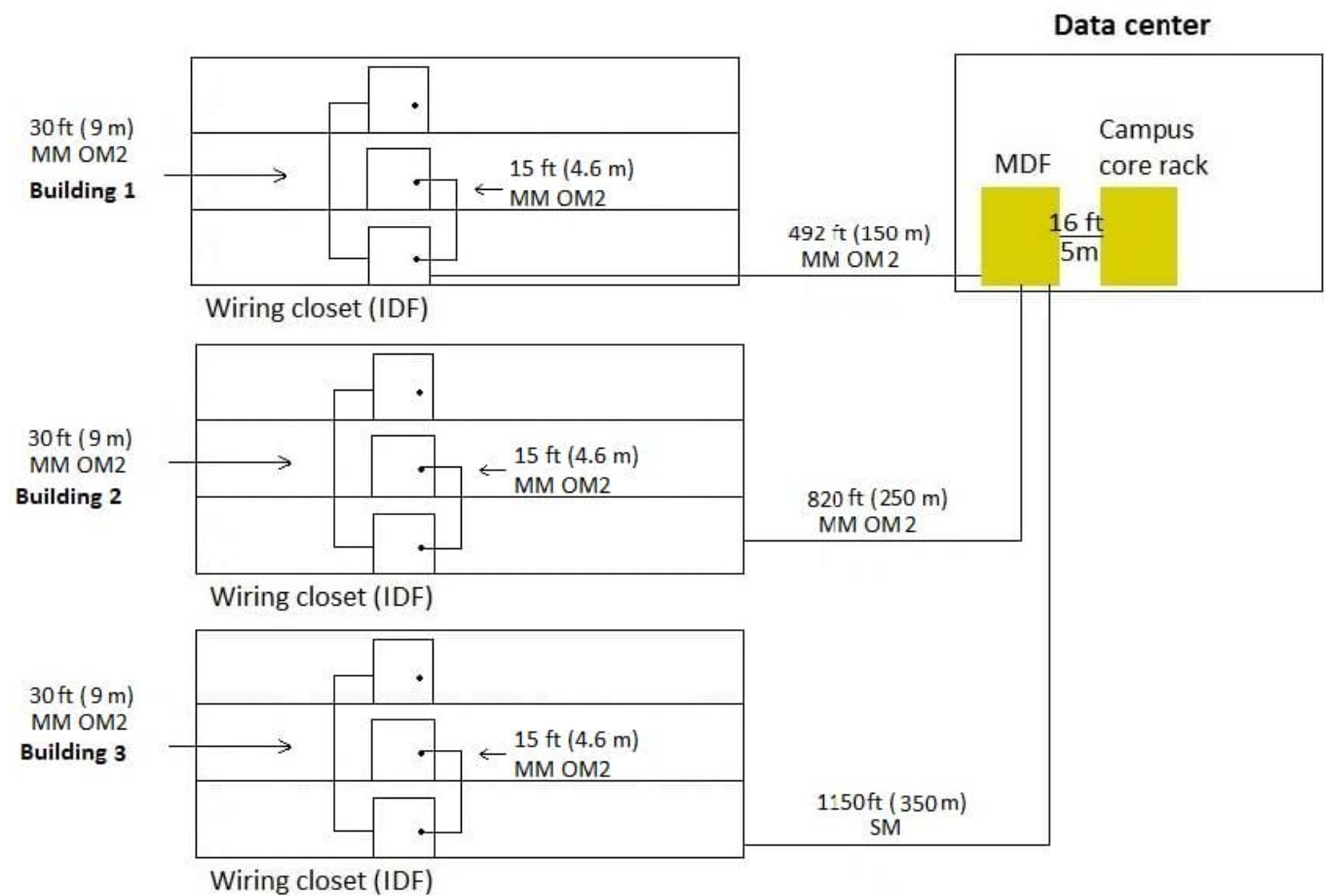
1GbE fiber uplinks

The existing aggregation switches support these features:

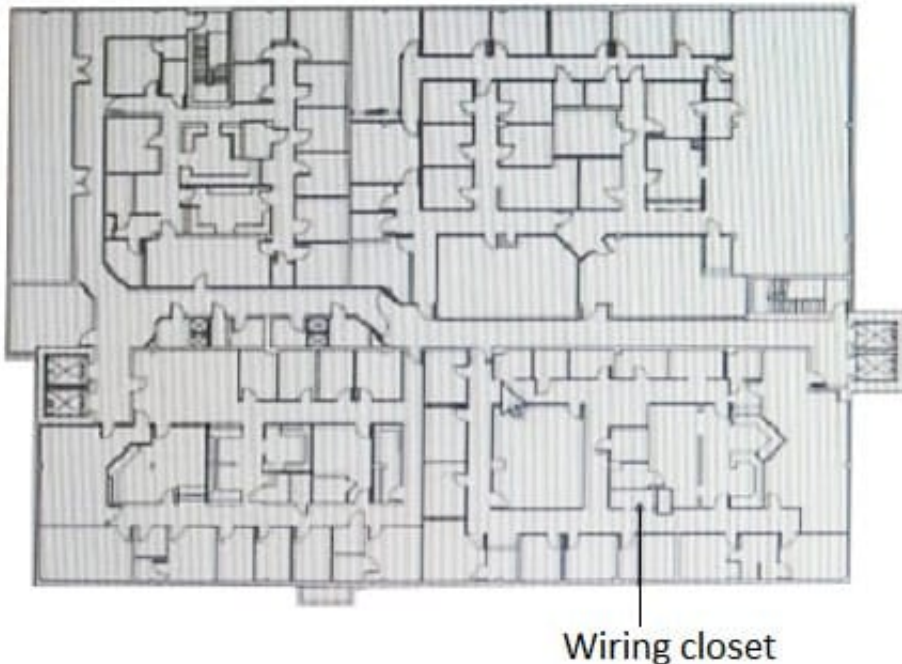
1/10GbE fiber ports

ARP tables up to 62,000

The customer has provided this figure that shows the existing cabling between floors and between buildings:



Each floor is about 100 feet (30 m) by 140 feet (43 m) with a 10 foot (3 m) ceiling. Interior walls are drywall. The layout for each floor is similar to that shown below. CAT5e cable is extended to all areas.



What is one piece of additional information architects should obtain from the customer before they design the wireless solution?

- A. whether the users sometimes connect their laptops with Ethernet
- B. whether the IoT devices support MAC-Auth
- C. the number of concurrently used wireless devices per user
- D. the power requirements for the security cameras

Correct Answer: C

QUESTION 3

Case study

A customer needs a wireless network upgrade for 802.11ac and possibly an upgrade to the wired network.

The customer requires dual-radio 802.11ac APs, each radio of which can support 4x4 MIMO at full feature set.

The customer has given architects this information about their wireless devices:

2700 IoT devices which will have only wireless connections; they support WPA2 with 802.1X

300 on each floor in 3 buildings with 3 floors each

5,400 users, who use devices such as laptops and smartphones

600 users on each floor in 3 buildings with 3 floors each



24 security cameras which will have only wireless connections; they support WPA2 with 802.1X and have a local power source

4 on floor 1 of each of the 3 buildings

2 on the other 6 floors

The architect also has collected information about the existing wired network.

The existing access layer switches support these features:

10/100/1000 edge ports

PoE (802.3af)

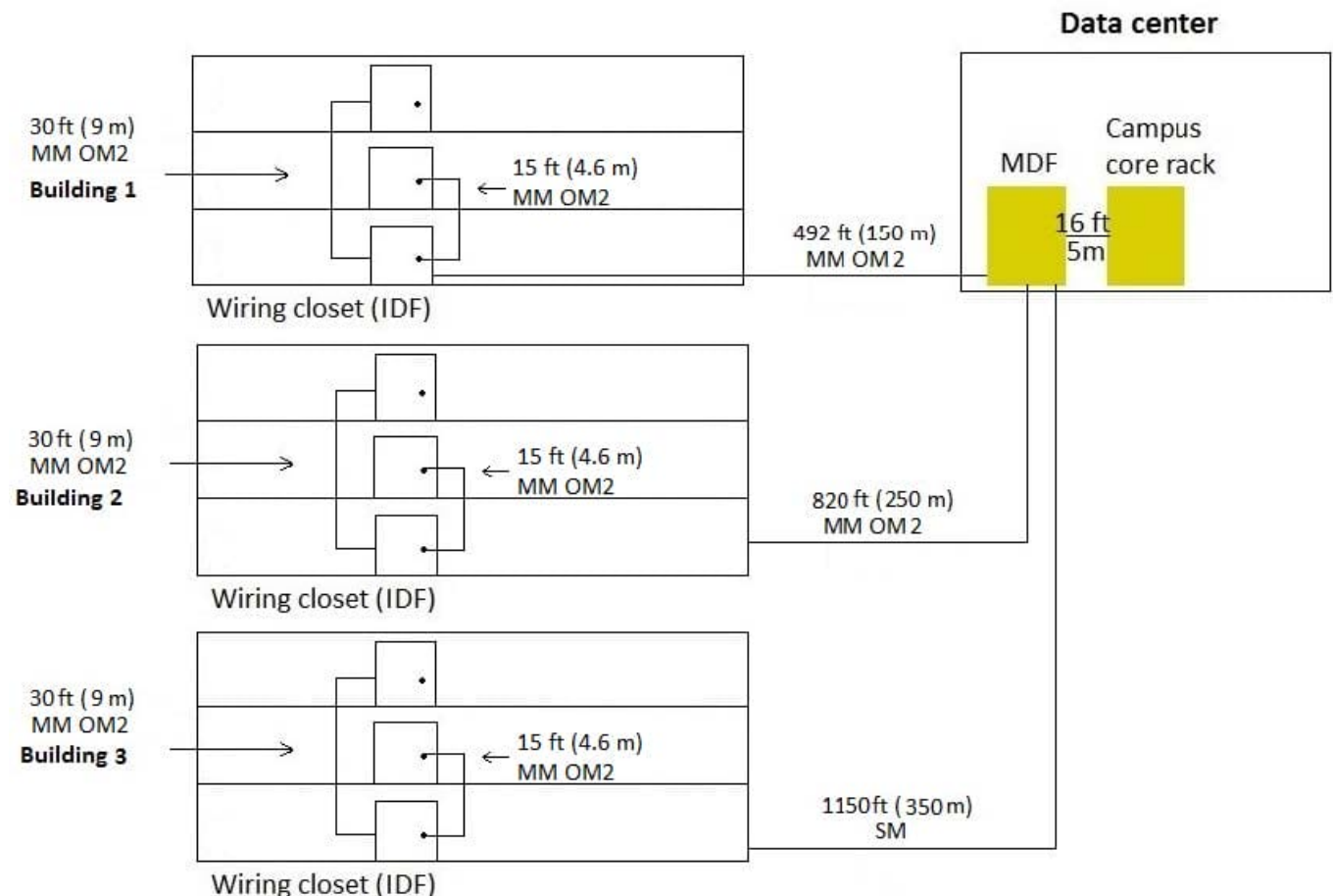
1GbE fiber uplinks

The existing aggregation switches support these features:

1/10GbE fiber ports

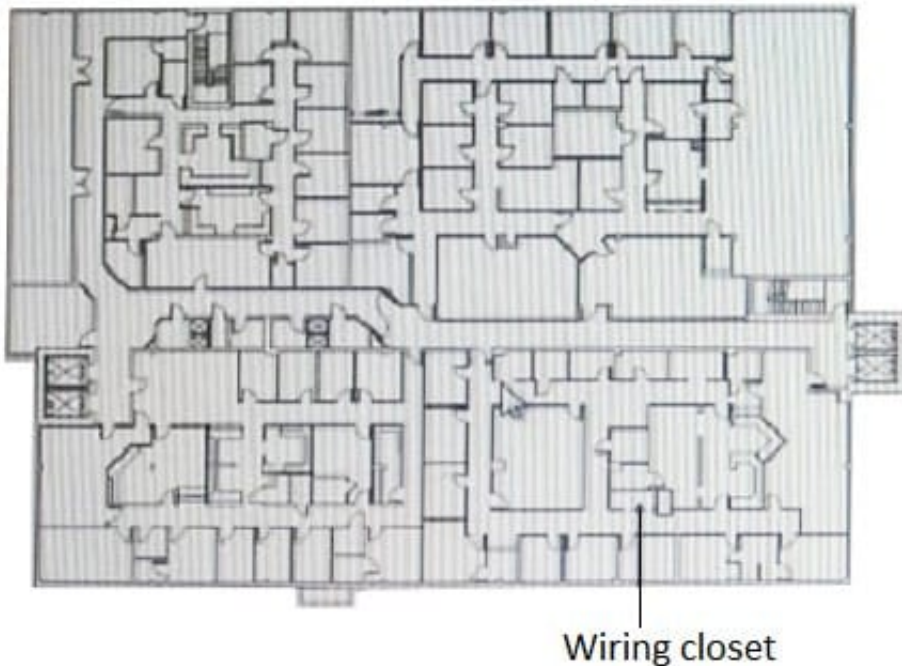
ARP tables up to 62,000

The customer has provided this figure that shows the existing cabling between floors and between buildings:





Each floor is about 100 feet (30 m) by 140 feet (43 m) with a 10 foot (3 m) ceiling. Interior walls are drywall. The layout for each floor is similar to that shown below. CAT5e cable is extended to all areas.



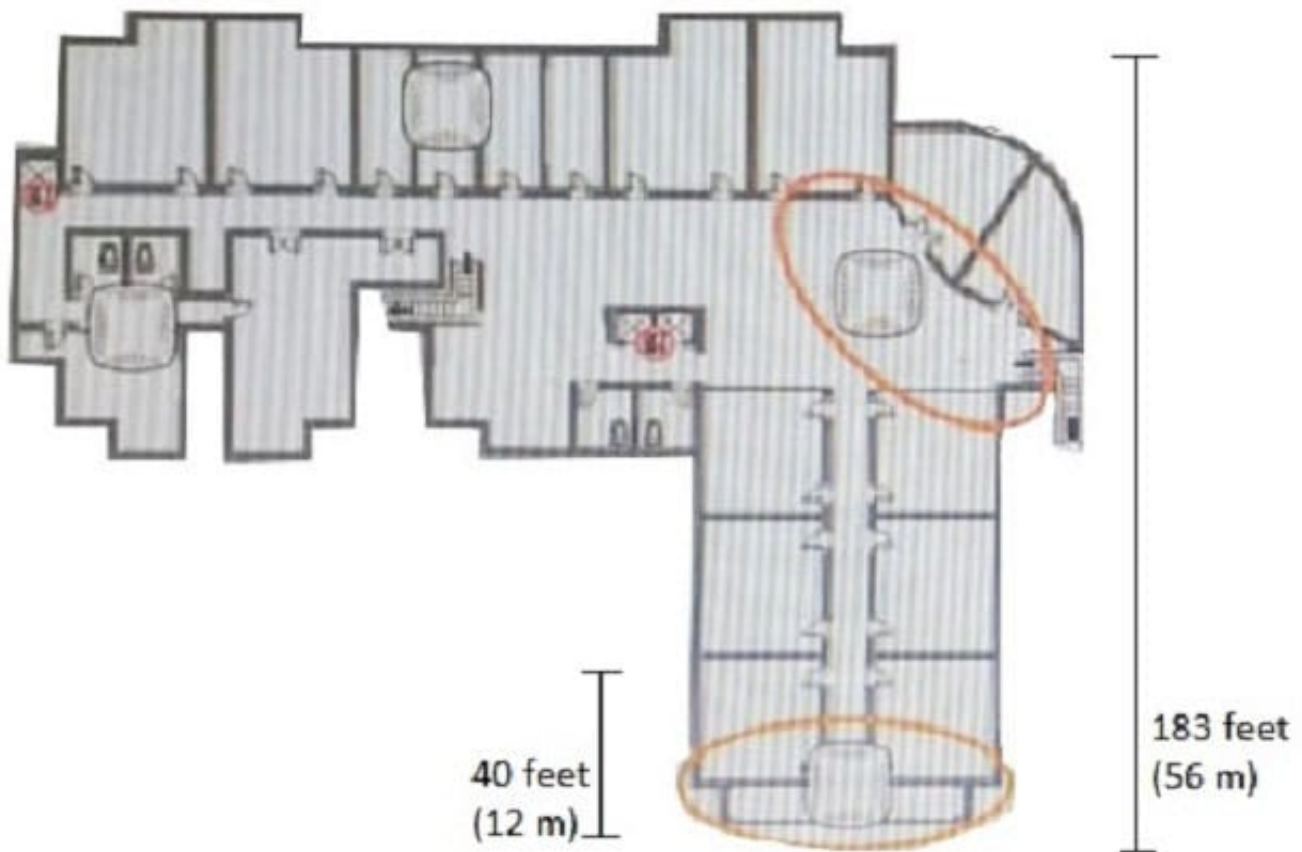
What is one change to the existing network that the architect should recommend to meet the new customer requirements?

- A. upgrade to at least CAT7 cable for all the wired drops
- B. upgrade to MM OM3 fiber between the floors
- C. new aggregation layer switches to support larger ARP tables
- D. new access layer switches to support PoE+

Correct Answer: B

QUESTION 4

Refer to the exhibit.



A casino and a retail space has an existing Aruba network with Aruba AP-335s. The customer wants to deploy Meridian and enable proximity-based campaigns. The exhibit shows a segment of the floor plan. When visitors enter the areas circled in the exhibit, they should receive a targeted notification about promotions and sales.

What should the architect explain to the customer about how to finish the solution?

- A. This solution will require about 6 battery-powered beacons, which can be managed by the APs.
- B. While these APs cannot act as beacons, they have a USB slot that accepts USB beacons.
- C. The customer can enable the built-in BLE capability in the AP-335 radio to meet these requirements.
- D. The customer must remember to purchase a Meridian Maps license with the Campaigns license.

Correct Answer: A

QUESTION 5

A customer has multiple medium and large branch sites, each of which requires between 8 and 16 APs and supports between 200 and 600 wireless clients. Every branch site has an internet connection, which it uses to reach the central data center. The customer would prefer the WAN links to be optimized in the solution. Each site handles between 1 and 2 Gbps of traffic, most of which goes to the central data center. The data center has 7210 controllers for terminating the



VPN connections.

Which branch office solution best meets the customer needs?

- A. CAPs and branch office controllers with an SD-WAN license
- B. IAPs and no branch office controllers
- C. CAPs and branch office controllers
- D. RAPs and no branch office controllers

Correct Answer: B

[Latest HPE6-A49 Dumps](#)

[HPE6-A49 Exam Questions](#)

[HPE6-A49 Braindumps](#)