



HPE6-A48^{Q&As}

Aruba Certified Mobility Expert 8 Written Exam

Pass HP HPE6-A48 Exam with 100% Guarantee

Free Download Real Questions & Answers **PDF** and **VCE** file from:

<https://www.passapply.com/hpe6-a48.html>

100% Passing Guarantee
100% Money Back Assurance

Following Questions and Answers are all new published by HP Official Exam Center

-  **Instant Download** After Purchase
-  **100% Money Back** Guarantee
-  **365 Days** Free Update
-  **800,000+** Satisfied Customers



**QUESTION 1**

A network administrator deploys AirWave over a Mobility Master (MM)-Mobility Controller (MC) network to monitor, audit, and report activities. The main areas of concern are with high user density, not enough APs, or not enough channel bandwidth.

Which two report options can the network administrator user to create a weekly report that shows networking equipment with more users and high-demand applications used by top talkers? (Select two.)

- A. Most Utilized Folders by Maximum Concurrent Clients
- B. Most Utilized by Usage
- C. Top Applications Summary
- D. Most Utilized by Maximum Concurrent Clients
- E. Top 3 Applications For Top 10 Users

Correct Answer: BD

QUESTION 2

A point venture between two companies results in a fully functional WLAN Aruba solution. The network administrator uses the following script to integrate the WLAN solution with two radius servers, radius1 and radius2.



```
aaa authentication-server radius radius1
  host 10.254.1.1
  key key111
!
aaa authentication-server radius radius2
  host 10.20.2.2
  key key222
!
aaa server-group group-corp
auth-server radius1

aaa profile aaa-corp
authentication-dot1x authenticated
dot1x-server-group group-corp
!
wlan ssid-profile ssid-corp
ssid corp
opmode wpa2-aes
!
wlan virtual-ap vap-corp
aaa-profile aaa-corp
ssid-profile ssid-corp
!
ap-group building1
virtual-ap vap-corp
```

While all users authenticate with username@doainname.com type of credentials, radius1 has user accounts without the domain name portion.

Which additional configuration is required to authenticate corp1.com users with radius1 and corp2 users with radius2?

- A. aaa authentication-server radius radius1 trim-fqdn ! aaa server-group-corp auth-server radius1 match-authstring corp1.com auth-server radius1 match-authstring corp2.com
- B. aaa server-group-corp auth-server radius1 match-fqdn corp1.com auth-server radius1 trim-fqdn auth-server radius2 match-fqdn corp2.com
- C. aaa authentication-server tadius radius1 ! aaa server-group-corp auth-server radius1 match-string corp1.com trim-fqdn auth-server radius1 match-string corp2.com
- D. aaa authentication-server radius radius1 trim-fqdn ! aaa server-group-corp auth-server radius1 match-domain corp1.com auth-server radius1 match-domain corp2.com

Correct Answer: B

QUESTION 3



A network administrator wants to receive a major alarm every time a controller or an Aruba switch goes down for either a local or an upstream device failure. Which alarm definition must the network administrator create to accomplish this?



A.

Trigger

Type: **Device Down** ▼

Severity: **Major** ▼

Limit by number of down events: Yes No

Send Alerts for Thin APs when Controller is Down: Yes No

Send Alerts when Upstream Device is Down: Yes No

Send Alerts on Reboot:
Include reboots detected by uptime reset or reboot count increase Yes No

Conditions

Matching conditions: All Any

Add New Trigger Condition

OPTION	CONDITION	VALUE
Device Type ▼	is ▼	Controller ▼
Device Type ▼	is ▼	Router/Switch ▼

B.

Trigger

Type: **Device Down** ▼

Severity: **Major** ▼

Limit by number of down events: Yes No

Send Alerts for Thin APs when Controller is Down: Yes No

Send Alerts when Upstream Device is Down: Yes No

Send Alerts on Reboot:
Include reboots detected by uptime reset or reboot count increase Yes No

Conditions

Matching conditions: All Any

Add New Trigger Condition

OPTION	CONDITION	VALUE
Device Type ▼	is ▼	Controller ▼
Device Type ▼	is ▼	Router/Switch ▼



C. 

OPTION	CONDITION	VALUE
Device Type	is	Controller
Device Type	is	Universal Network

- A. Option A
- B. Option B
- C. Option C

Correct Answer: B

QUESTION 4

Refer to the exhibits.

Exhibit 1



CONTROLLERS | **ACCESS POINTS** | **CLIENTS** | **ALERTS**
✔️ 1 | ⚠️ 1 | ✔️ 2 | ⚠️ 0 | 📶 1 📶 0 | ⚠️ 0

> **MC14-1**

Name:	MC14-1
Reachability:	Unreachable
Health:	Good
Uptime:	-
Model:	Aruba7030-US
Serial Number:	CRDD12919
Country:	-
Group:	md > Westcoast > SantaClara > Building1
Configuration State:	-
Configuration Version:	-

(A48.01114452)

Exhibit 2 A network administrator adds a new Mobility Controller (MC) to the production Mobility Master (MM) and deploys APs that start broadcasting the employees SSID in the West wing of the building. Suddenly, the employed report client disconnects. When accessing the MM the network administrator notices that the MC is unreachable, then proceeds to access the MC's console and obtains the outputs shown in the exhibits.



```
top2 – 22:23:48 up 6:11, 0 users, load average: 0.11, 0.10, 0.08
Tasks: 202 total, 2 running, 198 sleeping, 0 stopped, 2 zombie
Cpu(s): 1.2%us, 2.9%sy, 0.2%ni, 95.6%id, 0.1wa, 0.0%hi, 0.1%si, 0.0%st
Mem: 3085600k total, 1831312k used, 1254288k free, 19488k buffers
Swap: 1048544k total, 0k used, 1048544k free, 889680k cached
```

PID	USER	PR	NI	VIRT	RES	SHR	S	%CPU	%MEM	TIME+	COMMAND
3556	root	20	0	147m	79m	15m	R	85	2.7	0:39.54	profmgr
3017	root	20	0	9472	3952	2656	S	23	0.1	1:30.44	syslogd
3565	root	10	-10	132m	36m	13m	S	15	1.2	0:37.09	auth
4007	root	20	0	68208	8896	5920	S	10	0.3	0:23.41	ofa
3497	root	20	0	334m	137m	10m	S	6	4.6	11:31.80	fpapps
3894	root	20	0	124m	23m	5472	S	6	0.8	0:10.00	dds
4125	root	20	0	52640	6496	3296	S	6	0.2	0:28.97	vrrp
13	root	20	0	0	0	0	S	4	0.0	0:02.05	events/1
3583	root	20	0	173m	25m	9696	S	4	0.8	1:47.79	stm
12505	root	20	0	3104	1680	1248	R	4	0.1	0:00.03	top2
3511	root	20	0	51088	6288	3712	S	2	0.2	0:04.90	pim
3807	root	20	0	220m	71m	5568	S	2	2.4	0:18.20	fw_visibility
1	root	20	0	4160	1104	912	S	0	0.0	0:03.13	init
2	root	20	0	0	0	0	S	0	0.0	0:00.00	kthreadd

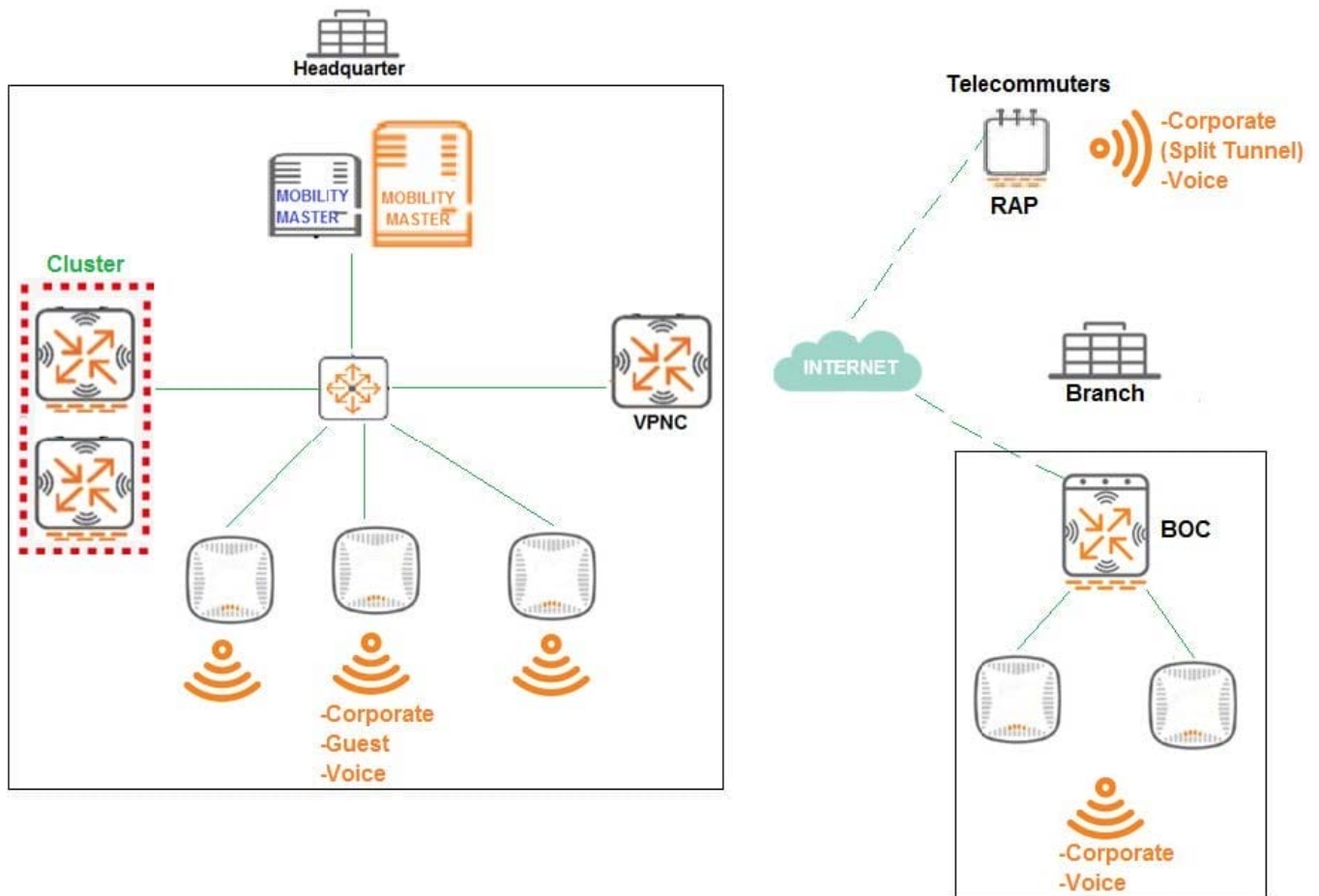
What should the network administrator do next to solve the current problem?

- A. Decommission the MC from the MM, and add it again.
- B. Open a TAC case, and send the output of tar crash.
- C. Verify the license pools in the MM.
- D. Kill two zombie processes, then reboot the MC.

Correct Answer: D

QUESTION 5

Refer to exhibit.



A company has a multiple Aruba implementation with three different locations named Headquarter, Branch, and Telecommuters.

The network design includes the following:

Headquarter APs terminate at the Mobility Controller (MC) cluster and propagate Corporate, Guest, and Voice SSIDs

Branch APs terminate at the Branch Office Controller (BOC) and propagate Corporate and Voice SSIDs

BOC reaches the Mobility Master (MM) through a VPNC.

Telecommuter RAPs terminate at VPNC and propagate Corporate and Voice SSIDs.

The Corporate SSID on the RAPs is split-tunnel, all other SSIDs are tunnel.

The network design requires minimal AP group and VAP configuration effort, while preventing unnecessary VAP propagation to lower hierarchy levels.

Following Aruba node hierarchy design recommendations, which group hierarchy design helps meet these requirements?



A. /md /md/Corp1/ /md/Corp1/Offices /md/Corp1/Offices/Headquarter /md/Corp1/Offices/Branch /md/Corp1/Telecommuters /mm /mm/mynode

B. /md /md/Headquarter /md/Branch /md/Telecommuters /mm /mm/mynode

C. /mm /md/Locations /md/Locations/Headquarter /md/Locations/Branch /md/Locations/Telecommuters /mm /mm/mynode

D. /md /md/Location1/ /md/Location1/Branch /mdLocation1/Offices /md/Location1/Offices/Headquarter /md/Location1/Telecommuters /mm /mm/mynode

Correct Answer: D

[Latest HPE6-A48 Dumps](#)

[HPE6-A48 Practice Test](#)

[HPE6-A48 Exam Questions](#)