



HPE6-A45^{Q&As}

Implementing Aruba Campus Switching solutions

Pass HP HPE6-A45 Exam with 100% Guarantee

Free Download Real Questions & Answers **PDF** and **VCE** file from:

<https://www.passapply.com/hpe6-a45.html>

100% Passing Guarantee
100% Money Back Assurance

Following Questions and Answers are all new published by HP Official Exam Center

-  **Instant Download** After Purchase
-  **100% Money Back** Guarantee
-  **365 Days** Free Update
-  **800,000+** Satisfied Customers





QUESTION 1

Refer to the exhibits.

Exhibit 1

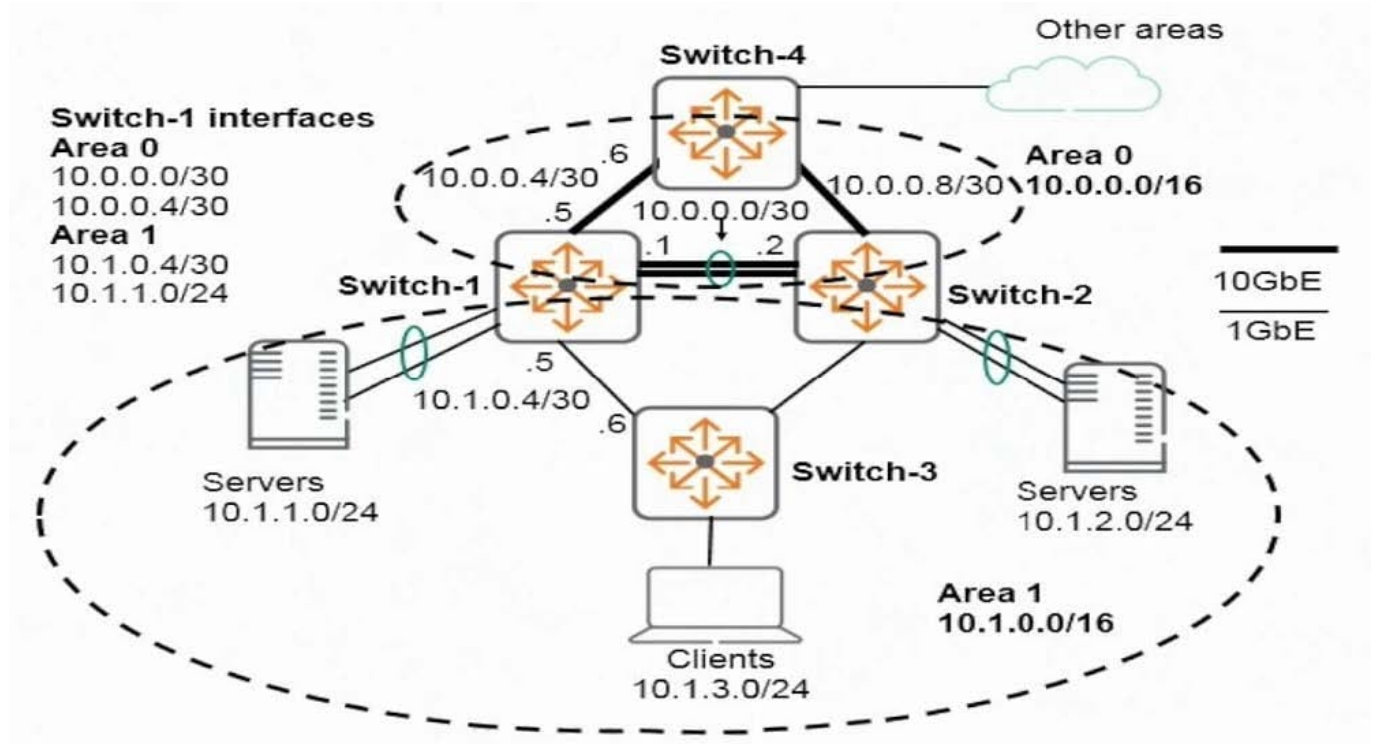


Exhibit 2



```
Switch-1# show ip route
```

```
IP Route Entries
```

Destination	Gateway	VLAN	Type	Sub-Type	Metric	Dist.
10.0.0.0/30	VLAN1000	1000	connected		5	0
10.0.0.4/30	VLAN1004	1004	connected		10	0
10.0.0.8/30	10.0.0.2	1000	ospf	IntraArea	15	
110						
10.1.0.4/30	VLAN104	104	connected		100	0
10.1.0.8/30	10.1.0.6	104	ospf	IntraArea	200	
110						
10.1.0.8/30	10.1.0.6	104	ospf	IntraArea	200	110
10.1.1.0/24	VLAN110	110	connected		50	0
10.1.2.0/24	10.1.0.6	104	ospf	IntraArea	250	110
10.1.3.0/24	10.1.0.6	104	ospf	IntraArea	200	110
10.2.0.0/16	10.0.0.6	1004	ospf	InterArea	110	110
10.3.0.0/16	10.0.0.6	1004	ospf	InterArea	110	110
127.0.0.0/8	reject		static		0	0
127.0.0.1/32	lo0		connected		1	0

```
Switch-1# show ip ospf neighbor
```

```
OSPF Neighbor Information
```

Router ID	Pri	IP Address	NbIfState	State	QLen	Events	Status
2.2.2.2	1	10.0.0.2	BDR	FULL	0	6	None
3.3.3.3	1	10.1.0.6	BDR	FULL	0	6	None
4.4.4.4	1	10.0.0.6	BDR	FULL	0	6	None

Traffic between servers in Area 1 takes a sub-optimal path rather than the link dedicated to VLAN 1000, subnet 10.0.0.0/30. Based on the exhibits, what can administrators do to create a better path for this traffic?

- A. Decrease the OSPF cost on the VLAN 1000 interface on Switch-1 and Switch-2.
- B. Add a virtual OSPF link between Switch-1 and Switch-2.
- C. Add a VLAN in OSPF Area 1 on the link between Switch-1 and Switch-2.
- D. Make sure that OSPF is enabled in Area 0 on VLAN 1000 on both Switch-1 and Switch-2.

Correct Answer: C

QUESTION 2

A customer wants to authenticate AOS-Switch managers to a RADIUS server. The CIO wants to assign different rights to different management users for granular control over their rights and privileges.

What must the network administrator enable on the AOS-Switches to ensure they comply with this plan?

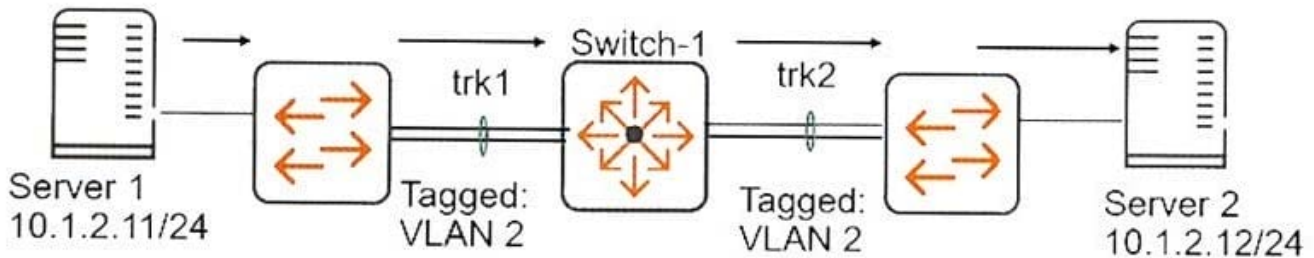
- A. RADIUS-based command authorization
- B. a manager and operator password
- C. authentication login privileges
- D. SNMPv3 and SNMPv3 restricted access.



Correct Answer: C

QUESTION 3

Refer to the exhibit.



Switch-1 is an AOS-switch that is operating at factory default settings for QoS and has type of service disabled. It receives a frame with 802.1p value 5 on trk1, on VLAN 2.

How does the switch treat the frame when it forwards it on TRK2?

- A. It forwards it with higher than normal priority and 802.1p 0.
- B. It forwards it with normal priority and 802.1p 0.
- C. It forwards it with normal priority and 802.1p 5
- D. It forwards it with higher than normal priority and 802.1p 5.

Correct Answer: B

QUESTION 4

A company needs to update the software on a VSF fabric with two Aruba 540GR switches.

What can the network administrator do to minimize downtime during the update?

- A. Ensure that both switches have redundant management modules
- B. Deploy the new software with the enhanced PAPI feature
- C. Upload the new software through the OOBM ports
- D. Implement a sequenced reboot of the new software

Correct Answer: D

**QUESTION 5**

Refer to the exhibit.

```
Switch-1# show link-keepalive
Status and Configuration - UniDirectional Link Detection (UDLD)

Keepalive Retries      : 4
Keepalive Interval     : 5000 ms
Keepalive Mode         : forward-then-verify

Port   Enabled   Physical      Keepalive Adjacent   UDLD
-----
A23    Yes       up           failure    00fd45-653ae9  untagged
```

Switch-1 and Switch-2 connect on interface A23. The switches experience a connectivity issue. The network administrator sees that both switches show this interface as up. The administrator sees the output shown in the exhibit on Switch-1.

What is a typical issue that could cause this output?

- A. asymmetric routing introduced by a routing protocol
- B. an issue with VLAN mismatch
- C. mismatched subnet mask on the VLAN for the link
- D. a jumbo frame mismatch

Correct Answer: A

[HPE6-A45 Study Guide](#)

[HPE6-A45 Exam Questions](#)

[HPE6-A45 Braindumps](#)