



HPE6-A29^{Q&As}

Aruba Certified Mobility Professional 6.4

Pass HP HPE6-A29 Exam with 100% Guarantee

Free Download Real Questions & Answers **PDF** and **VCE** file from:

<https://www.passapply.com/hpe6-a29.html>

100% Passing Guarantee
100% Money Back Assurance

Following Questions and Answers are all new published by HP Official Exam Center

-  **Instant Download** After Purchase
-  **100% Money Back** Guarantee
-  **365 Days** Free Update
-  **800,000+** Satisfied Customers





QUESTION 1

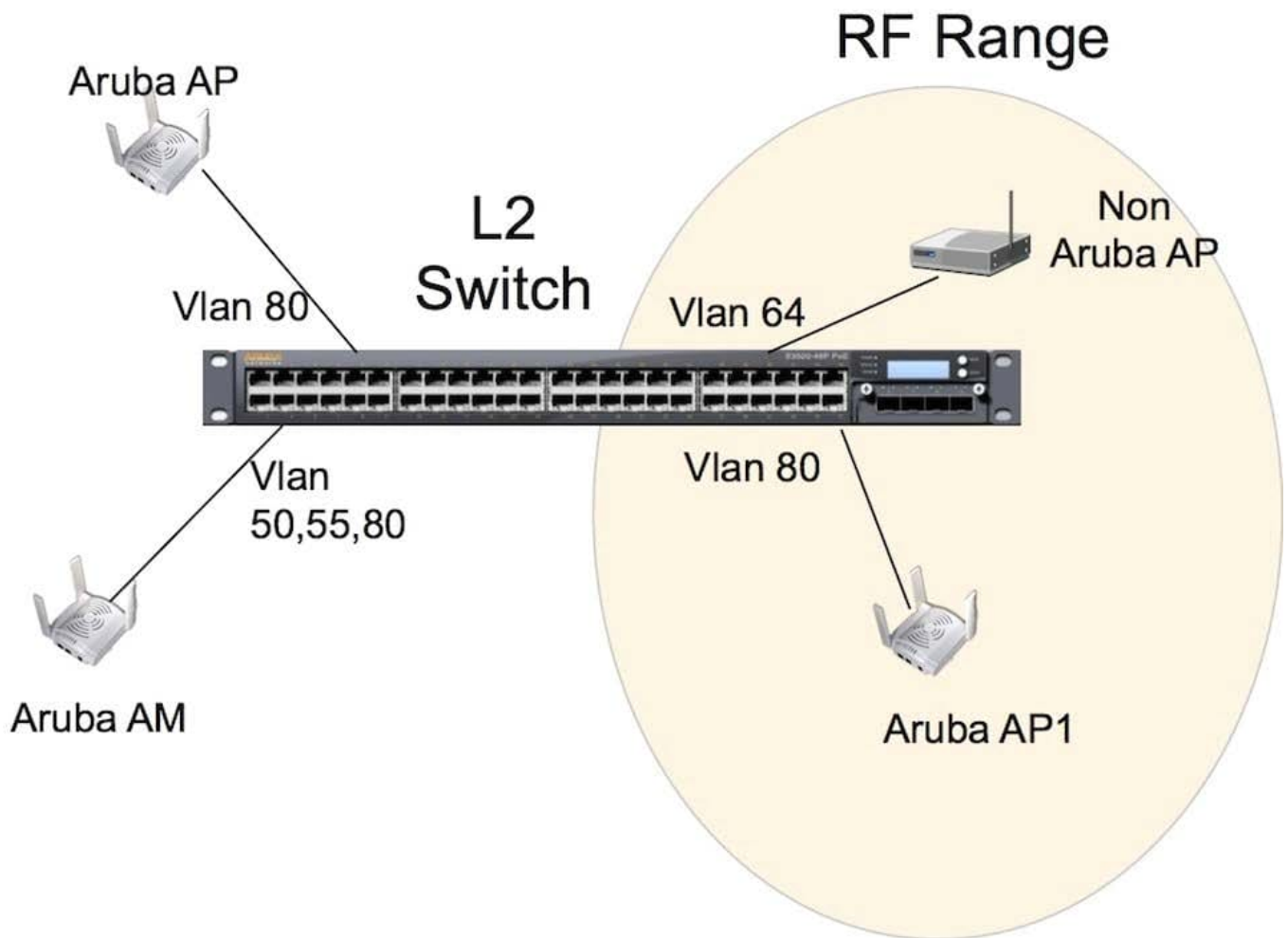
Which of the statements below are TRUE regarding ARM's Spectrum Load Balancing feature? (Choose two)

- A. Available only on 5GHz radios
- B. Disabled by default
- C. Balances client load across available channels/APs
- D. Enabled by default
- E. Available only on 2.4GHz radios

Correct Answer: BC

QUESTION 2

Exhibit: Referring to the diagram provided for this question, an employee brought an unauthorized AP from home and attached it to the cubicle Ethernet port as shown in the diagram. The APs are in VLANs as shown in the diagram. Only AP1 is within RF range.



How will the Aruba controller classify this AP?

- A. an AP
- B. an AM
- C. a Rogue AP
- D. an Interfering AP
- E. a workstation

Correct Answer: D

QUESTION 3

An administrator deploys a Remote AP (RAP) at a branch office. The RAP connects back to an Aruba Mobility Controller at the corporate office from across the internet. The controller provisions the RAP in the AP Group named branch office RAPs. This AP Group supports one Virtual AP (VAP) for employees and one VAP for guests. Guest traffic should be sent directly to the internet from the branch office.

All employees traffic should be forwarded to the corporate controller where it can be examined by the controller's



firewall policies.

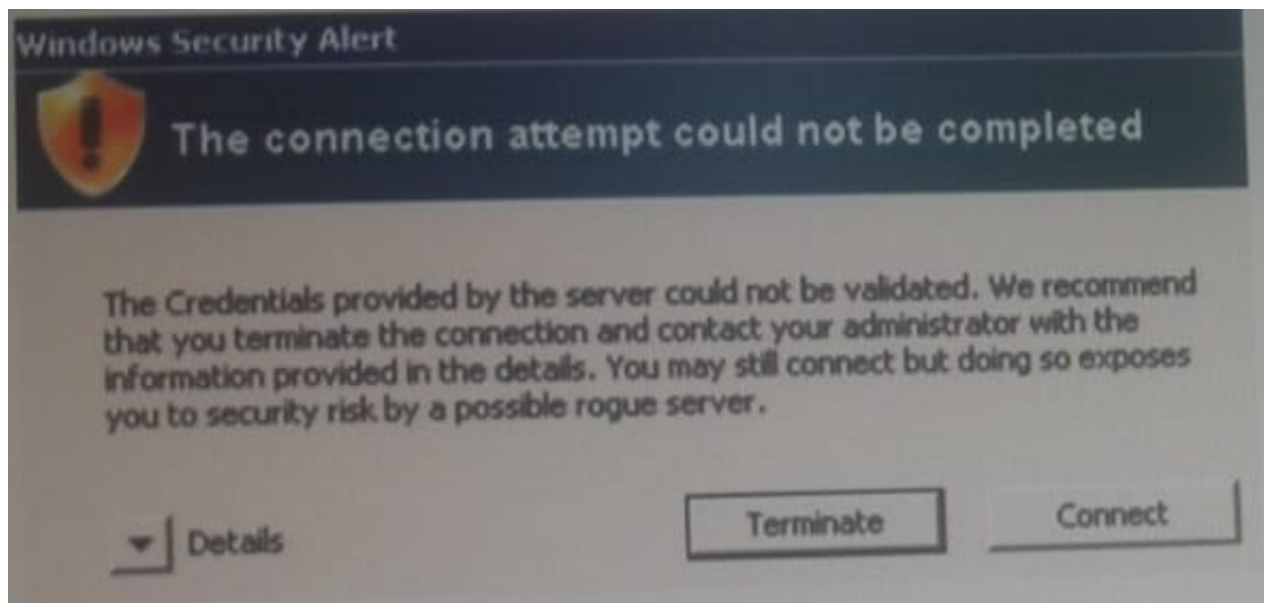
Which operating modes should the administrator use for the two VAPs?

- A. employee split-tunnel, guest bridge.
- B. employee split-tunnel guest split-tunnel
- C. employee tunnel guest bridge
- D. employee tunnel guest split-tunnel

Correct Answer: C

QUESTION 4

An administrator implements a WLAN virtual AP (VAP) to authenticate employee access on Aruba Mobility Controller in a master-local topology. However, when testing wireless access from a Windows client the administrator sees the pop-up window show in the exhibit:



What should the administrator do to solve this problem?

- A. Add a client certificate from the same CA used to obtain the controller's certificate on the Windows client.
- B. Add the root certificate for the corresponding controller identity certificate on the windows client.
- C. Configure the client's certificate as a trusted certificate on the Windows client.
- D. Define the controller's certificate as a trusted certificate on the windows client.

Correct Answer: A

QUESTION 5



An administrator works in an environment in which the following has occurred.

*

A port firewall policy is applied to a trunk port which denies controller access

*

An Allow All VLAN firewall policy is applied to VLAN 33 on the same trunk port.

*

A user connected to VLAN 33 on the trunk port is trying to gain access to the controller. What is true about the controller accessibility in this scenario?

A.

The controller will be inaccessible since the VLAN policy is applied as well as the port policy.

B.

The controller will be accessible since the VLAN policy is applied.

C.

The controller will be inaccessible since the port policy is applied.

D.

The controller will be inaccessible since administrators cannot place a firewall policy on a port VLAN when the port already has a policy.

Correct Answer: A

[HPE6-A29 PDF Dumps](#)

[HPE6-A29 Practice Test](#)

[HPE6-A29 Braindumps](#)