



HPE0-S58^{Q&As}

Implementing HPE Composable Infrastructure Solutions

Pass HP HPE0-S58 Exam with 100% Guarantee

Free Download Real Questions & Answers **PDF** and **VCE** file from:

<https://www.passapply.com/hpe0-s58.html>

100% Passing Guarantee
100% Money Back Assurance

Following Questions and Answers are all new published by HP Official Exam Center

-  **Instant Download** After Purchase
-  **100% Money Back** Guarantee
-  **365 Days** Free Update
-  **800,000+** Satisfied Customers





QUESTION 1

An integrator is performing an initial Synergy setup.

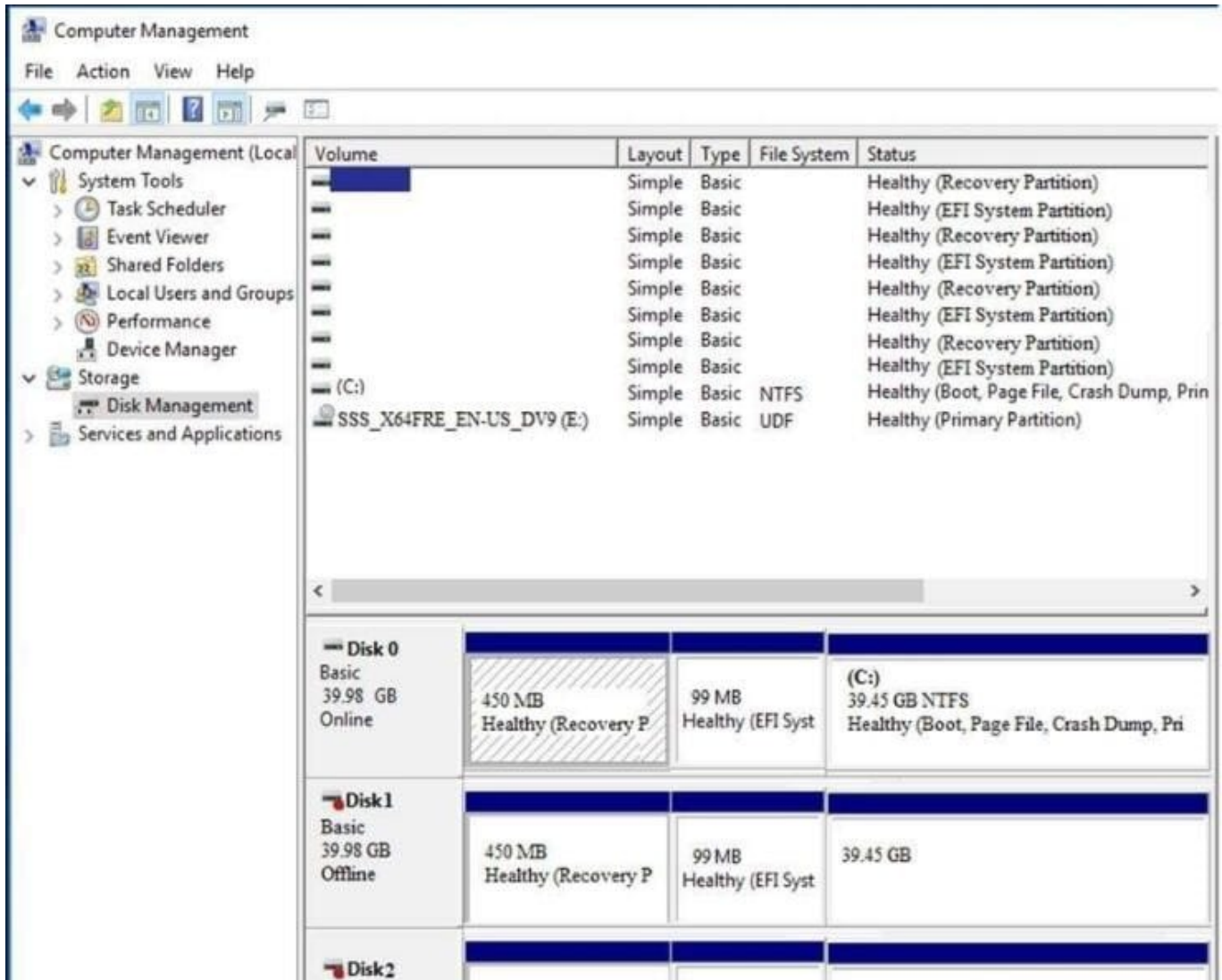
How should the integrator initiate the hardware discovery?

- A. Connect a Serial cable to the front panel, and open a session to the console
- B. Plug in the SUVi cable for the blade server, and attach a monitor
- C. Open a browser, and select Discover in the HPE Synergy Console
- D. Attach a display and a keyboard to the front panel, and click connect

Correct Answer: D

Reference: https://support.hpe.com/hpesc/public/docDisplay?docId=emr_na-a00019536en_us

QUESTION 2



A customer connected a logical drive from 3PAR StoreServ array to the Windows Server 2016 as a data drive.

The customer complains that in the Disk Manager, they can see the same volume four times.

What can an integrator do to fix this issue?

- A. Delete any three logical drives and leave one of them
- B. Go to the SSMC and enable multipathing option for this volume
- C. Create an NTFS partition on any logical drive to consolidate the logical drives
- D. Install an MPIO component to hide redundant paths to the volume

Correct Answer: B

QUESTION 3

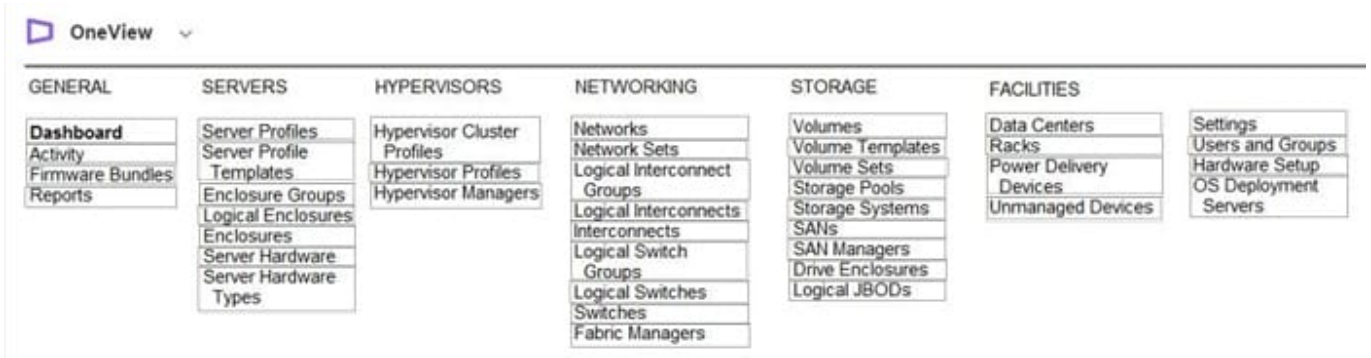
HOTSPOT



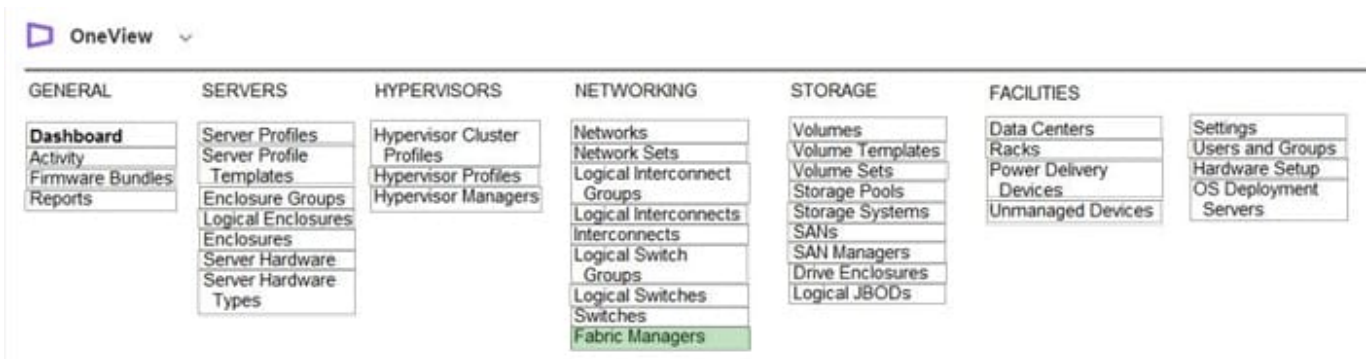
A customer has the following HPE Synergy solution: three Synergy frames two HPE Virtual Connect SE 32Gb Fibre Channel (FC) modules in each time two HPE Virtual Connect SE 40GB F8 modules four HPE Synergy 10Gb Interconnect Link Modules

Click the menu option the integrator should use to add more uplinks ports from HPE Virtual Connect SE 32 Gb FC modules to SAN uplink set.

Hot Area:



Correct Answer:



Reference: <https://h20195.www2.hpe.com/v2/GetPDF.aspx/c04815258.pdf>

QUESTION 4

HOTSPOT

An integrator needs to re-deploy a specific firmware component to one of the Synergy compute nodes.

Click on the option that will allow an integrator to rewrite existing firmware components with the same option.

Hot Area:



Firmware

Firmware baseline

Force installation

Consistency checking

Installation Method

Firmware and OS Drivers using Smart Update Tools

Firmware only using Smart Update Tools

Firmware only

Activate firmware Immediately At a scheduled date and time Not scheduled

Correct Answer:

Firmware

Firmware baseline

Force installation

Consistency checking

Installation Method

Firmware and OS Drivers using Smart Update Tools

Firmware only using Smart Update Tools

Firmware only

Activate firmware Immediately At a scheduled date and time Not scheduled

QUESTION 5

Using a laptop, how can an integrator perform the initial setup on an HPE Synergy 12000 Frame?

- A. Connect a CAT5 cable to the MGMT port of the top Frame Link Module, and connect to the HPE Synergy console with VNC to the address 306.025 port 5900.
- B. Connect a CAT5 cable to the front panel module, use the HPE Synergy default IP address of 192.168.10.1, port 5900, and connect to the HPE Synergy console with a web browser.
- C. Connect a CAT5 cable to the MGMT port of the top Frame Link Module, and connect to the HPE Synergy console



with a web browser to the address 192.168.10.1, port 5900.

D. Connect a CAT5 cable to the front panel module, use the HPE Synergy default IP address of 192.168.10.1, port 5900, and connect to the HPE Synergy console with VNC.

Correct Answer: D

Reference: https://h20628.www2.hp.com/km-ext/kmcsdirect/emr_na-c05348240-6.pdf (88, 89)

[Latest HPE0-S58 Dumps](#)

[HPE0-S58 Practice Test](#)

[HPE0-S58 Study Guide](#)