



HPE0-J50^{Q&As}

Integrating Protected HPE Storage Solutions

Pass HP HPE0-J50 Exam with 100% Guarantee

Free Download Real Questions & Answers **PDF** and **VCE** file from:

<https://www.passapply.com/hpe0-j50.html>

100% Passing Guarantee
100% Money Back Assurance

Following Questions and Answers are all new published by HP Official Exam Center

-  **Instant Download** After Purchase
-  **100% Money Back** Guarantee
-  **365 Days** Free Update
-  **800,000+** Satisfied Customers





QUESTION 1

Refer to the exhibit.

```
BB2 cli> cpg show | grep ^R5
```

Id	Name	Warn%	-Volumes-		-Usage-		- Upr -		- Snp -		- Adm -	
			UUs	TPUUs	Upr	Snp	Total	Used	Total	Used	Total	Used
0	G7_FC_R1	-	0	0	0	0	0	0	0	0	0	0
1	G7_SSD_R1	-	0	0	0	0	0	0	0	0	0	0
2	G7_FC_RS	-	0	0	0	0	0	0	0	0	0	0
3	G9_FC_RS	-	0	0	0	0	0	0	0	0	0	0
4	G1_RAIDS_FC	-	1	1	1	1	512	512	32512	512	8192	128
8	G2_Basic_lab_Virtual_Cop_NL	-	0	0	0	0	0	0	0	0	0	0
6 total					1	1	512	512	32512	512	8192	128

A storage integrator is examining the configuration of an HPE 3PAR storage system using CLI. Which command can be used to display a list of common provisioning groups starting with substring R5 in the system?

- A. showcpg R5*
- B. cpg show | grep ^R5
- C. cpg | grep R5*
- D. cmore showcpg -l R5*

Correct Answer: A

Reference: <https://support.hpe.com/hpsc/doc/public/display?docId=c04204279>

QUESTION 2

A customer finds that the performance of their application is not optimal. The customer's application stores data on an HPE 3PAR StoreServ Array to a volume within an FC tier. How should the storage integrator move the application data to a volume within an SSD tier?

- A. Backup the data, delete the FC volume, create a new SSD volume, and restore the data to it.
- B. Use the Dynamic Optimization feature in the HPE 3PAR StoreServ Management Console.
- C. Use the System Reporter feature in the HPE 3PAR StoreServ Management Console.
- D. Create an SSD volume, use the server OS to copy the data to the new volume, and delete the FC volume.

Correct Answer: D

QUESTION 3

Refer to the exhibit.



```

13:28:27 02/28/2015 r/w I/O per second KBytes per sec Set no IOPS MB
lan 0 G1_100_FC_R5 BB2UM_1 030 030 1 1 1 4 4 4 0.30 0.30 4.1 4.1 0
0 G1_100_FC_R5 BB2UH_1 030 030 1 1 1 4 4 4 0.37 0.37 4.1 4.1 0
-----
2 e 2 2 2 8 8 0.34 0.34 4.1 4.1 0
Press the enter key to stop...

13:28:29 02/28/2015 r/w I/O per second KBytes per sec Set no IOPS MB
lan 0 G1_100_FC_R5 BB2UM_1 030 030 5 5 5 376 188 376 0.70 0.64 68.9 58.0 0
0 G1_100_FC_R5 BB2UH_1 030 030 5 5 5 238 121 238 0.54 0.56 43.6 37.5 0
-----
2 e 11 6 613 309 0.65 0.60 56.2 48.2 0
Press the enter key to stop...

RR2 elix _

```

A customer is complaining about slow performance for their HPE 3PAR StoreServ system.

Which CLI command can be used by the storage administrator to display the queue length of a VLUN attached to the server during the troubleshooting process?

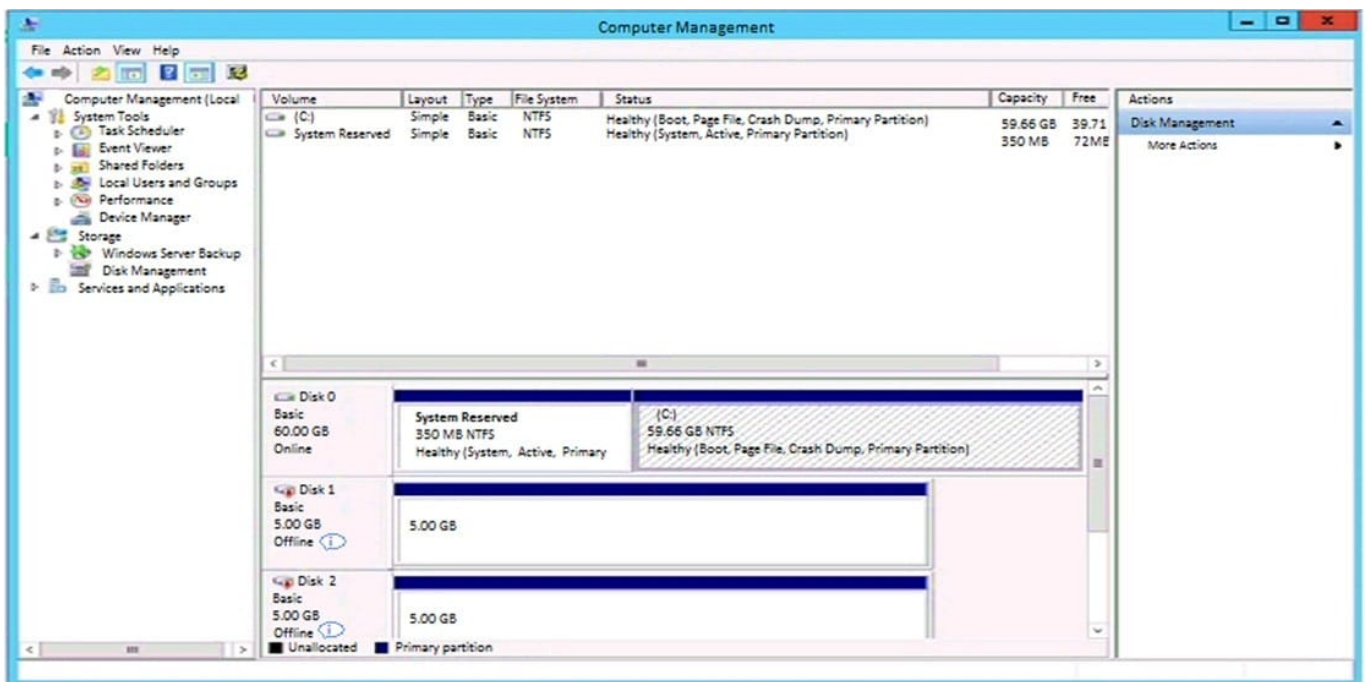
- A. perfvlns
- B. statvirtvolmapping
- C. show mappingsvirtvol
- D. srstatvln

Correct Answer: D

Reference: <https://support.hpe.com/hpsc/doc/public/display?docId=c04204279> (689)

QUESTION 4

Refer to the exhibit.



The administrator has presented an HPE 3PAR StoreServer virtual volume to a server. A single virtual volume is seen



as two different offline disks on a Windows 2012 R2 server. What must be done to correct the issue?

- A. Install HPE 3PAR DSM MPIO and reboot the server.
- B. Install the latest HBA driver and reboot the server.
- C. Install the MPIO feature and reboot the server.
- D. Install 3PAR host explorer and start service.

Correct Answer: A

Reference: <https://assets.ext.hpe.com/is/content/hpedam/documents/4aa5-5000-5999/4aa5-5894/4aa5-5894enw.pdf>
(21)

QUESTION 5

Which management interface or tool primarily offers remote support capabilities for an HPE 3PAR StoreServ storage system?

- A. HPE 3PAR Service Processor
- B. HPE 3PAR Direct Connect
- C. HPE Insight Remote Support
- D. HPE Insight Online 3PAR

Correct Answer: C

Reference: https://www.hpe.com/emea_europe/en/services/get-connected.html

[Latest HPE0-J50 Dumps](#)

[HPE0-J50 PDF Dumps](#)

[HPE0-J50 VCE Dumps](#)