



HP2-Z37^{Q&As}

Fast Track - Applying HP FlexNetwork Fundamentals

Pass HP HP2-Z37 Exam with 100% Guarantee

Free Download Real Questions & Answers **PDF** and **VCE** file from:

<https://www.passapply.com/hp2-z37.html>

100% Passing Guarantee
100% Money Back Assurance

Following Questions and Answers are all new published by HP Official Exam Center

- ⚙️ **Instant Download** After Purchase
- ⚙️ **100% Money Back** Guarantee
- ⚙️ **365 Days** Free Update
- ⚙️ **800,000+** Satisfied Customers





QUESTION 1

Refer to the exhibit.

```
<Comware> display port trunk
```

Interface	PVID	VLAN passing
GE1/0/1 1	1	1, 10, 20

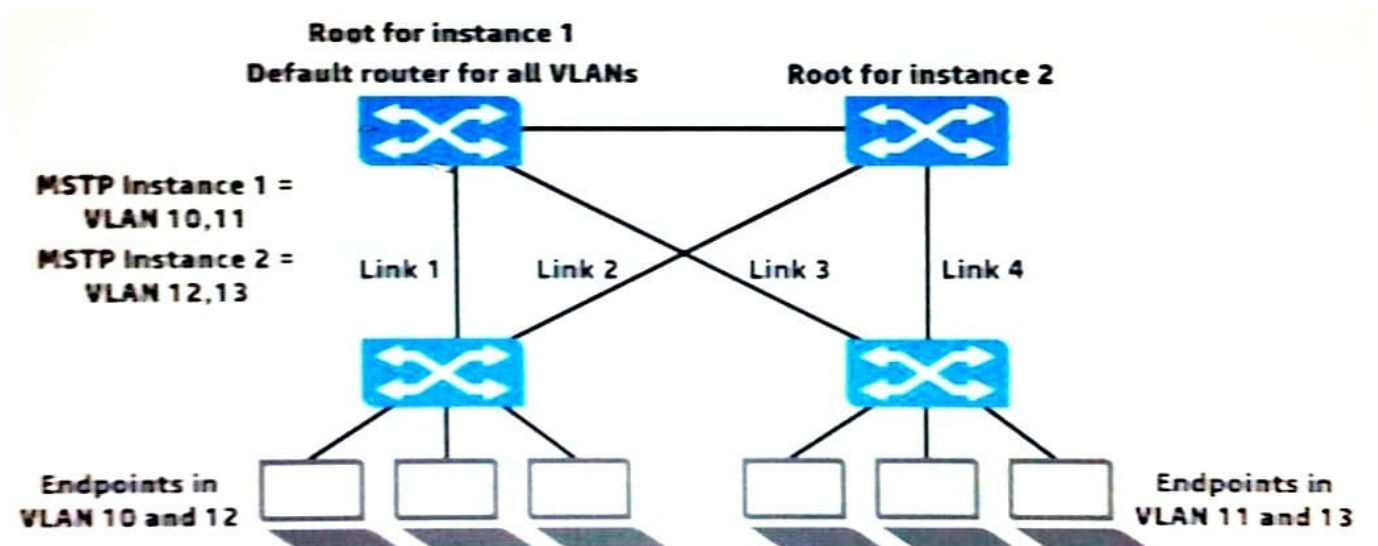
What does the output indicate about GE1/0/1?

- A. The interface accepts untagged traffic, which it assigns to VLAN 1. It drops traffic that is tagged for VLANs 1, 10, and 20.
- B. The interface accepts untagged traffic, which it assigns to VLAN 1. It also accepts traffic that is tagged for VLANs 10 and 20.
- C. The interface accepts untagged traffic, which it assigns to VLAN 1. It accepts traffic that is tagged for any VLAN between 10 and 20.
- D. The interface does not accept untagged traffic. It accepts traffic that is tagged for VLANs 1, 10, and 20.

Correct Answer: B

QUESTION 2

Refer to the exhibit.



The network administrator is setting up Multiple Spanning Tree Protocol (MSTP) with the settings shown in the exhibit. All the switches are in the same region. The administrator has requested help determining which VLANs each switch-to-switch link should carry. What is a recommendation for this topology?

- A. To prevent disruptions during link failure, Links 1-4 should carry VLANs 10-13.



B. To optimize forwarding, Links 1 and 2 should only carry VLANs 10 and 12, and Links 3 and 4 should only carry VLANs 11 and 13.

C. To ensure compatibility with MSTP, Links 1-4 should be untagged in VLAN 1 and have no tagged VLAN assignments.

D. To optimize forwarding, Links 1 and 3 should only carry VLANs 10 and 11, and Links 2 and 4 should only carry VLANs 12 and 13.

Correct Answer: D

QUESTION 3

Refer to the exhibit.

```
Provision# show vlans ports 1
```

Status and Counters - VLAN Information - for ports 1

VLAN ID	Name		Status	Voice	Jumbo
-----	-----	+	-----	-----	-----
1	VLAN1		Port-based	No	No
10	VLAN10		Port-based	No	No
20	VLAN20		Port-based	No	No

A network administrator enters the command shown in the exhibit to check the VLANs on an HP ProVision switch interface. The administrator wants to discover which VLANs are tagged and untagged on the port. What can the administrator do to accomplish this?

- A. Enter the show vlans ports 1 command but add detail at the end of the command.
- B. View all VLANs on the switch by entering the show vlans command without a VLAN ID.
- C. View the physical interface by entering the show interface brief command.
- D. Enter the show interfaces all command.

Correct Answer: A

QUESTION 4

On an HP Comware switch, which view must an administrator access in order to execute the debug command?

- A. Manager
- B. Operator
- C. System



D. User

Correct Answer: D

QUESTION 5

Refer to the exhibit.

```
[Comware] telnet server enable
[Comware] user-interface vty 0 15
[Comware-ui-vty0-15] authentication-mode password
[Comware-ui-vty0-15] set authentication password cipher password1
[Comware-ui-vty0-15] user privilege level 1
[Comware-ui-vty0-15] quit
[Comware] super authentication-mode local
[comware] super password level 3 cipher password2
```

An HP Comware switch is using its default user-interface settings. The network administrator then enters the commands shown in the exhibit. What correctly describes how an admin user must now log in?

- A. When the admin user logs in to the console port, the admin user must enter either a password of password1 or password2.
- B. When the admin user logs in using Telnet, the admin user must enter either a password of password1 or password2.
- C. When the admin logs in using Telnet, the admin user must enter a password of password1 and is given level 1 privileges.
- D. When the admin user logs in to the console port, the admin user must enter a password of password1 and is given level 3 privileges.

Correct Answer: D

[HP2-Z37 VCE Dumps](#)

[HP2-Z37 Study Guide](#)

[HP2-Z37 Exam Questions](#)