



HP2-Z34^{Q&As}

Building HP FlexFabric Data Centers

Pass HP HP2-Z34 Exam with 100% Guarantee

Free Download Real Questions & Answers **PDF** and **VCE** file from:

<https://www.passapply.com/hp2-z34.html>

100% Passing Guarantee
100% Money Back Assurance

Following Questions and Answers are all new published by HP Official Exam Center

-  **Instant Download** After Purchase
-  **100% Money Back** Guarantee
-  **365 Days** Free Update
-  **800,000+** Satisfied Customers





QUESTION 1

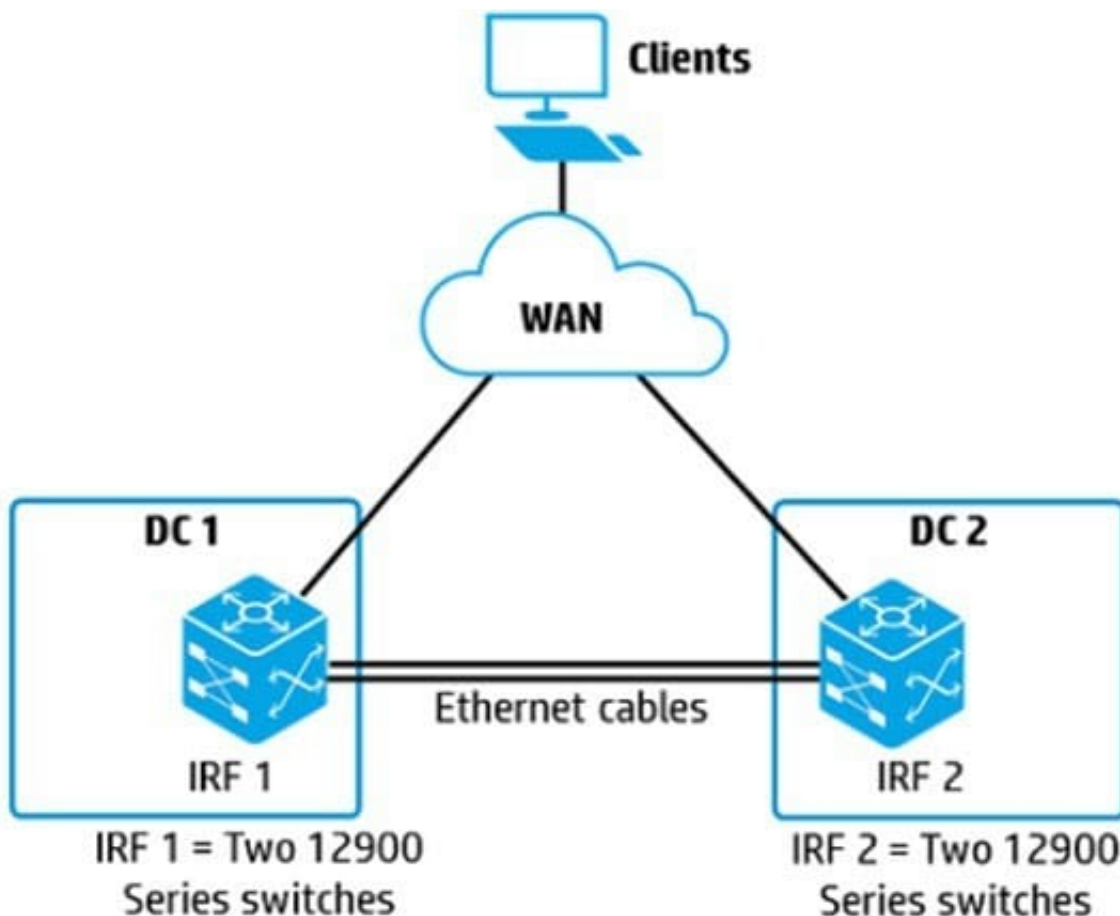
Which statement is correct about a Fibre Channel (FC) World Wide Name (WWN)?

- A. It is a hardware specific address for a LUN on a storage disk and can be used to direct FC frames to targets.
- B. It is a hardware specific address for an FC device and can be used to place the device in zones.
- C. It is assigned to an FC device based on its location and can be used to deliver FC frames
- D. It is assigned to an FC N-port as its switch joins the fabric and can be used to route FC frames

Correct Answer: B

QUESTION 2

Refer to the exhibit A company added a second data center IRF 1 and IRF 2 connect on direct Ethernet cables. What is the simplest, most flexible and resilient option for the data center connection?



- A. link aggregation between IRF 1 and IRF 2
- B. VPLS solution between IRF 1 and IRF 2



- C. EVI network between IRF 1 and IRF 2
- D. IRF 1 and IRF 2 combined into a single IRF virtual device

Correct Answer: B

QUESTION 3

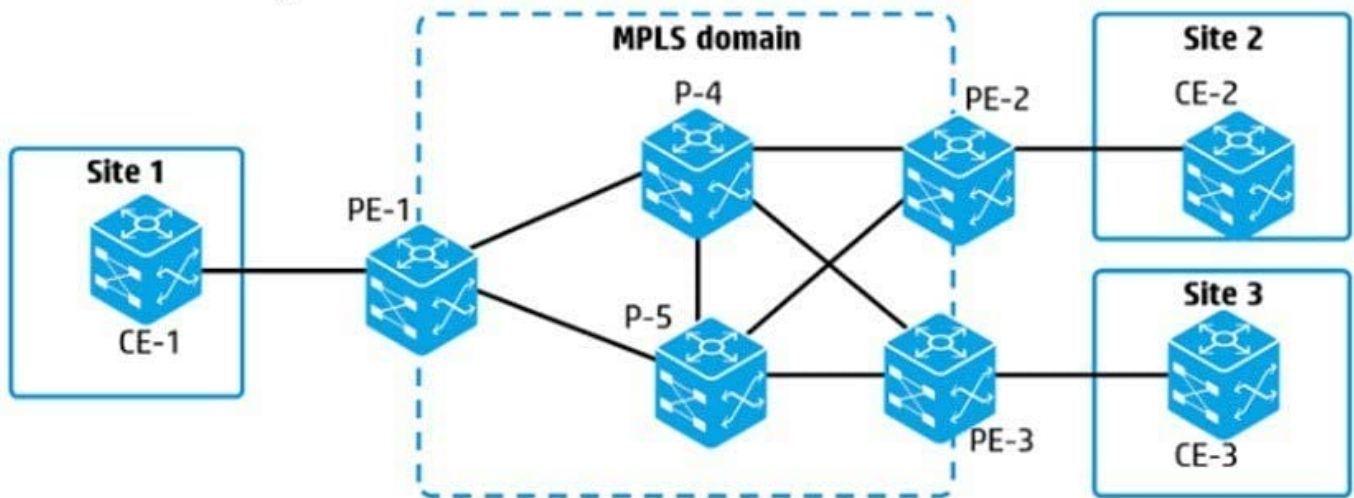
What must be used when implementing the backbone multicast feature to isolate multicasts in the SPBM region?

- A. maximum of two Equal Cost Tree (ECT) algorithms
- B. single I-SID for all VLANs belonging to the same customer
- C. head-end replication for multicasts
- D. odd-numbered VLAN IDs for B-VLANs

Correct Answer: C

QUESTION 4

Refer to the exhibit



An MPLS VPLS solution (non-hierarchical) will connect the sites shown in the exhibit. Which pseudo wire (PW) connections must the administrator configure?

- A. A full mesh of PWs between every PE router that connects to a site and every P router between them
- B. A hub-and-spoke set of PWs between one P router and all PE routers that connect to a site
- C. A full mesh of PWs between every PE router that connects to a site
- D. A hub-and-spoke set of PWs between one PE router and other PE routers that connect to a site



Correct Answer: D

QUESTION 5

An administrator binds VLAN interface 10 to VPN instance "TenantA" on an HP Comware switch by using this configuration: interface Vlan-interface 10 ip address 10.1.10.1 255.255.255.0 How does the administrator's action affect the interface IP address?

- A. The interface loses the IP address, and the administrator must configure the IP address on this interface again.
- B. The IP address remains 10.1.10.1/24 but is extended with the Route Distinguisher (RD) and can now be assigned to an interface in another VPN instance.
- C. The interface loses the IP address and the administrator must map the interface to 10.1 10.1/24 from the VPN instance context
- D. The IP address remains 10.1 10.1/24. but now this subnet can also be assigned to an interface in another VPN instance.

Correct Answer: D

[HP2-Z34 VCE Dumps](#)

[HP2-Z34 Exam Questions](#)

[HP2-Z34 Braindumps](#)