



HP2-Z34^{Q&As}

Building HP FlexFabric Data Centers

Pass HP HP2-Z34 Exam with 100% Guarantee

Free Download Real Questions & Answers **PDF** and **VCE** file from:

<https://www.passapply.com/hp2-z34.html>

100% Passing Guarantee
100% Money Back Assurance

Following Questions and Answers are all new published by HP Official Exam Center

-  **Instant Download** After Purchase
-  **100% Money Back** Guarantee
-  **365 Days** Free Update
-  **800,000+** Satisfied Customers





QUESTION 1

Which statement is correct about defining a Route Distinguisher (RD) for a VPN instance on an HP Comware switch?

- A. The RD is only required when the router runs Border Gateway Protocol (BGP) and must match the BGP router ID.
- B. The RD is only required when the router runs Border Gateway Protocol (BGP) and must be unique to that VPN instance.
- C. The RD is always required and must match the switch global router ID.
- D. The RD is always required and must be unique to that VPN instance.

Correct Answer: C

QUESTION 2

Why might a customer decide to use MDC instead of Multi-VPN-Instance CE (MCE)?

- A. to isolate tenants while maintaining the ability to leak routes in and out of a tenant instance
- B. to integrate with Intelligent Resilient Framework (IRF)
- C. to manage all routing and switch functions with a single management team
- D. to provide further segmentation between tenants at the hardware or ASIC level

Correct Answer: A

QUESTION 3

Refer to the exhibit PE-1 receives an IP packet that is destined to 10.1.10.10 and does not have an MPLS header. What does PE-1 do?

```
<PE-1> display mpls ldp lsp
Status Flags: * - stale, L - liberal
Statistics:
          FECs: 4          Ingress LSPs: 1          Transit LSPs: 1          Egress LSPs: 3
FEC      In/Out  Label  Nexthop  OutInterface
10.255.1.1/32  -/3    1151/3  10.1.1.1  vlan17
10.255.2.2/32  3/-    -/1151(L)  10.1.1.1  vlan17
10.1.10.0/24  -/1150  10.1.1.1  vlan17
10.1.20.0/24  1152/-
```

- A. drops the packet
- B. adds an MPLS header without a label and forwards the packet to 10.1.1.1 on VLAN 17
- C. adds an MPLS header with label 1150 and forwards the packet to 10.1.1.1 on VLAN 17

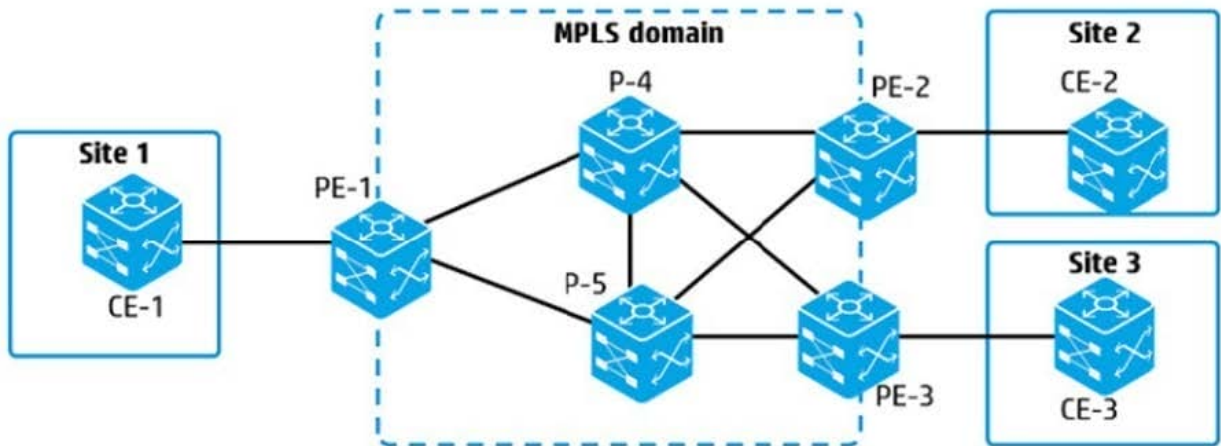


D. forwards the packet to 10.1.1.1 on VLAN 17 without an MPLS header

Correct Answer: A

QUESTION 4

Refer to the exhibit



In the exhibit, the devices labeled PE and P:

use OSPF

have established an MPLS domain.

use LDP.

have established a Martini Layer 2 VPN between Sites 1 and 2

VPN traffic is using the link between PE-1 and P-4, and this link fails.

What happens to the VPN traffic?

- A. It is disrupted for this particular site-to-site connection until the link is fixed
- B. It fails over to the link between PE-1 and P-5 only //administrators created a backup virtual circuit (VC) from PE-1 to
- C. It fails over to the link between PE-1 and P-5 only if administrators created two virtual circuits (VCs) between PE-1
- D. and PE-2.
- E. It fails over to the link between PE-1 and P-5. The failover is automatically handled by MPLS. LDP, and OSPF

Correct Answer: A

QUESTION 5



A company is adding a second data center for disaster recovery. The data centers connect over a link supplied by a service provider with an IP network. The company wants a solution that extends Layer 2 connectivity between the data centers and does not require any special services from the service provider, such as MPLS.

What can meet the needs for this design?

- A. QEVI
- B. IRF
- C. VPLS
- D. SPBM

Correct Answer: B

[HP2-Z34 VCE Dumps](#)

[HP2-Z34 Practice Test](#)

[HP2-Z34 Exam Questions](#)