



HP2-Z33^{Q&As}

HP Unified Wired-Wireless Networks and BYOD

Pass HP HP2-Z33 Exam with 100% Guarantee

Free Download Real Questions & Answers **PDF** and **VCE** file from:

<https://www.passapply.com/hp2-z33.html>

100% Passing Guarantee
100% Money Back Assurance

Following Questions and Answers are all new published by HP Official Exam Center

-  **Instant Download** After Purchase
-  **100% Money Back** Guarantee
-  **365 Days** Free Update
-  **800,000+** Satisfied Customers





QUESTION 1

A customer has an HP BYOD solution based on an HP 830 Unified Wired-Wireless Controller and HP 425 Access Points (APs). To ease the controller adoption of the APs, a VLAN is set up on the corporate LAN. How should this VLAN be configured?

- A. Set the VLAN on the switches between the APs and Comware L3 switch
- B. Set the VLAN as VLAN 1
- C. Set the VLAN on the switches between the APs and 830 wireless controller
- D. Set the VLAN on the switches between the APs and the 830 switch

Correct Answer: A

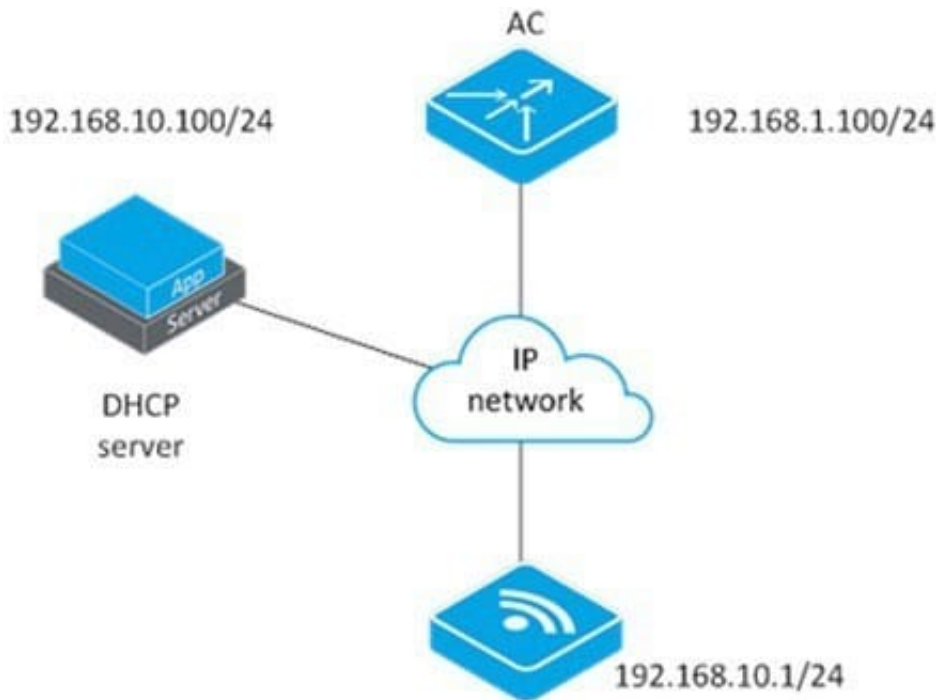
QUESTION 2

An administrator wants to configure authentication on the HP 830 switch ports that connect to wireless access points. The company policy requires all wireless users to be authenticated using 802.1X authentication. Each port should also allow multiple wireless users to pass 802.1X authentication.

Which port security mode meets these requirements?

- A. macAddressWithRadius
- B. userLoginSecure
- C. userLoginSecureExt
- D. macAddressElseUserLoginSecureExt

Correct Answer: D



An engineer is installing a new access point (AP). The AP has successfully acquired an IP address. The engineer can ping the access controller (AC) from the AP. However the AC is not discovering the AP. What could cause this problem?

- A. The interface between the AC and the IP network is down.
- B. The AC and AP must be in the same subnetwork.
- C. The AP and AC are not in the same VLAN.
- D. The DHCP server has not been set up with option 43.

QUESTION 3

A customer is planning to deploy HP MSM466-R access points in an extreme cold environment to interconnect to the Unified Wired-WLAN Module in the HP switch. Which requirement is needed to accomplish this?

- A. NEMA 4X enclosures should be used to house the access points.
- B. Switch ports must support PoE.
- C. PoE redundancy must be enabled on the interface.
- D. Access Point must deploy internal antennas.

Correct Answer: B

QUESTION 4

It is Monday morning, and no one can connect to the wireless network. The network administrator suspects that the



access controller's certificate may have expired and is no longer valid. How can the administrator check if this is the problem?

- A. On the access controller, navigate to Authenticate > Certificate Management, and click the CRL tab. Then click Retrieve CRL
- B. On the access controller, navigate to Authenticate > Certificate Management and click the Domain tab. Then click Retrieve CRL
- C. On the access controller, navigate to Authenticate > Certificate Management and click the Entity tab. Then click Request Cert.
- D. On the access controller, navigate to Authenticate > Certificate Management and click the Certificate tab. Then click Request Cert.

Correct Answer: A

QUESTION 5

An organization wants to upgrade their wireless network to allow employees to connect using their 802.11ac enabled devices. Which HP access points meet this requirement?

- A. HP 425
- B. HPMSM466
- C. HP MSM430
- D. HP 560

Correct Answer: D

[HP2-Z33 VCE Dumps](#)

[HP2-Z33 Practice Test](#)

[HP2-Z33 Exam Questions](#)