



# HP2-Z33<sup>Q&As</sup>

HP Unified Wired-Wireless Networks and BYOD

## Pass HP HP2-Z33 Exam with 100% Guarantee

Free Download Real Questions & Answers **PDF** and **VCE** file from:

<https://www.passapply.com/hp2-z33.html>

100% Passing Guarantee  
100% Money Back Assurance

Following Questions and Answers are all new published by HP Official Exam Center

-  **Instant Download** After Purchase
-  **100% Money Back** Guarantee
-  **365 Days** Free Update
-  **800,000+** Satisfied Customers





### QUESTION 1

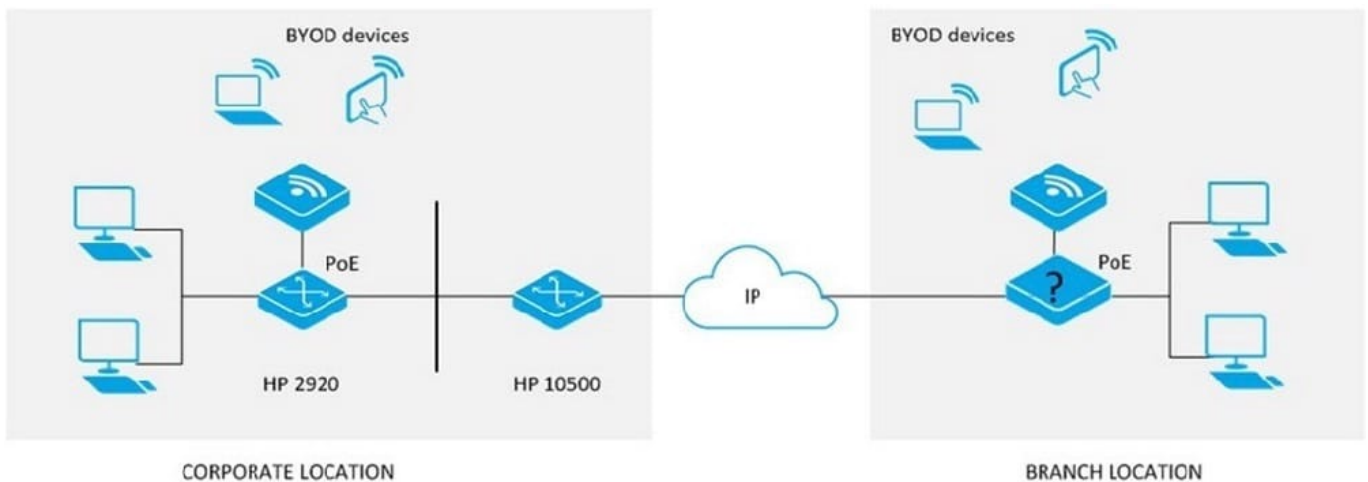
An HP BYOD solution is deployed on a wireless infrastructure. Which components actively participate in the RADIUS authentication process of a user endpoint? (Select two)

- A. HP APs associated with an HP Unified Wireless controller in its default setup
- B. HP Wireless Service Manager (WSM)
- C. HP 830 Switch
- D. HP User Access Manager
- E. HP 830 Access Controller

Correct Answer: AD

### QUESTION 2

Refer to the exhibit.



A company wants to connect a mid-size branch office to their corporate location. An HP 10500/7500 Unified Wired-Wireless module is deployed at the corporate location. A maximum of six HP MSM access points will be deployed at the branch location.

Which HP device meets these customer requirements and is the most cost effective solution for the branch location?

- A. HP 830
- B. HP 870
- C. HP 2920
- D. HP 7500

Correct Answer: A



### QUESTION 3

What is an attribute of an autonomous AP?

- A. managed through a Web browser or a command line interface
- B. supported on the HP 425 AP
- C. must be powered by a PoE switch
- D. supports layer 2 and layer 3 roaming

Correct Answer: A

---

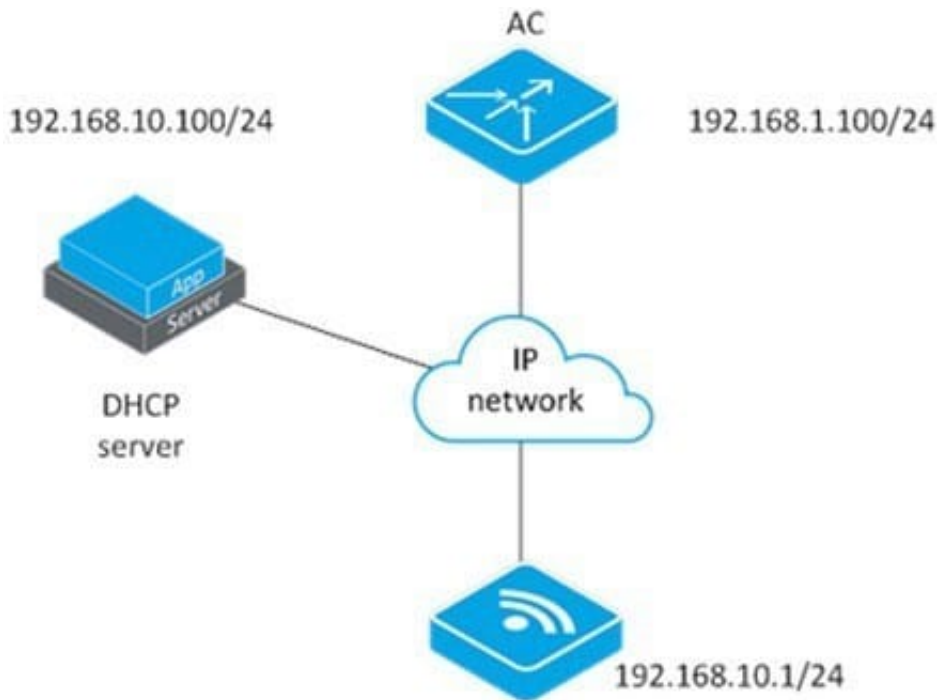
### QUESTION 4

An administrator wants to configure authentication on the HP 830 switch ports that connect to wireless access points. The company policy requires all wireless users to be authenticated using 802.1X authentication. Each port should also allow multiple wireless users to pass 802.1X authentication.

Which port security mode meets these requirements?

- A. macAddressWithRadius
- B. userLoginSecure
- C. userLoginSecureExt
- D. macAddressElseUserLoginSecureExt

Correct Answer: D



An engineer is installing a new access point (AP). The AP has successfully acquired an IP address. The engineer can ping the access controller (AC) from the AP. However the AC is not discovering the AP. What could cause this problem?

- A. The interface between the AC and the IP network is down.
- B. The AC and AP must be in the same subnetwork.
- C. The AP and AC are not in the same VLAN.
- D. The DHCP server has not been set up with option 43.

#### QUESTION 5

Where can a network administrator check for successful authentication in User Access Manager?

- A. User Access Log > Auth Failure Log
- B. User Access > LDAP Users
- C. User Access Log > Access Details
- D. User Access > Access Device Log

Correct Answer: C

[HP2-Z33 VCE Dumps](#)

[HP2-Z33 Practice Test](#)

[HP2-Z33 Study Guide](#)