



HP2-Z31^{Q&As}

Creating HP Software-defined Networks

Pass HP HP2-Z31 Exam with 100% Guarantee

Free Download Real Questions & Answers **PDF** and **VCE** file from:

<https://www.passapply.com/hp2-z31.html>

100% Passing Guarantee
100% Money Back Assurance

Following Questions and Answers are all new published by HP Official Exam Center

-  **Instant Download** After Purchase
-  **100% Money Back** Guarantee
-  **365 Days** Free Update
-  **800,000+** Satisfied Customers





QUESTION 1

Refer to the exhibit.

GET /of/datapaths List datapaths

Implementation Notes
List all datapaths that are managed by this controller.

Parameters

Parameter	Value	Description
-----------	-------	-------------

[Hide Response](#)

Request URL

```
https://192.168.56.7:8443/sdn/v2.0/of/datapaths
```

Response Body

```
{  "error": "com.hp.api.auth.AuthenticationException",  "message": "Authentication required"}
```

Response Code

```
401
```

Response Headers

```
Date: Wed, 26 Feb 2014 22:24:09 GMT
Server: Apache-Coyote/1.1
X-FRAME-OPTIONS: deny
Transfer-Encoding: chunked
Access-Control-Allow-Methods: GET, POST, PUT, HEAD, PATCH, GET, POST, PUT, HEAD, PATCH
Content-Type: application/json
Access-Control-Allow-Origin: *
Access-Control-Allow-Headers: Content-Type, Accept, X-Auth-Token, Content-Type, Accept, X-Auth-Token
```

(page 21)

http://h20628.www2.hp.com/km-ext/kmcsdirect/emr_na-c03512348-4.pdf

An SDN developer has tried use RSDoc to dis-cover the datapaths in the network. However, the error in the exhibit is displayed. Why is an error returned rather than the datapaths?

- A. RSDoc does not support the submission of datapath requests until a token has been received oURL.
- B. A username and password has not been submitted to the controller via RSDoc.
- C. A Service Token has been submitted to the controller via the Token field in RSDoc.
- D. An Auth Token has not been submitted to the controller via the Token field in RSDoc.

Correct Answer: D

This is an AuthenticationException.



Note: The SDN controller relies on token-based authentication to authenticate its REST APIs. In other words, all REST APIs except the /auth and /rsdoc APIs require an authentication token embedded in an "X-Auth-Token" header to be included with each REST request. The /auth API allows you to obtain a token, while the /rsdoc API provides live REST API documentation information about the controller's REST API.

Reference: HP VAN SDN Controller Administrator Guide

QUESTION 2

Which Open Flow plane is responsible for forwarding the packets?

- A. Control plane
- B. Application plane
- C. Management plane
- D. Data plane

Correct Answer: D

The forwarding table is delivered to the data plane by the management plane as part of the device operating system. Thus when an Ethernet frame arrives on the switch interface, the data plane then forwards it to output port.

Note: OpenFlow defines a standard for sending flow rules to network devices so that the Control Plane can add them to the forwarding table for the Data Plane.

Incorrect:

Not A: The control plane will use the routing table to build the forwarding table used by data plane.

Not C: The Management Plane handles functions such device management, firmware updates, SNMP and external configuration via the CLI.

Reference: OpenFlow and Software Defined Networking: Is it Routing or Switching ?

QUESTION 3

A network administrator wants to back up the HP VAN SDN Controller. Which files will need to be downloaded and kept together? (Select two.)

- A. sdn_controller_backup_.rar
- B. sdn_concroller_backup_.rar.MD5
- C. sdn_cont;roller_backup_.zip
- D. sdn_controller_backup_.zip.MD5



E. sdn controller backup .tgz

Correct Answer: CD

Download a Backup From the Controller to Another Location Both the .zip file and the .MD5 (checksum) file (zip.MD5) should be downloaded to the same, secure location. Choose the correct name now; you cannot rename the files later Details (check the file extensions):

1.

Download the Backup .zip File: `curl --noproxy --header "X-Auth-Token:" --fail -ksSfL --request GET --url "https://:8443/sdn/v2.0/systems//backup?csum=false" > .zip`

2.

Download the backup .MD5 (Checksum) File `curl --noproxy --header "X-Auth-Token:" --fail -ksSfL --request GET --url "https://:8443/sdn/v2.0/systems//backup?csum=true" > .zip.MD5`

Reference: HP VAN SDN Controller Administrator Guide

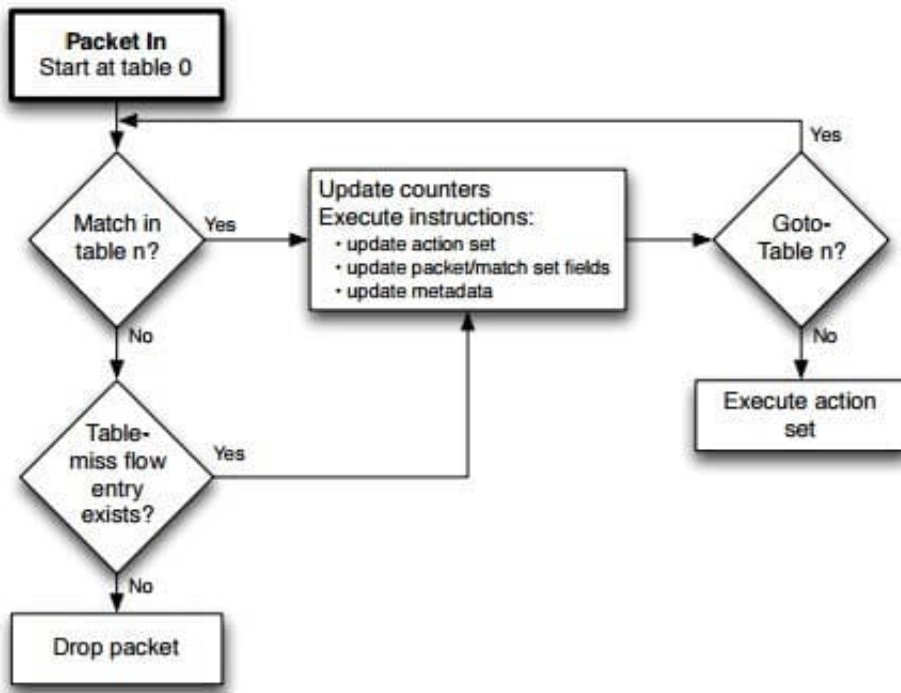
QUESTION 4

Spanning Tree Protocol is disabled on a network edge port. The port is assigned to a VLAN, which is a member of an aggregate OpenFlow 1.0 instance. What is the default behavior of all ingress traffic when no flow entry exists?

- A. Only SDN classified traffic is forwarded to the SDN Controller.
- B. All traffic is discarded.
- C. All traffic is forwarded to the egress port to the final destination address.
- D. All traffic is forwarded to the SDN Controller.

Correct Answer: B

Flowchart detailing packet flow through an OpenFlow switch.



Reference: OpenFlow Switch Specification Version 1.3.1

QUESTION 5

What is used by the HP VAN SDN Controllers for internal communication between controllers?

- A. REST API Token
- B. Admin ToKen
- C. Auth ToKen
- D. Service Token

Correct Answer: D

The Service token is used for internal communication between controllers and is not exposed to the user.

Reference: HP VAN SDN Controller Administrator Guide, Service and Admin Tokens

[Latest HP2-Z31 Dumps](#)

[HP2-Z31 PDF Dumps](#)

[HP2-Z31 VCE Dumps](#)