



HP0-Y51^{Q&As}

Building HP SDN and FlexNetwork Solutions

Pass HP HP0-Y51 Exam with 100% Guarantee

Free Download Real Questions & Answers **PDF** and **VCE** file from:

<https://www.passapply.com/hp0-y51.html>

100% Passing Guarantee
100% Money Back Assurance

Following Questions and Answers are all new published by HP Official Exam Center

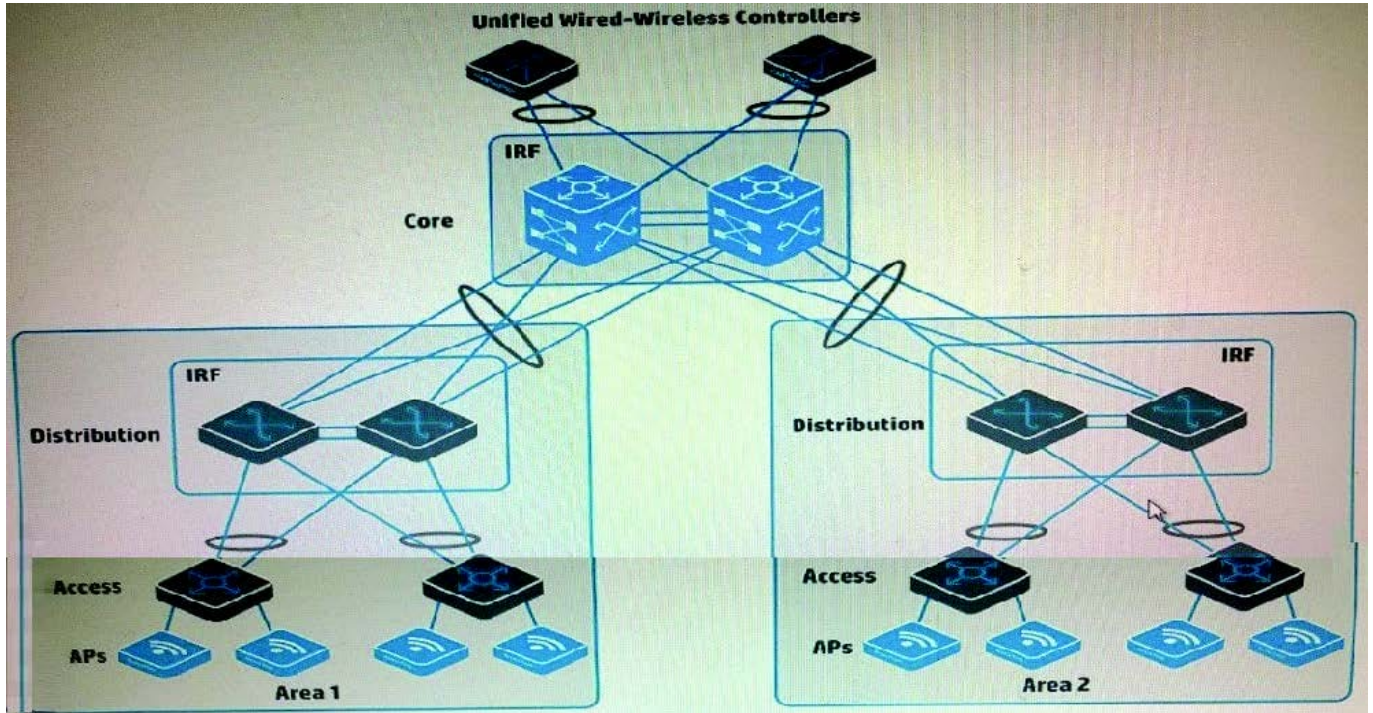
-  **Instant Download** After Purchase
-  **100% Money Back** Guarantee
-  **365 Days** Free Update
-  **800,000+** Satisfied Customers





QUESTION 1

Refer to the exhibit.



A company has HP APs that are managed by the two Unified Wired-Wireless controllers. Wireless users use Wi-Fi Protected access (WPA2) and authenticate with 802.1X to HP Access Manager (UAM). The SSID uses centralized forwarding. Users need to be able to roam seamlessly from area 1 to area 2.

Which step helps to meet these needs?

- A. Configure local forwarding for the SSID on both controllers.
- B. Configure controller 1 as a backup controller for APs in area; configure controller 2 as a backup controller for APs in area1.
- C. Change the security mode to preshared key (PSK) and enable opportunistic key change (also called "fast roaming").
- D. Set up enable a roam that includes both controllers.

Correct Answer: A

QUESTION 2

What correctly describes the role of OpenFlow in an SDN solution?

- A. OpenFlow regulates the communications among teamed SDN controllers, as well as between an SDN controller and a network infrastructure device



- B. OpenFlow integrates the SDN controller into a larger management suite such as that provided in an HP CloudSystem solution.
- C. OpenFlow is a communication protocol that an SDN controller can use to control devices at the network infrastructure layer.
- D. OpenFlow is the open standard technology that regulates SDN control plane and application plane communications.

Correct Answer: C

Reference: <http://searchsdn.techtarget.com/guides/OpenFlow-protocol-tutorial-SDN-controllers-and-applications-emerge>

QUESTION 3

A company has an Employees SSID, which enforces Wi-Fi Protected Access 2 (WPA2) with 802.1X. The company has a Contractors SSID, which has no encryption. Contractors can connect their own devices to the Contractors SSID and log in the credentials assigned to them by an employee. HP User Access Manager (UAM) has these services:

A Contractor access service, which is assigned to contractor accounts created by employees

An Employee access service, which is assigned to employee accounts synchronized from Active Directory (AD)

A new company policy encourages contractors to use encryption. Contractors should download certificates when they connect to Contractors SSID and register. Then the contractors can connect to the Employees SSID and have an encrypted connection.

How does the administrator enable the contractors to connect to the Employees SSID but receive the correct contractor VLAN assignment?

- A. In the Employee access service, bind the Contractor group to an access policy that specifies the contractor VLAN ID and PAP authentication.
- B. In the Employee access service, bind the Contractor group to an access policy that specifies the contractor VLAN ID and EAP-TLS certificate authentication
- C. In the Contractor access service, bind the Employees SSID to an access policy that specifies the contractor VLAN ID and EAP-TLS certificate authentication
- D. In the Contractor access service, bind the Employees SSID to an access policy that specifies the contractor VLAN ID and PAP authentication

Correct Answer: C

QUESTION 4

A company has an HP BYOD solution. The administrator is setting up synchronization of user accounts from Active



Directory (AD). The administrator wants User Access Manager (UAM) to organize the user accounts in groups in the same way that AD does.

How does the administrator configure this to accomplish the goal?

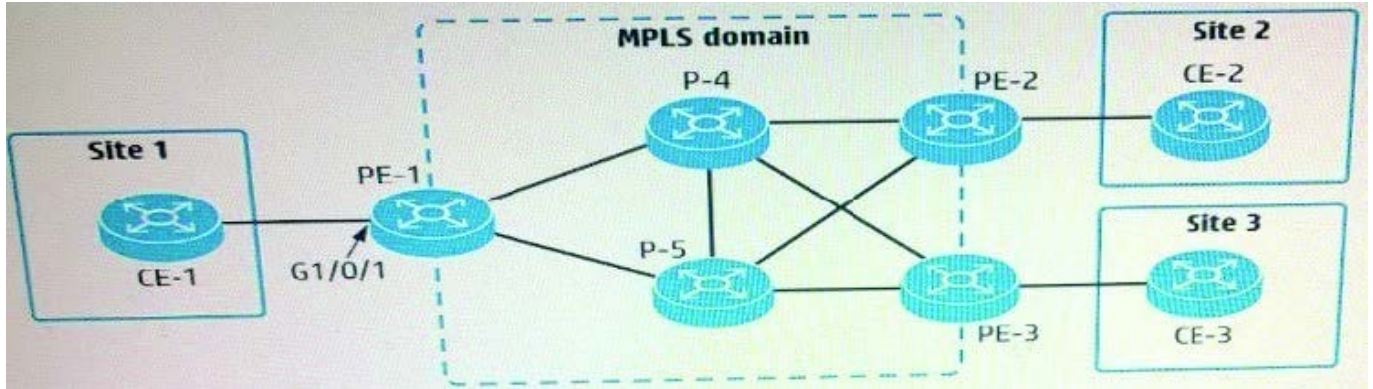
- A. Establish the LDAP synchronization policy, and then create a user group policy to synchronize the groups and sort the user accounts
- B. In the LDAP Server policy, set the User Group setting to Synchronize by OU, which allows AD to create the groups automatically
- C. Install the UAM agent on the AD server, otherwise, UAM can only synchronize the highest- level group of domain users.
- D. Create every group before setting up the LDAP synchronization policy

Correct Answer: B

QUESTION 5

Table of Acronyms Refer to the exhibit.

Acronym	Full Name
EVI	Ethernet Virtual Interconnect
FCoE	Fibre Channel over Ethernet
L2VPN	Layer 2 Virtual Private Network
MDC	Multitenant Device Context
MPLS	Multiprotocol Label Switching
SPBM	Shortest Path Bridging MAC-in-MAC mode
TRILL	Transparent Interconnection of Lots of Links
VPLS	Virtual Private LAN Service
VPN	Virtual Private Network
LDP	Label Distribution Protocol



An administrator wants to establish a remote LDP session between PE-1 (loopback IP address 10.0.0.1) and PE-2 (loopback IP address; 10.0.0.2). What is required to do this?

- A. Both PE-1 and PE-2 have a VPN instance that is defined with the same route distinguisher (RD)
- B. Both PE-1 and PE-2 advertise the same label for their loopback IP address
- C. Both PE-1 and PE-2 use ordered mode for LDP.
- D. Both PE-1 and PE-2 advertise their loopback IP address with OSPF and with LDP.

Correct Answer: D

[Latest HP0-Y51 Dumps](#)

[HP0-Y51 Practice Test](#)

[HP0-Y51 Exam Questions](#)