



# HP0-Y51<sup>Q&As</sup>

Building HP SDN and FlexNetwork Solutions

## Pass HP HP0-Y51 Exam with 100% Guarantee

Free Download Real Questions & Answers **PDF** and **VCE** file from:

<https://www.passapply.com/hp0-y51.html>

100% Passing Guarantee  
100% Money Back Assurance

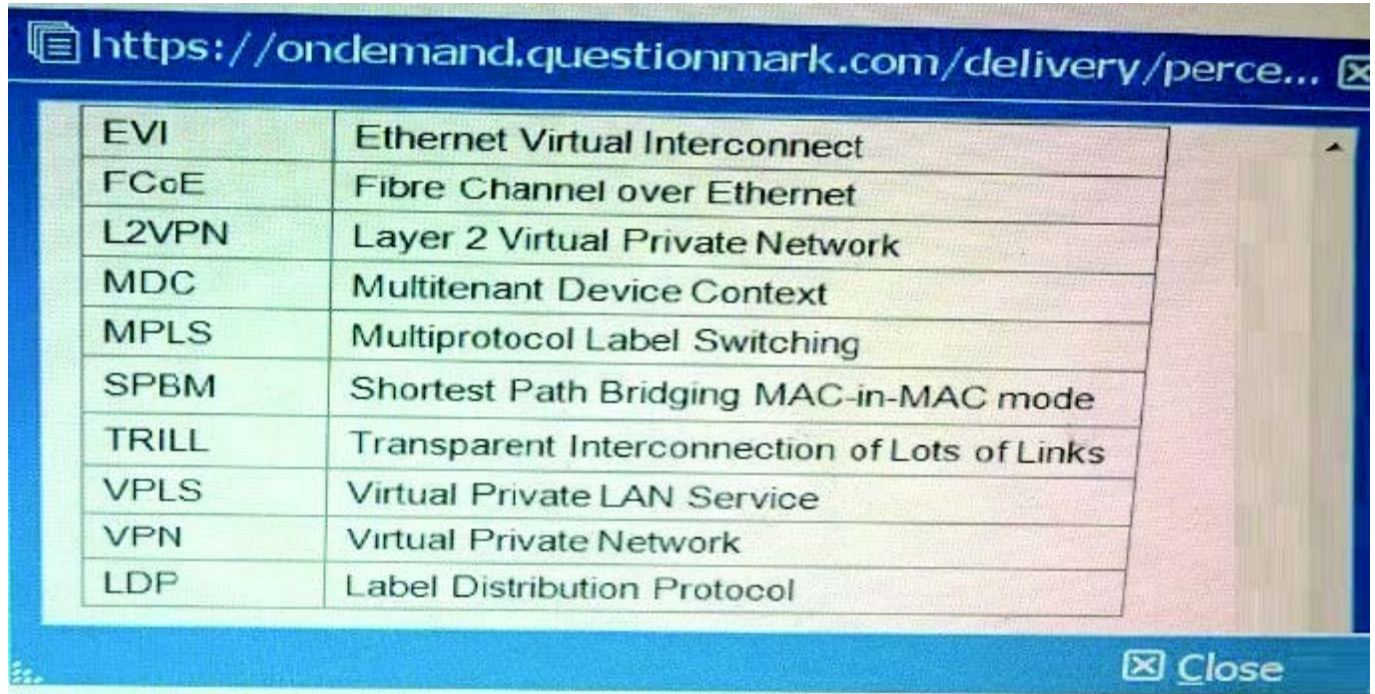
Following Questions and Answers are all new published by HP Official Exam Center

-  **Instant Download** After Purchase
-  **100% Money Back** Guarantee
-  **365 Days** Free Update
-  **800,000+** Satisfied Customers



**QUESTION 1**

Table of Acronyms Refer to the exhibit.



The screenshot shows a web browser window with the address bar displaying <https://ondemand.questionmark.com/delivery/perce...>. The main content area contains a table with two columns: the first column lists acronyms and the second column lists their full names. The table is displayed on a light blue background. At the bottom right of the browser window, there is a 'Close' button with a small icon.

EVI	Ethernet Virtual Interconnect
FCoE	Fibre Channel over Ethernet
L2VPN	Layer 2 Virtual Private Network
MDC	Multitenant Device Context
MPLS	Multiprotocol Label Switching
SPBM	Shortest Path Bridging MAC-in-MAC mode
TRILL	Transparent Interconnection of Lots of Links
VPLS	Virtual Private LAN Service
VPN	Virtual Private Network
LDP	Label Distribution Protocol





```
#Device1 partial running-config
evi site-id 1
interface GigabitEthernet1/0/1
  port access vlan 101
  evi enable
interface vlan-interface101
  ip address 10.0.0.2 255.255.255.0
interface tunnel 1
  source 10.0.0.2
  evi network-id 1
  evi neighbor-discovery server enable
  evi neighbor-discovery client enable 10.0.2.2

#Device2 partial running-config
evi site-id 2
interface GigabitEthernet1/0/1
  port access vlan 102
  evi enable
interface vlan-interface102
  ip address 10.0.2.2 255.255.255.0
interface tunnel 1
  source 10.0.2.2
  evi network-id 2
  evi neighbor-discovery server enable
  evi neighbor-discovery client enable 10.0.0.2

#Device3 partial running-config
evi site-id 3
interface GigabitEthernet1/0/1
  port access vlan 103
  evi enable
interface vlan-interface103
  ip address 10.0.3.2 255.255.255.0
interface tunnel 1
  source 10.0.3.2
  evi network-id 3
  evi neighbor-discovery client enable 10.0.0.2
  evi neighbor-discovery client enable 10.0.2.2
```

A company has three data centers, each with a connection to a service provider network. The administrator has configured the settings shown in the exhibit, but the EVI links are not coming up. What should the administrator do to correct the problem?

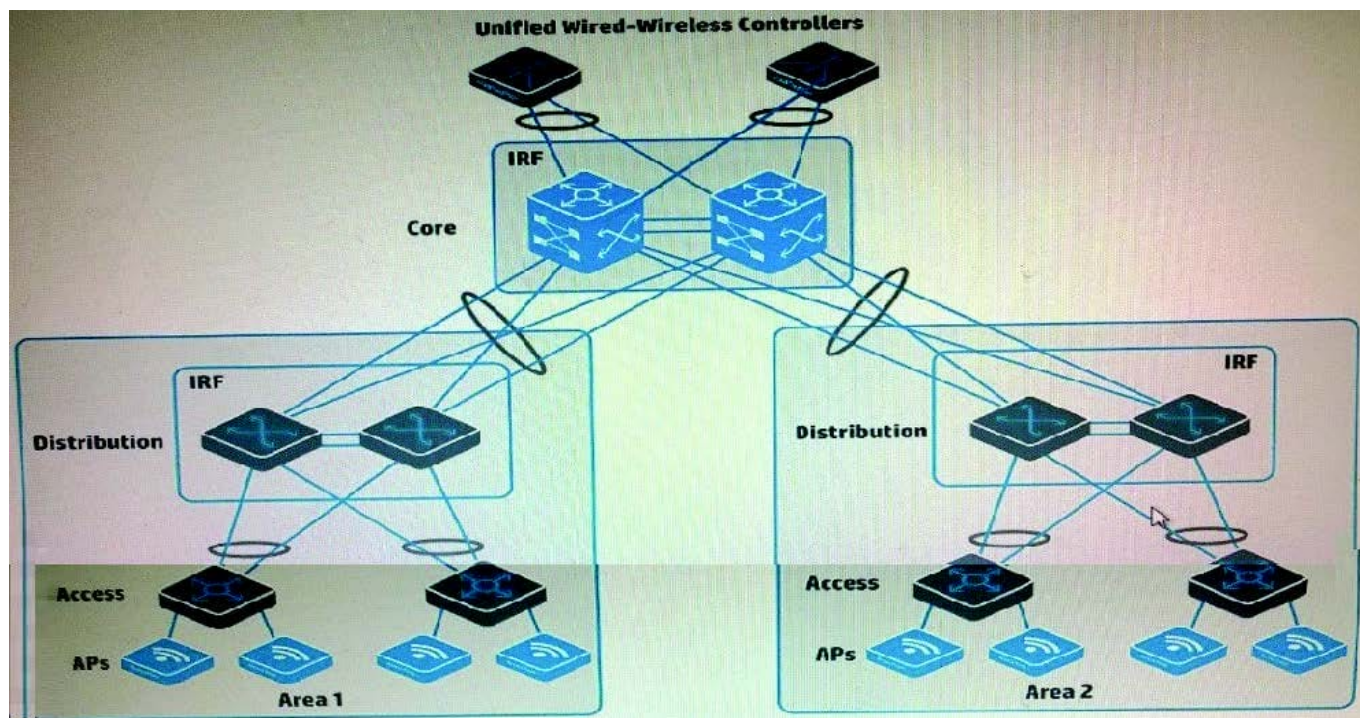
- A. Change the EVI site ID on each device to match.
- B. Add destination IP addresses to the tunnel interfaces.
- C. Enable 1S-1S on the VLAN interfaces that connect to the service provider.
- D. Change the EVI network ID on each device to match.

Correct Answer: C



## QUESTION 2

Refer to the exhibit.



A company has HP APs that are managed by the two Unified Wired-Wireless controllers. Wireless users use Wi-Fi Protected access (WPA2) and authenticate with 802.1X to HP Access Manager (UAM). The SSID uses centralized forwarding. Users need to be able to roam seamlessly from area 1 to area 2.

Which step helps to meet these needs?

- A. Configure local forwarding for the SSID on both controllers.
- B. Configure controller 1 as a backup controller for APs in area; configure controller 2 as a backup controller for APs in area1.
- C. Change the security mode to preshared key (PSK) and enable opportunistic key change (also called "fast roaming").
- D. Set up enable a roam that includes both controllers.

Correct Answer: A

## QUESTION 3

Table of Acronyms



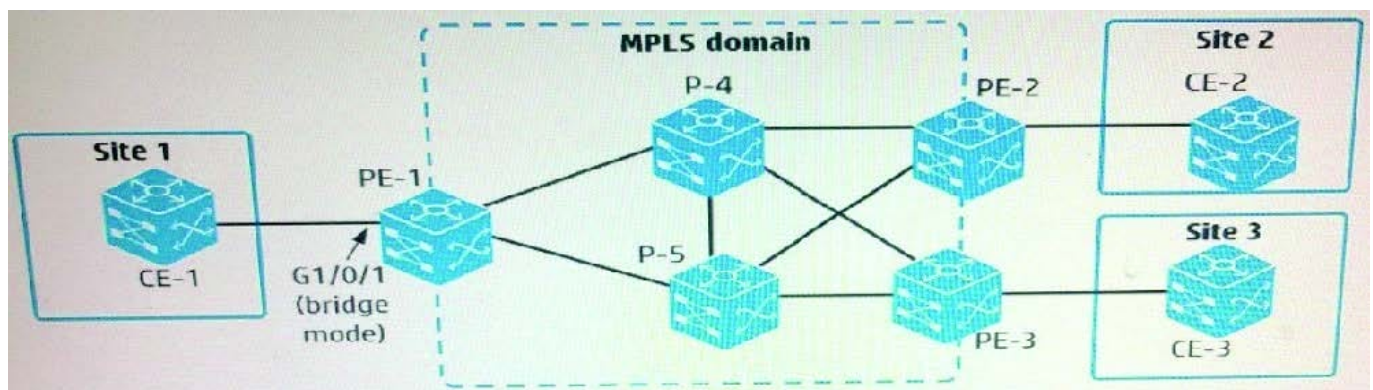


<https://ondemand.questionmark.com/delivery/perc...> [X]

EVI	Ethernet Virtual Interconnect
FCoE	Fibre Channel over Ethernet
L2VPN	Layer 2 Virtual Private Network
MDC	Multitenant Device Context
MPLS	Multiprotocol Label Switching
SPBM	Shortest Path Bridging MAC-in-MAC mode
TRILL	Transparent Interconnection of Lots of Links
VPLS	Virtual Private LAN Service
VPN	Virtual Private Network
LDP	Label Distribution Protocol

[X] Close

Refer to the exhibit.



An administrator is configuring an MPLS and VPLS Martini to connect customer Sites 1, 2, and

3. The administrator has created Virtual Switch Instance (VSI) "CustomerA" for this purpose. How should the administrator connect customer Site 1 to the VPLS solution?

- A. Create a service instance on the VLAN assigned to g1/0/1. Also create a global cross-connect group, and bind the CustomerA VSI and the service instance in that group.
- B. Create a service instance on g1/0/1. Also create a global cross-connect group, and bind the CustomerA VSI and the service instance in that group.
- C. Create a service instance on the VLAN assigned to g1/0/1. Bind (cross-connect) that instance to the CustomerA VSI.
- D. Create a service instance on g1/0/1. Bind (cross-connect) that instance to the CustomerA VSI.

Correct Answer: A





#### QUESTION 4

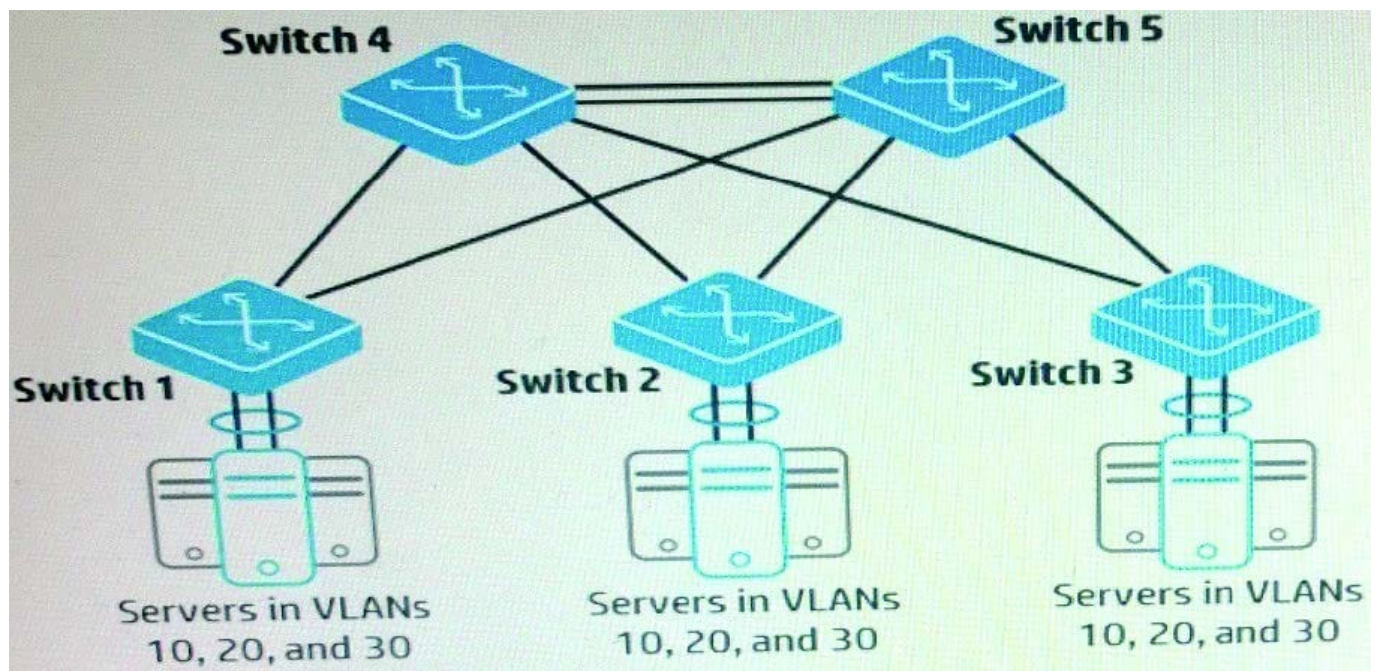
Table of Acronyms

<https://ondemand.questionmark.com/delivery/per...>

EVI	Ethernet Virtual Interconnect
FCoE	Fibre Channel over Ethernet
L2VPN	Layer 2 Virtual Private Network
MDC	Multitenant Device Context
MPLS	Multiprotocol Label Switching
SPBM	Shortest Path Bridging MAC-in-MAC mode
TRILL	Transparent Interconnection of Lots of Links
VPLS	Virtual Private LAN Service
VPN	Virtual Private Network
LDP	Label Distribution Protocol

Close

Refer to the exhibit.



The switches shown in the exhibit form a TRILL region. What helps to load balance traffic across the links between these switches?



- A. The TRILL cost for each link is the same, and TRILL Equal Cost Multi-Path (ECMP) is enabled.
- B. VLANs 10, 20, and 30 are mapped to different spanning tree instances.
- C. The switch-to-switch links are configured to permit at least two VLANs.
- D. Switch 4 and Switch 5 are assigned the same Designated RBridge (DRB) priority.

Correct Answer: A

## QUESTION 5

Table of Acronyms Exhibit 1

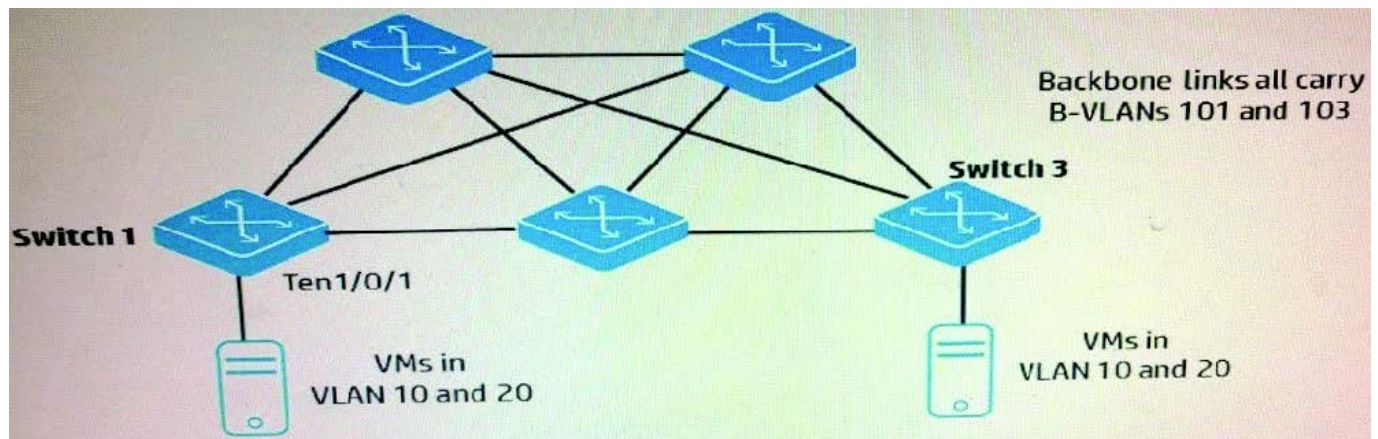


Exhibit 2 The switches shown in the exhibit are implementing SPBM. The administrator is now setting up interface ten1/0/1 to connect to a new VMware host. What is the correct port type and VLAN assignment for the interface?





```
#Portions of the running-config for switch 1

vsi 10
  spb i-sid 10
  b-vlan 101
#
vsi 20
  spb i-sid 10
  b-vlan 103

interface Ten-GigabitEthernet1/0/1
  port link-mode bridge
  service-instance 1
    encapsulation s-vid 10
    xconnect vsi 10
  service-instance 2
    encapsulation s-vid 20
    xconnect vsi 20
```

- A. Trunk port than permits VLANs 101 and 103
- B. Hybrid port than permits VLANs 201 and 203
- C. Trunk port that permits VLANs 10 and 20
- D. Access port that permits the default VLAN

Correct Answer: A

[Latest HP0-Y51 Dumps](#)

[HP0-Y51 Exam Questions](#)

[HP0-Y51 Braindumps](#)