



HP0-Y50^{Q&As}

Architecting HP FlexNetwork Solutions

Pass HP HP0-Y50 Exam with 100% Guarantee

Free Download Real Questions & Answers **PDF** and **VCE** file from:

<https://www.passapply.com/hp0-y50.html>

100% Passing Guarantee
100% Money Back Assurance

Following Questions and Answers are all new published by HP Official Exam Center

-  **Instant Download** After Purchase
-  **100% Money Back** Guarantee
-  **365 Days** Free Update
-  **800,000+** Satisfied Customers





QUESTION 1

A network architect has collected data on link utilization. When analyzing link utilization, what is the general guideline?

- A. You upgrade a link that is often used at more than 50 percent utilization
- B. You upgrade a link when it reaches 100 percent utilization
- C. You upgrade a link if it sometimes peaks at more than 50 percent utilization
- D. You upgrade a link when it reaches 25 to 30 percent utilization

Correct Answer: A

QUESTION 2

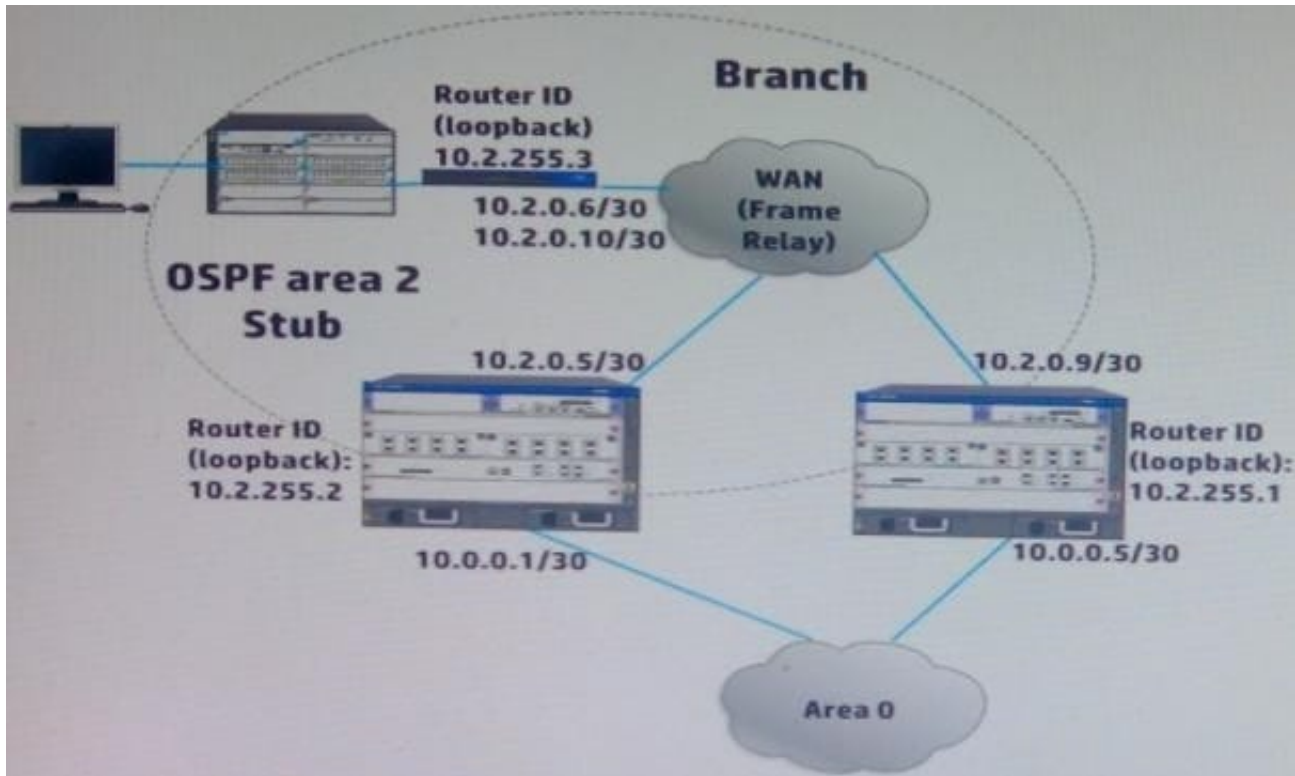
A network architect is compiling information about the total cost ownership (TCO) for a proposal. Which factors play a role in TCO?

- A. Cost of remediation due to a future security breach
- B. Cost of regulatory fines associated with non-compliance
- C. Cost of upgrading modules for the proposal
- D. Cost of powering the solution

Correct Answer: D

QUESTION 3

Refer to the exhibit.



The branch routers have E1 lines into the Frame Relay Service provider network. The exhibit shows just one branch, but the network actually has 30 branches. The HP 6600 Series routers, which are the area border routers (ABRs), have E2

lines into the Frame Relay network.

The routers in the exhibit Open Shortest Path First (OSPF). The enable OSPF on network follows:

In area 2, OSPF is enabled on network 10.2.0.0/16 In area 0, OSPF is enabled on network 10.0.0.0/16

The customer requires resilience at the WAN core. Which design change best supports that requirement?

- A. Add additional links from the HP 6600 Series routers to the WAN
- B. On each branch router, add a floating static route to one of the ABRs in case the OSPF solution fails
- C. Add a Gigabit link between the HP 6600 Series router with a network in area 0 and area 2.
- D. At each branch, add a redundant link between the switch and the router

Correct Answer: B

QUESTION 4

A network architect has planned several validation tests and user acceptance tests (UATs) for a new HP solution. In order to ensure meaningful results, what is one step that the network should complete before implementing the new solution?

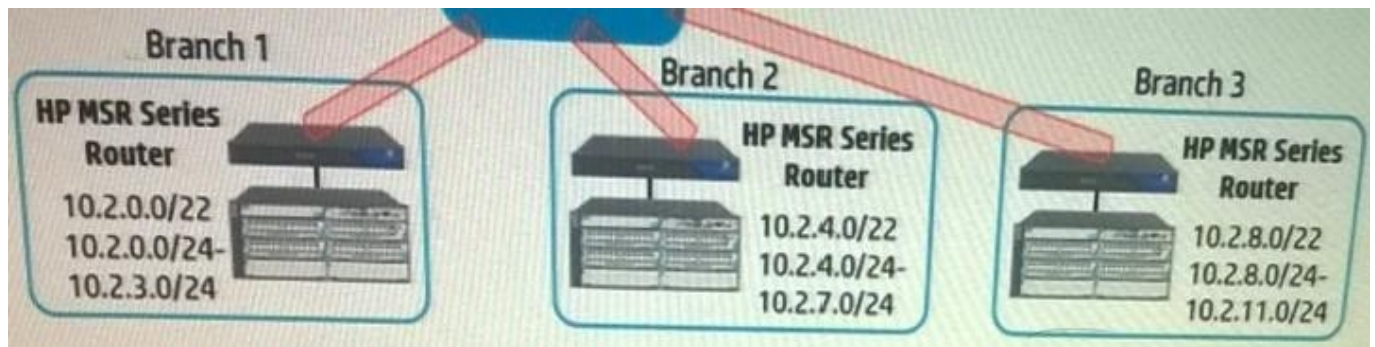
- A. Talk with key authentication to determine valid maintenance windows for the UATs



- B. Plan how long it will take to rollback the new solution of the tests indicate poor results
- C. Schedule a point of no return, after which results will not be accepted
- D. Run the same tests on the existing network solution

Correct Answer: D

QUESTION 5



A company has several branch offices, each of which has four VLANs: one for employees, one for guests, one for network infrastructure local services. At each office, a VLAN has a maximum of 200 endpoints. Each branch office represents one Open Shortest path First (OSP) architect has created the plan shown in the exhibit for IP addressing. What is a potential disadvantage of this design?

- A. The subnets are large enough to accommodate fewer endpoints. But not large enough to accommodate 200 endpoints
- B. It makes it more complicated for the company to add subnets to branches in the future.
- C. The scheme uses private network addressing space, which is not permitted for use with OSPF.
- D. The address blocks do not provide enough IP addresses for the devices currently at each branch.

Correct Answer: B

[HP0-Y50 VCE Dumps](#)

[HP0-Y50 Study Guide](#)

[HP0-Y50 Exam Questions](#)