



H12-321^{Q&As}

HCIP-WLAN-CEWA V1.0

Pass Huawei H12-321 Exam with 100% Guarantee

Free Download Real Questions & Answers **PDF** and **VCE** file from:

<https://www.passapply.com/h12-321.html>

100% Passing Guarantee
100% Money Back Assurance

Following Questions and Answers are all new published by Huawei
Official Exam Center

-  **Instant Download** After Purchase
-  **100% Money Back** Guarantee
-  **365 Days** Free Update
-  **800,000+** Satisfied Customers





QUESTION 1

When the dual-link hot standby switchover is performed, what is the correct behavior about the AP and the user?

- A. AP does not need to go online again
- B. AP needs to go online again
- C. Users do not need to go online again
- D. Users need to go online again

Correct Answer: AC

QUESTION 2

Which are the methods to prevent bops on a multi-MPP Mesh network? (Multiple Choice)

- A. STP
- B. MSTP
- C. TTL D. Repeated frame sequence number check

Correct Answer: AB

QUESTION 3

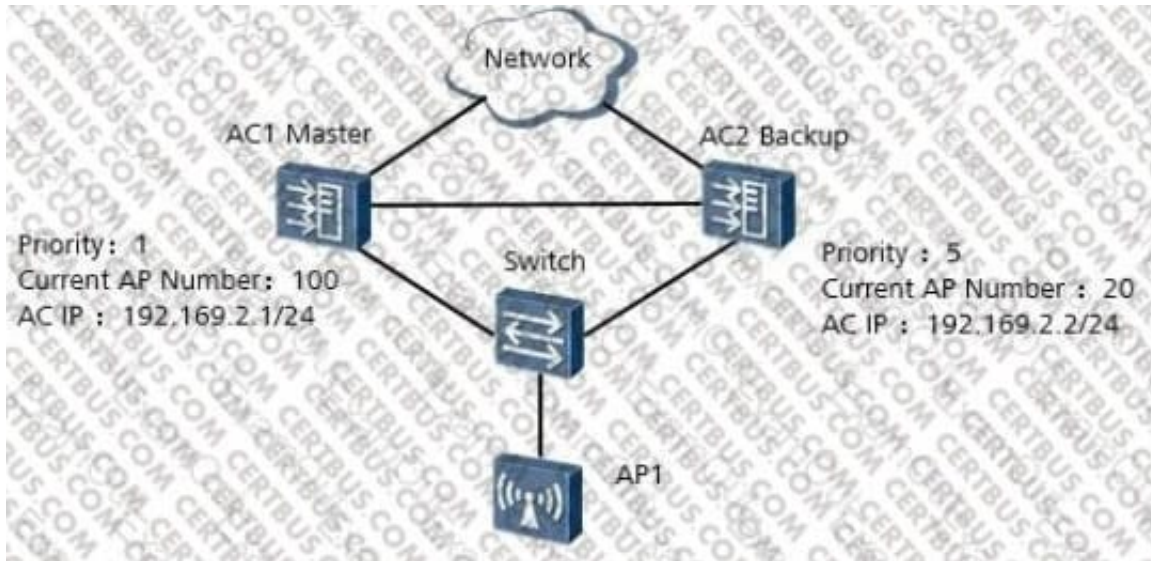
When a neighbor passively detects, what information does the legal AP need to collect and report to the AC?

- A. Interference between APs
- B. Interference from illegal APs
- C. Interference from non-Wi-Fi devices
- D. Infrared interference

Correct Answer: ABC

QUESTION 4

In the dual-link HSB networking diagram shown in the figure, API is allowed to connect to both ACs. Which AC will API connect to?



- A. AC1
- B. AC2
- C. Either of them
- D. None of them

Correct Answer: A

QUESTION 5

In long-distance point-to-point communication over WLAN, if a stable communication link is to be maintained, what percentage of the first Fresnel area can't be blocked?

- A. 0.2
- B. 0.4
- C. 0.5
- D. 0.6

Correct Answer: B

[H12-321 PDF Dumps](#)

[H12-321 Practice Test](#)

[H12-321 Braindumps](#)