



EADA105^{Q&As}

ArcGIS Desktop Associate 10.5

Pass Esri EADA105 Exam with 100% Guarantee

Free Download Real Questions & Answers **PDF** and **VCE** file from:

<https://www.passapply.com/eada105.html>

100% Passing Guarantee
100% Money Back Assurance

Following Questions and Answers are all new published by Esri Official Exam Center

- ⚙ **Instant Download** After Purchase
- ⚙ **100% Money Back** Guarantee
- ⚙ **365 Days** Free Update
- ⚙ **800,000+** Satisfied Customers





QUESTION 1

What should be used to make sure that an .mxd file can be opened in a previous version of ArcGIS?

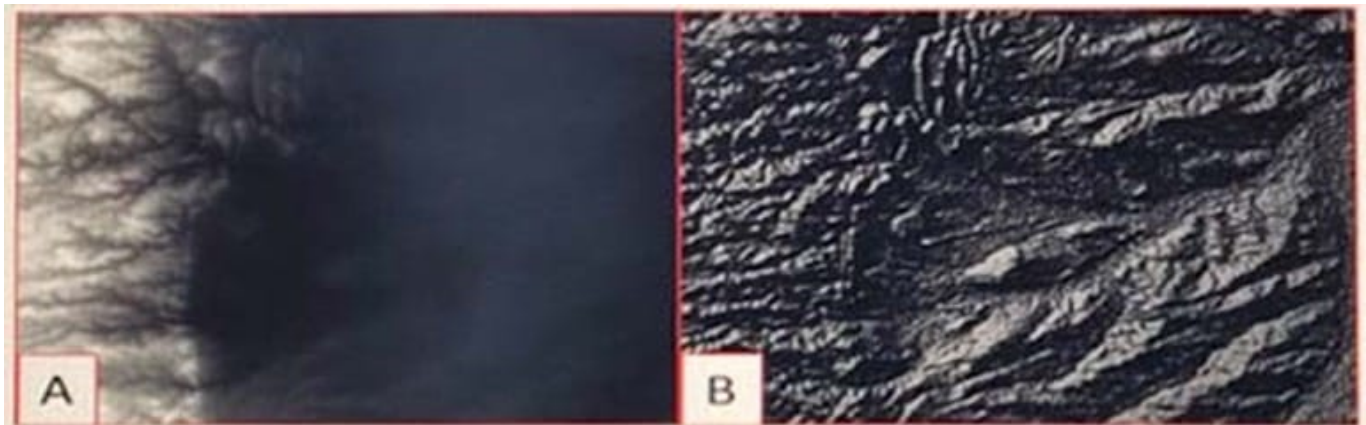
- A. Save As command
- B. Create Map Package
- C. Export Map
- D. Save a Copy command

Correct Answer: A

Reference: <http://webcache.googleusercontent.com/search?q=cache:Yjzi6cSqP8IJ:desktop.arcgis.com/en/arcmap/10.3/map/working-with-arcmap/saving-amap.htm&client=opera&hl=en&gl=pk&strip=1&vwsr=0>

QUESTION 2

Refer to the exhibit.



Which raster function will display image A as image B?

- A. Shaded Relief
- B. Slope
- C. Hillshade
- D. Aspect

Correct Answer: D

Reference: <http://desktop.arcgis.com/en/arcmap/10.3/manage-data/raster-and-images/aspect-function.htm>

QUESTION 3



A GIS administrator wants to share map documents with other staff who have access to the administrator\\s drive. The administrator does NOT want staff to have to copy the data to their local drives to open the map documents. The administrator must change the local system paths to UNIC paths in all map documents.

How should the GIS administrator accomplish the task?

- A. Use a Python script to find and replace workspace paths.
- B. In ArcCatalog, rename the databases and data folders.
- C. In ArcMap, Save A Copy to a new location.
- D. From the Contents pane, click the red exclamation points to fix the data sources.

Correct Answer: C

QUESTION 4

A GIS analyst creates a model that includes a Python script to process non-spatial data for use in several of the model steps. The model needs to be shared with online users who must be able to modify, add additional data, and execute the model locally on their own desktops.

How should the GIS analyst share the script and model?

- A. Web tool
- B. Geoprocessing package
- C. Project package
- D. Python toolbox

Correct Answer: B

Reference: <https://pro.arcgis.com/en/pro-app/help/analysis/networks/arcgis-online-services.htm>

QUESTION 5

How can an ArcGIS Pro user display 2D polygons with height in 3D?

- A. Use a single attribute or build an expression to extrude the polygons
- B. Use the z-mode in the Edit tab to add z-values to the polygons
- C. Add the features as a preset layer to a scene to display in 3D
- D. Add the features to a 2D map and convert the map to a 3D scene

Correct Answer: D

Reference: <https://communityhub.esriuk.com/geoxchange/2016/11/11/make-your-2d-data-look-3d-witharcgis-pro>



VCE & PDF

PassApply.com

<https://www.passapply.com/eada105.html>

2024 Latest passapply EADA105 PDF and VCE dumps Download

[Latest EADA105 Dumps](#)

[EADA105 Practice Test](#)

[EADA105 Braindumps](#)