



# EADA105<sup>Q&As</sup>

ArcGIS Desktop Associate 10.5

## Pass Esri EADA105 Exam with 100% Guarantee

Free Download Real Questions & Answers **PDF** and **VCE** file from:

<https://www.passapply.com/eada105.html>

100% Passing Guarantee  
100% Money Back Assurance

Following Questions and Answers are all new published by Esri Official Exam Center

-  **Instant Download** After Purchase
-  **100% Money Back** Guarantee
-  **365 Days** Free Update
-  **800,000+** Satisfied Customers





### QUESTION 1

In a scene in ArcGIS Pro, a user finds that a streets layer draws elevated at a distance above the ground, instead of draped over the ground surface.

How should the user fix the problem and place the streets layer on the ground?

- A. Project tab > Options > Map and Scene tab
- B. Scene Properties > Elevation Surface tab
- C. Scene Properties > Coordinate Systems tab
- D. Layer Properties > Elevation tab

Correct Answer: D

---

### QUESTION 2

An ArcGIS user must store 32000 multi-spectral images that must be presented to users as pre-classified.

Which storage format is most appropriate to prevent image duplication?

- A. Terrain dataset
- B. Mosaic dataset
- C. LAS dataset
- D. Raster dataset

Correct Answer: B

---

### QUESTION 3

In ArcMap, how can a user project a layer without using a geoprocessing tool?

- A. Right-click a file geodatabase > Import feature class (multiple)
- B. Set the coordinate system of the data frame > Export Data with the coordinate system of the source data
- C. Right-click a feature dataset with the correct coordinate system > Import feature class (Single)
- D. Set the coordinate system of the data frame > Export Data with the coordinate system of the data frame

Correct Answer: C

---

### QUESTION 4



A GIS analyst has a point file that represents individual buildings with the following fields.

1.

Street Number

2.

Street Name

3.

Feature ID

4.

SHAPE

Which address locator style should be used with this type of reference data?

A. Single House

B. Dual Range

C. One Range

D. Street Names

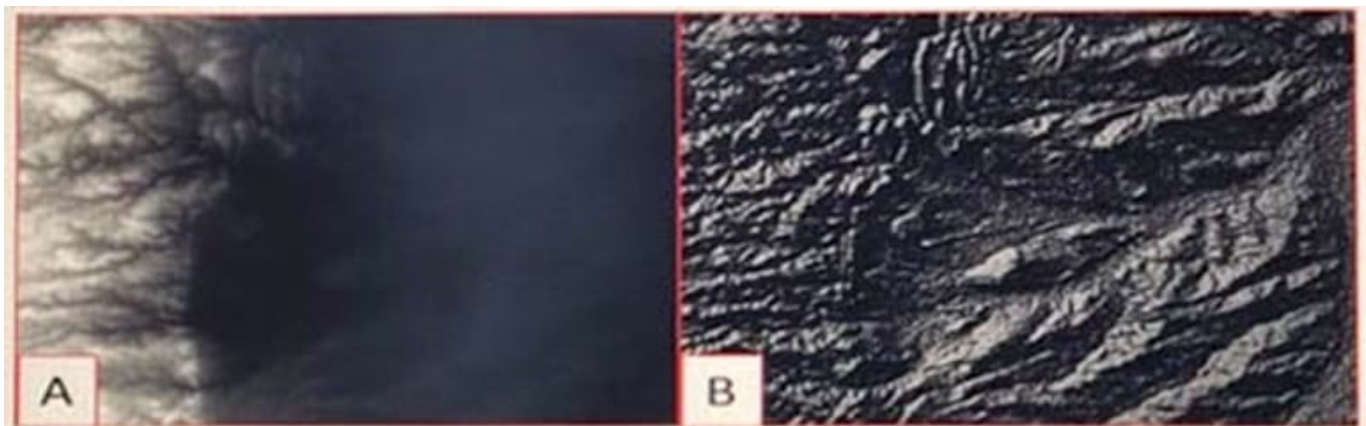
Correct Answer: B

Reference: <http://desktop.arcgis.com/en/arcmap/10.3/guide-books/geocoding/commonly-used-addresslocator-styles.htm>

---

## QUESTION 5

Refer to the exhibit.



Which raster function will display image A as image B?

A. Shaded Relief



B. Slope

C. Hillshade

D. Aspect

Correct Answer: D

Reference: <http://desktop.arcgis.com/en/arcmap/10.3/manage-data/raster-and-images/aspect-function.htm>

[EADA105 PDF Dumps](#)

[EADA105 VCE Dumps](#)

[EADA105 Braindumps](#)