



DP-200^{Q&As}

Implementing an Azure Data Solution

Pass Microsoft DP-200 Exam with 100% Guarantee

Free Download Real Questions & Answers **PDF** and **VCE** file from:

<https://www.passapply.com/dp-200.html>

100% Passing Guarantee
100% Money Back Assurance

Following Questions and Answers are all new published by Microsoft
Official Exam Center

-  **Instant Download** After Purchase
-  **100% Money Back** Guarantee
-  **365 Days** Free Update
-  **800,000+** Satisfied Customers





QUESTION 1

Contoso, Ltd. plans to configure existing applications to use Azure SQL Database.

When security-related operations occur, the security team must be informed.

You need to configure Azure Monitor while minimizing administrative effort.

Which three actions should you perform? Each correct answer presents part of the solution.

NOTE: Each correct selection is worth one point.

- A. Create a new action group to email alerts@contoso.com.
- B. Use alerts@contoso.com as an alert email address.
- C. Use all security operations as a condition.
- D. Use all Azure SQL Database servers as a resource.
- E. Query audit log entries as a condition.

Correct Answer: ACD

References: <https://docs.microsoft.com/en-us/azure/azure-monitor/platform/alerts-action-rules>

QUESTION 2

You develop a data ingestion process that will import data to a Microsoft Azure SQL Data Warehouse. The data to be ingested resides in parquet files stored in an Azure Data Lake Gen 2 storage account.

You need to load the data from the Azure Data Lake Gen 2 storage account into the Azure SQL Data Warehouse.

Solution:

1.

Create an external data source pointing to the Azure Data Lake Gen 2 storage account

2.

Create an external file format and external table using the external data source

3.

Load the data using the CREATE TABLE AS SELECT statement

Does the solution meet the goal?

- A. Yes
- B. No



Correct Answer: A

You need to create an external file format and external table using the external data source. You load the data using the CREATE TABLE AS SELECT statement.

References: <https://docs.microsoft.com/en-us/azure/sql-data-warehouse/sql-data-warehouse-load-from-azure-data-lake-store>

QUESTION 3

You have an Azure Blob storage account.

Developers report that an HTTP 403 (Forbidden) error is generated when a client application attempts to access the storage account. You cannot see the error messages in Azure Monitor.

What is a possible cause of the error?

- A. The client application is using an expired shared access signature (SAS) when it sends a storage request.
- B. The client application deleted, and then immediately recreated a blob container that has the same name.
- C. The client application attempted to use a shared access signature (SAS) that did not have the necessary permissions.
- D. The client application attempted to use a blob that does not exist in the storage service.

Correct Answer: C

Reference: <https://docs.microsoft.com/en-us/rest/api/storageservices/sas-error-codes>

QUESTION 4

SIMULATION Use the following login credentials as needed:



Azure Username: xxxxx Azure Password: xxxxx The following information is for technical support purposes only:

Lab Instance: 10277521

You plan to create multiple pipelines in a new Azure Data Factory V2.

You need to create the data factory, and then create a scheduled trigger for the planned pipelines. The trigger must execute every two hours starting at 24:00:00.

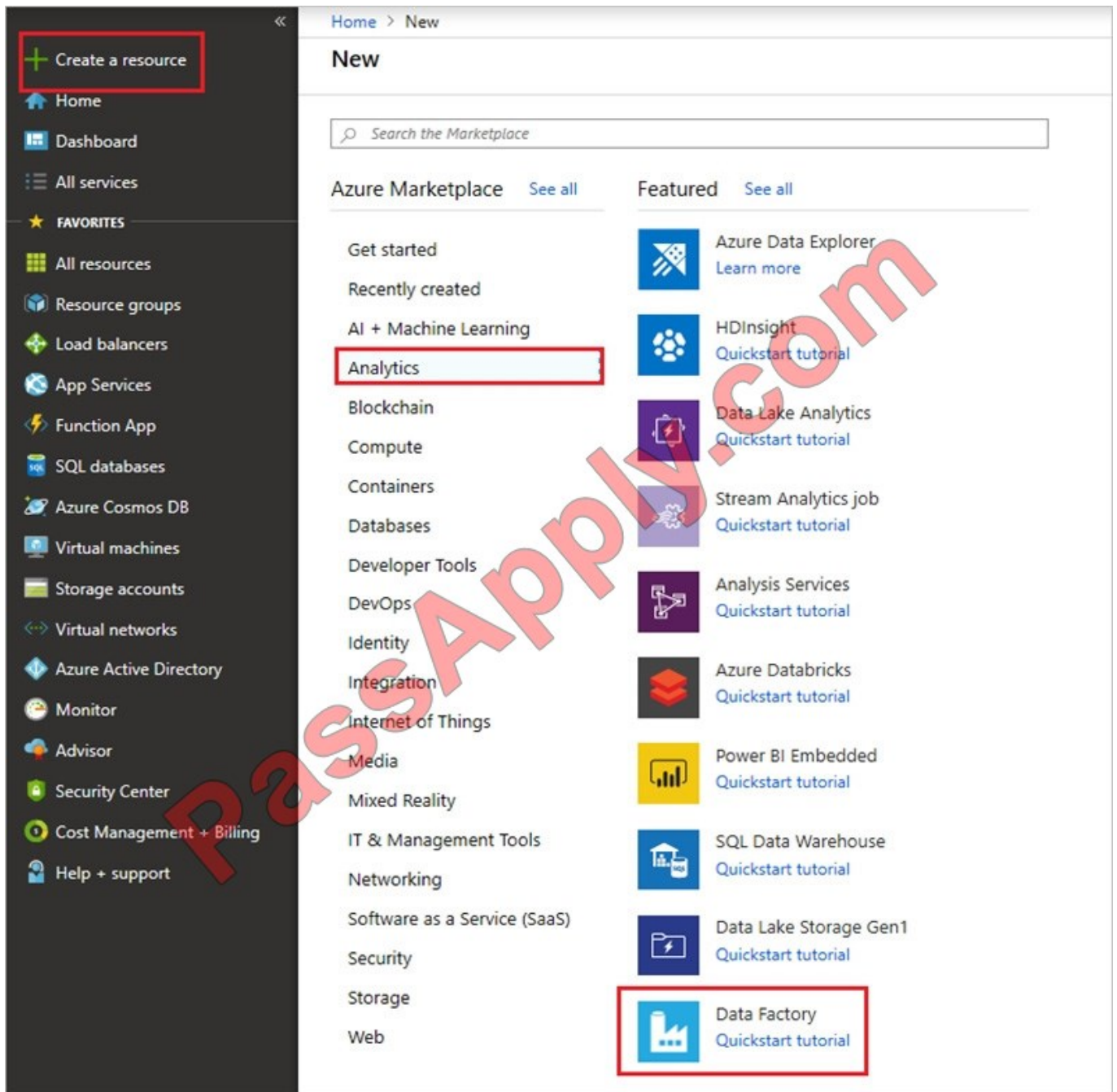
To complete this task, sign in to the Azure portal.

Correct Answer: See the below.

Explanation:

Step 1: Create a new Azure Data Factory V2

1. Go to the Azure portal.



2. Select Create a resource on the left menu, select Analytics, and then select Data Factory. 4. On the New data factory page, enter a name.

5.

For Subscription, select your Azure subscription in which you want to create the data factory.

6.

For Resource Group, use one of the following steps:

Select Use existing, and select an existing resource group from the list.

Select Create new, and enter the name of a resource group.



7.

For Version, select V2.

8.

For Location, select the location for the data factory.

9.

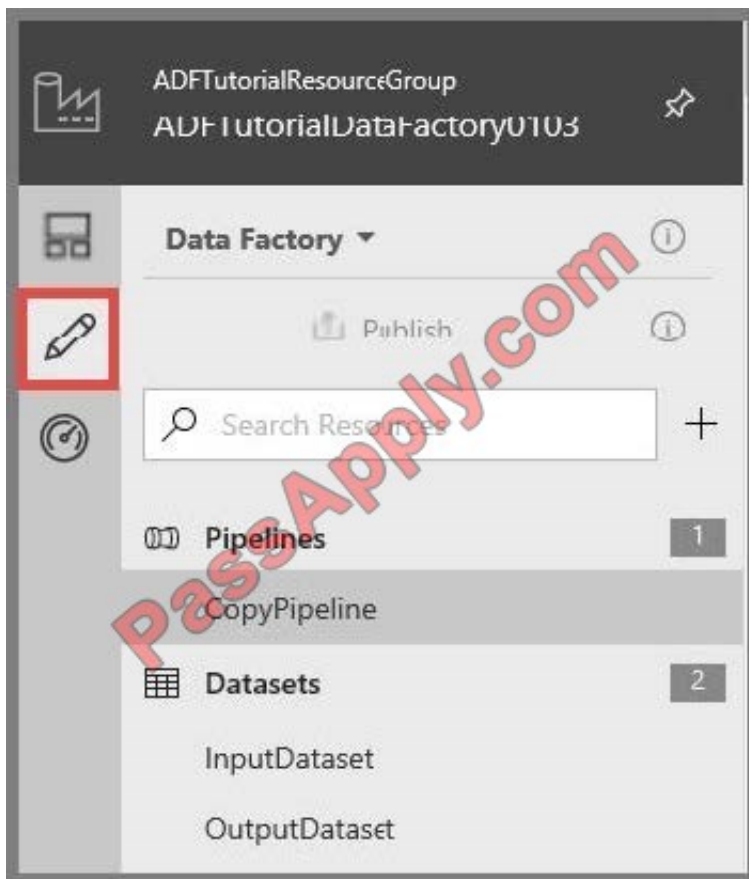
Select Create.

10.

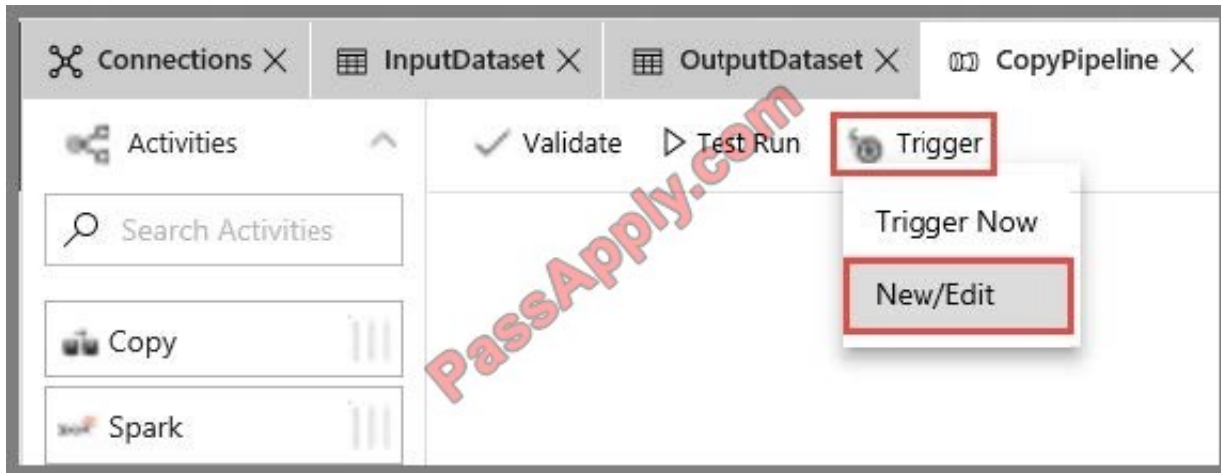
After the creation is complete, you see the Data Factory page.

Step 2: Create a schedule trigger for the Data Factory

1. Select the Data Factory you created, and switch to the Edit tab.



2. Click Trigger on the menu, and click New/Edit.



3.

In the Add Triggers page, click Choose trigger..., and click New.

4.

In the New Trigger page, do the following steps:



a.

Confirm that Schedule is selected for Type.

b.

Specify the start datetime of the trigger for Start Date (UTC) to: 24:00:00

c.

Specify Recurrence for the trigger. Select Every Hour, and enter 2 in the text box.



Type *

Schedule Tumbling Window

Start Date (UTC) * (i)

01/03/2018, 10:54 PM

Recurrence * (i)

Every Minute Every 1 Minute(s)

End * (i)

1 On Date

End On (UTC) * (i)

01/03/2018, 11:10 PM

January 2018

Sun	Mon	Tue	Wed	Thu	Fri	Sat
31	1	2	3	4	5	6
7	8	9	10	11	12	13
14	15	16	17	18	19	20
21	22	23	24	25	26	27
28	29	30	31	1	2	3
4	5	6	7	8	9	10

Next

End 2 11 : 10 PM

3 Cancel Apply

5. In the New Trigger window, check the Activated option, and click Next.

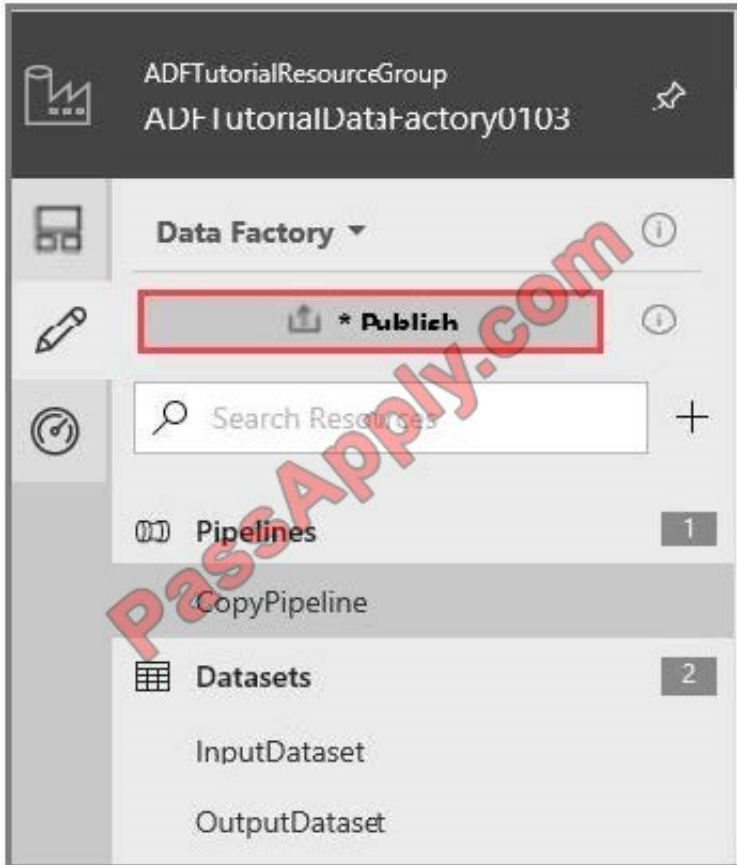
6.



In the New Trigger page, review the warning message, and click Finish.

7.

Click Publish to publish changes to Data Factory. Until you publish changes to Data Factory, the trigger does not start triggering the pipeline runs.



References: <https://docs.microsoft.com/en-us/azure/data-factory/quickstart-create-data-factory-portal>

<https://docs.microsoft.com/en-us/azure/data-factory/how-to-create-schedule-trigger>

QUESTION 5

You have an Azure Storage account that contains 100 GB of files. The files contain text and numerical values. 75% of the rows contain description data that has an average length of 1.1 MB.

You plan to copy the data from the storage account to an Azure SQL data warehouse.

You need to prepare the files to ensure that the data copies quickly.

Solution: You copy the files to a table that has a columnstore index.

Does this meet the goal?

A. Yes



B. No

Correct Answer: B

Instead modify the files to ensure that each row is less than 1 MB.

References: <https://docs.microsoft.com/en-us/azure/sql-data-warehouse/guidance-for-loading-data>

[DP-200 PDF Dumps](#)

[DP-200 Exam Questions](#)

[DP-200 Braindumps](#)



To Read the [Whole Q&As](#), please purchase the [Complete Version](#) from [Our website](#).

Try our product !

100% Guaranteed Success
100% Money Back Guarantee
365 Days Free Update
Instant Download After Purchase
24x7 Customer Support
Average 99.9% Success Rate
More than 800,000 Satisfied Customers Worldwide
Multi-Platform capabilities - [Windows](#), [Mac](#), [Android](#), [iPhone](#), [iPod](#), [iPad](#), [Kindle](#)

We provide exam PDF and VCE of Cisco, Microsoft, IBM, CompTIA, Oracle and other IT Certifications. You can view Vendor list of All Certification Exams offered:

<https://www.passapply.com/allproducts>

Need Help

Please provide as much detail as possible so we can best assist you.
To update a previously submitted ticket:



 <p>One Year Free Update Free update is available within One Year after your purchase. After One Year, you will get 50% discounts for updating. And we are proud to boast a 24/7 efficient Customer Support system via Email.</p>	 <p>Money Back Guarantee To ensure that you are spending on quality products, we provide 100% money back guarantee for 30 days from the date of purchase.</p>	 <p>Security & Privacy We respect customer privacy. We use McAfee's security service to provide you with utmost security for your personal information & peace of mind.</p>
---	---	--

Any charges made through this site will appear as Global Simulators Limited.
All trademarks are the property of their respective owners.
Copyright © passapply, All Rights Reserved.