



DES-6321^{Q&As}

Specialist - Implementation Engineer - VxRail Appliance Exam

Pass EMC DES-6321 Exam with 100% Guarantee

Free Download Real Questions & Answers **PDF** and **VCE** file from:

<https://www.passapply.com/des-6321.html>

100% Passing Guarantee
100% Money Back Assurance

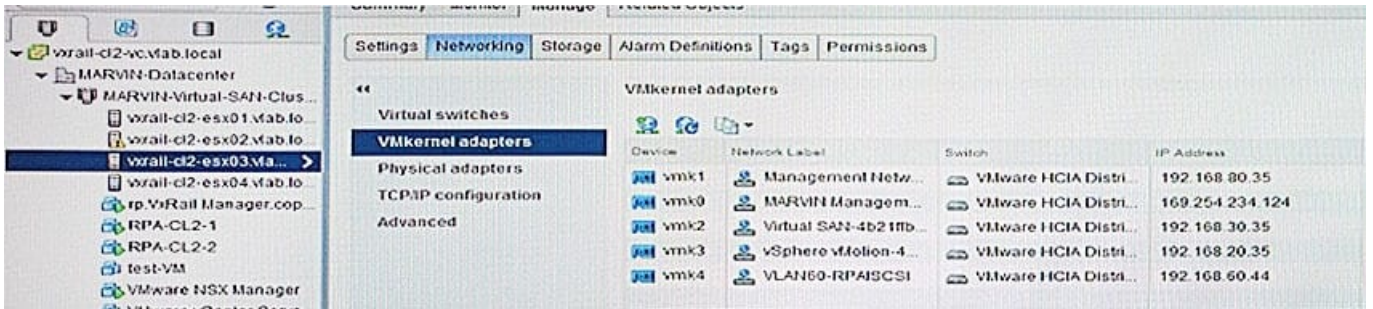
Following Questions and Answers are all new published by EMC
Official Exam Center

-  **Instant Download** After Purchase
-  **100% Money Back** Guarantee
-  **365 Days** Free Update
-  **800,000+** Satisfied Customers





QUESTION 1



Based on the exhibit, what is the correct IP address to use when resetting a G Series node with the reset script?

- A. 169.254.234.124
- B. 192.168.20.35
- C. 192.168.30.35
- D. 192.168.80.35

Correct Answer: A

QUESTION 2

A system administrator wants to generate and download a log bundle from their VxRail environment. What is the correct sequence of the REST API calls accomplish this?

Select and Place:

GET /requests/<Request_ID>	Step 1
POST /support/logs	Step 2
GET /support/logs/<Log_ID>	Step 3
GET /support/logs/<Log_ID>/download	Step 4

Correct Answer:



	GET /requests/<Request_ID>
	POST /support/logs
	GET /support/logs/<Log_ID>
	GET /support/logs/<Log_ID>/download

QUESTION 3

DRAG DROP

What is the correct order of steps to install a Dell PowerEdge-based VxRail cluster?

Select and Place:

Answer area

Configure iDRAC for remote management of nodes	Step 1
Cable ToR switches to VxRail nodes	Step 2
Power on VxRail nodes	Step 3
Mount the VxRail nodes into the customer provided rack	Step 4
Connect to the customer network	Step 5

Correct Answer:



Answer area

- Mount the VxRail nodes into the customer provided rack
- Cable ToR switches to VxRail nodes
- Configure iDRAC for remote management of nodes
- Power on VxRail nodes
- Connect to the customer network

QUESTION 4

You are asked to cable up a VxRail G Series cluster to a redundant pair of 1/10G switches. What is the cabling best practice for this configuration?

- A. Cable ports 1 and 2 to oneswitch. Cable ports 3 and 4 to the other switch.
- B. Cable ports 1 and 2 to one switch. Cable ports 3 and 4 to the other switch. Cable BMC from node 1 and 2 to one switch. Cable BMC from node 3 and 4 to the other switch.
- C. Cable ports 1 and 3 to one switch. Cable ports 2 and 4 to the other switch.
- D. Cable ports 1 and 3 to one switch. Cable ports 2 and 4 to the other switch. Cable BMC from node 1 and 3 to one switch. Cable BMC from node 2 and 4 to the other switch.

Correct Answer: D

QUESTION 5

In which VxRail node model is the iDRAC `NIC Selection Setting` set to LOM1?

- A. S570
- B. E560
- C. G410
- D. G560

Correct Answer: BD