



DES-5221^{Q&As}

Specialist Implementation Engineer Data Center Networking Exam

Pass EMC DES-5221 Exam with 100% Guarantee

Free Download Real Questions & Answers **PDF** and **VCE** file from:

<https://www.passapply.com/des-5221.html>

100% Passing Guarantee
100% Money Back Assurance

Following Questions and Answers are all new published by EMC
Official Exam Center

- ⚙️ **Instant Download** After Purchase
- ⚙️ **100% Money Back** Guarantee
- ⚙️ **365 Days** Free Update
- ⚙️ **800,000+** Satisfied Customers





QUESTION 1

When creating an alias in OS10 what is the maximum number of variable input parameters that can be defined?

- A. 6
- B. 9
- C. 3
- D. 12

Correct Answer: B

Reference: https://topics-cdn.dell.com/pdf/networking-s5148f-on_connectivity-guide4_en-us.pdf page 51

QUESTION 2

A network administrator is designing a Layer 2 topology and requires separate spanning-tree roots to avoid having a given port blocked for all instances. Which spanning-tree protocols will meet this need?

- A. STP and RSTP
- B. RSTP-PV and MSTP
- C. STP and RSTP-PV
- D. RSTP and MSTP

Correct Answer: B

QUESTION 3

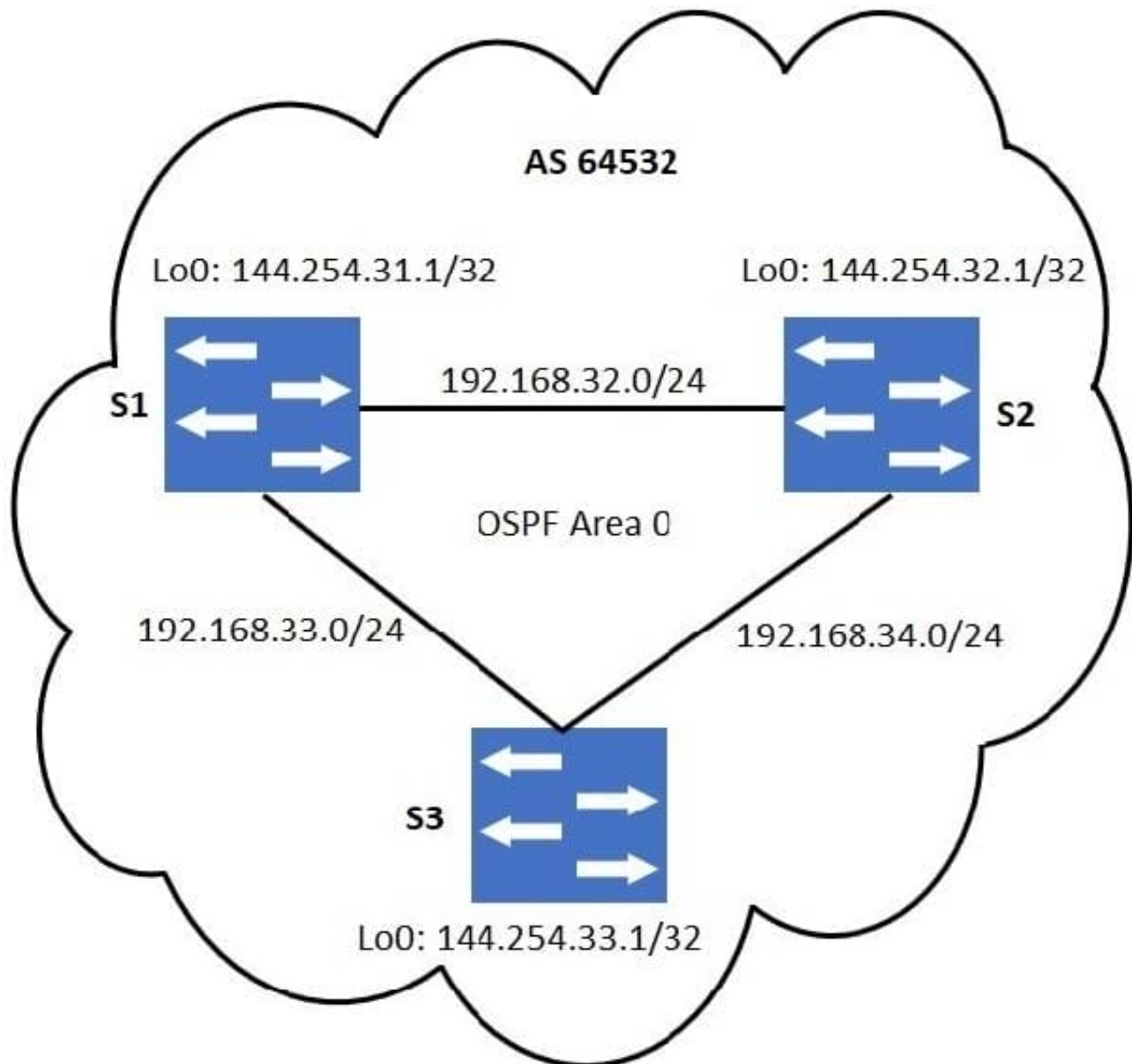
Which command shows whether a LAG protocol is static or dynamic on a Dell EMC Networking OS10 switch?

- A. show lacp neighbor
- B. show running-configuration lacp
- C. show interface port-channel summary
- D. show port-channel summary

Correct Answer: D

Reference: https://topics-cdn.dell.com/pdf/force10-s4048-on_reference-guide6_en-us.pdf

QUESTION 4



Refer to the exhibit.

No static routing has been configured. For iBGP loopback-based peering, which statement is correct?

- A. It is not necessary for the routing table on S1 to have an entry for the loopback network of S3.
- B. S1 should have the Loopback network of S3 in its routing table for loopback-based peering.
- C. For iBGP peering, physical interface addresses must be used.
- D. A static route on S1 to 144.254.32.1/32 will eliminate the need for loopback-based peering with S3.

Correct Answer: B

QUESTION 5



Which LSA type contains information about routes redistributed into OSPF?

- A. 3
- B. 10
- C. 5
- D. 8

Correct Answer: C

[Latest DES-5221 Dumps](#)

[DES-5221 VCE Dumps](#)

[DES-5221 Braindumps](#)