



DES-5221^{Q&As}

Specialist Implementation Engineer Data Center Networking Exam

Pass EMC DES-5221 Exam with 100% Guarantee

Free Download Real Questions & Answers **PDF** and **VCE** file from:

<https://www.passapply.com/des-5221.html>

100% Passing Guarantee
100% Money Back Assurance

Following Questions and Answers are all new published by EMC
Official Exam Center

-  **Instant Download** After Purchase
-  **100% Money Back** Guarantee
-  **365 Days** Free Update
-  **800,000+** Satisfied Customers





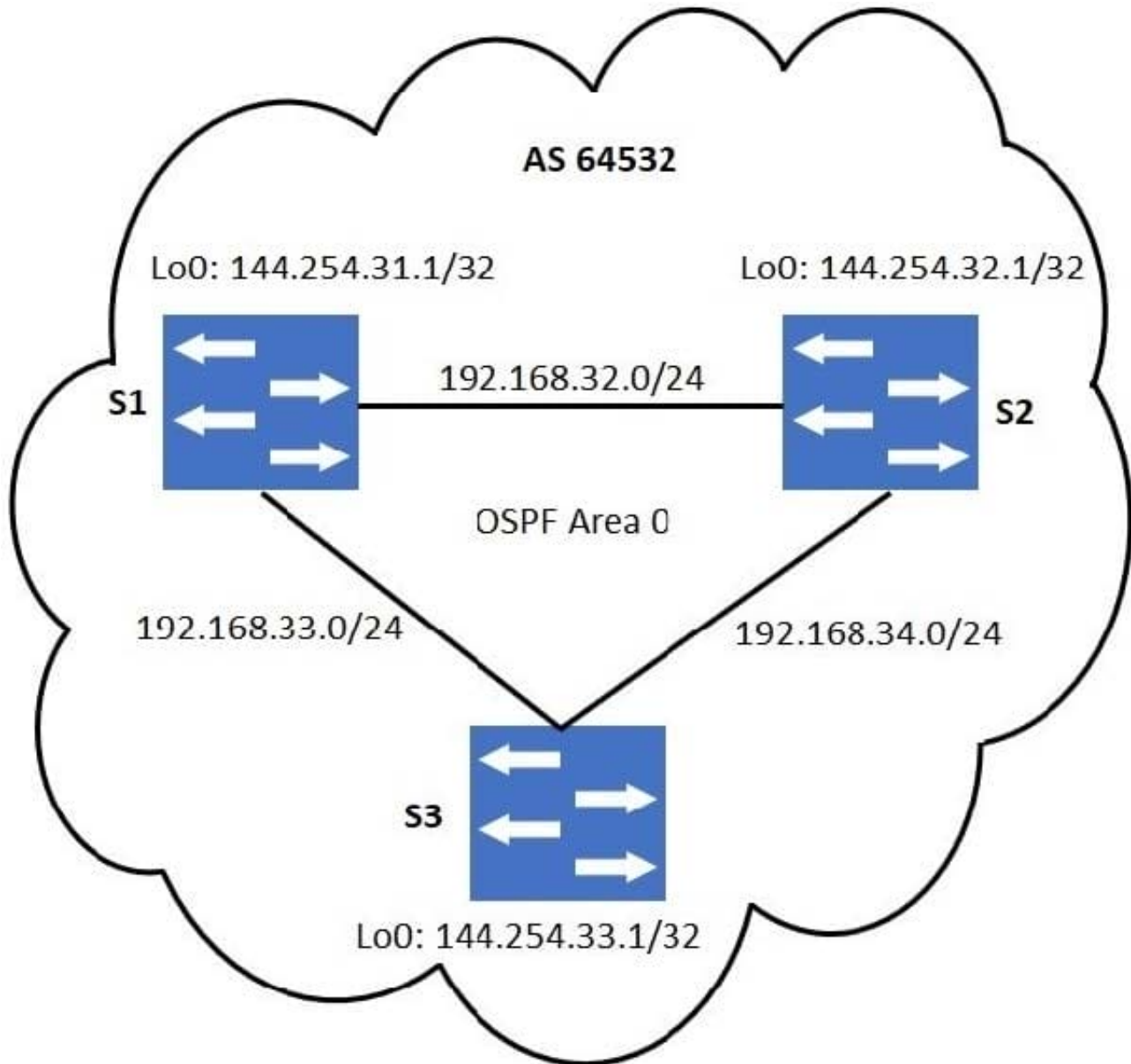
QUESTION 1

What is the size of the VLAN tag in an Ethernet frame?

- A. 4 bytes
- B. 8 bytes
- C. 1 byte
- D. 2 bytes

Correct Answer: A

QUESTION 2



Refer to the exhibit.

No static routing has been configured. For iBGP loopback-based peering, which statement is correct?

- A. It is not necessary for the routing table on S1 to have an entry for the loopback network of S3.
- B. S1 should have the Loopback network of S3 in its routing table for loopback-based peering.
- C. For iBGP peering, physical interface addresses must be used.
- D. A static route on S1 to 144.254.32.1/32 will eliminate the need for loopback-based peering with S3.

Correct Answer: B

QUESTION 3



A network administrator is designing a Layer 2 topology and requires separate spanning-tree roots to avoid having a given port blocked for all instances. Which spanning-tree protocols will meet this need?

- A. STP and RSTP
- B. RSTP-PV and MSTP
- C. STP and RSTP-PV
- D. RSTP and MSTP

Correct Answer: B

QUESTION 4

What is the function of the authentication service?

- A. Validates the user identity
- B. Determines switch management commands
- C. Validates switch order
- D. Determines which services the user is enabled to access

Correct Answer: A

QUESTION 5

What is the maximum number of LLDP neighbors supported per system with OS10?

- A. 250
- B. 256
- C. 384
- D. 512

Correct Answer: A

[DES-5221 PDF Dumps](#)

[DES-5221 Practice Test](#)

[DES-5221 Study Guide](#)