



DES-1241^{Q&As}

Specialist - Platform Engineer, PowerStore

Pass Dell DES-1241 Exam with 100% Guarantee

Free Download Real Questions & Answers **PDF** and **VCE** file from:

<https://www.passapply.com/des-1241.html>

100% Passing Guarantee
100% Money Back Assurance

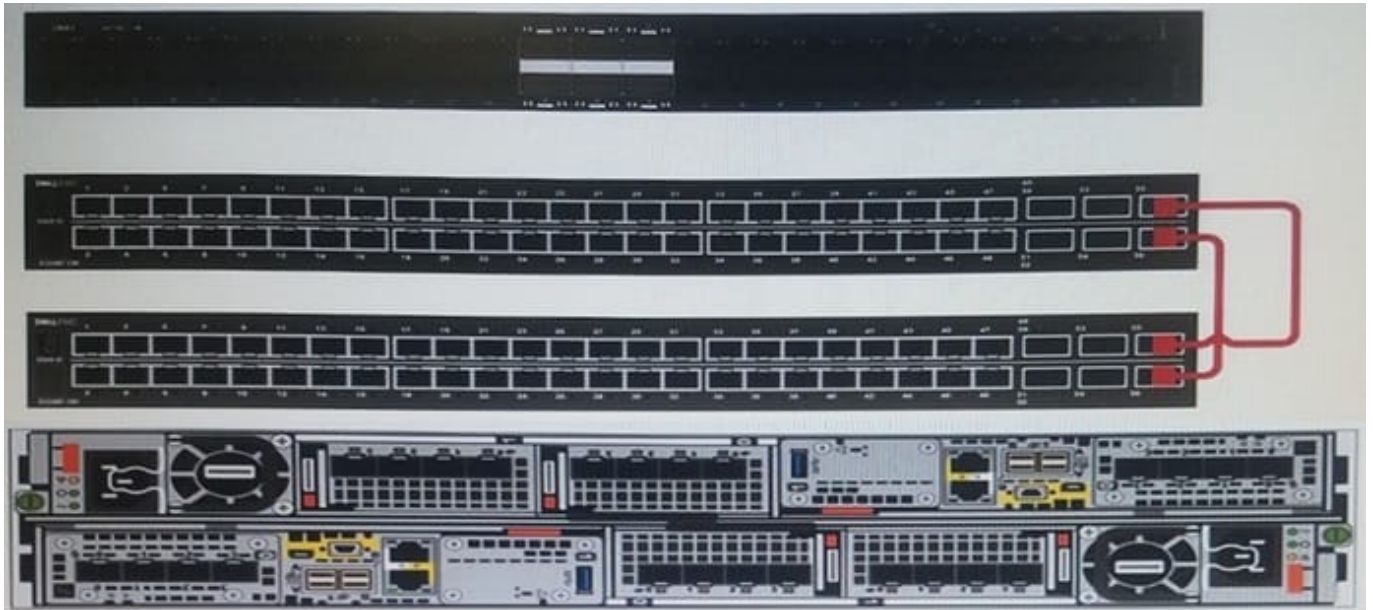
Following Questions and Answers are all new published by Dell Official Exam Center

-  **Instant Download** After Purchase
-  **100% Money Back** Guarantee
-  **365 Days** Free Update
-  **800,000+** Satisfied Customers





QUESTION 1



Refer to the exhibit.

What type of cable is used for the ToR switch configuration shown for the S5248F-ON switches?

- A. 10 GigE Cat 6 Ethernet RJ-45
- B. 25 GigE Twinax
- C. 100 GigE QSFP28
- D. 10 GigE SFP optical cable

Correct Answer: C

Reference: <https://www.dell.com/resources/en-us/asset/technical-guides-support-information/solutions/h18242-ready-stack-powerstore-dg.pdf?dgc=SMandcid=170850andlid=spr3492306896andlinkId=93885839>

QUESTION 2

What describes Dell EMC PowerStore heat dissipation?

- A. X systems have higher heat dissipation specifics than T systems
- B. Higher model numbered systems have lower heat dissipation specifications than lower model numbered systems
- C. T systems have higher heat dissipation specifics than X systems
- D. Lower model numbered systems have lower heat dissipation specifications than higher model numbered systems

Correct Answer: A



QUESTION 3

What is the last step when adding a drive to a Dell EMC PowerStore system?

- A. Verify the new drive is seen
- B. Add the drive to the pool
- C. Backup the keystore
- D. Zero the drive

Correct Answer: A

Reference: <https://www.dell.com/support/manuals/pk/en/pkbsd1/powerstore-9000t/pwrstr-isg/install-a-25-drive?guid=guid-bddae51e-a561-4e84-bc0a-c2e99a43f033&lang=en-us>

QUESTION 4



Refer to the exhibit.

A Storage Administrator noticed a drive LED blinking blue. What does this indicate?

- A. Is faulted
- B. Access activity
- C. Power up
- D. Identification is on



Correct Answer: C

QUESTION 5

Which component is hot-swappable?

- A. SFP
- B. Fan
- C. BBU
- D. Expansion IO module

Correct Answer: D

Reference: https://topics-cdn.dell.com/pdf/pwrstr-hwg_en-us.pdf (15)

[DES-1241 PDF Dumps](#)

[DES-1241 VCE Dumps](#)

[DES-1241 Study Guide](#)