



# DCPPE-200<sup>Q&As</sup>

Dell PowerEdge Professional Exam

**Pass Dell DCPPE-200 Exam with 100% Guarantee**

Free Download Real Questions & Answers **PDF** and **VCE** file from:

<https://www.passapply.com/dcppe-200.html>

100% Passing Guarantee  
100% Money Back Assurance

Following Questions and Answers are all new published by Dell Official Exam Center

-  **Instant Download** After Purchase
-  **100% Money Back** Guarantee
-  **365 Days** Free Update
-  **800,000+** Satisfied Customers





### QUESTION 1

An engineer has connected a monitor, keyboard, and mouse to a VRTX chassis. The engineer is unable to see or control the first blade.

What must the engineer do to control the first blade with a connected monitor, keyboard, and mouse?

- A. Map the KVM to the first blade in the Front Panel menu of the CMC.
- B. Plug the monitor, keyboard, and mouse into the back of the chassis.
- C. Enable the KVM for the chassis and navigate to the first blade.
- D. Reseat the module that manages access to the monitor, keyboard and mouse.

Correct Answer: C

---

### QUESTION 2

An engineer needs to re-purpose the storage of the chassis. Data must NOT be lost when a drive fails. The configuration needs to allow for redundancy with the maximum amount of usable space.

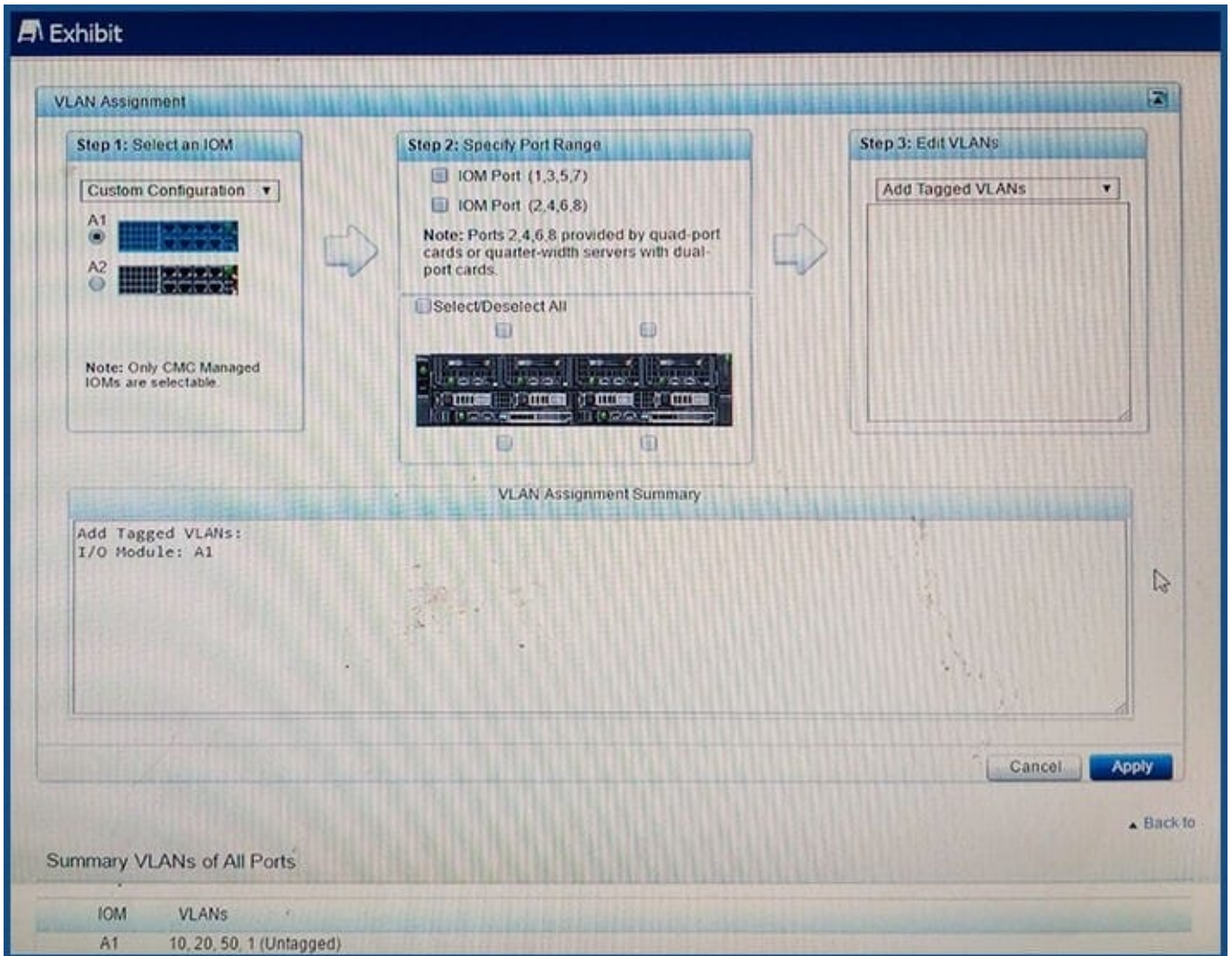
What should the engineer create to perform this task?

- A. RAID 60
- B. RAID 50
- C. RAID 5
- D. RAID 6

Correct Answer: C

---

### QUESTION 3



Refer to the exhibit.

An engineer is configuring an I/O Aggregator (IOA) for use on a network that has VLANs. The IOA in SLOT A2 is NOT being used currently.

All blades appear to communicate on the network EXCEPT for blades 1b and 1d.

What does the engineer need to do so that blades 1b and 1d can communicate?

- A. Install additional network cables for the IOA in A1
- B. Add IOM Ports 2, 4,6, and 8 to the VLANs
- C. Set VLANs 10, 20, and 50 to untagged for all ports
- D. Configure IOA in A2 for all blades.

Correct Answer: B



#### QUESTION 4

An engineer is deploying a new server node into an existing chassis for a virtualization cluster. The existing cluster nodes have many modified BIOS settings to meet workload needs.

How should the engineer quickly deploy the new server node with matching BIOS settings?

- A. Use System Setup to configure dynamic profile settings based on workload.
- B. Use the iDRAC GUI to replicate from an existing server profile.
- C. Use the CMC Server Profiles to clone an existing server profile.
- D. Use the Lifecycle Controller to mirror a cluster member profile.

Correct Answer: A

---

#### QUESTION 5

A customer has five VRTXs in a chassis group that they need to disband. The engineer disbands the chassis group from the group leader, but a networking interruption prevents two of the VRTXs from getting the signal to leave the group.

What should the engineer do to finish disbanding the chassis group?

- A. Remove the remaining members from the group leader's Remove Members list
- B. Recreate the group from the group leader and disband it again
- C. Remove the group association from the group members individually
- D. Reboot the CMCs of the remaining members

Correct Answer: C

[DCPPE-200 VCE Dumps](#)

[DCPPE-200 Study Guide](#)

[DCPPE-200 Exam Questions](#)