



CEH-001^{Q&As}

Certified Ethical Hacker (CEH)

Pass GAQM CEH-001 Exam with 100% Guarantee

Free Download Real Questions & Answers **PDF** and **VCE** file from:

<https://www.passapply.com/ceh-001.html>

100% Passing Guarantee
100% Money Back Assurance

Following Questions and Answers are all new published by GAQM
Official Exam Center

- ⚙️ **Instant Download** After Purchase
- ⚙️ **100% Money Back** Guarantee
- ⚙️ **365 Days** Free Update
- ⚙️ **800,000+** Satisfied Customers





QUESTION 1

Which of the following commands runs snort in packet logger mode?

A. `./snort -dev -h ./log`

B. `./snort -dev -l ./log`

C. `./snort -dev -o ./log`

D. `./snort -dev -p ./log`

Correct Answer: B

QUESTION 2

You perform the above traceroute and notice that hops 19 and 20 both show the same IP address.



```
1 172.16.1.254 (172.16.1.254) 0.724 ms 3.285 ms 0.613 ms
2 ip68-98-176-1.nv.nv.cox.net (68.98.176.1) 12.169 ms 14.958 ms 13.416 ms
3 ip68-98-176-1.nv.nv.cox.net (68.98.176.1) 13.948 ms
ip68-100-0-1.nv.nv.cox.net
(68.100.0.1) 16.743 ms 16.207 ms
4 ip68-100-0-137.nv.nv.cox.net (68.100.0.137) 17.324 ms 13.933 ms
20.938 ms
5 68.1.1.4 (68.1.1.4) 12.439 ms 220.166 ms 204.170 ms
6 so-6-0-0.gar2.wdc1.Level3.net (67.29.170.1) 16.177 ms 25.943 ms
14.104 ms
7 unknown.Level3.net (209.247.9.173) 14.227 ms 17.553 ms 15.415 ms
8 so-0-1-0.bbr1.NewYork1.level3.net (64.159.1.41) 17.063 ms 20.960 ms
19.512 ms
9 so-7-0-0.gar1.NewYork1.Level3.net (64.159.1.182) 20.334 ms 19.440 ms
17.938 ms
10 so-4-0-0.edge1.NewYork1.Level3.net (209.244.17.74) 27.526 ms 18.317
ms 21.202 ms
11 uunet-level3-oc48.NewYork1.Level3.net (209.244.160.12) 21.411 ms
19.133 ms 18.830 ms
12 0.so-6-0-0.XL1.NYC4.ALTER.NET (152.63.21.78) 21.203 ms 22.670 ms
20.111 ms
13 0.so-2-0-0.TL1.NYC8.ALTER.NET (152.63.0.153) 30.929 ms 24.858 ms
23.108 ms
14 0.so-4-1-0.TL1.ATL5.ALTER.NET (152.63.10.129) 37.894 ms 33.244 ms
33.910 ms
15 0.so-7-0-0.XL1.MIA4.ALTER.NET (152.63.86.189) 51.165 ms 49.935 ms
49.466 ms
16 0.so-3-0-0.XR1.MIA4.ALTER.NET (152.63.101.41) 50.937 ms 49.005 ms
51.055 ms
17 117.ATM6-0.GW5.MIA1.ALTER.NET (152.63.82.73) 51.897 ms 50.280 ms
53.647 ms
18 target-gw1.customer.alter.net (65.195.239.14) 51.921 ms 51.571 ms
56.855 ms
19 www.target.com <http://www.target.com/> (65.195.239.22) 52.191 ms
52.571 ms 56.855 ms
20 www.target.com <http://www.target.com/> (65.195.239.22) 53.561 ms
```

This probably indicates what?

- A. A host based IDS
- B. A Honeypot
- C. A stateful inspection firewall
- D. An application proxying firewall

Correct Answer: C

QUESTION 3

Eric has discovered a fantastic package of tools named Dsniff on the Internet. He has learnt to use these tools in his lab



and is now ready for real world exploitation. He was able to effectively intercept communications between the two entities and establish credentials with both sides of the connections. The two remote ends of the communication never notice that Eric is relaying the information between the two.

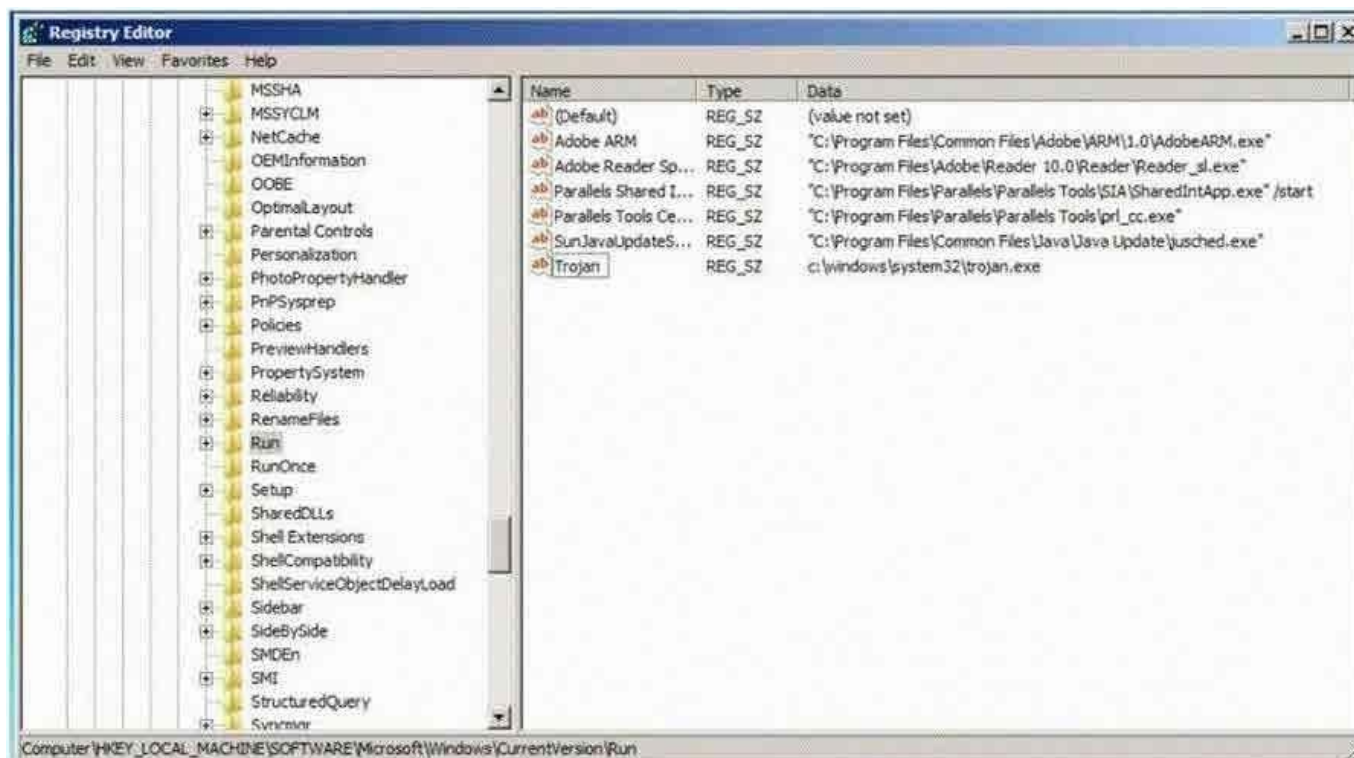
What would you call this attack?

- A. Interceptor
- B. Man-in-the-middle
- C. ARP Proxy
- D. Poisoning Attack

Correct Answer: B

QUESTION 4

Which of the following Registry location does a Trojan add entries to make it persistent on Windows ?? (Select 2 answers)



- A. HKEY_LOCAL_MACHINE\SOFTWARE\Microsoft\Windows\CurrentVersion\Run
- B. HKEY_LOCAL_MACHINE\SOFTWARE\Microsoft\Windows\System32\CurrentVersion\ Run
- C. HKEY_CURRENT_USER\Software\Microsoft\Windows\System32\CurrentVersion\Run
- D. HKEY_CURRENT_USER\Software\Microsoft\Windows\CurrentVersion\Run

Correct Answer: AD



QUESTION 5

Which of the following processes evaluates the adherence of an organization to its stated security policy?

- A. Vulnerability assessment
- B. Penetration testing
- C. Risk assessment
- D. Security auditing

Correct Answer: D

[CEH-001 VCE Dumps](#)

[CEH-001 Exam Questions](#)

[CEH-001 Braindumps](#)