



C9550-412^{Q&As}

IBM Business Process Management Express or Standard Edition
V8.5.5, BPM Application Development

Pass IBM C9550-412 Exam with 100% Guarantee

Free Download Real Questions & Answers **PDF** and **VCE** file from:

<https://www.passapply.com/c9550-412.html>

100% Passing Guarantee
100% Money Back Assurance

Following Questions and Answers are all new published by IBM Official
Exam Center

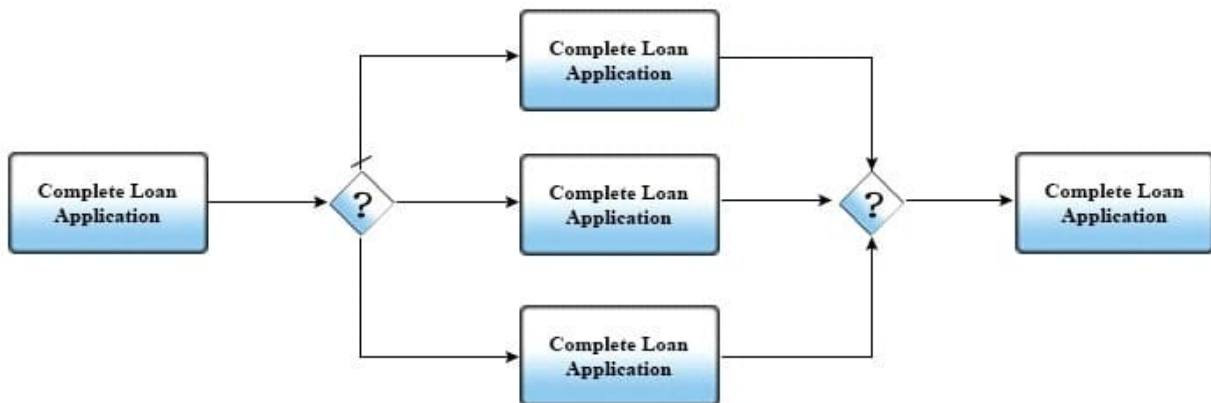
-  **Instant Download** After Purchase
-  **100% Money Back** Guarantee
-  **365 Days** Free Update
-  **800,000+** Satisfied Customers





QUESTION 1

In order for a underwriter to review a mortgagie loan applicaton, the applicant must frst complete a loan applicaton, then obtain employment verifcaton, credit reports and property appraisal (which can occur in any order). The review by underwriter activity must run exactly once.



Which iateways should the BPM applicaton developer choose in this scenario?

- A. Parallel split and parallel join
- B. Parallel split and exclusive join
- C. Inclusive split and inclusive join
- D. Exclusive split and inclusive join

Correct Answer: B

QUESTION 2

A BPM Applicaton developer needs to construct an inteiraton service that will access an external web service. The web service has been predefined in the process applicaton setnis. The BPM applicaton developer creates a new inteiraton service and adds a web service inteiraton to the canvas. Since this is a predefined web service, on the implementaton tab, the BPM applicaton developer selects "From process applicaton setnis" for the discovery scheme.

What should be the next step in confiurini the web service connector usini the predefined server for the BPM applicaton developer?

- A. insert the url and use the "Discover" buton.
- B. Fill in the data mappini tab in the web service propertes.
- C. Select the defned web service and select which operaton to use.
- D. Generate the data types that will be inputs and outputs for the web service.



Correct Answer: C

QUESTION 3

A BPM application developer is building client side human services including custom coach views for inclusion in a set of business process definitions (BPDs). The BPM application developer tests the business processes using the process designer inspector. One of the human services is not working as expected and it is suspected that the JavaScript in the custom coach views is at fault.

Which of the following debugging tools can the BPM application developer use to diagnose the problem?

- A. BPM service debugger
- B. BPM process inspector
- C. Process admin inspector
- D. Browser debugger features

Correct Answer: D

QUESTION 4

An existing Case Type implementation is initiated either by adding documents of a specific document type to the BPM document management environment or manually by knowledge workers. Now, the case type needs to be enhanced, to initiate case instances programmatically.

How does the BPM application developer provide the capability?

- A. Drag the case type onto a swim lane
- B. Drag the case initiation service onto a swim lane
- C. Use a JavaScript API function in a Script
- D. use a REST API for case in a REST call

Correct Answer: A

QUESTION 5

A BPM application developer is building a case type. The BPM application developer has a wide range of existing BPM components available and wants to reuse as many of them as possible. Which BPM implementation types can the BPM application developer use to build case type activities?

- A. Script, Subprocess and User Task
- B. Script, System Task and User Task
- C. Linked Process, Subprocess and User Task



D. Linked Process, Subprocess and System Task

Correct Answer: C

[C9550-412 Practice Test](#)

[C9550-412 Study Guide](#)

[C9550-412 Braindumps](#)