



C9550-275^{Q&As}

Bluemix Live IBM Business Process Manager Express or Standard Edition V8.0 BPM Analysis

Pass IBM C9550-275 Exam with 100% Guarantee

Free Download Real Questions & Answers **PDF** and **VCE** file from:

<https://www.passapply.com/c9550-275.html>

100% Passing Guarantee
100% Money Back Assurance

Following Questions and Answers are all new published by IBM Official Exam Center

- ⚙️ **Instant Download** After Purchase
- ⚙️ **100% Money Back** Guarantee
- ⚙️ **365 Days** Free Update
- ⚙️ **800,000+** Satisfied Customers





QUESTION 1

A company needs to improve their hiring process using a Business Process Management System (BPMS). Currently, their hiring manager writes a free form email regarding a new open position and sends it to the HR manager for approval. The hiring manager wants to standardize this activity using a BPMS. How should the BPM analyst define this user story?

- A. As a BPMS, I want to provide an electronic form to the Hiring Manager, so that the Hiring Manager can complete the request.
- B. As a BPMS, I want to provide an electronic form instead of a document so that the data can be saved and retrieved for reporting purposes.
- C. As a Hiring Manager, I want to have a user interface with all the fields necessary to complete the hiring request form, so that I can avoid using a word document.
- D. As a Hiring Manager, I want to complete the hiring request form and submit the form to the HR Manager, so that the HR Manager can review my request and make a decision on filling this position.

Correct Answer: D

QUESTION 2

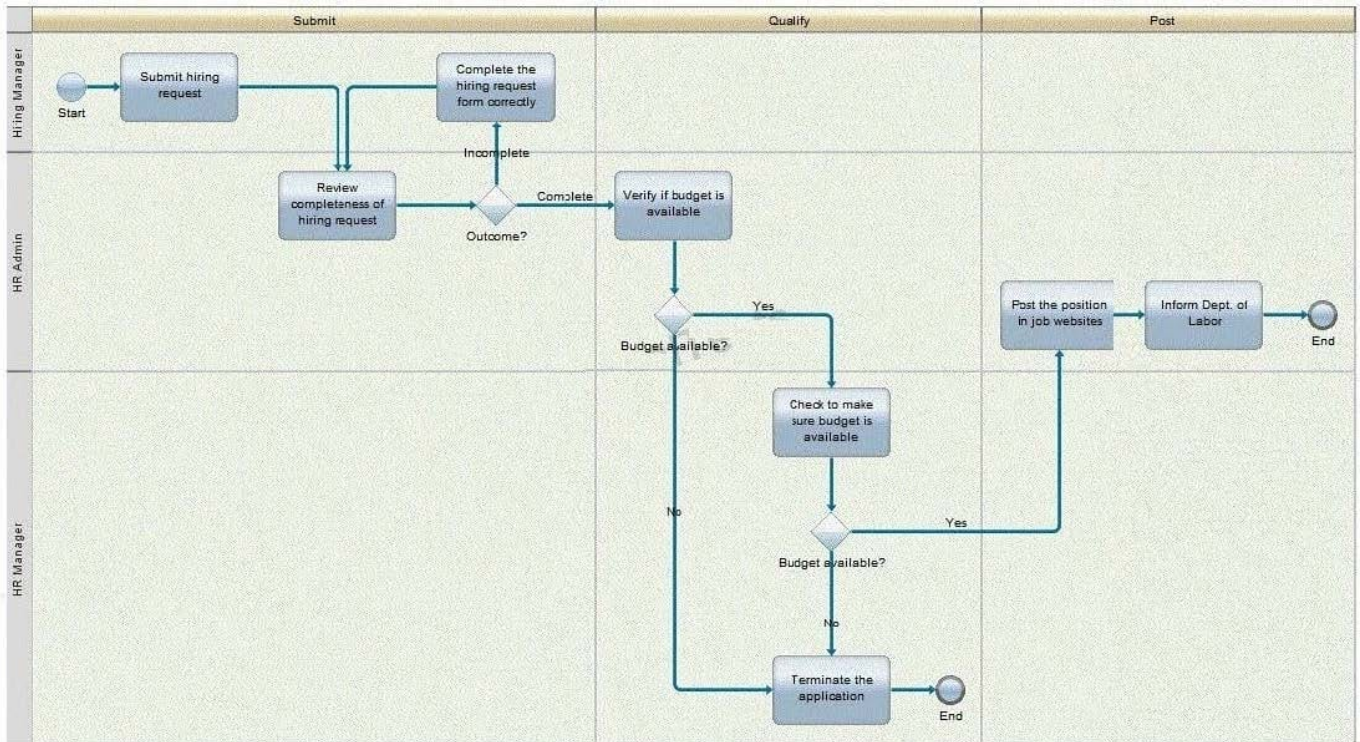
A BPM analyst is conducting interviews with the participants of a business process. What feedback about the process should the BPM analyst look out for that might not be obvious in an as-is process diagram?

- A. Excessive reviews
- B. Too many participants
- C. Identification of bottlenecks
- D. Not enough system automation

Correct Answer: C

QUESTION 3

A company needs to improve their Hiring Process and hired a BPM analyst to analyze their current process. The analyst completed documenting the current state process of submitting the hiring request (refer to the process diagram below) and did a "Value-Add" Analysis with the process stakeholders.



Identify the "Non-Value Add" activities in this process.

- A. "Inform Dept. of Labor" and "Terminate the application"
- B. "Inform Dept. of Labor" and "Check to make sure budget is available"
- C. "Complete the hiring request form correctly" and "Terminate the application"
- D. "Complete the hiring request form correctly" and "Check to make sure budget is available"

Correct Answer: D

QUESTION 4

A company needs to improve its hiring process and hired a BPM analyst to map the current state. During the process discovery session, the team identifies that the process steps to review the "hiring" request are the same as the process steps to review a "promotion/pay rise" request. What element should the BPM analyst use to map the activities needed for the review of the "hiring" request in Blueworks Live?

- A. A sub-process.
- B. A different color.
- C. A linked process.
- D. A separate milestone.

Correct Answer: C

**QUESTION 5**

The Human Resources department has pre-selected 4 processes as candidates for BPM Implementation. They think all these 4 processes have equal business value. They hire a BPM analyst to identify 1 process for BPM Implementation. What questions must the BPM analyst ask in order to identify a process for implementing BPM.

A. 1. Does the process change frequently?

2.

Are tasks being communicated informally through emails and phone calls?

3.

Does this project have enough IT challenges?

4.

Does the process integrate with at least 3 systems?

B. 1. Does the process change frequently?

2.

Are tasks being communicated informally through emails and phone calls?

3.

Is the same data entered multiple times into multiple systems?

4.

Is there poor visibility into process performance?

C. 1. Does the process integrate with at least 3 systems?

2.

Are tasks being communicated informally through emails and phone calls?

3.

Is the same data entered multiple times into multiple systems?

4.

Is there poor visibility into process performance?

D. 1. Is there poor visibility into process performance?

2.

Does the process have ad-hoc events?

3.

Is the same data entered multiple times into multiple systems?



4.

Does this project have enough IT challenges?

Correct Answer: B

[C9550-275 PDF Dumps](#)

[C9550-275 VCE Dumps](#)

[C9550-275 Exam Questions](#)