



C5050-062^{Q&As}

Rational UrbanCode Deploy

Pass IBM C5050-062 Exam with 100% Guarantee

Free Download Real Questions & Answers **PDF** and **VCE** file from:

<https://www.passapply.com/c5050-062.html>

100% Passing Guarantee
100% Money Back Assurance

Following Questions and Answers are all new published by IBM Official Exam Center

- ⚙ **Instant Download** After Purchase
- ⚙ **100% Money Back** Guarantee
- ⚙ **365 Days** Free Update
- ⚙ **800,000+** Satisfied Customers



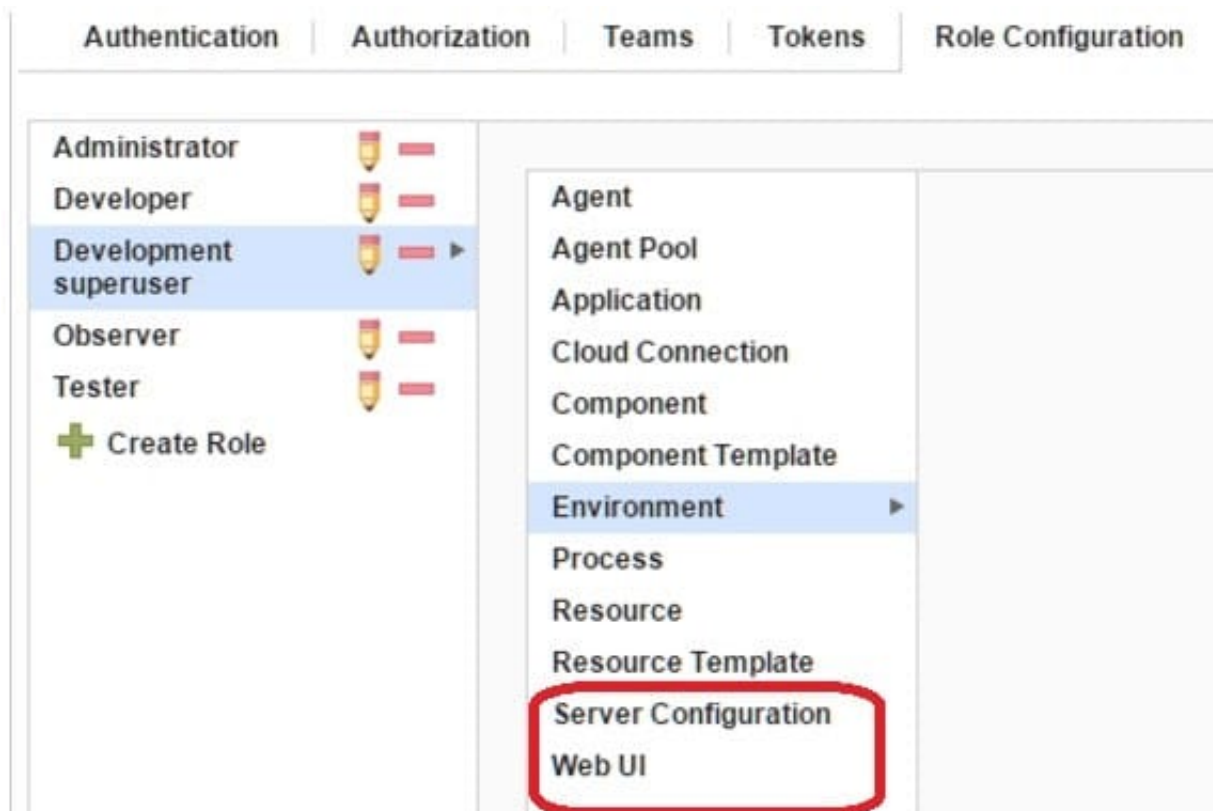


QUESTION 1

Which security types are used to secure the IBM UrbanCode Deploy server?

- A. Server Configuration and Web UI
- B. Security UI and Application Security
- C. Application Security and DevOps Security
- D. UI Security and DevOps Security

Correct Answer: A



References: http://www.ibm.com/support/knowledgecenter/en/SS4GSP_6.1.3/com.ibm.udeploy.admin.doc/topics/security_types.html

QUESTION 2

You are integrating IBM UrbanCode Deploy (UCD) with a database in order to perform database deployments. Which statements is true about IBM UCD and the order of the SQL scripts to be executed?

- A. IBM UCD queries the target database to determine the order in which the scripts need to be executed.



- B. The order must be hardcoded into the deployment process.
- C. IBM UCD will only run scripts that have not been executed against a database. The order is irrelevant.
- D. IBM UCD uses a naming convention to determine the order to execute the scripts.

Correct Answer: D

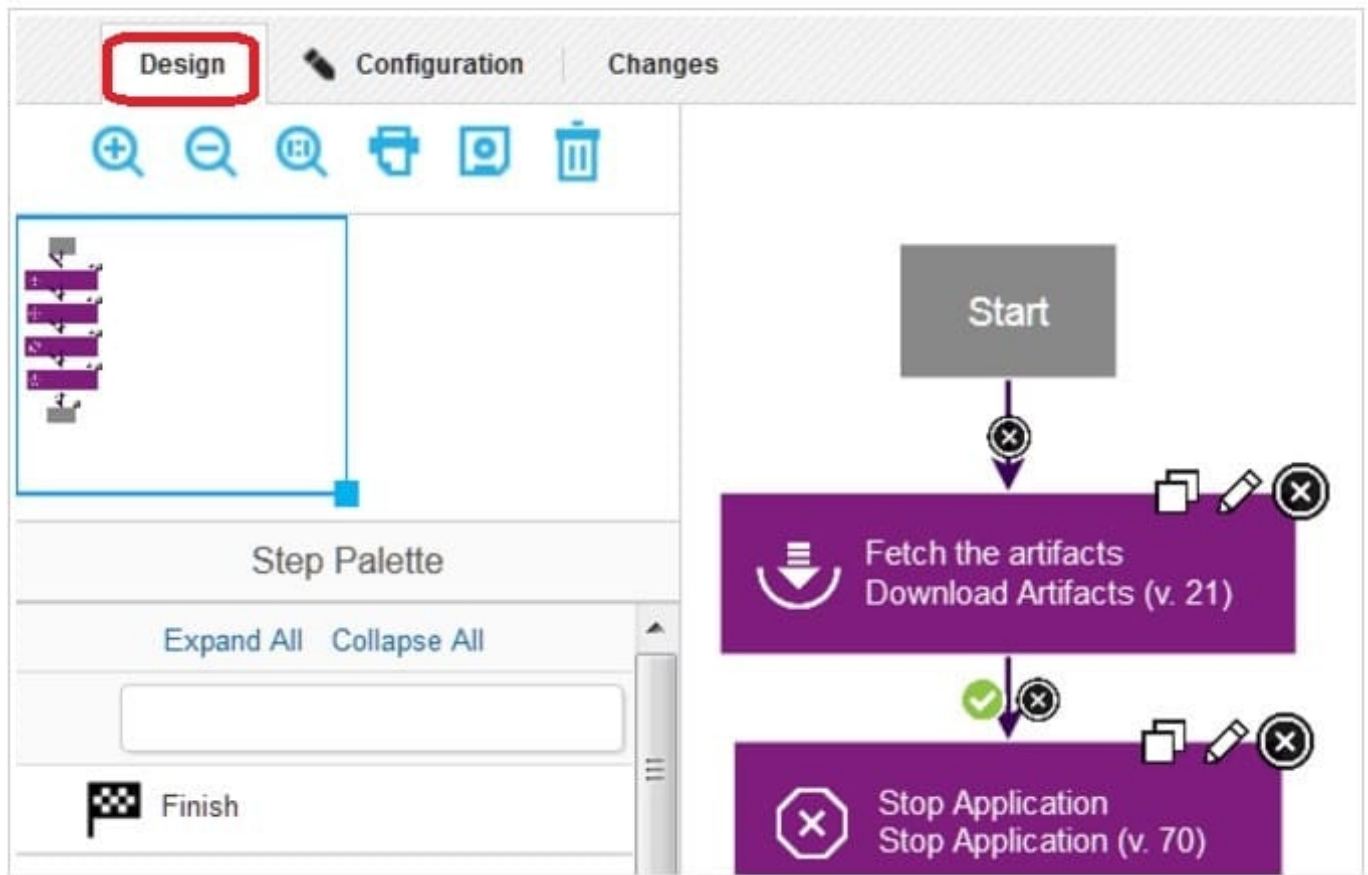
QUESTION 3

Which steps are used to create or modify a process by combining plugin steps?

- A. Select the process, then define or edit it using the Design tab of the Process user interface
- B. Select the process, then define or edit it using the Edit tab of the Process user interface.
- C. Select a component, then define or edit its process using the Process tab of the Component user interface.
- D. Select a component, then define or edit its process using the Workflow tab of the Component user interface

Correct Answer: A

In the process editor you organize the steps in a process, specify their properties, and connect them to each other. By combining automation plug-in steps in the process editor, you can create fully automated deployment processes. When you create a process, you drag steps onto the design area and define the properties as you go. Property values can be specified when you define the process or at run time. The process flow is defined by drawing connections between steps. The following illustration, shows a series of automation-type plug-in steps and the connections between them.



Note: A component process is a series of user-defined steps that operate on a component's artifacts. Each component has at least one process and can have several. Component processes are created with the process editor. The process editor is a visual drag-and-drop editor that enables you to drag process steps onto the design space and configure them as you go. Process steps are selected from a menu of standard steps.

References: http://www.ibm.com/support/knowledgecenter/SS4GSP_6.1.3/com.ibm.udeploy.reference.doc/topics/plugin_ch.html

QUESTION 4

The approval process is executed when approved by which user type?

- A. The user type currently configured to execute the process
- B. The administrator user type
- C. The user type configured for approval in the approval process being executed
- D. The user type of the user created both the application processes and the component processes

Correct Answer: C

Deployment approvals are created in a process that specifies the job that needs approval and the role of the approver. When a request for approval is made, the users with the corresponding role are notified of the work item through email. The approver has the liberty to approve or reject a deployment as well as provide comments to the decision.

References: <https://developer.ibm.com/urbandcode/products/urbandcode-deploy/features/quality-gatesapprovals/>



QUESTION 5

Which three statements are true about creating new component versions? (Select three.)

- A. New component versions can be created using the IBM UrbanCode Deploy client.
- B. New component versions can be created when updating the application configuration.
- C. New component versions can be created from the versions tab of the component.
- D. New component versions can be created using an IBM UrbanCode Deploy generic process.

Correct Answer: ACD

AD: Each time a component's artifacts are imported into the repository, including the first time, a separate version is stored in CodeStation. Versions can be assigned automatically by IBM UrbanCode Deploy, applied manually, or come from a build server.

If the component does not import new versions automatically, you can import versions manually.

C: Step 1: Step 2:

Click the **Components** tab, and then click the component that you created. You see this page





Version import overview

Next, click the **Versions** tab, and then click **Import new Versions**. You see this page:

Import New Versions

Version Name * ?

Version Description ?

Save Cancel

References:

<http://www.slideshare.net/ibmrational/ucd-components> (page 26)

http://www.ibm.com/support/knowledgecenter/SS4GSP_6.2.2/com.ibm.udeploy.doc/topics/

[comp_version.html](#)

[C5050-062 Practice Test](#)

[C5050-062 Study Guide](#)

[C5050-062 Exam Questions](#)