



C2090-645^{Q&As}

IBM Cognos 10 BI Multidimensional Author

Pass IBM C2090-645 Exam with 100% Guarantee

Free Download Real Questions & Answers **PDF** and **VCE** file from:

<https://www.passapply.com/c2090-645.html>

100% Passing Guarantee
100% Money Back Assurance

Following Questions and Answers are all new published by IBM Official Exam Center

-  **Instant Download** After Purchase
-  **100% Money Back** Guarantee
-  **365 Days** Free Update
-  **800,000+** Satisfied Customers





QUESTION 1

Which of the following statements is correct about the order function?

- A. The currentMeasure function must be used with the orderfunction as the sort by criterion.
- B. It arranges members of all sets in the report by ascending or descending values.
- C. Optional parameters allow the author to order the members of a hierarchy without regard of their level.
- D. It arranges members of a set alphabetically by ascending or descending captions.

Correct Answer: C

QUESTION 2

A data source has a Time hierarchy, a Products hierarchy, and a Retailers hierarchy. What are the preferred techniques the report author would use to focus reports for this type of a data source?

- A. Dimensional functions and slicers
- B. Use Members directly
- C. Ancestors and descendants
- D. Detail filters and summary filters

Correct Answer: A

QUESTION 3

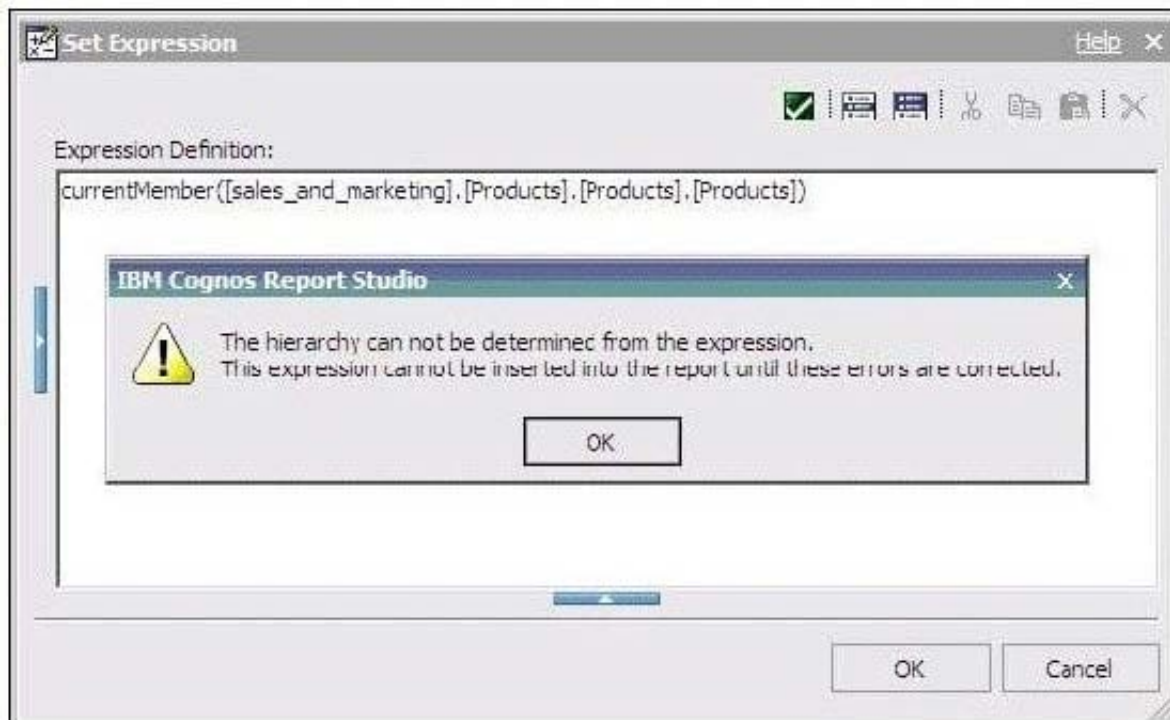
A report author can use a slicer to do what?

- A. Make the report database smaller and efficient
- B. Provide context to intersection values
- C. Reduce the number of members on the edge of the crosstab.
- D. Generate a zero suppression filter in the rows

Correct Answer: B

QUESTION 4

The dialog box shown appears when a report is run.



What should the report author do to correct the situation?

- A. Ask the modeler to rename the hierarchy to `\"[sales_and_marketing].[Products].[Products].[Products]\"`, and to republish the package.
- B. Modify the expression to change the `\"currentMember\"` function to `\"currentLevel\"`.
- C. Modify the expression to change the `\"currentMember\"` function to `\"currentHierarchy\"`.
- D. Modify the expression to `\"currentMember([sales_and_marketing].[Products].[Products])\"`.

Correct Answer: D

QUESTION 5

The "Sales" and "Inventory" data stores each have "Products" and "Time" dimensions. For drill-through between the data stores on the "Products" and "Time" dimensions to work, which items in the structures must be identical in the data stores?

- A. Hierarchy names, member values
- B. Level order, level names
- C. Hierarchy names, snowflake schema
- D. Role value, internal keys

Correct Answer: B



VCE & PDF

PassApply.com

<https://www.passapply.com/c2090-645.html>

2024 Latest passapply C2090-645 PDF and VCE dumps Download

[C2090-645 Practice Test](#)

[C2090-645 Study Guide](#)

[C2090-645 Exam Questions](#)