



C2090-011^{Q&As}

IBM SPSS Statistics Level 1 v2

Pass IBM C2090-011 Exam with 100% Guarantee

Free Download Real Questions & Answers **PDF** and **VCE** file from:

<https://www.passapply.com/c2090-011.html>

100% Passing Guarantee
100% Money Back Assurance

Following Questions and Answers are all new published by IBM Official Exam Center

-  **Instant Download** After Purchase
-  **100% Money Back** Guarantee
-  **365 Days** Free Update
-  **800,000+** Satisfied Customers





QUESTION 1

There are two major types of errors one can make when attempting to draw conclusions about the larger population based on the information collected in the sample. For example, when performing an Independent Samples T-Test, one type of error that can occur is when there are significant differences between the groups based on a scale level dependent variable, but the test fails to detect them. Which of the following choices describe this sort of error? (Choose two.)

- A. Type i error
- B. Type ii error
- C. False negative
- D. False positive

Correct Answer: BC

QUESTION 2

Which chart type is appropriate for viewing the association between two scale variables?

- A. Bar chart
- B. Area chart
- C. Pie chart
- D. Scatter plot

Correct Answer: D

QUESTION 3

What statistical test should be used to assess whether the percentage differences observed in a crosstabs table could have occurred by chance?

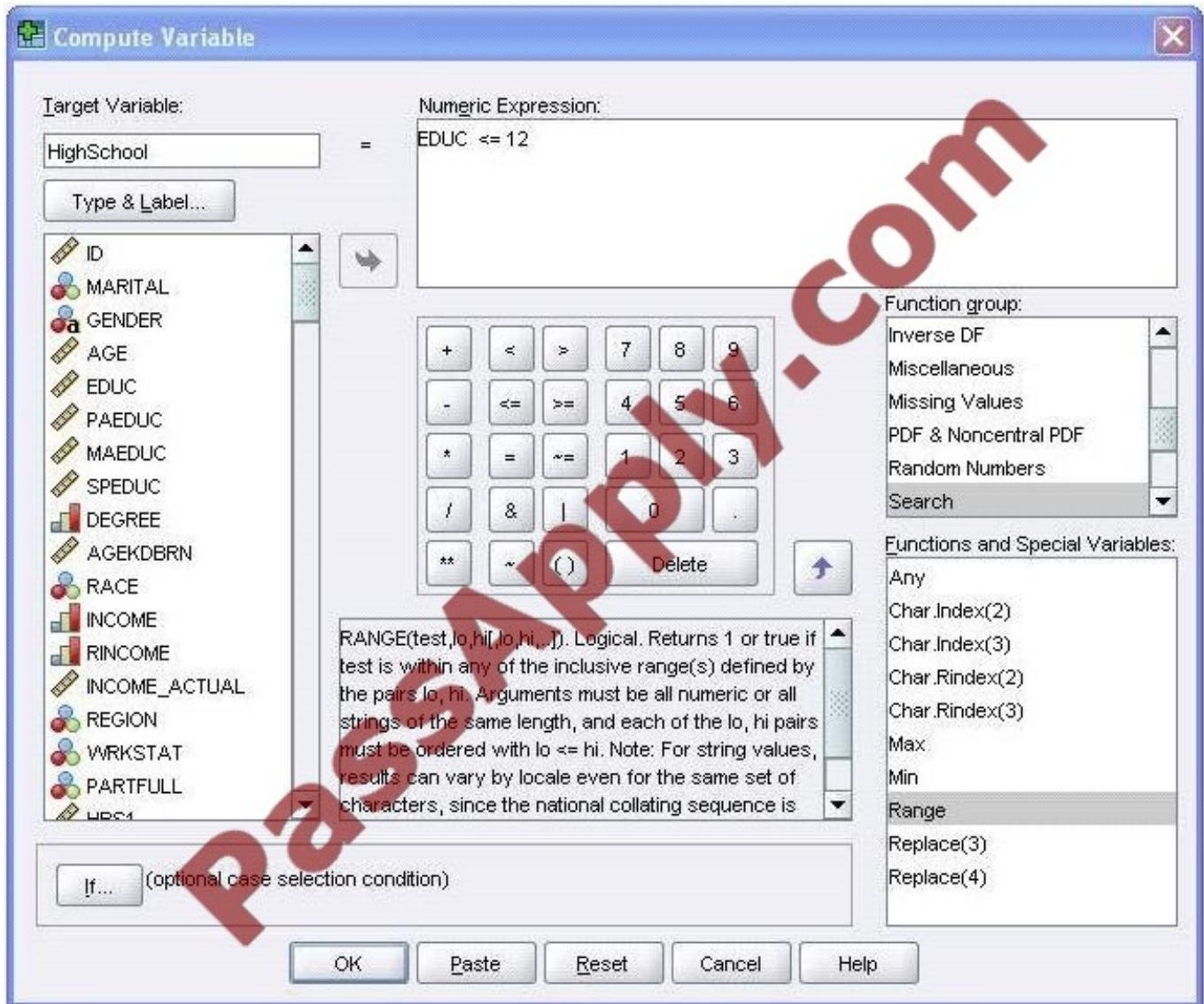
- A. Correlation
- B. Linear Regression
- C. T-Test
- D. Chi-square test of independence

Correct Answer: D

QUESTION 4



Using the Compute Variable dialog below, the target variable HighSchool will have the following values. (Choose two.)



- A. Value 1 if EDUC is less than or equal to 12
- B. System-missing value if EDUC is greater than 12
- C. The same value as EDUC if EDUC is less than or equal to 12
- D. Value 0 if EDUC is greater than 12

Correct Answer: AB

QUESTION 5

What information is contained in the journal file?

- A. Information relating to the IBM SPSS Statistics data file you are working with



- B. Information relating to the IBM SPSS Statistics data file you are working with and any output created
- C. Syntax from all operations relating to manipulating variables
- D. Syntax from actions taken in dialog boxes or from running commands from the Syntax Editor

Correct Answer: D

[C2090-011 PDF Dumps](#)

[C2090-011 Practice Test](#)

[C2090-011 Study Guide](#)



To Read the [Whole Q&As](#), please purchase the [Complete Version](#) from [Our website](#).

Try our product !

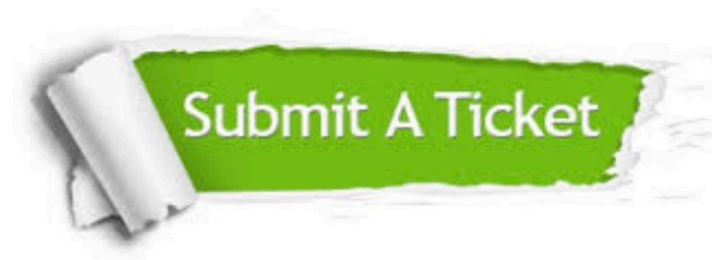
100% Guaranteed Success
100% Money Back Guarantee
365 Days Free Update
Instant Download After Purchase
24x7 Customer Support
Average 99.9% Success Rate
More than 800,000 Satisfied Customers Worldwide
Multi-Platform capabilities - [Windows](#), [Mac](#), [Android](#), [iPhone](#), [iPod](#), [iPad](#), [Kindle](#)

We provide exam PDF and VCE of Cisco, Microsoft, IBM, CompTIA, Oracle and other IT Certifications. You can view Vendor list of All Certification Exams offered:

<https://www.passapply.com/allproducts>

Need Help

Please provide as much detail as possible so we can best assist you.
To update a previously submitted ticket:



 <p>One Year Free Update Free update is available within One Year after your purchase. After One Year, you will get 50% discounts for updating. And we are proud to boast a 24/7 efficient Customer Support system via Email.</p>	 <p>Money Back Guarantee To ensure that you are spending on quality products, we provide 100% money back guarantee for 30 days from the date of purchase.</p>	 <p>Security & Privacy We respect customer privacy. We use McAfee's security service to provide you with utmost security for your personal information & peace of mind.</p>
---	---	--

Any charges made through this site will appear as Global Simulators Limited.
All trademarks are the property of their respective owners.
Copyright © passapply, All Rights Reserved.