



C2090-011^{Q&As}

IBM SPSS Statistics Level 1 v2

Pass IBM C2090-011 Exam with 100% Guarantee

Free Download Real Questions & Answers **PDF** and **VCE** file from:

<https://www.passapply.com/c2090-011.html>

100% Passing Guarantee
100% Money Back Assurance

Following Questions and Answers are all new published by IBM Official Exam Center

-  **Instant Download** After Purchase
-  **100% Money Back** Guarantee
-  **365 Days** Free Update
-  **800,000+** Satisfied Customers





QUESTION 1

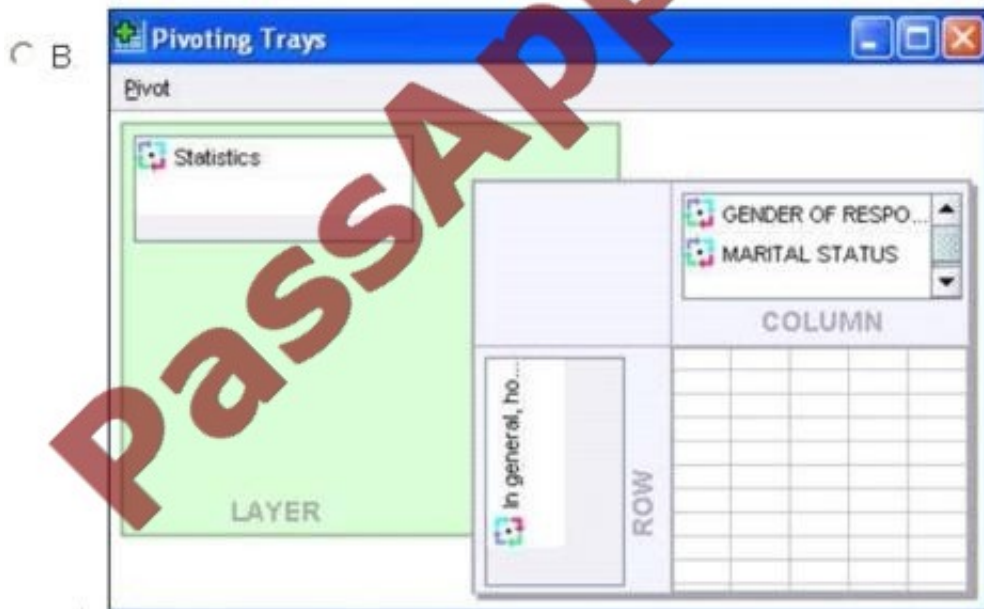
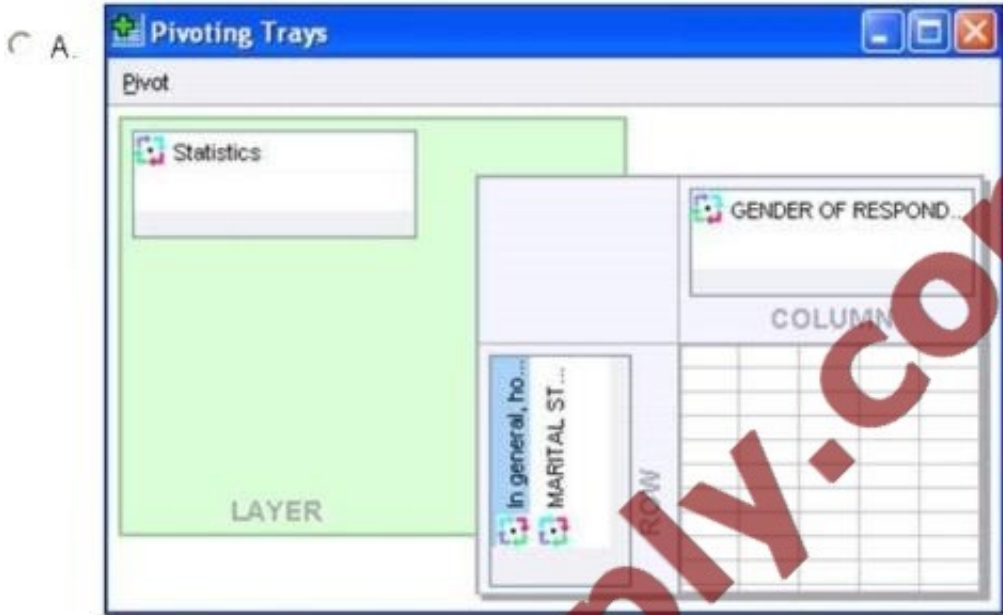
Which chart type is appropriate for viewing the association between two scale variables?

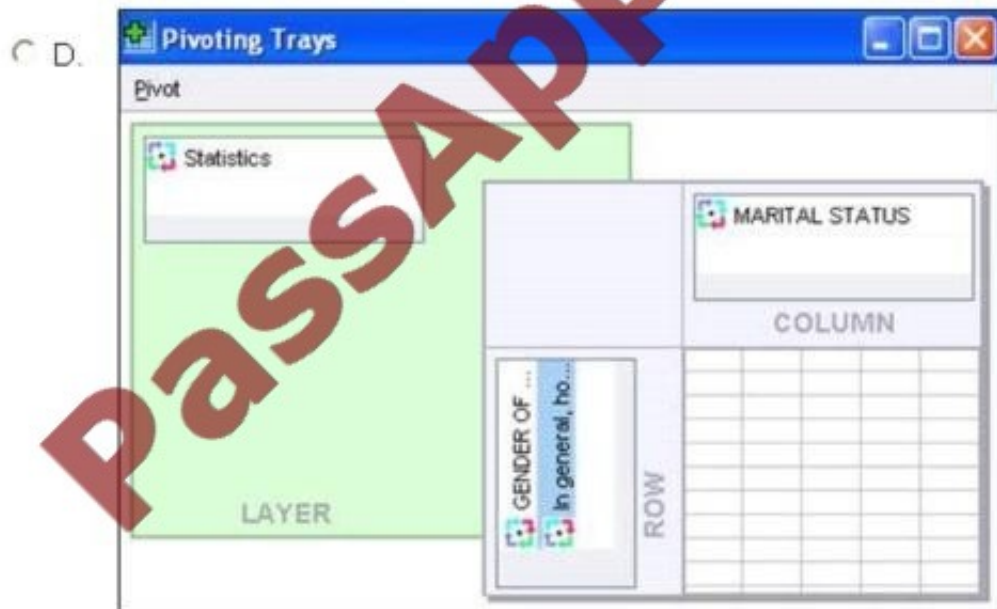
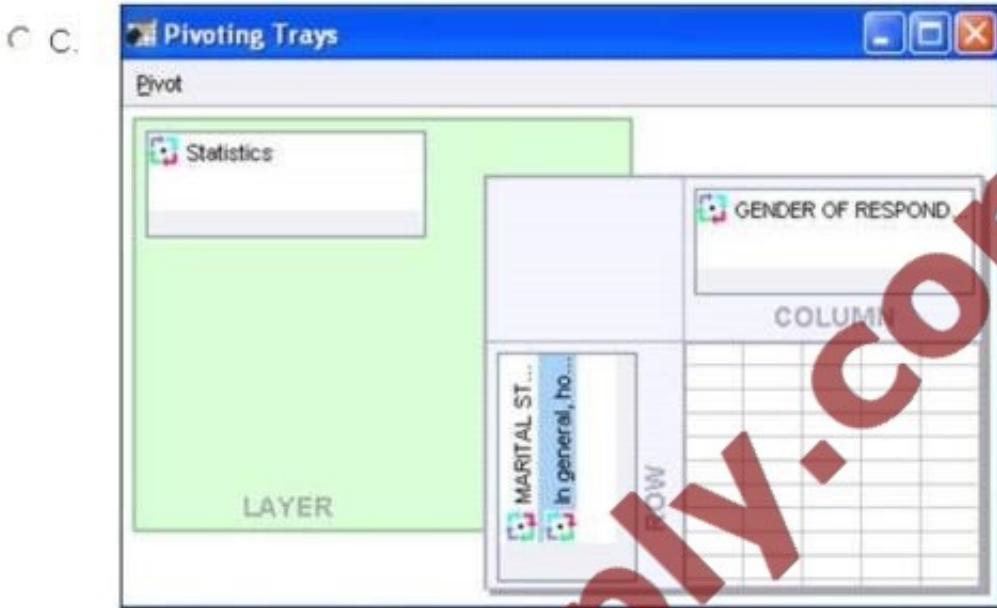
- A. Bar chart
- B. Area chart
- C. Pie chart
- D. Scatter plot

Correct Answer: D

QUESTION 2

Which Pivoting Tray corresponds to the illustrated cross tabulation?



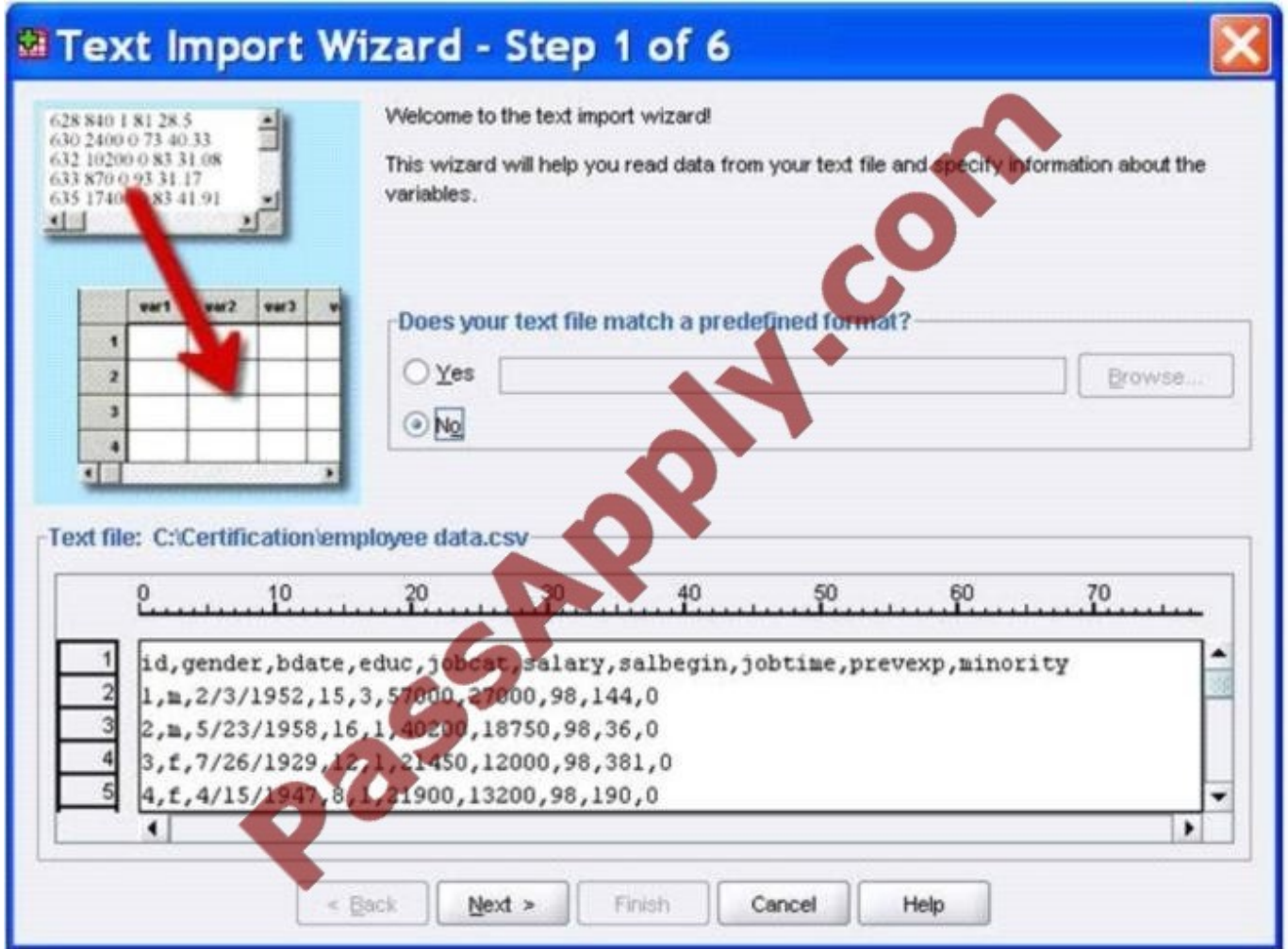


- A. Option A
- B. Option B
- C. Option C
- D. Option D

Correct Answer: C

QUESTION 3

The text file shown in the figure below is an example of a fixed format text file.



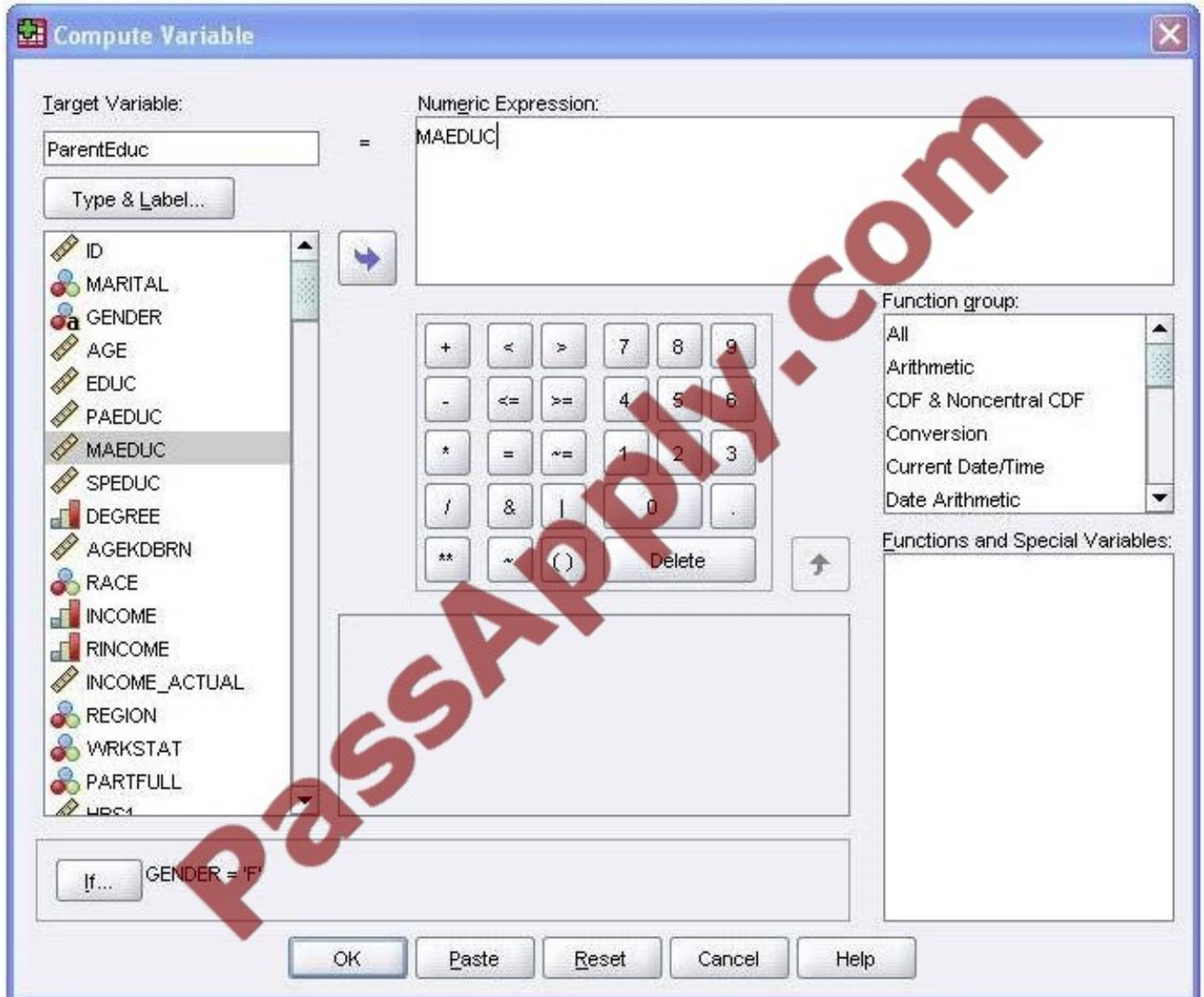
A. True

B. False

Correct Answer: B

QUESTION 4

The Compute Variable dialog shown below performs which of the following operations? (Choose two.)

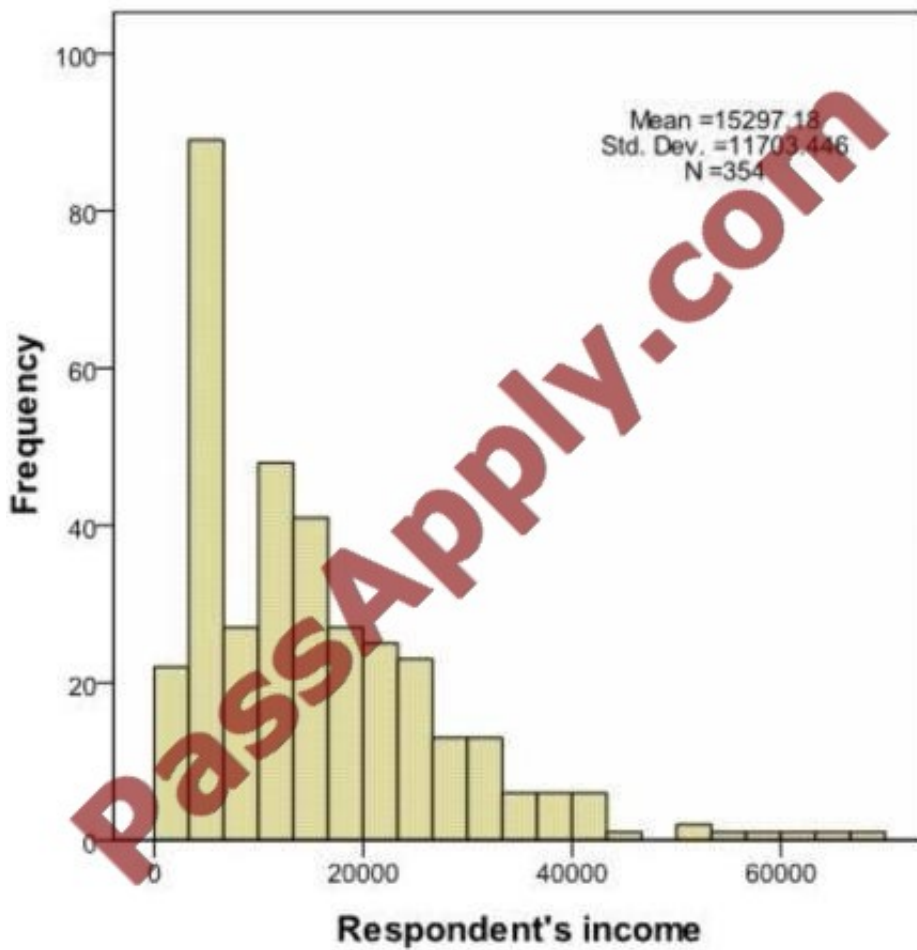


- A. Sets the value of ParentEduc equal to the value of MAEDUC.
- B. Sets the value of ParentEduc equal to the value of MAEDUC if the value of GENDER is
- C.
- D. Sets the value of ParentEduc equal to the system-missing value if the value of GENDER is blank.
- E. Sets the value of ParentEduc equal to the user-missing value if the value of GENDER is blank.

Correct Answer: BC

QUESTION 5

You have been asked to create a categorical variable from a scale variable, income, illustrated in the histogram below. The resulting categorical variable must have 5 categories with an approximately equal number of cases in each category. Which way would you accomplish this using the IBM SPSS Statistics Visual Binning dialog?



- A. Use the automatic option Equal Width Intervals
- B. Use the automatic option Equal Percentiles Based on Scanned Cases
- C. Use the automatic option Outpoints at Mean and Selected Standard Deviations Based on Scanned Cases
- D. Specify Cut points manually at 10000, 20000, 30000, 40000 and 50000.

Correct Answer: B

[C2090-011 VCE Dumps](#)

[C2090-011 Study Guide](#)

[C2090-011 Braindumps](#)



To Read the [Whole Q&As](#), please purchase the [Complete Version](#) from [Our website](#).

Try our product !

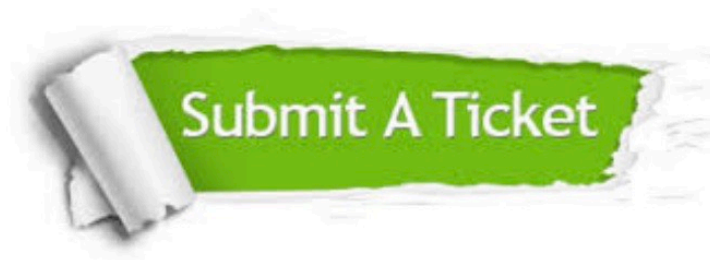
100% Guaranteed Success
100% Money Back Guarantee
365 Days Free Update
Instant Download After Purchase
24x7 Customer Support
Average 99.9% Success Rate
More than 800,000 Satisfied Customers Worldwide
Multi-Platform capabilities - [Windows](#), [Mac](#), [Android](#), [iPhone](#), [iPod](#), [iPad](#), [Kindle](#)

We provide exam PDF and VCE of Cisco, Microsoft, IBM, CompTIA, Oracle and other IT Certifications. You can view Vendor list of All Certification Exams offered:

<https://www.passapply.com/allproducts>

Need Help

Please provide as much detail as possible so we can best assist you.
To update a previously submitted ticket:



 <p>One Year Free Update Free update is available within One Year after your purchase. After One Year, you will get 50% discounts for updating. And we are proud to boast a 24/7 efficient Customer Support system via Email.</p>	 <p>Money Back Guarantee To ensure that you are spending on quality products, we provide 100% money back guarantee for 30 days from the date of purchase.</p>	 <p>Security & Privacy We respect customer privacy. We use McAfee's security service to provide you with utmost security for your personal information & peace of mind.</p>
---	---	--

Any charges made through this site will appear as Global Simulators Limited.
All trademarks are the property of their respective owners.
Copyright © passapply, All Rights Reserved.