



# AZ-300<sup>Q&As</sup>

Microsoft Azure Architect Technologies

## Pass Microsoft AZ-300 Exam with 100% Guarantee

Free Download Real Questions & Answers **PDF** and **VCE** file from:

<https://www.passapply.com/az-300.html>

100% Passing Guarantee  
100% Money Back Assurance

Following Questions and Answers are all new published by Microsoft  
Official Exam Center

-  **Instant Download** After Purchase
-  **100% Money Back** Guarantee
-  **365 Days** Free Update
-  **800,000+** Satisfied Customers





## QUESTION 1

You develop an entertainment application where users can buy and trade virtual real estate. The application must scale to support thousands of users.

The current architecture includes five Azure virtual machines (VM) that connect to an Azure SQL Database for account information and Azure Table Storage for backend services. A user interacts with these components in the cloud at any given time.

Routing Service ?Routes a request to the appropriate service and must not persist data across sessions.

Account Service ?Stores and manages all account information and authentication and requires data to persist across sessions

User Service ?Stores and manages all user information and requires data to persist across sessions.

Housing Network Service ?Stores and manages the current real-estate economy and requires data to persist across sessions.

Trade Service ?Stores and manages virtual trade between accounts and requires data to persist across sessions.

Due to volatile user traffic, a microservices solution is selected for scale agility.

You need to migrate to a distributed microservices solution on Azure Service Fabric.

Solution: Create a Service Fabric Cluster with a stateful Reliable Service for each component.

Does the solution meet the goal?

A. Yes

B. No

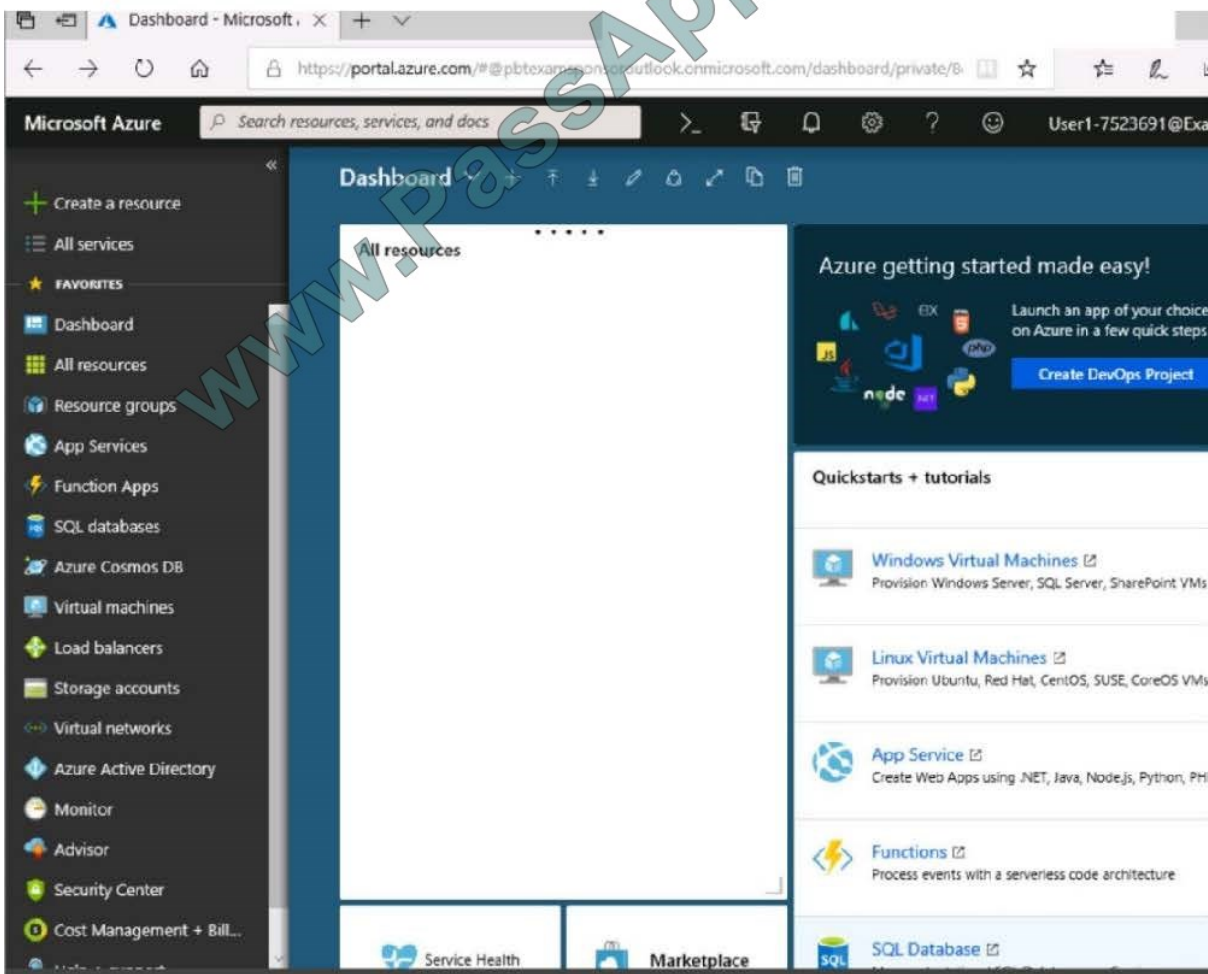
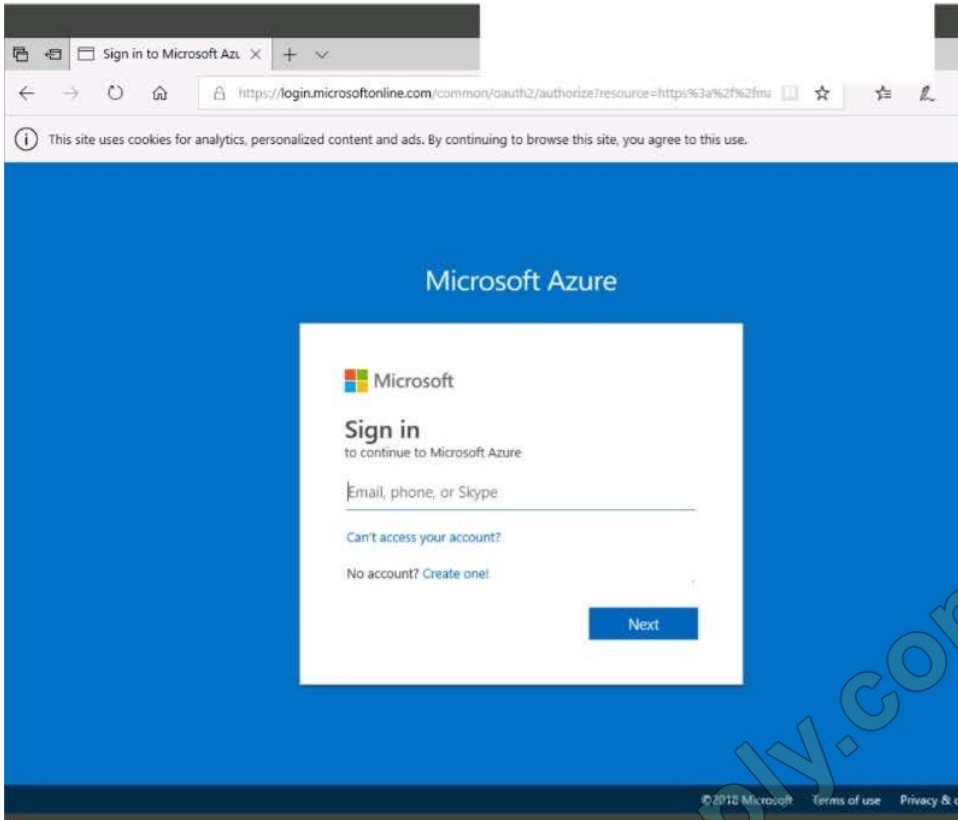
Correct Answer: B

---

## QUESTION 2

### SIMULATION

Click to expand each objective. To connect to the Azure portal, type <https://portal.azure.com> in the browser address bar.





Home > Storage accounts > Create storage account

### Create storage account

✓ Validation passed

Basics Advanced Tags Review + create

**BASICS**

Subscription	Microsoft AZ-100 5
Resource group	corpdata7523690
Location	East US
Storage account name	corpdata7523690n1
Deployment model	Resource manager
Account kind	StorageV2 (general purpose v2)
Replication	Read-access geo-redundant storage (RA-GRS)
Performance	Standard
Access tier (default)	Hot

**ADVANCED**

Secure transfer required	Enabled
Hierarchical namespace	Disabled

Create Previous Next Download a template for automation

Home > Storage accounts > Create storage account

### Create storage account

Basics Advanced Tags Review + create

**BASICS**

Subscription	Microsoft AZ-100 5
Resource group	corpdata7523690
Location	East US
Storage account name	corpdata7523690n1
Deployment model	Resource manager
Account kind	StorageV2 (general purpose v2)
Replication	Read-access geo-redundant storage (RA-GRS)
Performance	Standard
Access tier (default)	Hot

**ADVANCED**

Secure transfer required	Enabled
Hierarchical namespace	Disabled

\*\*\* Submitting deployment...  
Submitting the deployment template for resource 'corpdata7523690'.

Home > Microsoft.StorageAccount-20181011170335 - Overview

### Microsoft.StorageAccount-20181011170335 - Overview

Deployment

Search (Ctrl+/) Delete Cancel Redeploy Refresh

**Overview**

- Outputs
- Inputs
- Template

\*\*\* Your deployment is underway

Check the status of your deployment, manage resources, or troubleshoot deployment issues. Pin this page to your dashboard to easily find it next time.

**Deployment**  
name: Microsoft.StorageAccount-20181011170335  
Subscription: Microsoft AZ-100 5  
Resource group: corpdata7523690

**DEPLOYMENT DETAILS** (Download)  
Start time: 10/11/2018 5:04:06 PM  
Duration: 17 seconds  
Correlation ID: bd0806a4-d1bd-42db-be6b-55e0ec38f49b

RESOURCE	TYPE	STATUS	OPERATL...
No results.			



Home > Virtual machines > Create a virtual machine

## Create a virtual machine

**!** Validation failed. Required information is missing or not valid.

Basics • Disks Networking Management Guest config Tags Review + create

### PRODUCT DETAILS

Ubuntu Server 18.04 LTS

by Canonical

[Terms of use](#) | [Privacy policy](#)

Pricing not available for this offering

View [Pricing details](#) for more information.

Standard D2s v3

by Microsoft

[Terms of use](#) | [Privacy policy](#)

Subscription credits apply ⓘ

**0.0960 USD/hr**

[Pricing for other VM sizes](#)

### TERMS

By clicking "Create", I (a) agree to the legal terms and privacy statement(s) associated with the Marketplace offering(s) listed above; (b) authorize Microsoft to bill my current payment method for the fees associated with the offering(s), with the same billing frequency as my Azure subscription; and (c) agree that Microsoft may share my contact, usage and transactional information with the provider(s) of the offering(s) for support, billing and other transactional activities. Microsoft does not provide rights for third-party offerings. See the [Azure Marketplace Terms](#) for additional details.

When you are finished performing all the tasks, click the `Next` button.

Note that you cannot return to the lab once you click the `Next` button. Scoring occurs in the background while you complete the rest of the exam.

### Overview

The following section of the exam is a lab. In this section, you will perform a set of tasks in a live environment. While most functionality will be available to you as it would be in a live environment, some functionality (e.g., copy and paste, ability to navigate to external websites) will not be possible by design.

Scoring is based on the outcome of performing the tasks stated in the lab. In other words, it doesn't matter how you accomplish the task, if you successfully perform it, you will earn credit for that task.

Labs are not timed separately, and this exam may have more than one lab that you must complete. You can use as much time as you would like to complete each lab. But, you should manage your time appropriately to ensure that you are

able to complete the lab(s) and all other sections of the exam in the time provided.

Please note that once you submit your work by clicking the Next button within a lab, you will NOT be able to return to the lab.



To start the lab

You may start the lab by clicking the Next button.

You need to deploy two Azure virtual machines named VM1003a and VM1003b based on an Ubuntu Server image. The deployment must meet the following requirements:

- Provide a Service Level Agreement (SLA) of 99.95 percent availability
- Use managed disks What should you do from the Azure portal?

Correct Answer:

---

### QUESTION 3

You have an Azure Service Bus.

You need to implement a Service Bus queue that guarantees first-in-first-out (FIFO) delivery of messages.

What should you do?

- A. Enable partitioning
- B. Enable duplicate detection
- C. Set the Lock Duration setting to 10 seconds
- D. Enable sessions
- E. Set the Max Size setting of the queue to 5 GB

Correct Answer: D

References: <https://docs.microsoft.com/en-us/azure/service-bus-messaging/service-bus-azure-and-service-bus-queues-compared-contrasted>

---

### QUESTION 4

DRAG DROP

You are developing Azure WebJobs.

You need to recommend a WebJob type for each scenario.

Which WebJob type should you recommend? To answer, drag the appropriate WebJob types to the correct scenarios. Each WebJob type may be used once, more than once, or not at all. You may need to drag the split bar between panes or scroll to view content.

NOTE: Each correct selection is worth one point.

Select and Place:



## Answer Area

WebJob types	Scenario	WebJob type
<input type="checkbox"/> Triggered	Run on all instances that the web app runs on. Optionally restrict the WebJob to a single instance.	<input type="text"/>
<input type="checkbox"/> Continuous	Run on a single instance that Azure selects for load balancing.	<input type="text"/>
	Supports remote debugging.	<input type="text"/>

Correct Answer:

## Answer Area

WebJob types	Scenario	WebJob type
<input type="checkbox"/> Triggered	Run on all instances that the web app runs on. Optionally restrict the WebJob to a single instance.	<input type="text" value="Continuous"/>
<input type="checkbox"/> Continuous	Run on a single instance that Azure selects for load balancing.	<input type="text" value="Triggered"/>
	Supports remote debugging.	<input type="text" value="Continuous"/>

References: <https://docs.microsoft.com/en-us/azure/app-service/webjobs-create#webjob-types>

### QUESTION 5

You have an on-premises network that contains a Hyper-V host named Host1. Host1 runs Windows Server 2016 and hosts 10 virtual machines that run Windows Server 2016.

You plan to replicate the virtual machines to Azure by using Azure Site Recovery.

You create a Recovery Services vault named ASR1 and a Hyper-V site named Site1.

You need to add Host1 to ASR1.

What should you do?

A. Download the installation file for the Azure Site Recovery Provider.

Download the storage account key.

Install the Azure Site Recovery Provider on each virtual machine and register the virtual machines.



B. Download the installation file for the Azure Site Recovery Provider.

Download the vault registration key.

Install the Azure Site Recovery Provider on Host1 and register the server.

C. Download the installation file for the Azure Site Recovery Provider.

Download the storage account key.

Install the Azure Site Recovery Provider on Host1 and register the server.

D. Download the installation file for the Azure Site Recovery Provider.

Download the vault registration key.

Install the Azure Site Recovery Provider on each virtual machine and register the virtual machines.

Correct Answer: B

References: <https://docs.microsoft.com/en-us/azure/site-recovery/hyper-v-azure-tutorial>

[AZ-300 PDF Dumps](#)

[AZ-300 Study Guide](#)

[AZ-300 Braindumps](#)





To Read the [Whole Q&As](#), please purchase the [Complete Version](#) from [Our website](#).

## Try our product !

100% Guaranteed Success  
100% Money Back Guarantee  
365 Days Free Update  
Instant Download After Purchase  
24x7 Customer Support  
Average 99.9% Success Rate  
More than 800,000 Satisfied Customers Worldwide  
Multi-Platform capabilities - [Windows](#), [Mac](#), [Android](#), [iPhone](#), [iPod](#), [iPad](#), [Kindle](#)

We provide exam PDF and VCE of Cisco, Microsoft, IBM, CompTIA, Oracle and other IT Certifications. You can view Vendor list of All Certification Exams offered:

<https://www.passapply.com/allproducts>

## Need Help

Please provide as much detail as possible so we can best assist you.  
To update a previously submitted ticket:



 <p><b>One Year Free Update</b> Free update is available within One Year after your purchase. After One Year, you will get 50% discounts for updating. And we are proud to boast a 24/7 efficient Customer Support system via Email.</p>	 <p><b>Money Back Guarantee</b> To ensure that you are spending on quality products, we provide 100% money back guarantee for 30 days from the date of purchase.</p>	 <p><b>Security &amp; Privacy</b> We respect customer privacy. We use McAfee's security service to provide you with utmost security for your personal information &amp; peace of mind.</p>
---	---	--

Any charges made through this site will appear as Global Simulators Limited.  
All trademarks are the property of their respective owners.  
Copyright © passapply, All Rights Reserved.