



AZ-300^{Q&As}

Microsoft Azure Architect Technologies

Pass Microsoft AZ-300 Exam with 100% Guarantee

Free Download Real Questions & Answers **PDF** and **VCE** file from:

<https://www.passapply.com/az-300.html>

100% Passing Guarantee
100% Money Back Assurance

Following Questions and Answers are all new published by Microsoft
Official Exam Center

-  **Instant Download** After Purchase
-  **100% Money Back** Guarantee
-  **365 Days** Free Update
-  **800,000+** Satisfied Customers

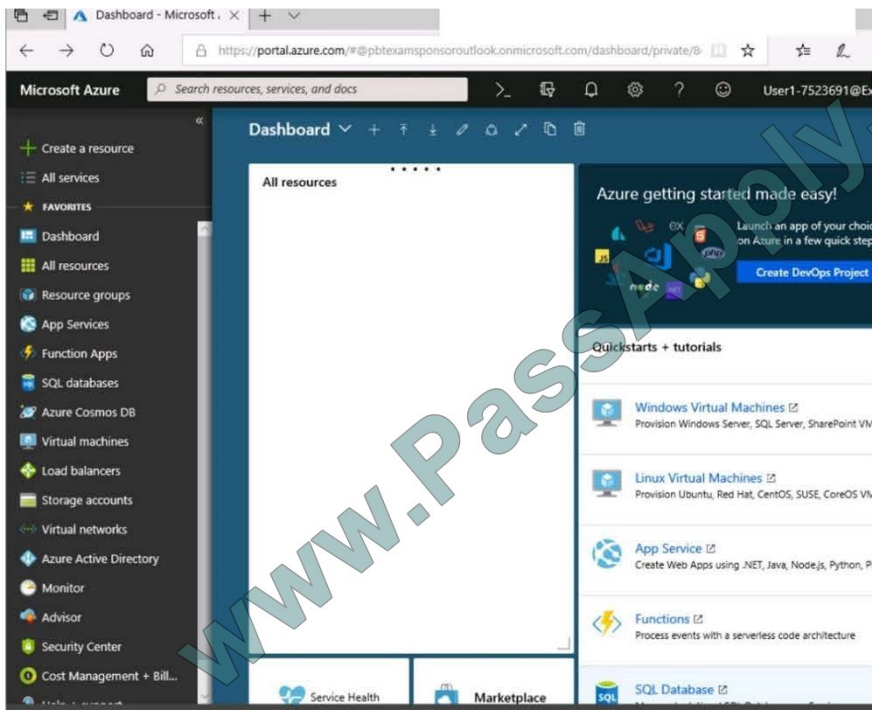
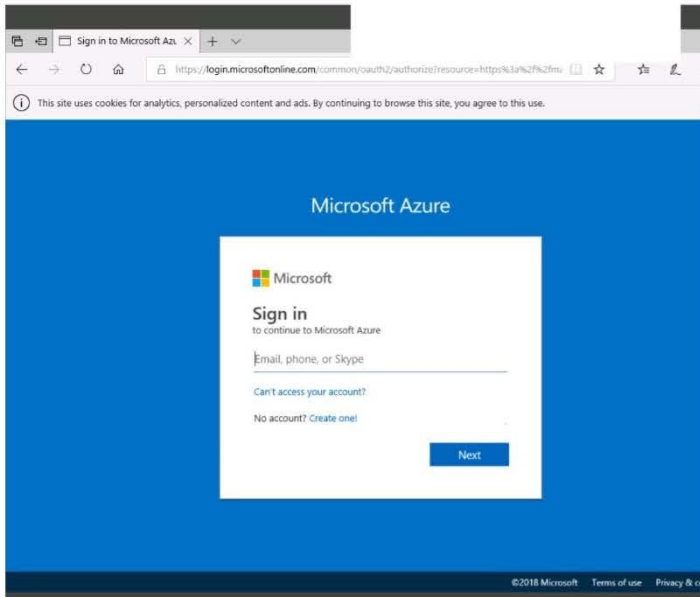




QUESTION 1

SIMULATION

Click to expand each objective. To connect to the Azure portal, type <https://portal.azure.com> in the browser address bar.





Home > Storage accounts > Create storage account

Create storage account

✓ Validation passed

Basics Advanced Tags Review + create

BASICS

Subscription	Microsoft AZ-100 5
Resource group	corpdataod7523690
Location	East US
Storage account name	corpdata7523690n1
Deployment model	Resource manager
Account kind	StorageV2 (general purpose v2)
Replication	Read-access geo-redundant storage (RA-GRS)
Performance	Standard
Access tier (default)	Hot

ADVANCED

Secure transfer required	Enabled
Hierarchical namespace	Disabled

Create

Previous

Next

Download a template for automation

Home > Storage accounts > Create storage account

Create storage account

*** Submitting deployment...
Submitting the deployment template for resource 'corpdataod7523690'.

Basics Advanced Tags Review + create

BASICS

Subscription	Microsoft AZ-100 5
Resource group	corpdataod7523690
Location	East US
Storage account name	corpdata7523690n1
Deployment model	Resource manager
Account kind	StorageV2 (general purpose v2)
Replication	Read-access geo-redundant storage (RA-GRS)
Performance	Standard
Access tier (default)	Hot

ADVANCED

Secure transfer required	Enabled
Hierarchical namespace	Disabled

Home > Microsoft.StorageAccount-20181011170335 - Overview

Microsoft.StorageAccount-20181011170335 - Overview

Deployment

Search (Ctrl+/) Delete Cancel Redeploy Refresh

Overview

Outputs

Inputs

Template

*** Your deployment is underway

Check the status of your deployment, manage resources, or troubleshoot deployment issues. Pin this page to your dashboard to easily find it next time.

Deployment name: Microsoft.StorageAccount-20181011170335
Subscription: Microsoft AZ-100 5
Resource group: corpdataod7523690

DEPLOYMENT DETAILS (Download)

Start time: 10/11/2018 5:04:06 PM
Duration: 17 seconds
Correlation ID: bd0806a4-d1bd-42db-be6b-55e0ec38f49b

RESOURCE	TYPE	STATUS	OPERATI...
----------	------	--------	------------

No results.



Home > Virtual machines > Create a virtual machine

Create a virtual machine

! Validation failed. Required information is missing or not valid.

Basics • Disks Networking Management Guest config Tags **Review + create**

PRODUCT DETAILS

Ubuntu Server 18.04 LTS

by Canonical

[Terms of use](#) | [Privacy policy](#)

Pricing not available for this offering

View [Pricing details](#) for more information.

Standard D2s v3

by Microsoft

[Terms of use](#) | [Privacy policy](#)

Subscription credits apply ⓘ

0.0960 USD/hr

[Pricing for other VM sizes](#)

TERMS

By clicking "Create", I (a) agree to the legal terms and privacy statement(s) associated with the Marketplace offering(s) listed above; (b) authorize Microsoft to bill my current payment method for the fees associated with the offering(s), with the same billing frequency as my Azure subscription; and (c) agree that Microsoft may share my contact, usage and transactional information with the provider(s) of the offering(s) for support, billing and other transactional activities. Microsoft does not provide rights for third-party offerings. See the [Azure Marketplace Terms](#) for additional details.

When you are finished performing all the tasks, click the `Next` button.

Note that you cannot return to the lab once you click the `Next` button. Scoring occurs in the background while you complete the rest of the exam.

Overview

The following section of the exam is a lab. In this section, you will perform a set of tasks in a live environment. While most functionality will be available to you as it would be in a live environment, some functionality (e.g., copy and paste, ability

to navigate to external websites) will not be possible by design.

Scoring is based on the outcome of performing the tasks stated in the lab. In other words, it doesn't matter how you accomplish the task, if you successfully perform it, you will earn credit for that task. Labs are not timed separately, and this

exam may have more than one lab that you must complete. You can use as much time as you would like to complete each lab. But, you should manage your time appropriately to ensure that you are able to complete the lab(s) and all other

sections of the exam in the time provided.



Please note that once you submit your work by clicking the Next button within a lab, you will NOT be able to return to the lab.

To start the lab

You may start the lab by clicking the Next button.

You need to create a virtual network named VNET1008 that contains three subnets named subnet0, subnet1, and subnet2. The solution must meet the following requirements:

Connections from any of the subnets to the Internet must be blocked

Connections from the Internet to any of the subnets must be blocked

The number of network security groups (NSGs) and NSG rules must be minimized

What should you do from the Azure portal?

Correct Answer:

QUESTION 2

Note: This question is part of series of questions that present the same scenario. Each question in the series contains a unique solution that might meet the stated goals. Some question sets might have more than one correct solution, while others might not have a correct solution.

After you answer a question in this section, you will NOT be able to return to it. As a result, these questions will not appear in the review screen.

You have an Azure subscription named Subscription1. Subscription1 contains a resource group named RG1. RG1 contains resources that were deployed by using templates.

You need to view the date and time when the resources were created in RG1.

Solution: From the RG1 blade, you click Automation script.

Does this meet the goal?

A. Yes

B. No

Correct Answer: B

QUESTION 3

You need to implement Role1.

Which command should you run before you create Role1? To answer, select the appropriate options in the answer area.

NOTE: Each correct selection ?worth one point.



Hot Area:



Correct Answer:



Explanation



QUESTION 4

HOTSPOT

Your company runs several Windows and Linux virtual machines (VMs).

You must design a solution that implements data privacy, compliance, and data sovereignty for all storage uses in Azure. You plan to secure all Azure storage accounts by using Role-Based Access Controls (RBAC) and Azure Active Directory (Azure AD).

You need to secure the data used by the VMs.

Which solution should you use? To answer, select the appropriate solutions in the answer area.

NOTE: Each correct selection is worth one point.

Hot Area:



Answer Area

VM data

Solution

Boot and data volume

	▼
Azure Storage Service Encryption	
Azure Disk Encryption	
Azure Information Protection	
Azure AD	

Data written to Azure Storage

	▼
Azure Storage Service Encryption	
Azure Disk Encryption	
Shared Access Signature (SAS)	
Network Security Group (NSG)	

Encryption keys and secrets

	▼
Azure Storage Service Encryption	
Azure Disk Encryption	
Azure Key Vault	
Azure Security Center	

Correct Answer:



Answer Area

VM data

Solution

Boot and data volume

	▼
Azure Storage Service Encryption	
Azure Disk Encryption	
Azure Information Protection	
Azure AD	

Data written to Azure Storage

	▼
Azure Storage Service Encryption	
Azure Disk Encryption	
Shared Access Signature (SAS)	
Network Security Group (NSG)	

Encryption keys and secrets

	▼
Azure Storage Service Encryption	
Azure Disk Encryption	
Azure Key Vault	
Azure Security Center	

References: <https://docs.microsoft.com/en-us/azure/security/security-storage-overview>

QUESTION 5

Note: This question is part of a series of questions that present the same scenario. Each question in the series contains a unique solution.

Determine whether the solution meets the stated goals.

You have the following resource groups:



Resource group	Comments
DevServer_WestCentralUS	This resource group is located in the West Central US region and contains a single virtual machine named DevServer. DevServer is connected to a private subnet in an Azure Virtual Network that has no internet access.
Workstation_EastUs	This resource group is located in the East US region and contains a virtual machine named DevWorkstation. DevWorkstation is connected to a subnet in a Virtual Network and is configured with a public IP address. A network security group has been configured to allow public incoming remote desktop protocol (RDP) connections to the DevWorkstation.

Developers must connect to DevServer only through DevWorkstation. To maintain security, DevServer must not accept connections from the internet.

You need to create a private connection between the DevWokstation and DevServer.

Solution: Configure a public IP address on DevServer_WestCentral. Configure the Network Security Group to allow all incoming ports.

Does the solution meet the goal?

A. Yes

B. NO

Correct Answer: A

[Latest AZ-300 Dumps](#)

[AZ-300 PDF Dumps](#)

[AZ-300 Braindumps](#)



To Read the [Whole Q&As](#), please purchase the [Complete Version](#) from [Our website](#).

Try our product !

100% Guaranteed Success
100% Money Back Guarantee
365 Days Free Update
Instant Download After Purchase
24x7 Customer Support
Average 99.9% Success Rate
More than 800,000 Satisfied Customers Worldwide
Multi-Platform capabilities - [Windows](#), [Mac](#), [Android](#), [iPhone](#), [iPod](#), [iPad](#), [Kindle](#)

We provide exam PDF and VCE of Cisco, Microsoft, IBM, CompTIA, Oracle and other IT Certifications. You can view Vendor list of All Certification Exams offered:

<https://www.passapply.com/allproducts>

Need Help

Please provide as much detail as possible so we can best assist you.
To update a previously submitted ticket:



 <p>One Year Free Update Free update is available within One Year after your purchase. After One Year, you will get 50% discounts for updating. And we are proud to boast a 24/7 efficient Customer Support system via Email.</p>	 <p>Money Back Guarantee To ensure that you are spending on quality products, we provide 100% money back guarantee for 30 days from the date of purchase.</p>	 <p>Security & Privacy We respect customer privacy. We use McAfee's security service to provide you with utmost security for your personal information & peace of mind.</p>
---	---	--

Any charges made through this site will appear as Global Simulators Limited.
All trademarks are the property of their respective owners.
Copyright © passapply, All Rights Reserved.