



AZ-103^{Q&As}

Microsoft Azure Administrator

Pass Microsoft AZ-103 Exam with 100% Guarantee

Free Download Real Questions & Answers **PDF** and **VCE** file from:

<https://www.passapply.com/az-103.html>

100% Passing Guarantee
100% Money Back Assurance

Following Questions and Answers are all new published by Microsoft
Official Exam Center

-  **Instant Download** After Purchase
-  **100% Money Back** Guarantee
-  **365 Days** Free Update
-  **800,000+** Satisfied Customers





QUESTION 1

Your on-premises network contains an Active Directory domain named adatum.com that is synced to Azure Active Directory (Azure AD). Password writeback is disabled. In adatum.com, you create the users shown in the following table.

Name	Account option
User1	User must change password at next logon.
User2	Store password by using reversible encryption.
User3	A smart card is required for interactive logon.

Which users must sign in from a computer joined to adatum.com?

- A. User2 only
- B. User1 and User3 only
- C. User1, User2, and User3
- D. User2 and User3 only
- E. User1 only

Correct Answer: E

Password writeback is a feature enabled with Azure AD Connect that allows password changes in the cloud to be written back to an existing on-premises directory in real time.

References: <https://docs.microsoft.com/en-us/azure/active-directory/authentication/concept-sspr-writeback>

QUESTION 2

Lab 1 SIMULATION The following section of the exam is a lab. In this section, you will perform a set of tasks in a live environment. While most functionality will be available to you as it would be in a live environment, some functionality (e.g., copy and paste, ability to navigate to external websites) will not be possible by design. Scoring is based on the outcome of performing the tasks stated in the lab. In other words, it doesn't matter how you accomplish the task, if you successfully perform it, you will earn credit for that task. Labs are not timed separately, and this exam may have more than one lab that you must complete. You can use as much time as you would like to complete each lab. But, you should manage your time appropriately to ensure that you are able to complete the lab(s) and all other sections of the exam in the time provided. Please, note that once you submit your work by clicking the Next button within a lab, you will NOT be able to return to the lab. To start the lab You may start lab by clicking the Next button Tasks Click to expand each objective

To connect to the Azure portal, type <https://portal.azure.com> in the browser address bar. Instructions Performance Based Lab This type of question asks you to perform tasks in a virtual environment. The screen for this type of question includes a virtual machine window and a tasks pane. The window is a remotely connected live environment where you perform tasks on real software and applications. On the right is a Tasks pane that lists the tasks you need to perform in the lab. Each task can be expanded or collapsed using the "+" or "-" symbols. A checkbox is provided for each task. This is provided for convenience, so you can mark each task as you complete it. Tasks Click to expand each objective



-Configure servers Add the "Print and Document Services" role to server LON-SVR1, installing any required management features and enabling both Print and LPD Services. +Configure file and share access When you are finished performing all the tasks, click the `Next` button. Note that you cannot return to the lab once you click the `Next` button. Scoring occur in the background while you complete the rest of the exam. Comments Once the exam completes, the comment period will begin and you will have the opportunity to provide comments to Microsoft about the exam questions. To launch the comment period, click the "Finish" and then "Comment" buttons. To skip the comment period and the exam, click Exit. You can navigate to a question from the Review screen to provide a comment. Please, see the Review Screen tab in the Review Screen help Menu (which can be accessed from the Review Screen) for details on accessing questions from the Review Screen. To comment on a question, navigate to that question and click the Give Feedback icon. When you have entered your comment in the comment window, click Submit to close the window. To navigate to the Review screen again, click the Review button. You may navigate through all questions using the Next and Previous buttons. To skip commenting, go to the Review Screen by selecting the Review Screen button in the upper left-hand corner and from the Review Screen, select "Finished". Controls Available For any question, one or more of the following controls might be available.

Control	Function
Next button	Completes the lab section and initiates scoring (in the background), then moves you to the next question or section of the exam
Help button	Opens a Help window for the type of question you are currently viewing. (This button is present only when an exhibit is available.)
Exhibit	Opens an exhibit for the question you are currently viewing. (This button is present only when an exhibit is available.)
Lab Keys	Opens a pop-up window with specific keys or keyboard combinations directed at the virtual machine

Keyboard Shortcuts Available

Exam features may be accessed using keyboard shortcuts. The following table describes the keyboard shortcuts that are available during this exam.

Some keyboard shortcuts require that you press two or more keys at the same time. These keys are separated by a plus sign (+) in the table below.

For this...	Press
Calculator	Alt + O
Comment	Alt + C
End Review (X)	Alt + X
Exhibit	Alt + B
Exit	Alt + X
Help	Alt + H
Reset	Alt + T
Review	Alt + R
Start Comment	Alt + S



Home > App Services > functionapplod7509087fa

functionapplod7409087fa

Function Apps

"functionapplod7509087fa"

Microsoft AZ-101 3

Function Apps

functionapplod7509087...

Functions +

Proxies

Slots (preview)

+ New Function

f Functions

Search functions

Name

Status

No results

Home > Monitor – Autoscale > Autoscale setting

Autoscale setting

homepage (App Service plan)

Save Discard Disable autoscale Refresh

Configure Run history JSON Notify

Autoscale setting name
Resource group: Homepagelod7509087

Default Auto created scale condition 1

Delete warning: The very last or default recurrence rule cannot be deleted. Instead, you can disable autoscale to turn off autoscale.

Scale mode: Scale based on a metric Scale to a specific instance count

Scale out and scale in your instances based on metric. For example: 'Add a rule that increases instance count by 1 when CPU percentage is above 70%

Rules: It is recommended to have at least one scale in rule

+ Add a rule

Instance limits: Minimum: 1 Maximum: 1 Default: 1

Schedule: This scale condition is executed when none of the other scale condition(s) match

+ Add a scale condition

You need to prevent remote users from publishing via FTP to a function app named FunctionAppIod7509087f.



Remote users must be able to publish via FTPS.

What should you do from the Azure portal?

A. Answer: See below.

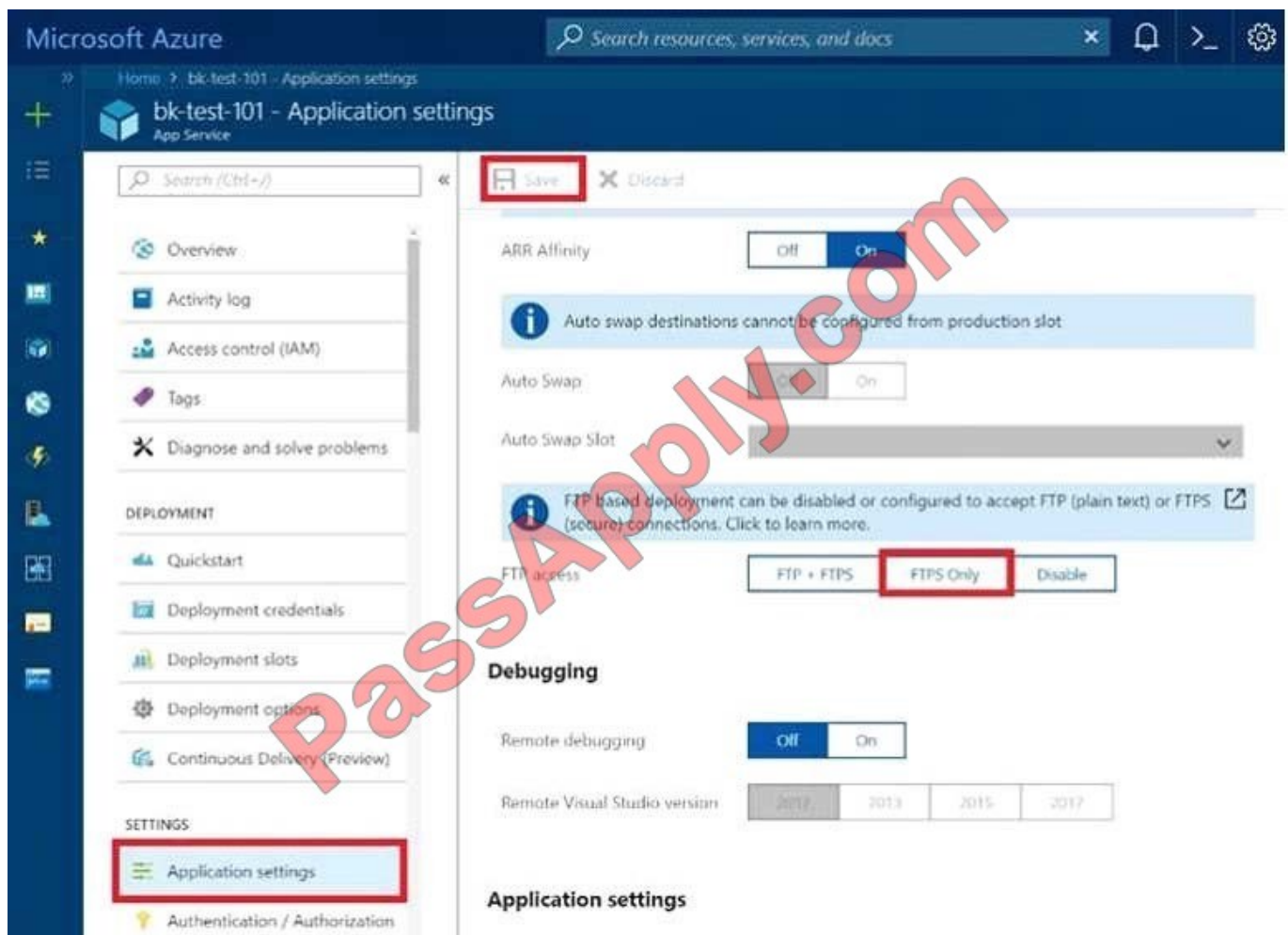
Correct Answer: A

Step 1:

Locate and select the function app FunctionApplod7509087fa.

Step 2:

Select Application Settings > FTP Access, change FTP access to FTPS Only, and click Save.



References:

<https://blogs.msdn.microsoft.com/appserviceteam/2018/05/08/web-apps-making-changes-to-ftp- deployments/>

QUESTION 3

Note: This question is part of a series of questions that present the same scenario. Each question in the series contains



a unique solution that might meet the stated goals. Some question sets might have more than one correct solution, while

others might not have a correct solution.

After you answer a question in this section, you will NOT be able to return to it. As a result, these questions will not appear in the review screen.

You have an Azure web app named Appl. App1 runs in an Azure App Service plan named Plan1. Plan1 is associated to the Free pricing tier.

You discover that App1 stops each day after running continuously for 60 minutes. You need to ensure that App1 can run continuously for the entire day. Solution: You change the pricing tier of Plan1 to Basic.

Does this meet the goal?

A. Yes

B. No

Correct Answer: A

The Free Tier provides 60 CPU minutes / day. This explains why App1 is stops. The Basic tier has no such cap.

References: <https://azure.microsoft.com/en-us/pricing/details/app-service/windows/>

QUESTION 4

You need to create a web app named corp7509086n2 that can be scaled horizontally. The solution must use the lowest possible pricing tier for the App Service plan.

What should you do from the Azure portal?

A. Answer: See below.

Correct Answer: A

Step 1:

In the Azure Portal, click Create a resource > Web + Mobile > Web App.

Step 2:

Use the Webb app settings as listed below.

Web App name: corp7509086n2

Hosting plan: Azure App Service plan

Pricing tier of the Pricing Tier: Standard

Change your hosting plan to Standard, you can't setup auto-scaling below standard tier.

Step 3:



Select Create to provision and deploy the Web app.

References:

<https://docs.microsoft.com/en-us/azure/app-service/environment/app-service-web-how-to-create-a-web-app-in-an-ase>

<https://azure.microsoft.com/en-us/pricing/details/app-service/plans/>

QUESTION 5

Case study (All of the QandAs in the ExamA are used this Casy Study)

This is a case study. Case studies are not timed separately. You can use as much exam time as you would like to complete each case. However, there may be additional case studies and sections on this exam. You must manage your time to ensure that you are able to complete all questions included on this exam in the time provided.

To answer the questions included in a case study, you will need to reference information that is provided in the case study. Case studies might contain exhibits and other resources that provide more information about the scenario that is described in the case study. Each question is independent of the other questions in this case study.

At the end of this case study, a review screen will appear. This screen allows you to review your answers and to make changes before you move to the next section of the exam. After you begin a new section, you cannot return to this section.

To start the case study To display the first question in this case study, click the Next button. Use the buttons in the left pane to explore the content of the case study before you answer the questions. Clicking these buttons displays information such as business requirements, existing environment, and problem statements. If the case study has an All Information tab, note that the information displayed is identical to the information displayed on the subsequent tabs. When you are ready to answer a question, click the Question button to return to the question.

Overview

Contoso, Ltd. is a manufacturing company that has offices worldwide. Contoso works with partner organizations to bring products to market.

Contoso products are manufactured by using blueprint files that the company authors and maintains.

Existing Environment

Currently, Contoso uses multiple types of servers for business operations, including the following:

1.

File servers

2.

Domain controllers

3.

Microsoft SQL Server servers

Your network contains an Active Directory forest named contoso.com. All servers and client computers are joined to Active Directory.



You have a public-facing application named App1. App1 is comprised of the following three tiers:

1.

A SQL database

2.

A web front end

3.

A processing middle tier

Each tier is comprised of five virtual machines. Users access the web front end by using HTTPS only.

Requirements

Planned Changes

Contoso plans to implement the following changes to the infrastructure:

1.

Move all the tiers of App1 to Azure.

2.

Move the existing product blueprint files to Azure Blob storage.

3.

Create a hybrid directory to support an upcoming Microsoft Office 365 migration project.

Technical Requirements

Contoso must meet the following technical requirements:

1.

Move all the virtual machines for App1 to Azure.

2.

Minimize the number of open ports between the App1 tiers.

3.

Ensure that all the virtual machines for App1 are protected by backups.

4.

Copy the blueprint files to Azure over the Internet.

5.

Ensure that the blueprint files are stored in the archive storage tier.



6.

Ensure that partner access to the blueprint files is secured and temporary.

7.

Prevent user passwords or hashes of passwords from being stored in Azure.

8.

Use unmanaged standard storage for the hard disks of the virtual machines.

9.

Ensure that when users join devices to Azure Active Directory (Azure AD), the users use a mobile phone to verify their identity 10. Minimize administrative effort whenever possible

User Requirements

Contoso identifies the following requirements for users:

1.

Ensure that only users who are part of a group named Pilot can join devices to Azure AD.

2.

Designate a new user named Admin1 as the service admin for the Azure subscription.

3.

Admin1 must receive email alerts regarding service outages.

4.

Ensure that a new user named User3 can create network objects for the Azure subscription.

You need to move the blueprint files to Azure. What should you do?

A. Generate a shared access signature (SAS). Map a drive, and then copy the files by using File Explorer.

B. Use the Azure Import/Export service.

C. Generate an access key. Map a drive, and then copy the files by using File Explorer.

D. Use Azure Storage Explorer to copy the files.

Correct Answer: D

Azure Storage Explorer is a free tool from Microsoft that allows you to work with Azure Storage data on Windows, macOS, and Linux. You can use it to upload and download data from Azure blob storage.

Scenario:

Planned Changes include: move the existing product blueprint files to Azure Blob storage. Technical Requirements include: Copy the blueprint files to Azure over the Internet.



References: <https://docs.microsoft.com/en-us/azure/machine-learning/team-data-science-process/move-data-to-azure-blob-using-azure-storage-explorer>

[AZ-103 PDF Dumps](#)

[AZ-103 VCE Dumps](#)

[AZ-103 Study Guide](#)



To Read the [Whole Q&As](#), please purchase the [Complete Version](#) from [Our website](#).

Try our product !

100% Guaranteed Success
100% Money Back Guarantee
365 Days Free Update
Instant Download After Purchase
24x7 Customer Support
Average 99.9% Success Rate
More than 800,000 Satisfied Customers Worldwide
Multi-Platform capabilities - [Windows](#), [Mac](#), [Android](#), [iPhone](#), [iPod](#), [iPad](#), [Kindle](#)

We provide exam PDF and VCE of Cisco, Microsoft, IBM, CompTIA, Oracle and other IT Certifications. You can view Vendor list of All Certification Exams offered:

<https://www.passapply.com/allproducts>

Need Help

Please provide as much detail as possible so we can best assist you.
To update a previously submitted ticket:



 <p>One Year Free Update Free update is available within One Year after your purchase. After One Year, you will get 50% discounts for updating. And we are proud to boast a 24/7 efficient Customer Support system via Email.</p>	 <p>Money Back Guarantee To ensure that you are spending on quality products, we provide 100% money back guarantee for 30 days from the date of purchase.</p>	 <p>Security & Privacy We respect customer privacy. We use McAfee's security service to provide you with utmost security for your personal information & peace of mind.</p>
---	---	--

Any charges made through this site will appear as Global Simulators Limited.
All trademarks are the property of their respective owners.
Copyright © passapply, All Rights Reserved.