



AZ-103^{Q&As}

Microsoft Azure Administrator

Pass Microsoft AZ-103 Exam with 100% Guarantee

Free Download Real Questions & Answers **PDF** and **VCE** file from:

<https://www.passapply.com/az-103.html>

100% Passing Guarantee
100% Money Back Assurance

Following Questions and Answers are all new published by Microsoft
Official Exam Center

-  **Instant Download** After Purchase
-  **100% Money Back** Guarantee
-  **365 Days** Free Update
-  **800,000+** Satisfied Customers





QUESTION 1

Lab 1 SIMULATION The following section of the exam is a lab. In this section, you will perform a set of tasks in a live environment. While most functionality will be available to you as it would be in a live environment, some functionality (e.g., copy and paste, ability to navigate to external websites) will not be possible by design. Scoring is based on the outcome of performing the tasks stated in the lab. In other words, it doesn't matter how you accomplish the task, if you successfully perform it, you will earn credit for that task. Labs are not timed separately, and this exam may have more than one lab that you must complete. You can use as much time as you would like to complete each lab. But, you should manage your time appropriately to ensure that you are able to complete the lab(s) and all other sections of the exam in the time provided. Please, note that once you submit your work by clicking the Next button within a lab, you will NOT be able to return to the lab. To start the lab You may start lab by clicking the Next button Tasks Click to expand each objective

To connect to the Azure portal, type <https://portal.azure.com> in the browser address bar. Instructions Performance Based Lab This type of question asks you to perform tasks in a virtual environment. The screen for this type of question includes a virtual machine window and a tasks pane. The window is a remotely connected live environment where you perform tasks on real software and applications. On the right is a Tasks pane that lists the tasks you need to perform in the lab. Each task can be expanded or collapsed using the "+" or "-" symbols. A checkbox is provided for each task. This is provided for convenience, so you can mark each task as you complete it. Tasks Click to expand each objective -Configure servers Add the "Print and Document Services" role to server LON-SVR1, installing any required management features and enabling both Print and LPD Services. +Configure file and share access When you are finished performing all the tasks, click the "Next" button. Note that you cannot return to the lab once you click the "Next" button. Scoring occur in the background while you complete the rest of the exam. Comments Once the exam completes, the comment period will begin and you will have the opportunity to provide comments to Microsoft about the exam questions. To launch the comment period, click the "Finish" and then "Comment" buttons. To skip the comment period and the exam, click Exit. You can navigate to a question from the Review screen to provide a comment. Please, see the Review Screen tab in the Review Screen help Menu (which can be accessed from the Review Screen) for details on accessing questions from the Review Screen. To comment on a question, navigate to that question and click the Give Feedback icon. When you have entered your comment in the comment window, click Submit to close the window. To navigate to the Review screen again, click the Review button. You may navigate through all questions using the Next and Previous buttons. To skip commenting, go to the Review Screen by selecting the Review Screen button in the upper left-hand corner and from the Review Screen, select "Finished". Controls Available For any question, one or more of the following controls might be available.

Control	Function
Next button	Completes the lab section and initiates scoring (in the background), then moves you to the next question or section of the exam
Help button	Opens a Help window for the type of question you are currently viewing. (This button is present only when an exhibit is available.)
Exhibit	Opens an exhibit for the question you are currently viewing. (This button is present only when an exhibit is available.)
Lab Keys	Opens a pop-up window with specific keys or keyboard combinations directed at the virtual machine

Keyboard Shortcuts Available

Exam features may be accessed using keyboard shortcuts. The following table describes the keyboard shortcuts that are available during this exam.



Some keyboard shortcuts require that you press two or more keys at the same time. These keys are separated by a plus sign (+) in the table below.

For this...	Press
Cal <u>cu</u> lator	Alt + O
<u>C</u> omment	Alt + C
End Review (<u>X</u>)	Alt + X
Ex <u>h</u> ibit	Alt + B
Ex <u>i</u> t	Alt + X
<u>H</u> elp	Alt + H
Res <u>e</u> t	Alt + T
<u>R</u> eview	Alt + R
<u>S</u> tart Comment	Alt + S



Home > App Services > functionapplod7509087fa

functionapplod7409087fa Function Apps

"functionapplod7509087fa"

Microsoft AZ-101 3

Function Apps

functionapplod7509087...

Functions +

Proxies

Slots (preview)

+ New Function

f Functions

Search functions

Name Status

No results

Home > Monitor – Autoscale > Autoscale setting

Autoscale setting

homepage (App Service plan)

Save Discard Disable autoscale Refresh

Configure Run history JSON Notify

Autoscale setting name
Resource group: Homepagelod7509087

Default Auto created scale condition 1

Delete warning: The very last or default recurrence rule cannot be deleted. Instead, you can disable autoscale to turn off autoscale.

Scale mode: Scale based on a metric Scale to a specific instance count

Scale out and scale in your instances based on metric. For example: 'Add a rule that increases instance count by 1 when CPU percentage is above 70%

Rules: It is recommended to have at least one scale in rule

+ Add a rule

Instance limits: Minimum: 1 Maximum: 1 Default: 1

Schedule: This scale condition is executed when none of the other scale condition(s) match

+ Add a scale condition

You need to prevent remote users from publishing via FTP to a function app named FunctionAppIod7509087f.



Remote users must be able to publish via FTPS.

What should you do from the Azure portal?

A. Answer: See below.

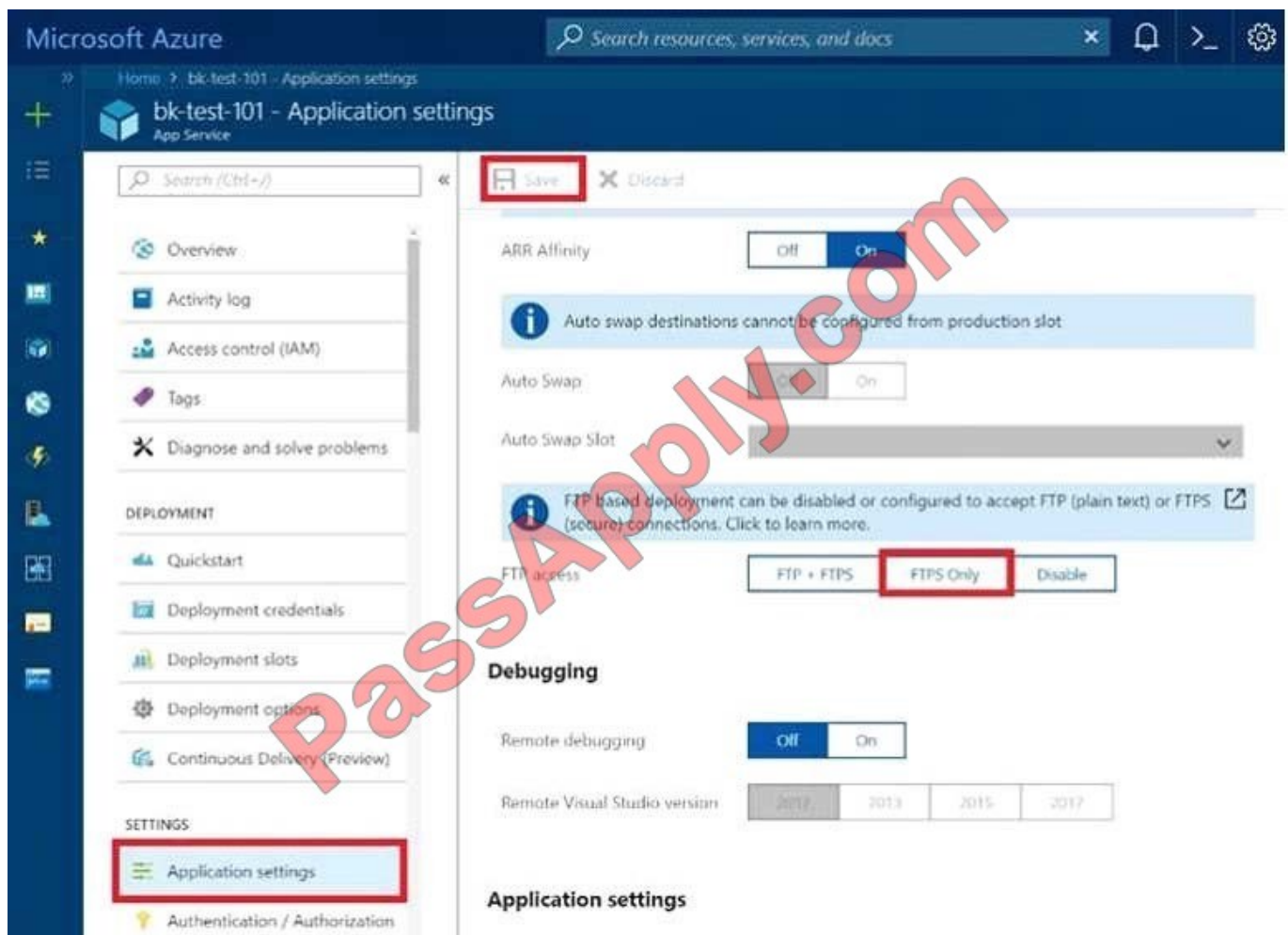
Correct Answer: A

Step 1:

Locate and select the function app FunctionApplod7509087fa.

Step 2:

Select Application Settings > FTP Access, change FTP access to FTPS Only, and click Save.



References:

<https://blogs.msdn.microsoft.com/appserviceteam/2018/05/08/web-apps-making-changes-to-ftp- deployments/>

QUESTION 2

You need to meet the user requirement for Admin1. What should you do?



- A. From the Subscriptions blade, select the subscription, and then modify the Properties.
- B. From the Subscriptions blade, select the subscription, and then modify the Access control (IAM) settings.
- C. From the Azure Active Directory blade, modify the Properties.
- D. From the Azure Active Directory blade, modify the Groups.

Correct Answer: A

Change the Service administrator for an Azure subscription

1.

Sign in to Account Center as the Account administrator.

2.

Select a subscription.

3.

On the right side, select Edit subscription details.

Scenario: Designate a new user named Admin1 as the service administrator of the Azure subscription.

References: <https://docs.microsoft.com/en-us/azure/billing/billing-add-change-azure-subscription-administrator>

QUESTION 3

SIMULATION

Please wait while the virtual machine loads. Once loaded, you may proceed to the lab section. This may take a few minutes, and the wait time will not be deducted from your overall test time.

When the Next button is available, click it to access the lab section. In this section, you will perform a set of tasks in a live environment. While most functionality will be available to you as it would be in a live environment, some functionality

(e.g, copy and paste, ability to navigate to external websites) will not be possible by design.

Scoring is based on the outcome of performing the tasks stated in the lab. In other words, it doesn't matter how you accomplish the task, if you successfully perform it, you will earn credit for that task.

Labs are not timed separately, and this exam may have more than one lab that you must complete. You can use as much time as you would like to complete each lab. But, you should manage your time appropriately to ensure that you are

able to complete the lab(s) and all other sections of the exam in the time provided.

Please note that once you submit your work by clicking the Next button within a lab, you will NOT be able to return to the lab.

You may now click next to proceed to the lab.



Use the following login credentials as needed:

Azure Username: XXXXXXXX

Azure Password: XXXXXXXX The following information is for technical support purposes only: Lab Instance: 9172796



Task 2

Your company plans to store several documents on a public website.

You need to create a container named bios that will host the documents in the storagelod9272261 storage account. The solution must ensure anonymous access and must ensure that users can browse folders in the container.

What should you do from the Azure portal?

A. Answer: See below.

Correct Answer: A

Azure portal create public container

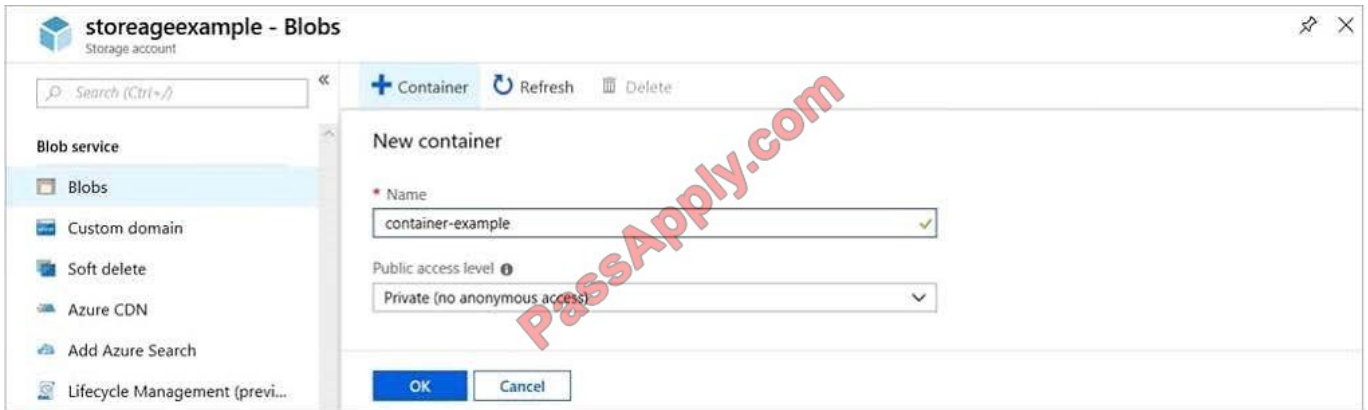
To create a container in the Azure portal, follow these steps:

Step 1. Navigate to your new storage account in the Azure portal. Step 2. In the left menu for the storage account, scroll to the blob service section, then select Blobs.

Select the + Container button.

Type a name for your new container: bios

Set the level of public access to the container: Select anonymous access.



Step 3. Select OK to create the container.

References: <https://docs.microsoft.com/en-us/azure/storage/blobs/storage-quickstart-blobs-portal>

QUESTION 4

Your network contains an Active Directory domain named adatum.com and an Azure Active Directory (Azure AD) tenant named adatum.onmicrosoft.com. Adatum.com contains the user accounts in the following table.

Name	Member of
User1	Domain Admins
User2	Schema Admins
User3	Incoming Forest Trust Builders
User4	Replicator
User5	Enterprise Admins

Adatum.onmicrosoft.com contains the user accounts in the following table.

Name	Role
UserA	Global administrator
UserB	User administrator
UserC	Security administrator
UserD	Service administrator

You need to implement Azure AD Connect. The solution must follow the principle of least privilege. Which user accounts should you use? To answer, select the appropriate options in the answer area; NOTE: Each correct selection is worth one point.

Hot Area:



Answer Area

Adatum.com:

	▼
User1	
User2	
User3	
User4	
User5	

Adatum.onmicrosoft.com:

	▼
UserA	
UserB	
UserC	
UserD	

Correct Answer:

Answer Area

Adatum.com:

	▼
User1	
User2	
User3	
User4	
User5	

Adatum.onmicrosoft.com:

	▼
UserA	
UserB	
UserC	
UserD	

Box 1: User5 In Express settings, the installation wizard asks for the following: AD DS Enterprise Administrator credentials Azure AD Global Administrator credentials The AD DS Enterprise Admin account is used to configure your on-premises Active Directory. These credentials are only used during the installation and are not used after the installation has completed. The Enterprise Admin, not the Domain Admin should make sure the permissions in Active Directory can be set in all domains. Box 2: UserA Azure AD Global Admin credentials credentials are only used during the installation and are not used after the installation has completed. It is used to create the Azure AD Connector account used for synchronizing changes to Azure AD. The account also enables sync as a feature in Azure AD.

References: <https://docs.microsoft.com/en-us/azure/active-directory/connect/active-directory-aadconnect-accounts-permissions>



QUESTION 5

HOTSPOT

You have an Azure subscription named Subscription1 that is associated to an Azure Active Directory (Azure AD) tenant named AAD1.

Subscription1 contains the objects in the following table:

Name	Type
Share1	Azure file share
Account1	Azure Storage account
RG1	Resource group
Vault1	Recovery Services vault

You plan to create a single backup policy for Vault1. To answer, select the appropriate options in the answer area;

NOTE: Each correct selection is worth one point.

You have an Azure subscription named Subscription1 that is associated to an Azure Active Directory (Azure AD) tenant named AAD1.

Subscription1 contains the objects in the following table.

Hot Area:

You can create an Azure backup policy for:

	▼
AAD1 only	
Account1 only	
RG1 only	
Share1 only	
AAD1 and Share1 only	
AAD1, Share1 and Account1 only	
AAD1, Share1, Account1, and RG1	

In the backup policy that you create, you can configure the backups to be retained for up to:

	▼
7 days	
31 days	
90 days	
120 days	
365 days	
99 years	

Correct Answer:



You can create an Azure backup policy for:

	▼
AAD1 only	
Account1 only	
RG1 only	
Share1 only	
AAD1 and Share1 only	
AAD1, Share1 and Account1 only	
AAD1, Share1, Account1, and RG1	

In the backup policy that you create, you can configure the backups to be retained for up to:

	▼
7 days	
31 days	
90 days	
120 days	
365 days	
99 years	

Box 1: Share1 only

Box 2: 99 years

With the latest update to Azure Backup, customers can retain their data for up to 99 years in Azure.

Note: A backup policy defines a matrix of when the data snapshots are taken, and how long those snapshots are retained.



* Policy name

Backup frequency
Daily 5:30 AM Local Time (UTC-07:00)

Retention range

Retention of daily backup point.

* At For Day(s)
5:30 AM 180

Retention of weekly backup point.

* On * At For Week(s)
Sunday 5:30 AM 104

Retention of monthly backup point.

Week Based Day Based

* On * Day * At For Month(s)
First Sunday 5:30 AM 60

Retention of yearly backup point.

Week Based Day Based

* In * On * Day * At For Year(s)
January First Sunday 5:30 AM 10

The backup policy interface looks like this:

References:

<https://docs.microsoft.com/en-us/azure/backup/backup-azure-files>

<https://docs.microsoft.com/en-us/azure/backup/backup-azure-vms-first-look-arm#defining-a-backup-policy>

<https://blogs.microsoft.com/firehose/2015/02/16/february-update-to-azure-backup-includes-data-retention-up-to-99-years-offline-backup-and-more/>

[AZ-103 Practice Test](#)

[AZ-103 Study Guide](#)

[AZ-103 Exam Questions](#)



To Read the [Whole Q&As](#), please purchase the [Complete Version](#) from [Our website](#).

Try our product !

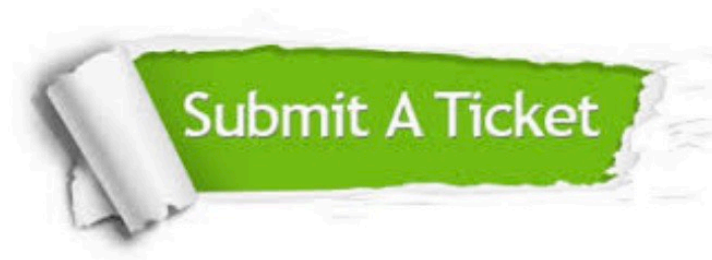
100% Guaranteed Success
100% Money Back Guarantee
365 Days Free Update
Instant Download After Purchase
24x7 Customer Support
Average 99.9% Success Rate
More than 800,000 Satisfied Customers Worldwide
Multi-Platform capabilities - [Windows](#), [Mac](#), [Android](#), [iPhone](#), [iPod](#), [iPad](#), [Kindle](#)

We provide exam PDF and VCE of Cisco, Microsoft, IBM, CompTIA, Oracle and other IT Certifications. You can view Vendor list of All Certification Exams offered:

<https://www.passapply.com/allproducts>

Need Help

Please provide as much detail as possible so we can best assist you.
To update a previously submitted ticket:



 <p>One Year Free Update Free update is available within One Year after your purchase. After One Year, you will get 50% discounts for updating. And we are proud to boast a 24/7 efficient Customer Support system via Email.</p>	 <p>Money Back Guarantee To ensure that you are spending on quality products, we provide 100% money back guarantee for 30 days from the date of purchase.</p>	 <p>Security & Privacy We respect customer privacy. We use McAfee's security service to provide you with utmost security for your personal information & peace of mind.</p>
---	---	--

Any charges made through this site will appear as Global Simulators Limited.
All trademarks are the property of their respective owners.
Copyright © passapply, All Rights Reserved.