



AZ-101^{Q&As}

Microsoft Azure Integration and Security

Pass Microsoft AZ-101 Exam with 100% Guarantee

Free Download Real Questions & Answers **PDF** and **VCE** file from:

<https://www.passapply.com/az-101.html>

100% Passing Guarantee
100% Money Back Assurance

Following Questions and Answers are all new published by Microsoft
Official Exam Center

-  **Instant Download** After Purchase
-  **100% Money Back** Guarantee
-  **365 Days** Free Update
-  **800,000+** Satisfied Customers





QUESTION 1

DRAG DROP

You need to configure the Azure ExpressRoute circuits.

How should you configure Azure ExpressRoute routing? To answer, drag the appropriate configurations to the correct locations. Each configuration may be used once, more than once, or not at all. You may need to drag the split bar between

panes or scroll to view content.

NOTE: Each correct selection is worth one point.

Select and Place:

Configurations

Use BGP communities to configure BGP's Local Preference.

Use BGP to append the private AS numbers to the advertised prefixes.

Use BGP to append the public AS numbers to the advertised prefixes.

Answer Area

Routing from ADatum to Azure:

Configuration

Routing from Microsoft Online Services to Adatum:

Configuration

Correct Answer:

Configurations

Use BGP to append the public AS numbers to the advertised prefixes.

Answer Area

Routing from ADatum to Azure:

Use BGP to append the private AS numbers to the advertised prefixes.

Routing from Microsoft Online Services to Adatum:

Use BGP communities to configure BGP's Local Preference.

QUESTION 2

You have an Azure subscription named Subscription1.

In Subscription1, you create an Azure web app named WebApp1. WebApp1 will access an external service that requires certificate authentication.

You plan to require the use of HTTPS to access WebApp1.

You need to upload certificates to WebApp1.

In which formats should you upload the certificate? To answer, select the appropriate options in the answer area.

NOTE: Each correct selection is worth one point.



Hot Area:

Answer Area

Certificate format for HTTPS access:

▼
CER
CRL
CRT
PFX

Certificate format for external service access:

▼
CER
CRL
CRT
PFX

Correct Answer:

Answer Area

Certificate format for HTTPS access:

▼
CER
CRL
CRT
PFX

Certificate format for external service access:

▼
CER
CRL
CRT
PFX

A PFX file contains the public key file (SSL Certificate) and its unique private key file. This is required for HTTPS access. The web app will distribute the public key (in a CER file) to clients that connect to the web app. The CER file is an SSL Certificate which has the public key of the external service. The external service will have the private key associated with the public key contained in the CER file.



QUESTION 3

You have an Azure subscription that contains a policy-based virtual network gateway named GW1 and a virtual network named VNet1.

You need to ensure that you can configure a point-to-site connection from VNet1 to an on-premises computer.

Which two actions should you perform? Each correct answer presents part of the solution.

NOTE: Each correct selection is worth one point.

- A. Reset GW1.
- B. Add a service endpoint to VNet1.
- C. Add a connection to GW1.
- D. Add a public IP address space to VNet1.
- E. Delete GW1.
- F. Create a route-based virtual network gateway.

Correct Answer: EF

E: Policy-based VPN devices use the combinations of prefixes from both networks to define how traffic is encrypted/decrypted through IPsec tunnels. It is typically built on firewall devices that perform packet filtering. IPsec tunnel encryption and decryption are added to the packet filtering and processing engine.

F: A VPN gateway is used when creating a VPN connection to your on-premises network.

Route-based VPN devices use any-to-any (wildcard) traffic selectors, and let routing/forwarding tables direct traffic to different IPsec tunnels. It is typically built on router platforms where each IPsec tunnel is modeled as a network interface or

VTI (virtual tunnel interface).

Incorrect Answers:

D: Point-to-Site connections do not require a VPN device or a public-facing IP address.

References: <https://docs.microsoft.com/en-us/azure/vpn-gateway/create-routebased-vpn-gateway-portal>
<https://docs.microsoft.com/en-us/azure/vpn-gateway/vpn-gateway-connect-multiple-policybased-rm-ps>

QUESTION 4

You plan to grant the member of a new Azure AD group named crop 75099086 the right to delegate administrative access to any resource in the resource group named 7509086.

You need to create the Azure AD group and then to assign the correct to e to the group. The solution must use the principle of least privilege and minimize the number of role assignments.

What should you do from the Azure portal?

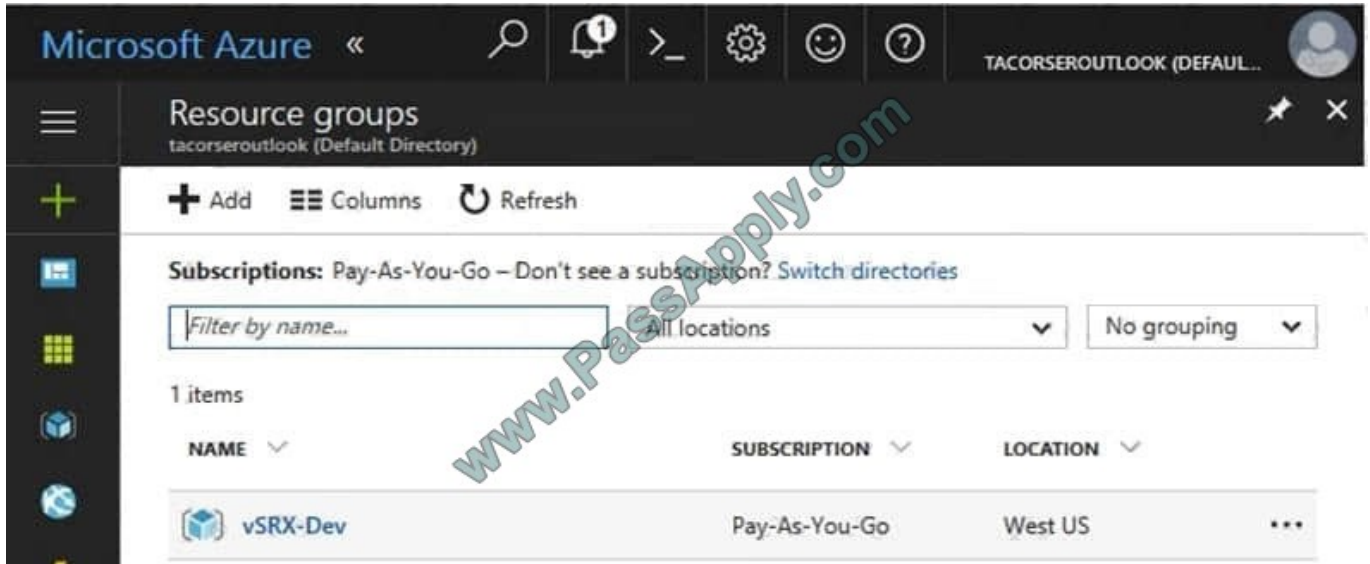
- A. Check the answer in explanantion.



Correct Answer: A

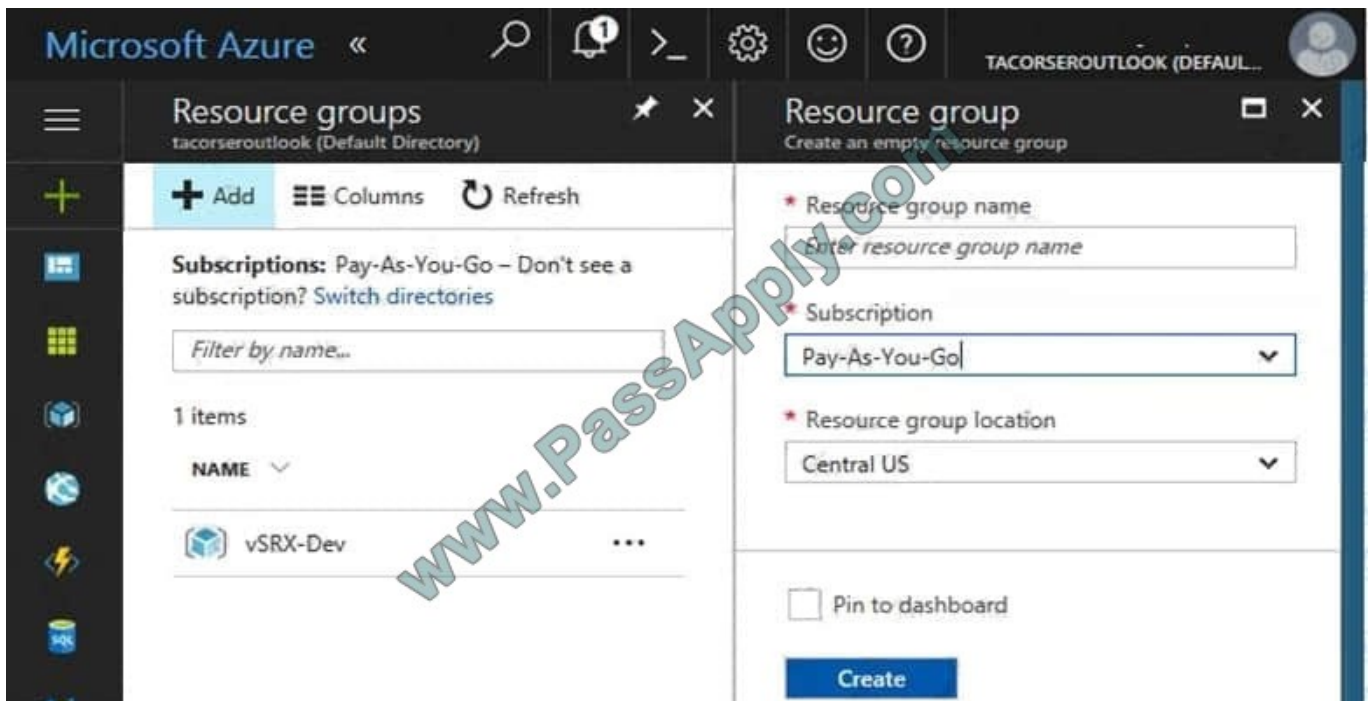
See below.

Step 1: Click Resource groups from the menu of services to access the Resource Groups blade



Step 2:

Click Add (+) to create a new resource group. The Create Resource Group blade appears. Enter corp7509086 as the Resource group name, and click the Create button.



Step 3:

Select Create.

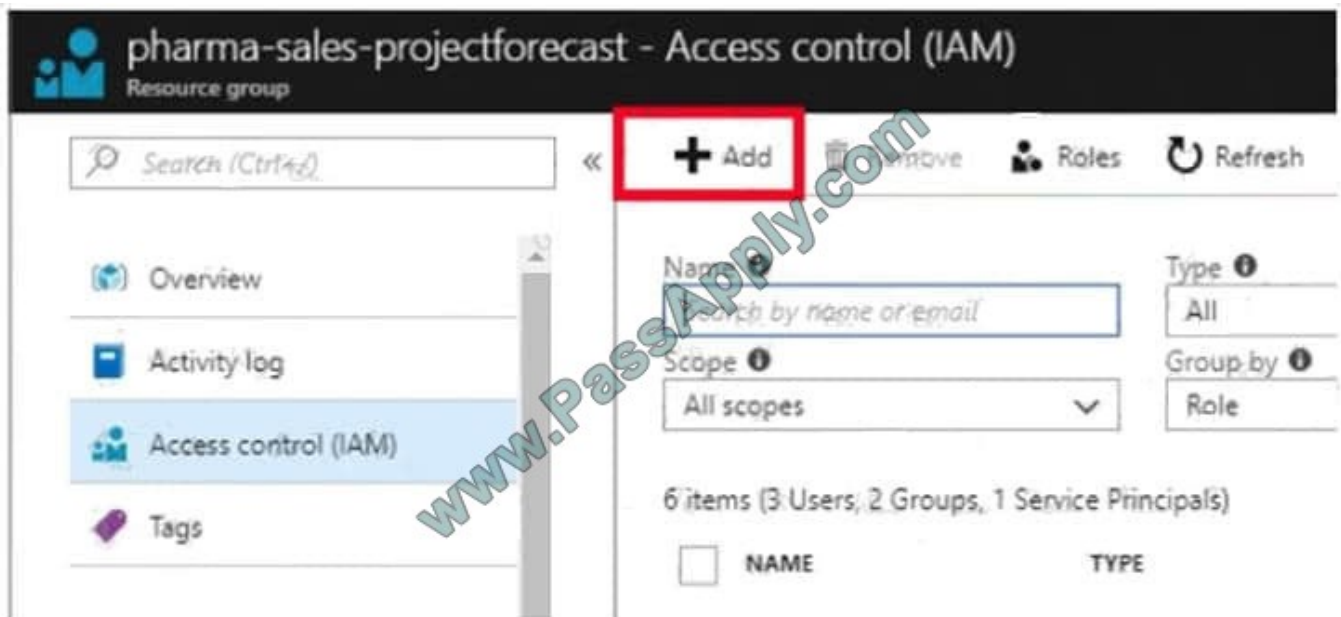


Your group is created and ready for you to add members.

Now we need to assign a role to this resource group scope.

Step 4:

Choose the newly created Resource group, and Access control (IAM) to see the current list of role assignments at the resource group scope. Click +Add to open the Add permissions pane.



Step 5:

In the Role drop-down list, select a role Delegate administration, and select Assign access to: resource group corp7509086



References:



<https://docs.microsoft.com/en-us/azure/role-based-access-control/role-assignments-portal> https://www.juniper.net/documentation/en_US/vsrx/topics/task/multi-task/security-vsrx-azure-marketplace-resource-group.html

QUESTION 5

Note: This question is part of a series of questions that present the same scenario. Each question in the series contains a unique solution that might meet the stated goals. Some question sets might have more than one correct solution, while

others might not have a correct solution.

After you answer a question in this section, you will NOT be able to return to it. As a result, these questions will not appear in the review screen.

You manage a virtual network named VNet1 that is hosted in the West US Azure region.

VNet1 hosts two virtual machines named VM1 and VM2 that run Windows Server.

You need to inspect all the network traffic from VM1 to VM2 for a period of three hours.

Solution: From Azure Monitor, you create a metric on Network In and Network Out.

Does this meet the goal?

A. Yes

B. No

Correct Answer: B

You should use Azure Network Watcher.

References: <https://docs.microsoft.com/en-us/azure/network-watcher/network-watcher-monitoring-overview>

[AZ-101 PDF Dumps](#)

[AZ-101 VCE Dumps](#)

[AZ-101 Study Guide](#)



To Read the [Whole Q&As](#), please purchase the [Complete Version](#) from [Our website](#).

Try our product !

100% Guaranteed Success
100% Money Back Guarantee
365 Days Free Update
Instant Download After Purchase
24x7 Customer Support
Average 99.9% Success Rate
More than 800,000 Satisfied Customers Worldwide
Multi-Platform capabilities - [Windows](#), [Mac](#), [Android](#), [iPhone](#), [iPod](#), [iPad](#), [Kindle](#)

We provide exam PDF and VCE of Cisco, Microsoft, IBM, CompTIA, Oracle and other IT Certifications. You can view Vendor list of All Certification Exams offered:

<https://www.passapply.com/allproducts>

Need Help

Please provide as much detail as possible so we can best assist you.
To update a previously submitted ticket:



 <p>One Year Free Update Free update is available within One Year after your purchase. After One Year, you will get 50% discounts for updating. And we are proud to boast a 24/7 efficient Customer Support system via Email.</p>	 <p>Money Back Guarantee To ensure that you are spending on quality products, we provide 100% money back guarantee for 30 days from the date of purchase.</p>	 <p>Security & Privacy We respect customer privacy. We use McAfee's security service to provide you with utmost security for your personal information & peace of mind.</p>
---	---	--

Any charges made through this site will appear as Global Simulators Limited.
All trademarks are the property of their respective owners.
Copyright © passapply, All Rights Reserved.