



AZ-100^{Q&As}

Microsoft Azure Infrastructure and Deployment

Pass Microsoft AZ-100 Exam with 100% Guarantee

Free Download Real Questions & Answers **PDF** and **VCE** file from:

<https://www.passapply.com/az-100.html>

100% Passing Guarantee
100% Money Back Assurance

Following Questions and Answers are all new published by Microsoft
Official Exam Center

-  **Instant Download** After Purchase
-  **100% Money Back** Guarantee
-  **365 Days** Free Update
-  **800,000+** Satisfied Customers





QUESTION 1

HOTSPOT

You need to meet the connection requirements for the New York office.

What should you do? To answer, select the appropriate options in the answer area.

NOTE: Each correct selection is worth one point.

Hot Area:

Answer Area

From the Azure portal:

	▼
Create an ExpressRoute circuit only.	
Create a virtual network gateway only.	
Create a virtual network gateway and a local network gateway.	
Create an ExpressRoute circuit and an on-premises data gateway.	
Create a virtual network gateway and an on-premises data gateway.	

In the New York office:

	▼
Deploy ExpressRoute.	
Deploy a DirectAccess server.	
Implement a Web Application Proxy.	
Configure a site-to-site VPN connection.	

Correct Answer:



Answer Area

From the Azure portal:

	▼
Create an ExpressRoute circuit only.	
Create a virtual network gateway only.	
Create a virtual network gateway and a local network gateway.	
Create an ExpressRoute circuit and an on-premises data gateway.	
Create a virtual network gateway and an on-premises data gateway.	

In the New York office:

	▼
Deploy ExpressRoute.	
Deploy a DirectAccess server.	
Implement a Web Application Proxy.	
Configure a site-to-site VPN connection.	

QUESTION 2

You plan to back up an Azure virtual machine named VM1.

You discover that the Backup Pre-Check status displays a status of Warning.

What is a possible cause of the Warning status?

- A. VM1 does not have the latest version of WaAppAgent.exe installed.
- B. VM1 has an unmanaged disk.
- C. VM1 is stopped.
- D. A Recovery Services vault is unavailable.

Correct Answer: A

The Warning state indicates one or more issues in VM's configuration that might lead to backup failures and provides recommended steps to ensure successful backups. Not having the latest VM Agent installed, for example, can cause backups to fail intermittently and falls in this class of issues.

References: <https://azure.microsoft.com/en-us/blog/azure-vm-backup-pre-checks/>

QUESTION 3

HOTSPOT



You have an Azure subscription named Subscription1.

You plan to deploy an Ubuntu Server virtual machine named VM1 to Subscription1.

You need to perform a custom deployment of the virtual machine. A specific trusted root certification authority (CA) must be added during the deployment.

What should you do? To answer, select the appropriate options in the answer area.

NOTE: Each correct selection is worth one point.

Hot Area:

Answer Area

File to create:

	▼
Answer.ini	
Autounattend.conf	
Cloud-init.txt	
Unattend.xml	

Tool to use to deploy the virtual machine:

	▼
The az vm create command	
The Azure portal	
The New-AzureRmVM cmdlet	

Correct Answer:

Answer Area

File to create:

	▼
Answer.ini	
Autounattend.conf	
Cloud-init.txt	
Unattend.xml	

Tool to use to deploy the virtual machine:

	▼
The az vm create command	
The Azure portal	
The New-AzureRmVM cmdlet	

Explanation:

Box 1: Unattend.xml



In preparation to deploy shielded VMs, you may need to create an operating system specialization answer file. On Windows, this is commonly known as the "unattend.xml" file. The New-ShieldingDataAnswerFile Windows PowerShell function

helps you do this. Starting with Windows Server version 1709, you can run certain Linux guest OSes in shielded VMs. If you are using the System Center Virtual Machine Manager Linux agent to specialize those VMs, the New-

ShieldingDataAnswerFile cmdlet can create compatible answer files for it.

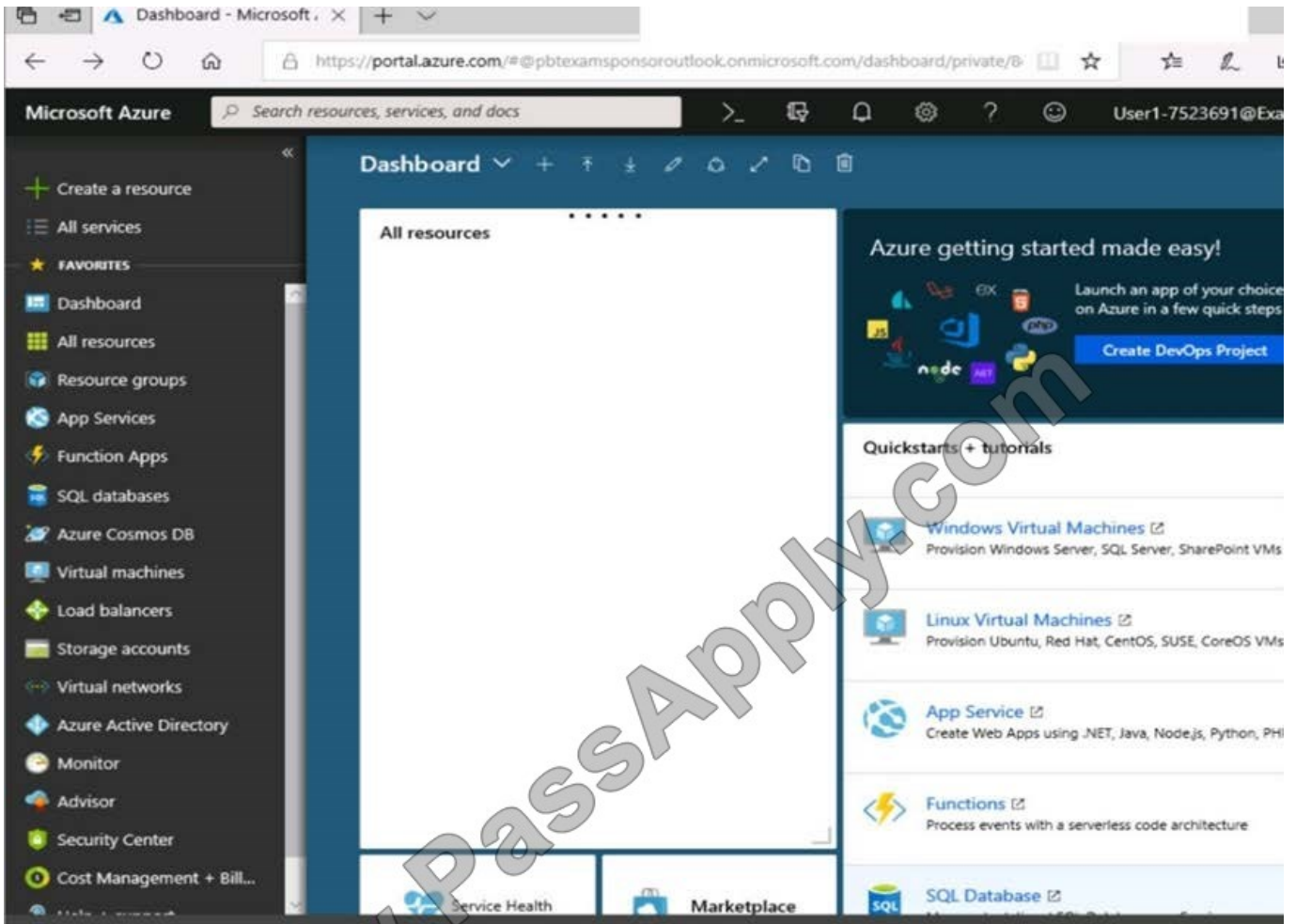
Box 2: The Azure Portal

You can use the Azure portal to deploy a Linux virtual machine (VM) in Azure that runs Ubuntu.

References: <https://docs.microsoft.com/en-us/azure/virtual-machines/linux/quick-create-portal>

QUESTION 4

SIMULATION Click to expand each objective. To connect to the Azure portal, type <https://portal.azure.com> in the browser address bar.



- Instructions
- Comments
- Controls Available
- Keyboard Shortcuts Available

Tasks

Click to expand each objective

- Configure servers
 - Add the "Print and Document Services" role to server LON-SVRT, installing any required management features and enabling both Print and LPD Services.
- + Configure file and share access

When you are finished performing all the tasks, click the "Next" button.

Note that you cannot return to the lab once you click the "Next" button. Scoring occurs in the background while you complete the rest of the exam.

Overview

The following section of the exam is a lab. In this section, you will perform a set of tasks in a live environment. While



most functionality will be available to you as it would be in a live environment, some functionality (e.g., copy and paste, ability to navigate to external websites) will not be possible by design. Scoring is based on the outcome of performing the tasks stated in the lab. In other words, it doesn't matter how you accomplish the task, if you successfully perform it, you will earn credit for that task.

Labs are not timed separately, and this exam may have more than one lab that you must complete. You can use as much time as you would like to complete each lab. But, you should manage your time appropriately to ensure that you are able to complete the lab(s) and all other sections of the exam in the time provided.

Please note that once you submit your work by clicking the Next button within a lab, you will NOT be able to return to the lab.

To start the lab

You may start the lab by clicking the Next button.

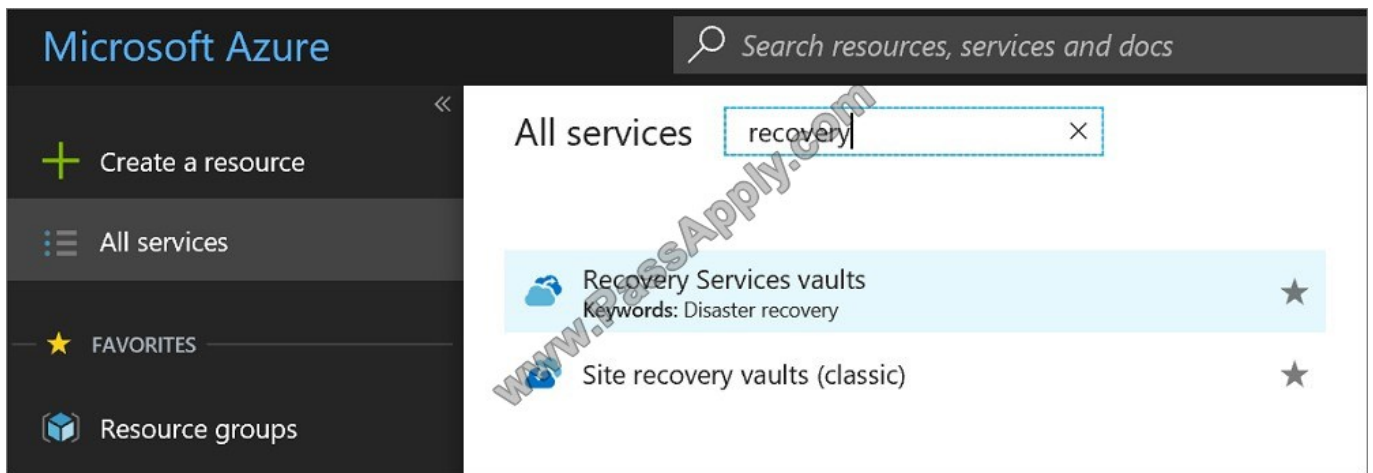
You plan to protect on-premises virtual machines and Azure virtual machines by using Azure Backup. You need to prepare the backup infrastructure in Azure. The solution must minimize the cost of storing the backups in Azure.

What should you do from the Azure portal?

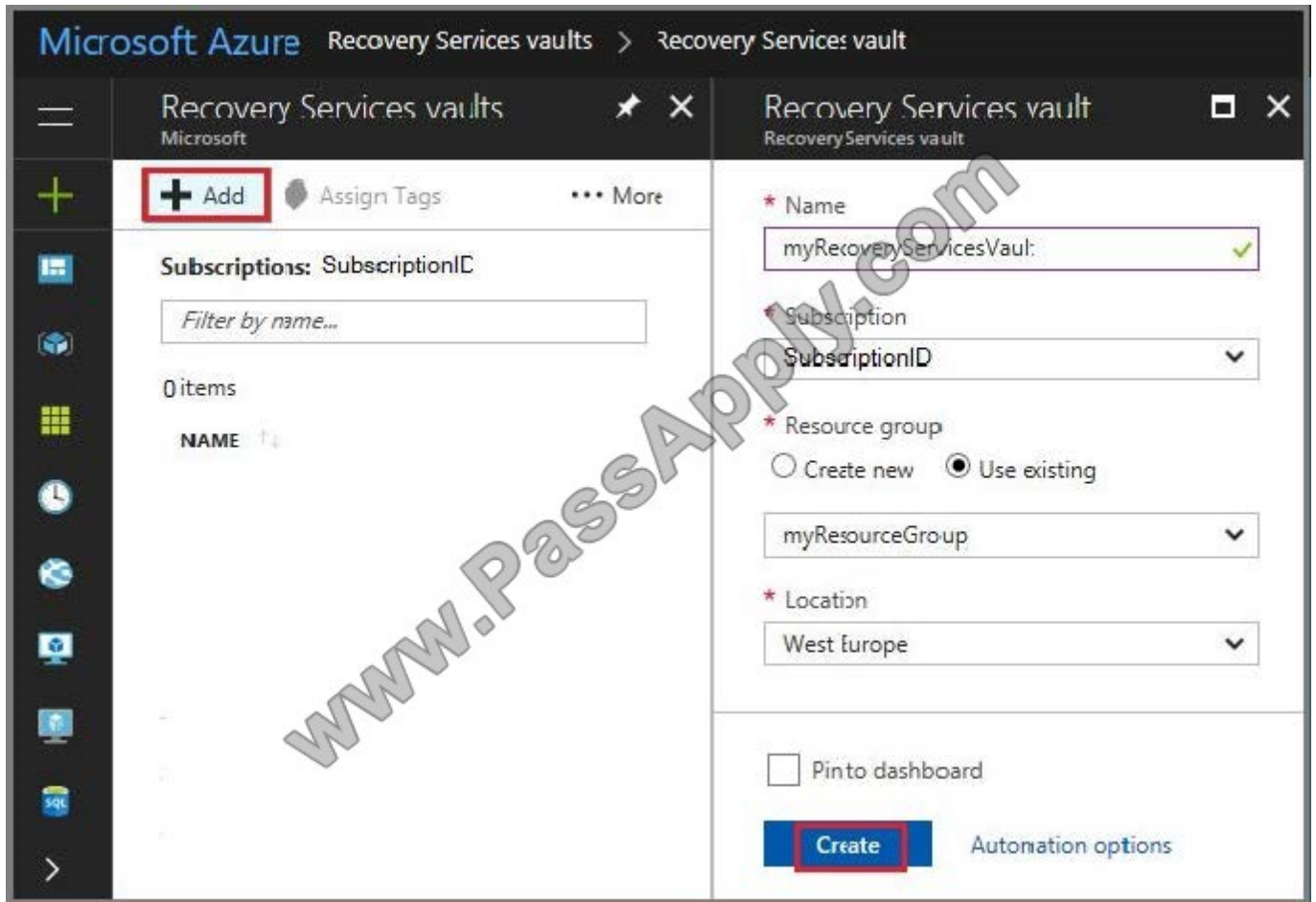
Correct Answer:

First, create Recovery Services vault.

Step 1: On the left-hand menu, select All services and in the services list, type Recovery Services. As you type, the list of resources filters. When you see Recovery Services vaults in the list, select it to open the Recovery Services vaults menu.



Step 2: In the Recovery Services vaults menu, click Add to open the Recovery Services vault menu.



Step 3: In the Recovery Services vault menu, for example,

Type myRecoveryServicesVault in Name.

The current subscription ID appears in Subscription. If you have additional subscriptions, you could choose another subscription for the new vault.

For Resource group select Use existing and choose myResourceGroup. If myResourceGroup doesn't exist, select Create new and type myResourceGroup.

From the Location drop-down menu, choose West Europe.

Click Create to create your Recovery Services vault.

References: <https://docs.microsoft.com/en-us/azure/backup/tutorial-backup-vm-at-scale>

QUESTION 5

You have an Azure subscription named Subscription1 that contains the resource group shown in the following table.



Name	Region
RG1	East Asia
RG2	East US

In RG1, you create a virtual machine named VM1 in the East Asia location. You plan to create VNET1, and then connect VM1 to VNET1.

What are two possible ways to achieve this goal? Each correct answer presents a complete a solution.

NOTE: Each correct selection is worth one point.

- A. Create VNET1 in RG1, and then set East Asia as the location
- B. Create VNET1 in RG2, and then set East Asia as the location
- C. Create VNET in RG2, and then set East US as the location
- D. Create VNET1 in a new resource group in the West US location, and then set West US as the location
- E. Create VNET1 in RG1, and then set East US as the location

Correct Answer: AB

[AZ-100 Study Guide](#)

[AZ-100 Exam Questions](#)

[AZ-100 Braindumps](#)



To Read the [Whole Q&As](#), please purchase the [Complete Version](#) from [Our website](#).

Try our product !

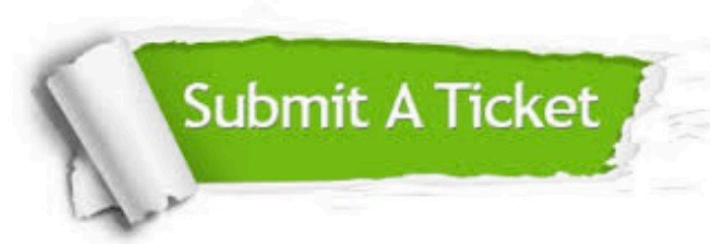
100% Guaranteed Success
100% Money Back Guarantee
365 Days Free Update
Instant Download After Purchase
24x7 Customer Support
Average 99.9% Success Rate
More than 800,000 Satisfied Customers Worldwide
Multi-Platform capabilities - [Windows](#), [Mac](#), [Android](#), [iPhone](#), [iPod](#), [iPad](#), [Kindle](#)

We provide exam PDF and VCE of Cisco, Microsoft, IBM, CompTIA, Oracle and other IT Certifications. You can view Vendor list of All Certification Exams offered:

<https://www.passapply.com/allproducts>

Need Help

Please provide as much detail as possible so we can best assist you.
To update a previously submitted ticket:



 <p>One Year Free Update Free update is available within One Year after your purchase. After One Year, you will get 50% discounts for updating. And we are proud to boast a 24/7 efficient Customer Support system via Email.</p>	 <p>Money Back Guarantee To ensure that you are spending on quality products, we provide 100% money back guarantee for 30 days from the date of purchase.</p>	 <p>Security & Privacy We respect customer privacy. We use McAfee's security service to provide you with utmost security for your personal information & peace of mind.</p>
---	---	--

Any charges made through this site will appear as Global Simulators Limited.
All trademarks are the property of their respective owners.
Copyright © passapply, All Rights Reserved.