



AD0-E117^{Q&As}

Adobe Experience Manager Architect Master

Pass Adobe AD0-E117 Exam with 100% Guarantee

Free Download Real Questions & Answers **PDF** and **VCE** file from:

<https://www.passapply.com/ad0-e117.html>

100% Passing Guarantee
100% Money Back Assurance

Following Questions and Answers are all new published by Adobe
Official Exam Center

- ⚙️ **Instant Download** After Purchase
- ⚙️ **100% Money Back** Guarantee
- ⚙️ **365 Days** Free Update
- ⚙️ **800,000+** Satisfied Customers





QUESTION 1

A media company wants to use AEM as content hub for multiple customer touch points:

1.

Brand-specific marketing websites hosted on AEM Sites ?Single Page Applications using headless content

2.

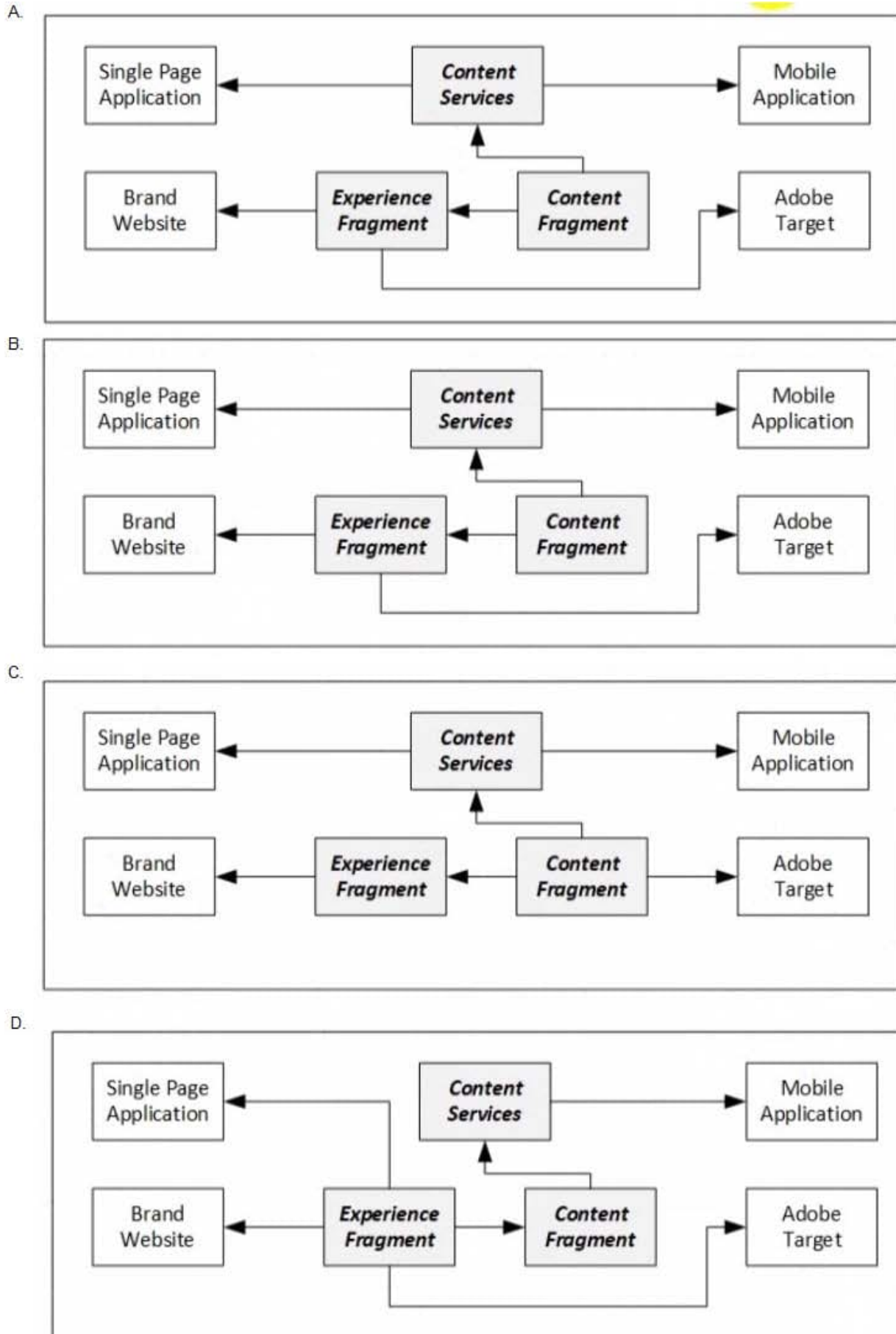
Native mobile applications

3.

Content offers in Adobe Target

The company wants to manage its content efficiently with its small editor staff. Text should be entered and reviewed only once, then reused for all touch points.

How should an Architect incorporate these requirements into a solution that leverages AEM Sites features?





A. OptionA

B. OptionB

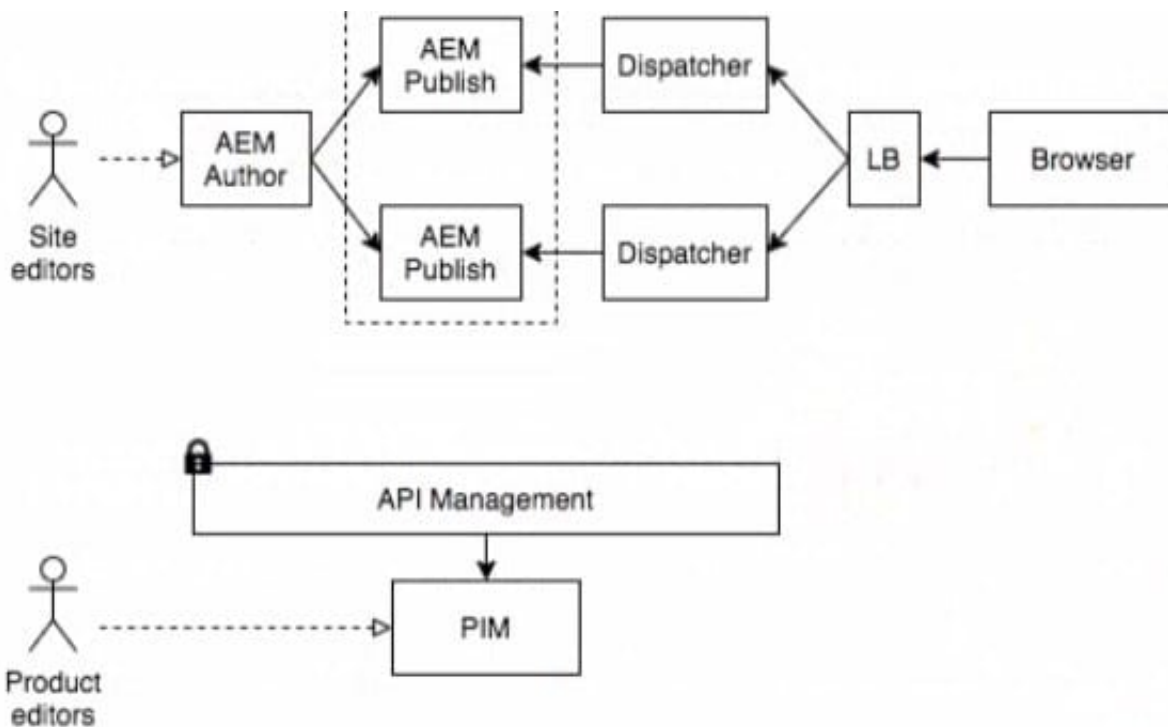
C. OptionC

D. OptionD

Correct Answer: D

QUESTION 2

Refer to the exhibit.



A customer with an existing AEM implementation wants to enrich product pages with technical data coming from their PIM system. The PIM system sits behind an API Management solution that publicly exposes the PIM APIs as RESTful web services with basic authentication as the security mechanism. Data consistency with the PIM and secure access to the APIs are key elements of the integration.

How should the Architect set up the integration between AEM and the PIM?

A. Integrate the AEM Publishers directly with the API Management solution

B. Use a client-side integration with AJAX from the browser to the API Management

C. Import the technical data into the AEM Author and replicate to Publishers

D. Convert the technical data to Content Fragments and expose using Content Services



Correct Answer: A

QUESTION 3

A company is implementing a new e-commerce site that is expected to get seasonal and flash-sale induced traffic peaks from all over the world. It is projected that a minute of downtime could cause excessive lost revenue. The company

management wants to keep resource utilization to optimal levels without experiencing degradation to avoid introducing bugs in the system.

The Architect needs to choose between AEM 6.5 and AEM as Cloud Service.

What are the two most critical non-functional requirements the Architect must consider? (Choose two.)

- A. Scalability
- B. Availability
- C. Reliability
- D. Maintainability
- E. Usability

Correct Answer: AE

QUESTION 4

A client is migrating the content from a legacy website to an existing AEM implementation. An Architect evaluates the content of the legacy site and determine-that there are approximately 20.000 pages with a common structure, and a few hundred pages that do not follow a pattern. The client wants to complete the migration as soon as possible.

Which approach should the Architect recommend for the content migration?

- A. Migrate all common pages using the ETL procedure with multiple rounds
- B. Migrate all common pages using the ETL procedure and use manual authoring for the rest
- C. Use Site importer to import the content into AEM
- D. Recreate the entire content manually with a group of Content Authors

Correct Answer: D

QUESTION 5

A client is modernizing some of their AEM sites to go from static to editable templates so they can use the latest features around has the following parameters:

- 1.



The client currently has a dozen static templates that they want to move to editable templates.

2.

The existing pages use the parsys paragraph system for storing components.

3.

Each page based on one of the static templates has its own custom properties tab that is unique for that template type.

4.

The client wants template authors to be able to create the editable templates.

Which approach should an Architect use to meet these requirements?

A. 1. Use a new page component for editable templates based on the core components page component

2. Migrate page properties to respective components dialogues

B. 1. Use a new page component for editable templates based on the core components page component

2. Convert page properties to policies

C. 1. Use the same page components for editable templates

2. Use a new template type for each static template

D. 1. Use the same page components for editable templates

2. Create a new editable template based on each of the existing page components

Correct Answer: D

[AD0-E117 PDF Dumps](#)

[AD0-E117 VCE Dumps](#)

[AD0-E117 Exam Questions](#)