



# AD0-E104<sup>Q&As</sup>

Adobe Experience Manager Architect

## Pass Adobe AD0-E104 Exam with 100% Guarantee

Free Download Real Questions & Answers **PDF** and **VCE** file from:

<https://www.passapply.com/ad0-e104.html>

100% Passing Guarantee  
100% Money Back Assurance

Following Questions and Answers are all new published by Adobe  
Official Exam Center

- ⚙️ **Instant Download** After Purchase
- ⚙️ **100% Money Back** Guarantee
- ⚙️ **365 Days** Free Update
- ⚙️ **800,000+** Satisfied Customers





### QUESTION 1

A customer wants to allow logged in/authenticated users to mark pages delivered from AEM as their favorite. The favorites are stored and retrieved using REST API from AEM.

The POST REST API call to store favorites always fails with a 403-forbidden error.

Which two configurations should the Architect review? (Choose two.)

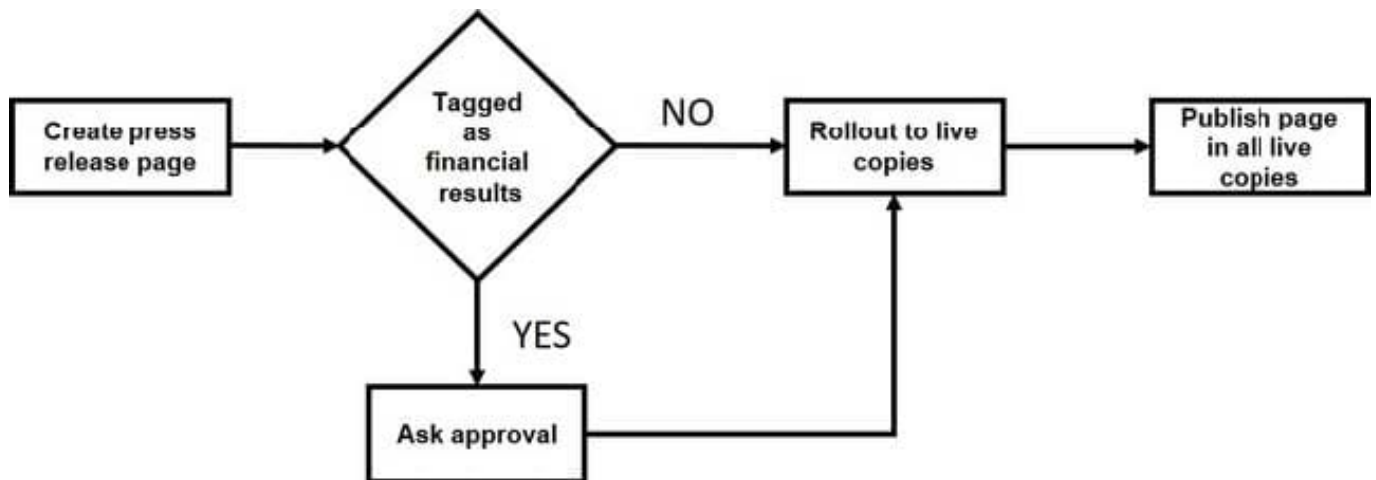
- A. Session timeout configuration
- B. CSRF token configuration
- C. Apache Sling Referrer Filter configuration
- D. Authentication handler configurations
- E. User Sync handler configuration

Correct Answer: BC

Reference: <https://forums.adobe.com/thread/2324551>

### QUESTION 2

A customer to simplify and automate publishing press release pages and defines the following flow:



What should the Architect recommend?

- A. Configure MSM with the "Activate on Blueprint activation" option
- B. Create a custom workflow launches
- C. Advise the customer to use Launches
- D. Implement a Sling event listener that triggers on page creation



Correct Answer: B

---

### QUESTION 3

An author makes changes to a page and performs replication to a publish site. Adobe Launch is used to add Analytics tags to the page. The old version of the page still appears on the dispatcher.

The Architect cleared the local browser and dispatcher cache. Also, replication queue has been verified and there are no pending replication jobs.

Which two steps should be performed to resolve this issue? (Choose two.)

- A. Check that the stat files are not missing on the dispatcher
- B. Check that permissions are appropriate for the resources
- C. Check that dependent components and templates are available on Publish
- D. Check that the replication agents are configured
- E. Check that the launch libraries have been published

Correct Answer: BE

---

### QUESTION 4

Which two security aspects should be configured in a dispatcher.any? (Choose two.)

- A. SQL Injection
- B. Cross Site Request Forgery (CSRF)
- C. Clickjacking
- D. Cross Site Scripting (XSS)
- E. Denial of Service (DoS)

Correct Answer: BE

---

### QUESTION 5

An author makes changes to a page. The old version still appears on the site. The Author needs to troubleshoot by bypassing the Dispatcher and accessing the AEM page directly through the Publish instance.

What should the author do?



- A. Modify the AEM Job Processing OSGI configuration
- B. Adjust the allowedClients of the dispatcher
- C. Use CURL to do a manual dispatcher flush
- D. Add a query parameter to the page URL

Correct Answer: D

[AD0-E104 VCE Dumps](#)

[AD0-E104 Practice Test](#)

[AD0-E104 Study Guide](#)