



# ACCP-V6.2<sup>Q&As</sup>

Aruba Certified Clearpass Professional v6.2

**Pass Aruba ACCP-V6.2 Exam with 100% Guarantee**

Free Download Real Questions & Answers **PDF** and **VCE** file from:

<https://www.passapply.com/accp-v6-2.html>

100% Passing Guarantee  
100% Money Back Assurance

Following Questions and Answers are all new published by Aruba  
Official Exam Center

-  **Instant Download** After Purchase
-  **100% Money Back** Guarantee
-  **365 Days** Free Update
-  **800,000+** Satisfied Customers





### QUESTION 1

A hotel chain recently deployed ClearPass Guest. A guest enters the hotel and connects to the Guest SSID. They launch their web browser and type in `www.google.com`, but they're unable to immediately see the web login page.

Which of the following could be causing this? (Choose 2):

- A. The DNS server is not replying with an IP address for `www.google.com`.
- B. The guest is using a Linux laptop which doesn't support web login.
- C. The ClearPass server has a server certificate issued by Verisign.
- D. The ClearPass server has a server certificate issued by the internal Microsoft Certificate Server.
- E. The ClearPass server does not recognize the client's certificate.

Correct Answer: AD

---

### QUESTION 2

UDP Port 3799 is used for RADIUS CoA (RFC 3576). This port has been blocked by a firewall between a NAD device and ClearPass. Which of the following is true?

- A. RADIUS Authentications will fail since the NAD won't be able to reach the ClearPass server.
- B. RADIUS Authentications will not happen since the NAD won't be able to reach the ClearPass server.
- C. RADIUS Authentication will succeed, but Post-Authentication Disconnect-Requests from ClearPass to the Controller will not be delivered.
- D. RADIUS Authentication will succeed, but RADIUS Access-Accept messages from ClearPass to the Controller for Change of Role will not be delivered.
- E. During RADIUS authentication, certificate exchange between the NAD and Clearpass will fail.

Correct Answer: C

---

### QUESTION 3

Which of the following statements is true about Enforcement Profiles in Clearpass?

- A. The Enforcement Profile attribute value needs to match the ClearPass role value for a user.
- B. Access-control attributes from an Enforcement Profile are returned to the Authentication Source.
- C. Access-control attributes from an Enforcement Profile are returned to the Network Access Device.
- D. Once created in the service wizard, the Enforcement Profile cannot be modified.
- E. Enforcement Profiles must use RADIUS dictionary attributes only.



Correct Answer: C

#### QUESTION 4

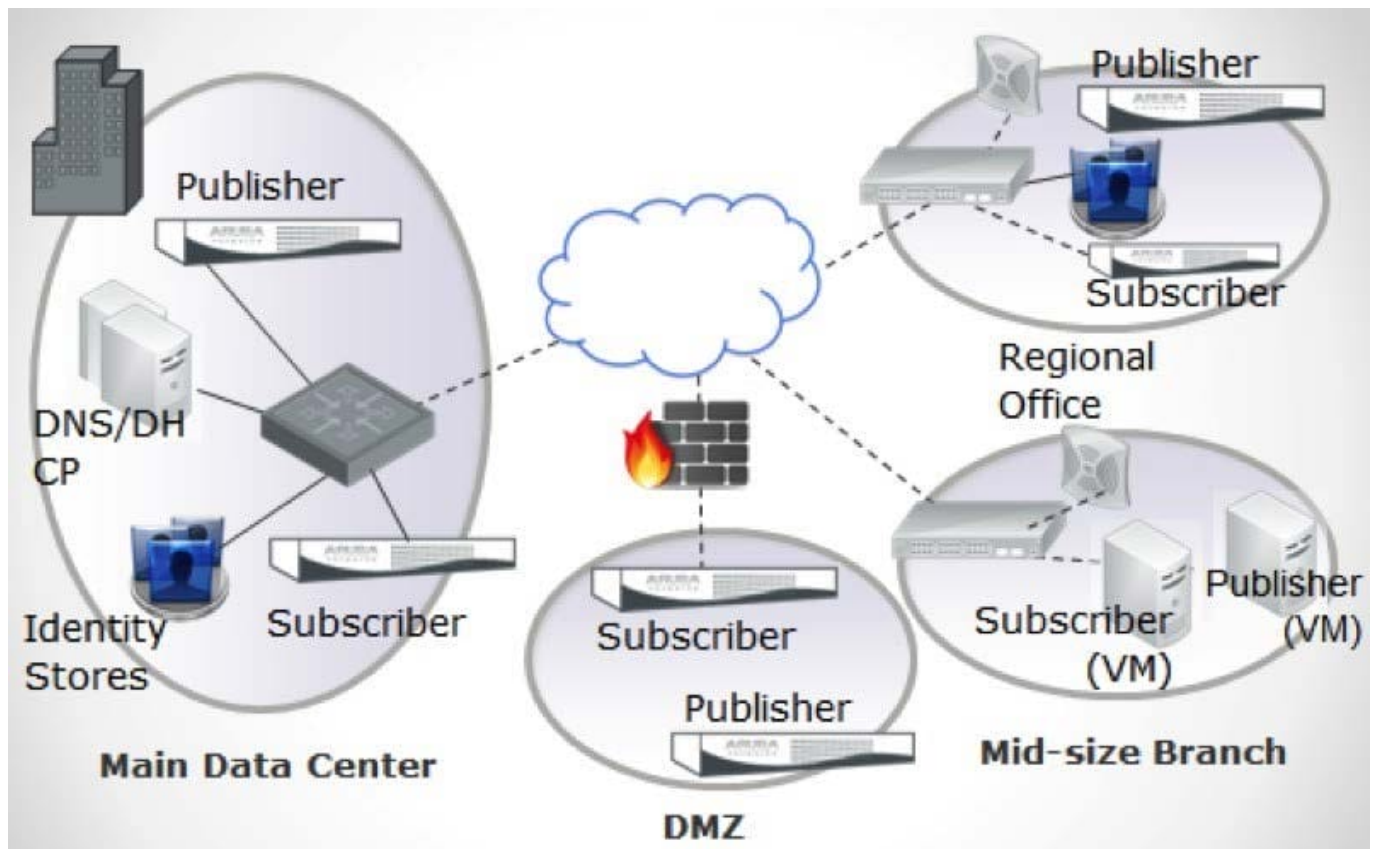
Which licenses are included in the built in Starter kit for Clearpass?

- A. 25 ClearPass Policy Manager licenses
- B. 25 Clearpass Enterprise licenses
- C. 10 ClearPass Guest licenses, 10 ClearPass OnGuard licenses and 10 ClearPass Onboard licenses
- D. 25 ClearPass Profiler licenses
- E. 10 Clearpass Enterprise licenses

Correct Answer: B

#### QUESTION 5

Below is a network topology diagram: How many clusters are needed for this deployment?



- A. 1
- B. 3



C. 4

D. 8

E. 2

Correct Answer: C

[ACCP-V6.2 Practice Test](#)

[ACCP-V6.2 Study Guide](#)

[ACCP-V6.2 Exam  
Questions](#)