



ACCP-V6.2^{Q&As}

Aruba Certified Clearpass Professional v6.2

Pass Aruba ACCP-V6.2 Exam with 100% Guarantee

Free Download Real Questions & Answers **PDF** and **VCE** file from:

<https://www.passapply.com/accp-v6-2.html>

100% Passing Guarantee
100% Money Back Assurance

Following Questions and Answers are all new published by Aruba
Official Exam Center

-  **Instant Download** After Purchase
-  **100% Money Back** Guarantee
-  **365 Days** Free Update
-  **800,000+** Satisfied Customers





QUESTION 1

Refer to the screenshot in the diagram below, as seen when a Web Login Page is configured in ClearPass Guest:

Home » Configuration » Web Logins

RADIUS Web Login

Use this form to make changes to the RADIUS Web Login **Guest Network**.

RADIUS Web Login Editor	
* Name:	<input type="text" value="Guest Network"/> Enter a name for this web login page.
Page Name:	<input type="text" value="Aruba_login"/> Enter a page name for this web login. The web login will be accessible from "/guest/page_name.php".
Description:	<input type="text"/> Comments or descriptive text about the web login.
* Vendor Settings:	<input type="text" value="Aruba Networks"/> Select a predefined group of settings suitable for standard network configurations.
Address:	<input type="text" value="securelogin.arubanetworks.com"/> Enter the IP address or hostname of the vendor's product here.
Secure Login:	<input type="text" value="Use vendor default"/> Select a security option to apply to the web login process.
Dynamic Address:	<input type="checkbox"/> The controller will send the IP to submit credentials In multi-controller deployments, it is often required to post credentials to different add The address above will be used whenever the parameter is not available or fails the r

What is the Address field value '\securelogin.arubanetworks.com\' used for?

- A. For appending to the Web Login URL, before the page name.
- B. For ClearPass to POST the user credentials to the NAD device.
- C. For ClearPass to send a RADIUS request to the NAD device.
- D. For ClearPass to send a TACACS+ request to the NAD device.
- E. For appending to the Web Login URL, after the page name.

Correct Answer: B

QUESTION 2



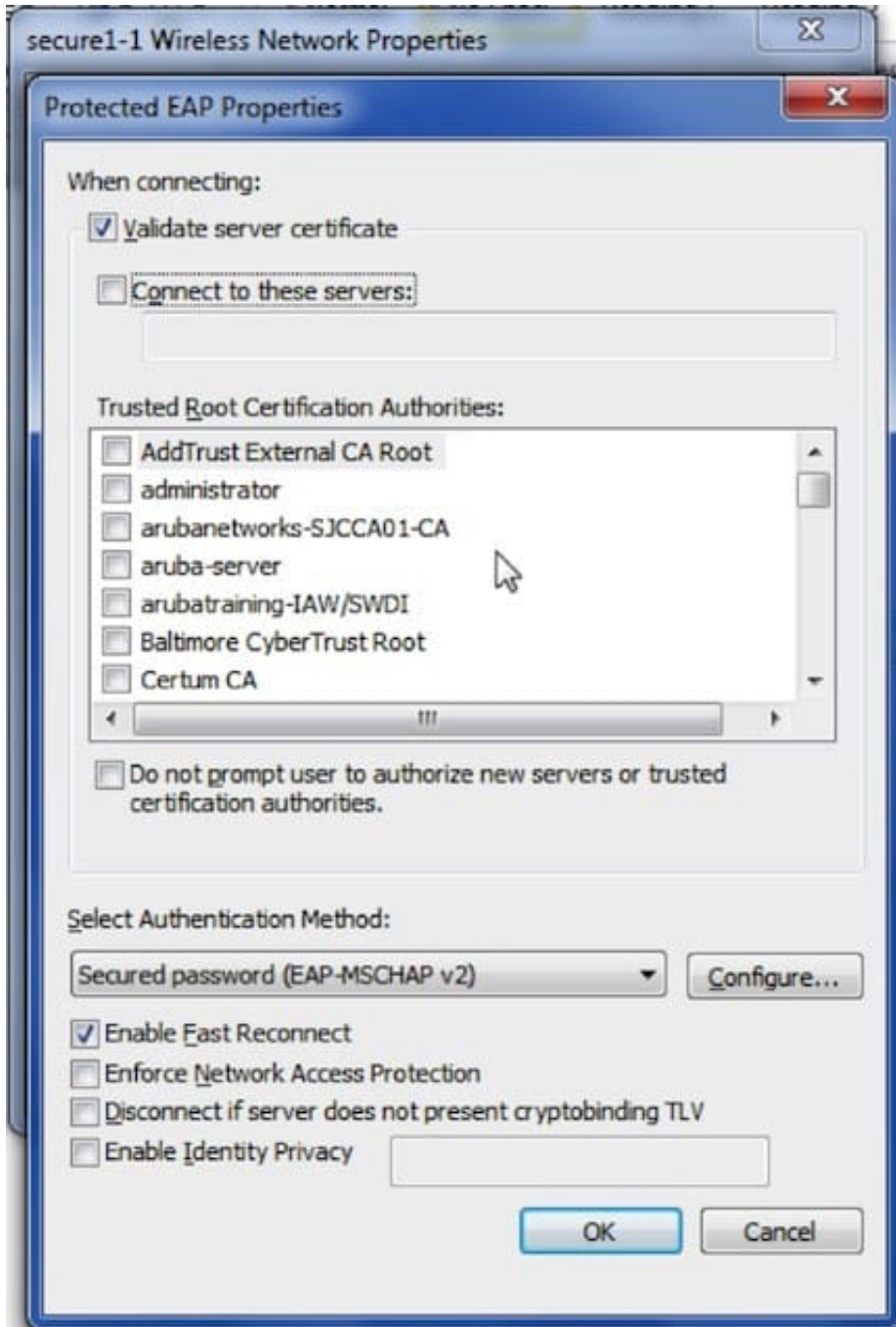
What is RADIUS CoA used for?

- A. To authenticate users or devices before granting them access to a network.
- B. To force the client to re-authenticate upon roaming to a new Controller.
- C. To apply firewall policies based on authentication credentials.
- D. To validate a host MAC against a white and a black list.
- E. To transmit messages to the NAD/NAS to modify a user's session status.

Correct Answer: E

QUESTION 3

Refer to the screenshot in the diagram below, which illustrates the configuration of a Windows 802.1X supplicant.



What will selecting "Validate server certificate" do?

- A. The client will send its certificate to the server for verification.
- B. The server will send its private key to the client for verification.
- C. The server and client will perform an HTTPS SSL certificate exchange.
- D. The client will verify the server certificate against a trusted CA.
- E. The client will send its private key to the server for verification.

Correct Answer: D



QUESTION 4

Which of the following is NOT a function of ClearPass Insight?

- A. Report Generation
- B. RADIUS Accounting Start-Stop messages
- C. Email Alerts
- D. SMS Alerts
- E. Searching for RADIUS failed authentications

Correct Answer: B

QUESTION 5

Which of the following devices support Apple over-the-air provisioning? (Choose 2)

- A. Laptop running Mac OS X 10.6
- B. Laptop running Mac OS X 10.8
- C. iOS 5
- D. Android 2.2
- E. Windows XP

Correct Answer: BC

[Latest ACCP-V6.2 Dumps](#)

[ACCP-V6.2 Exam
Questions](#)

[ACCP-V6.2 Braindumps](#)